

Anti-RNA Sensor RIG-I Recombinant Rabbit Monoclonal Antibody



Catalog #: 2512

Aliases

RNA Sensor RIG-I; RIG-I; Antiviral Innate Immune Response Receptor RIG-I; RIG-1; DDX58; RIG1; DEAD (Asp-Glu-Ala-Asp) Box Polypeptide 58; Retinoic Acid-Inducible Gene 1 Protein; Retinoic Acid-Inducible Gene I Protein; ATP-Dependent RNA Helicase DDX58; DExD/H-Box Helicase 58; DEAD Box Protein 58; RNA Helicase RIG-I; DKFZp434J1111; FLJ13599; RLR-1; DEAD/H (Asp-Glu-Ala-Asp/His) Box Polypeptide; Probable ATP-Dependent RNA Helicase DDX58; Retinoic Acid Inducible Gene I; RIG-I-Like Receptor 1; EC 3.6.4.13; SGMRT2

Background

Gene Name: RIGI

NCBI Gene Entry: [23586](#)

UniProt Entry: [O95786](#)

Application Information

Molecular Weight: Predicted, 107 kDa; observed, 107 kDa

Clonality: Rabbit monoclonal antibody

Clone ID: 24GB1195

Species Reactivity: Human

Applications Tested: Western blotting (WB), flow cytometry (FCM), immunocytochemistry (IC)

Immunogen

A synthesized peptide derived from human DDX58

Isotype

Rabbit IgG

Storage Buffer

Supplied in PBS (pH 7.4) containing 50% glycerol, and 0.02% sodium azide.

Storage

Store at -20 °C for one year.

Recommended Dilutions

Western Blotting (WB): 1:1,000-1:5,000

Flow Cytometry (FCM): 1:2,000

Immunocytochemistry (IC): 1:100-1:1,000

SUPPORT

SUPPORT@GENUINBIOTECH.COM
TEL: +1-540-855-7041

ORDERS

SALES@GENUINBIOTECH.COM
FAX: +1-540-855-7041

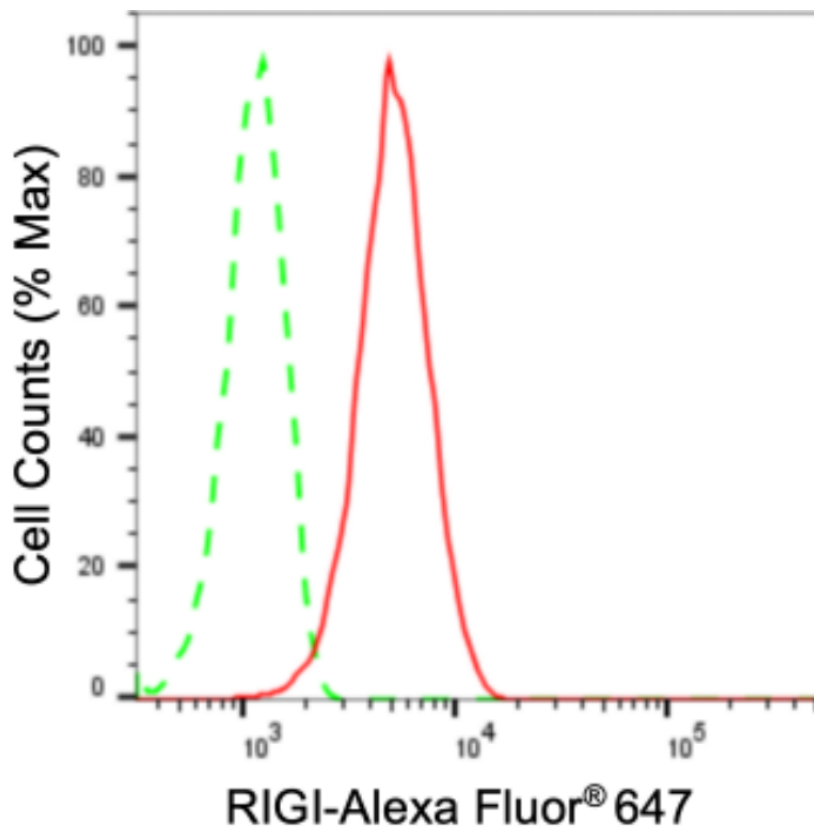
WWW.GENUINBIOTECH.COM

Anti-RNA Sensor RIG-I Recombinant Rabbit Monoclonal Antibody

PAGE 2

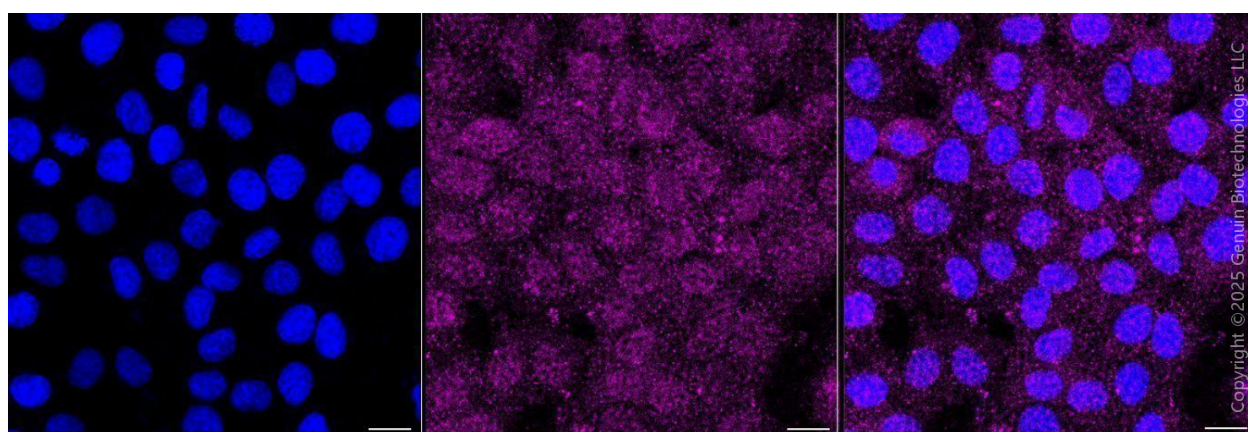
Note: This product is for research use only.

Validation Data



Copyright ©2024 Genuin Biotechnologies LLC

Flow cytometric analysis of RIG-I expression in HT-1080 cells using anti-RIG-I antibody (Cat#2512, 1:2,000). Green, isotype control; red, RIG-I.



Copyright ©2025 Genuin Biotechnologies LLC

Immunocytochemical staining of HT-1080 cells with anti-RIG-I antibody (Cat#2512, 1:1,000) . Nuclei were stained blue with DAPI; RIG-I was stained magenta with Alexa Fluor® 647. Images were taken using Leica stellaris 5. Protein abundance based on laser Intensity and smart gain: Low. Scale bar, 20 μm.

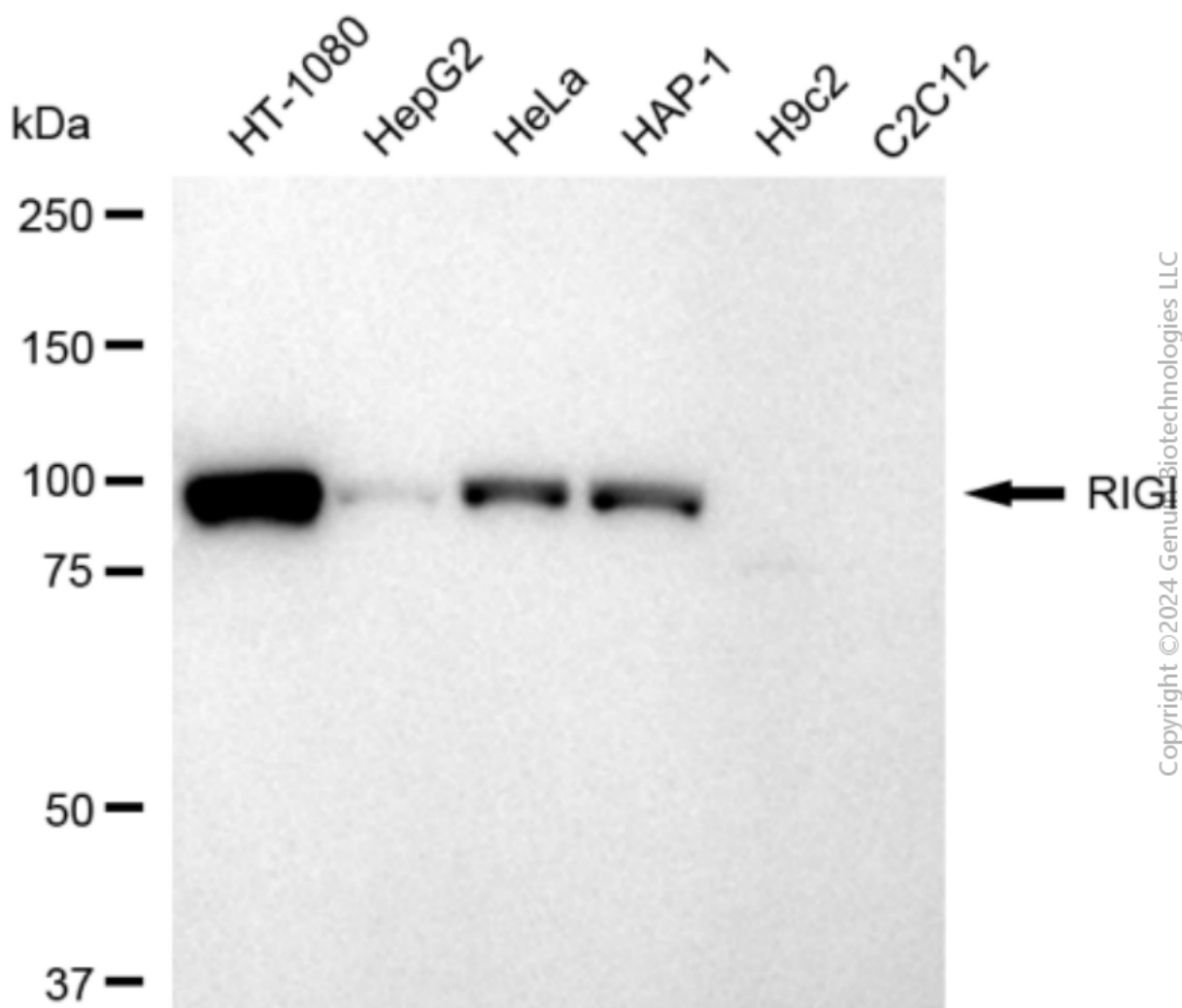
SUPPORT

SUPPORT@GENUINBIOTECH.COM
TEL: +1-540-855-7041

ORDERS

SALES@GENUINBIOTECH.COM
FAX: +1-540-855-7041

WWW.GENUINBIOTECH.COM



Western blotting analysis using anti-RIG-I antibody (Cat#2512). Total cell lysates (30 µg) from various cell lines were loaded and separated by SDS-PAGE. The blot was incubated with anti-RIG-I antibody (Cat#2512, 1:5,000) and HRP-conjugated goat anti-rabbit secondary antibody (Cat#201, 1:20,000) respectively. Image was developed using FeQ™ ECL Substrate Kit (Cat#226).