

Anti-PPARG Coactivator 1 Beta Recombinant Rabbit Monoclonal Antibody



Catalog #: 2515

Aliases

PPARG Coactivator 1 Beta; PGC1B; PERC; Peroxisome Proliferator-Activated Receptor Gamma, Coactivator 1 Beta; Peroxisome Proliferator-Activated Receptor Gamma Coactivator 1-Beta; PGC-1-Related Estrogen Receptor Alpha Coactivator; PPAR-Gamma Coactivator 1-Beta; PPARgamma Coactivator 1 Beta; PPARGC-1-Beta; Peroxisome Proliferative Activated Receptor, Gamma, Coactivator 1, Beta; PPARGC1beta; PGC-1(Beta); PGC-1-Beta; PPARGC1β; PPARGCIB; PPARGC1; ERRL1; PGC1

Background

Gene Name: PPARGC1B

NCBI Gene Entry: [133522](#)

UniProt Entry: [Q86YN6](#)

Application Information

Molecular Weight: Predicted, 113 kDa; observed, 113 kDa

Clonality: Rabbit monoclonal antibody

Clone ID: 24GB1205

Species Reactivity: Human, mouse, rat

Applications Tested: Western blotting (WB), flow cytometry (FCM), immunocytochemistry (IC)

Immunogen

A synthesized peptide derived from human PGC1 beta

Isotype

Rabbit IgG

Storage Buffer

Supplied in PBS (pH 7.4) containing 50% glycerol, and 0.02% sodium azide.

Storage

Store at -20 °C for one year.

Recommended Dilutions

Western Blotting (WB): 1:1,000-1:5,000

Flow Cytometry (FCM): 1:2,000

Immunocytochemistry (IC): 1:100-1:1,000

SUPPORT

SUPPORT@GENUINBIOTECH.COM
TEL: +1-540-855-7041

ORDERS

SALES@GENUINBIOTECH.COM
FAX: +1-540-855-7041

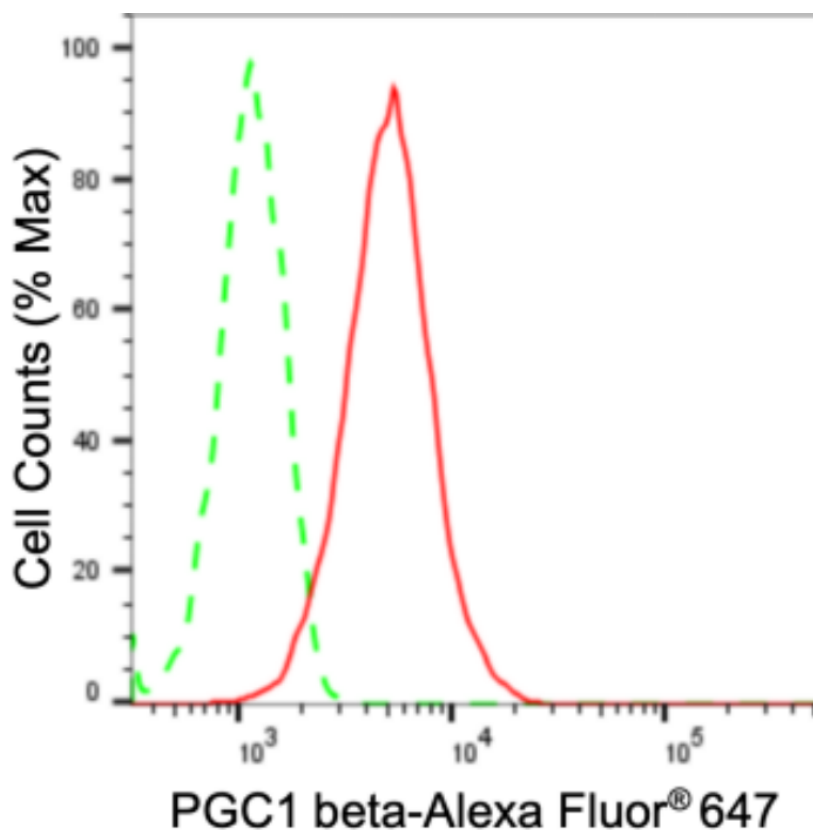
WWW.GENUINBIOTECH.COM

Anti-PPARG Coactivator 1 Beta Recombinant Rabbit Monoclonal Antibody

PAGE 2

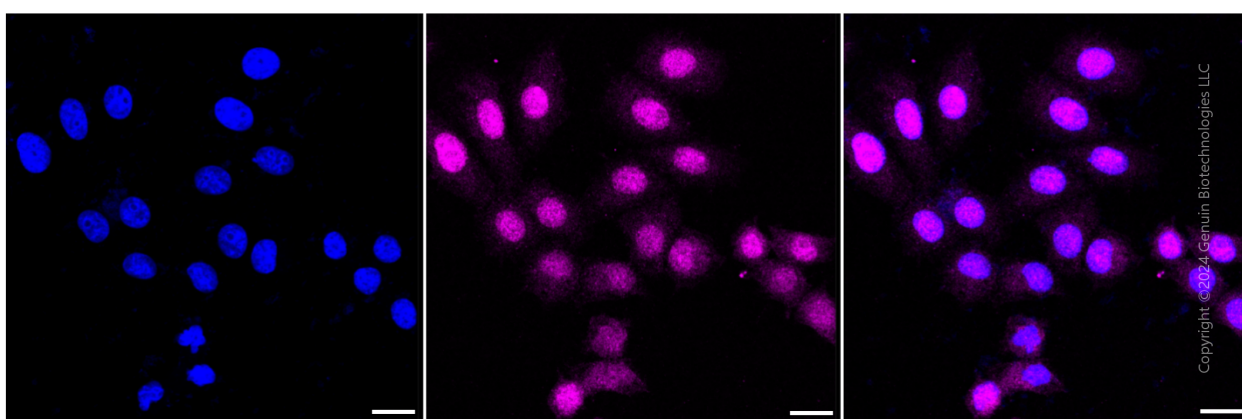
Note: This product is for research use only.

Validation Data



Copyright ©2024 Genuin Biotechnologies LLC

Flow cytometric analysis of PGC1 beta expression in HepG2 cells using anti-PGC1 beta antibody (Cat#2515, 1:2,000). Green, isotype control; red, PGC1 beta.



Copyright ©2024 Genuin Biotechnologies LLC

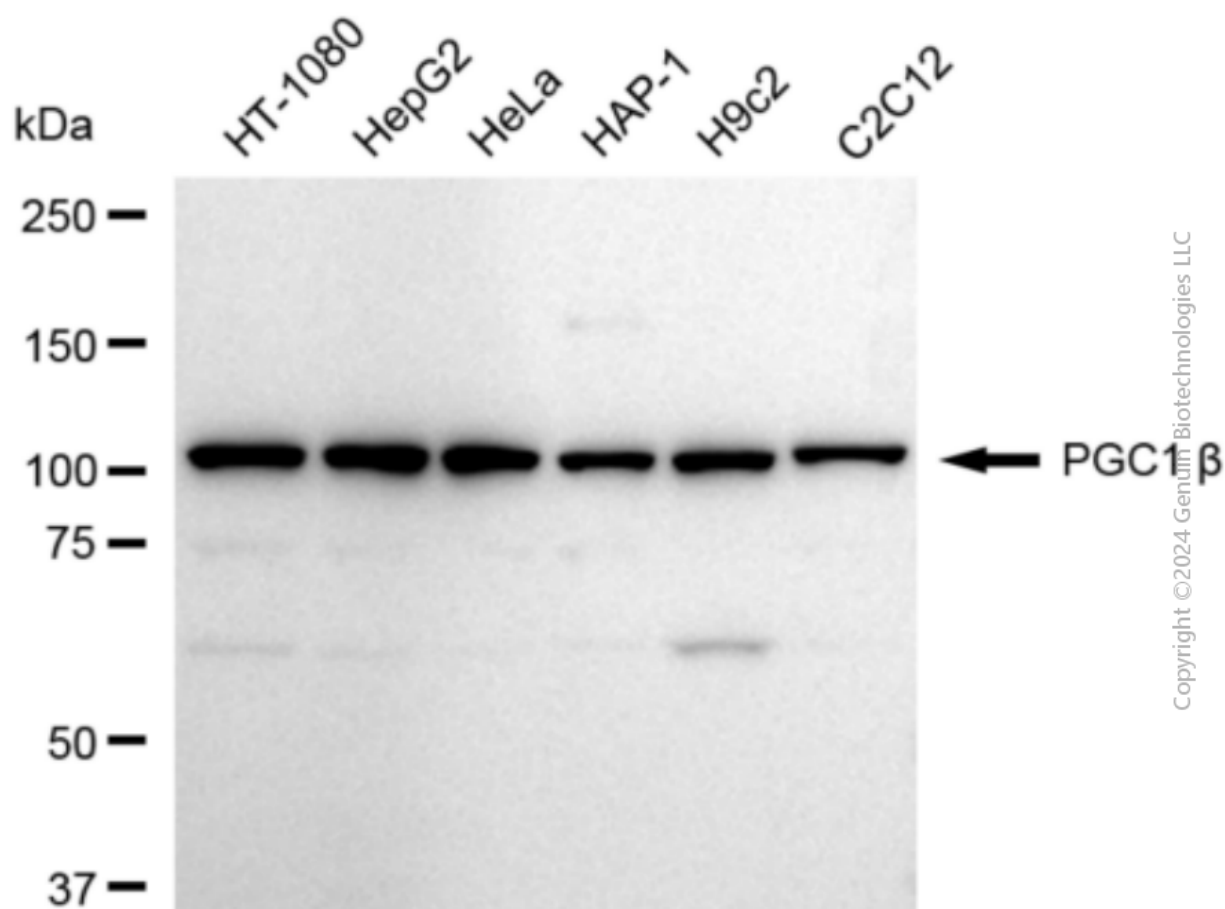
SUPPORT

SUPPORT@GENUINBIOTECH.COM
TEL: +1-540-855-7041

ORDERS

SALES@GENUINBIOTECH.COM
FAX: +1-540-855-7041

WWW.GENUINBIOTECH.COM



Western blotting analysis using anti-PGC1 beta antibody (Cat#2515). Total cell lysates (30 μ g) from various cell lines were loaded and separated by SDS-PAGE. The blot was incubated with anti-PGC1 beta antibody (Cat#2515, 1:5,000) and HRP-conjugated goat anti-rabbit secondary antibody (Cat#201, 1:20,000) respectively. Image was developed using FeQ™ ECL Substrate Kit (Cat#226).