

Anti-Reticulon 4 Recombinant Rabbit Monoclonal Antibody



Catalog #: 2516

Aliases

Reticulon 4; NOGO; KIAA0886; NSP-CL; ASY; Neuroendocrine-Specific Protein C Homolog; Neurite Outgrowth Inhibitor; Reticulon-4; Foocen; RTN-X; NSP; Neuroendocrine-Specific Protein; Neurite Growth Inhibitor 220; My043 Protein; Nogo Protein; Human NogoA; Reticulon 5; Reticulon-5; NI220/250; Nbla00271; Nbla10545; RTN4-B1; RTN4-B2; RTN4-A; RTN4-C

Background

Gene Name: RTN4

NCBI Gene Entry: [57142](#)

UniProt Entry: [Q9NQC3](#)

Application Information

Molecular Weight: Predicted, 130 kDa; observed, 40-55 kDa

Clonality: Rabbit monoclonal antibody

Clone ID: 24GB1210

Species Reactivity: Human, mouse, rat

Applications Tested: Western blotting (WB), flow cytometry (FCM), immunocytochemistry (IC)

Immunogen

A synthesized peptide derived from human Nogo

Isotype

Rabbit IgG

Storage Buffer

Supplied in PBS (pH 7.4) containing 50% glycerol, and 0.02% sodium azide.

Storage

Store at -20 °C for one year.

Recommended Dilutions

Western Blotting (WB): 1:1,000-1:5,000

Flow Cytometry (FCM): 1:2,000

Immunocytochemistry (IC): 1:100-1:1,000

SUPPORT

SUPPORT@GENUINBIOTECH.COM
TEL: +1-540-855-7041

ORDERS

SALES@GENUINBIOTECH.COM
FAX: +1-540-855-7041

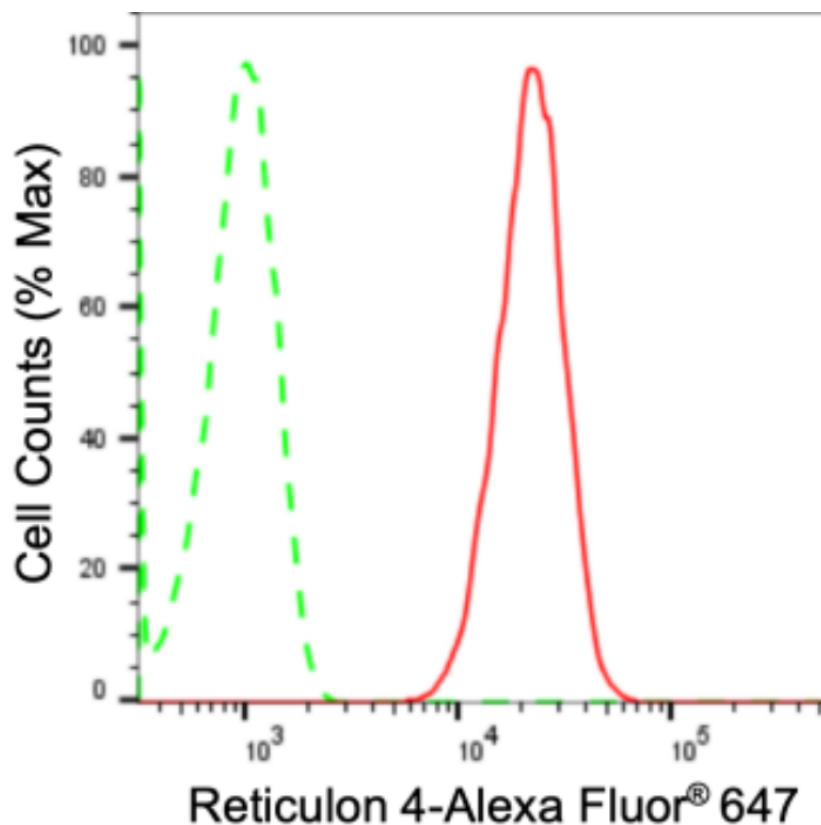
WWW.GENUINBIOTECH.COM

Anti-Reticulon 4 Recombinant Rabbit Monoclonal Antibody

PAGE 2

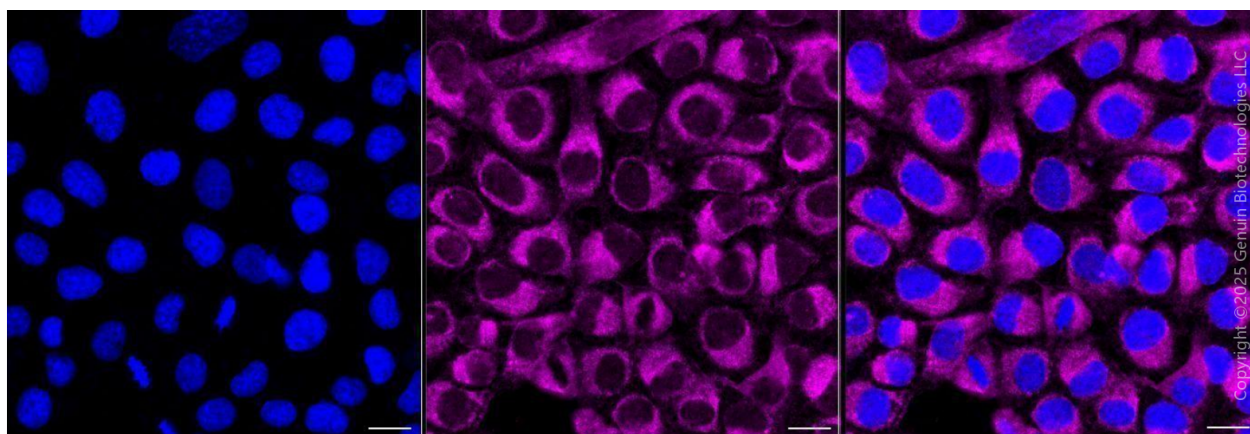
Note: This product is for research use only.

Validation Data



Copyright ©2024 Genuin Biotechnologies LLC

Flow cytometric analysis of Reticulon 4 expression in HT-1080 cells using anti-Reticulon 4 antibody (Cat#2516, 1:2,000). Green, isotype control; red, Reticulon 4.



Copyright ©2025 Genuin Biotechnologies LLC

Immunocytochemical staining of HT-1080 cells with anti-Reticulon 4 antibody (Cat#2516, 1:1,000) . Nuclei were stained blue with DAPI; Reticulon 4 was stained magenta with Alexa Fluor® 647. Images were taken using Leica stellaris 5. Protein abundance based on laser Intensity and smart gain: Medium. Scale bar, 20 µm.

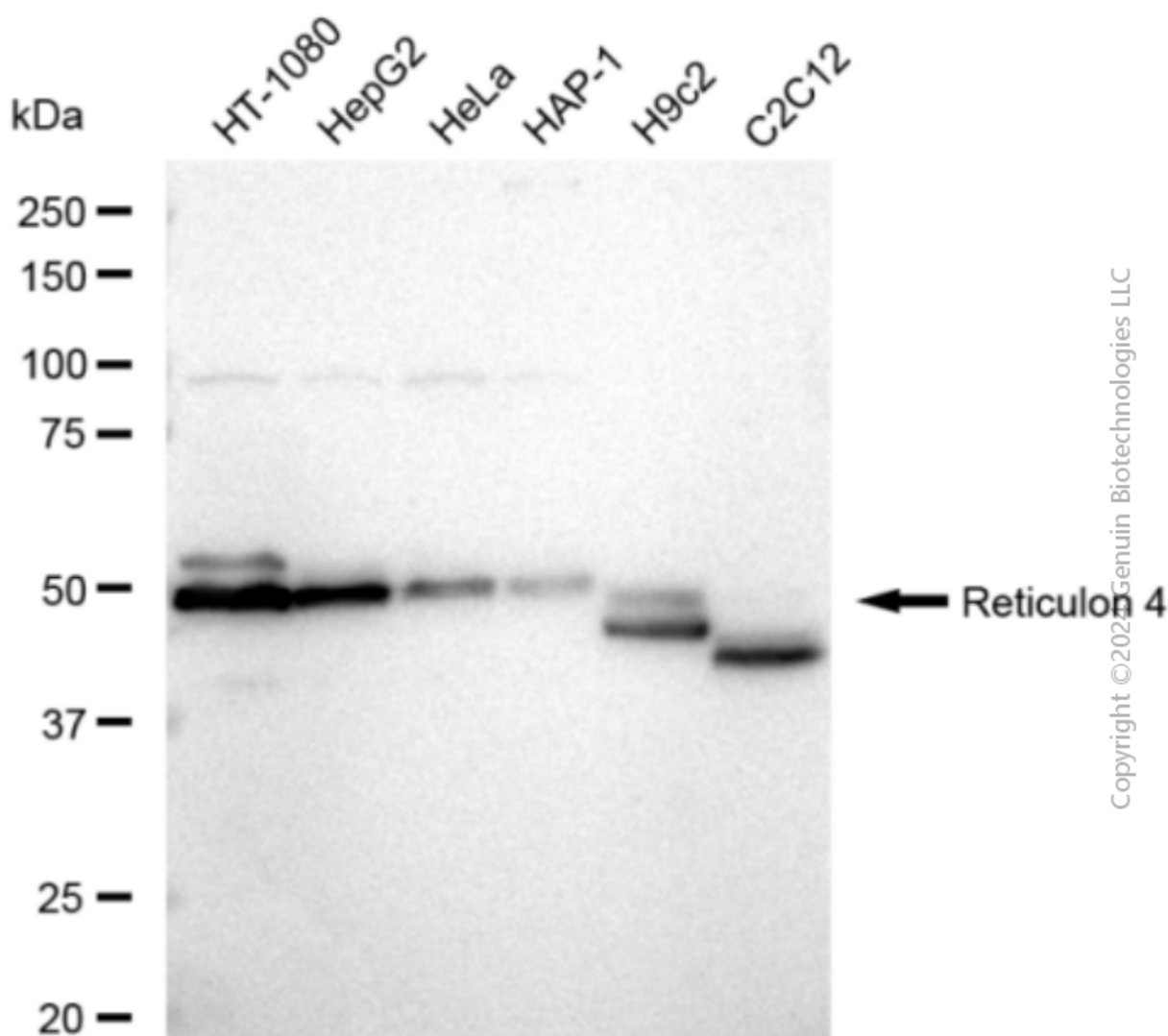
SUPPORT

SUPPORT@GENUINBIOTECH.COM
TEL: +1-540-855-7041

ORDERS

SALES@GENUINBIOTECH.COM
FAX: +1-540-855-7041

WWW.GENUINBIOTECH.COM



Western blotting analysis using anti-Reticulon 4 antibody (Cat#2516). Total cell lysates (30 µg) from various cell lines were loaded and separated by SDS-PAGE. The blot was incubated with anti-Reticulon 4 antibody (Cat#2516, 1:5,000) and HRP-conjugated goat anti-rabbit secondary antibody (Cat#201, 1:20,000) respectively. Image was developed using FeQ™ ECL Substrate Kit (Cat#226).