

Anti-Splicing Factor 3b Subunit 1 Recombinant Rabbit Monoclonal Antibody



Catalog #: 2519

Aliases

Splicing Factor 3b Subunit 1; SF3b155; SAP155; PRPF10; Hsh155; Prp10; Splicing Factor 3b, Subunit 1, 155kDa; Spliceosome-Associated Protein 155; Pre-mRNA Splicing Factor SF3b, 155 KDa Subunit; Pre-mRNA-Splicing Factor SF3b 155 KDa Subunit; Splicing Factor 3b, Subunit 1, 155kD; Splicing Factor 3B Subunit 1; Pre-mRNA Processing 10; SAP 155; MDS

Background

Gene Name: SF3B1

NCBI Gene Entry: [23451](#)

UniProt Entry: [O75533](#)

Application Information

Molecular Weight: Predicted, 146 kDa; observed, 155 kDa

Clonality: Rabbit monoclonal antibody

Clone ID: 24GB1225

Species Reactivity: Human, mouse, rat

Applications Tested: Western blotting (WB), flow cytometry (FCM), immunocytochemistry (IC)

Immunogen

A synthesized peptide derived from human SF3B1

Isotype

Rabbit IgG

Storage Buffer

Supplied in PBS (pH 7.4) containing 50% glycerol, and 0.02% sodium azide.

Storage

Store at -20 °C for one year.

Recommended Dilutions

Western Blotting (WB): 1:1,000-1:5,000

Flow Cytometry (FCM): 1:2,000

Immunocytochemistry (IC): 1:100-1:1,000

SUPPORT

SUPPORT@GENUINBIOTECH.COM
TEL: +1-540-855-7041

ORDERS

SALES@GENUINBIOTECH.COM
FAX: +1-540-855-7041

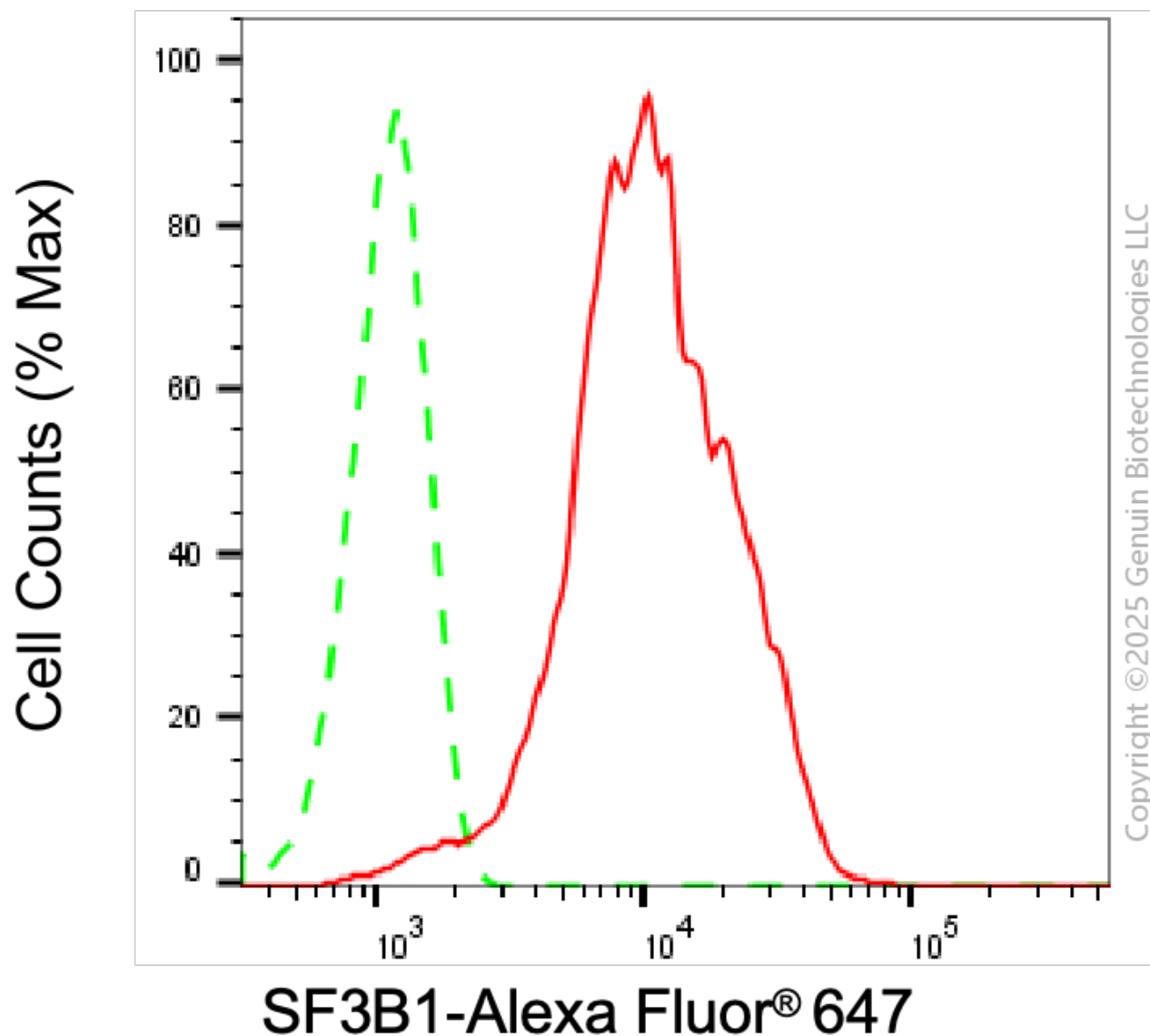
WWW.GENUINBIOTECH.COM

Anti-Splicing Factor 3b Subunit 1 Recombinant Rabbit Monoclonal Antibody

PAGE 2

Note: This product is for research use only.

Validation Data



Flow cytometric analysis of SF3B1 expression in HepG2 cells using anti-SF3B1 antibody (Cat#2519, 1:2,000). Green, isotype control; red, SF3B1.

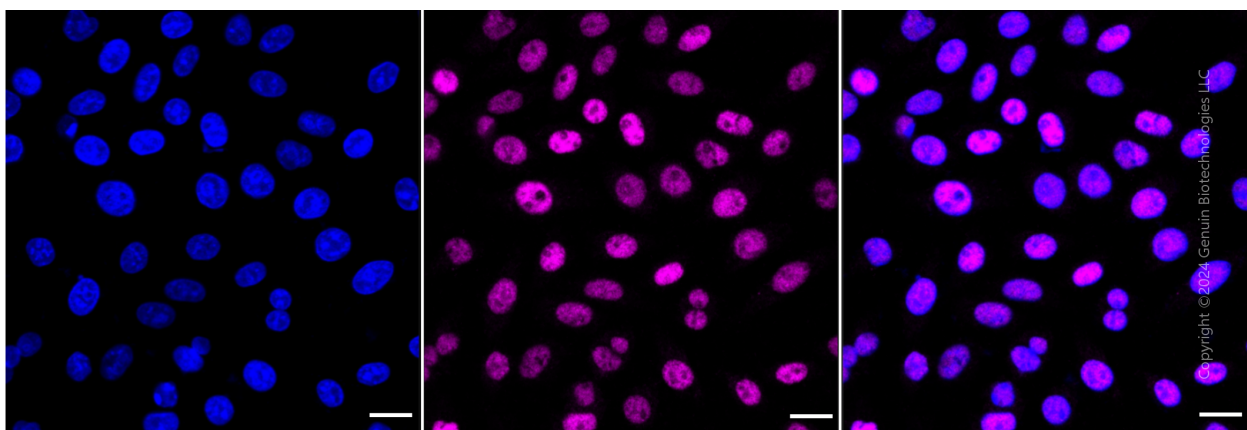
SUPPORT

SUPPORT@GENUINBIOTECH.COM
TEL: +1-540-855-7041

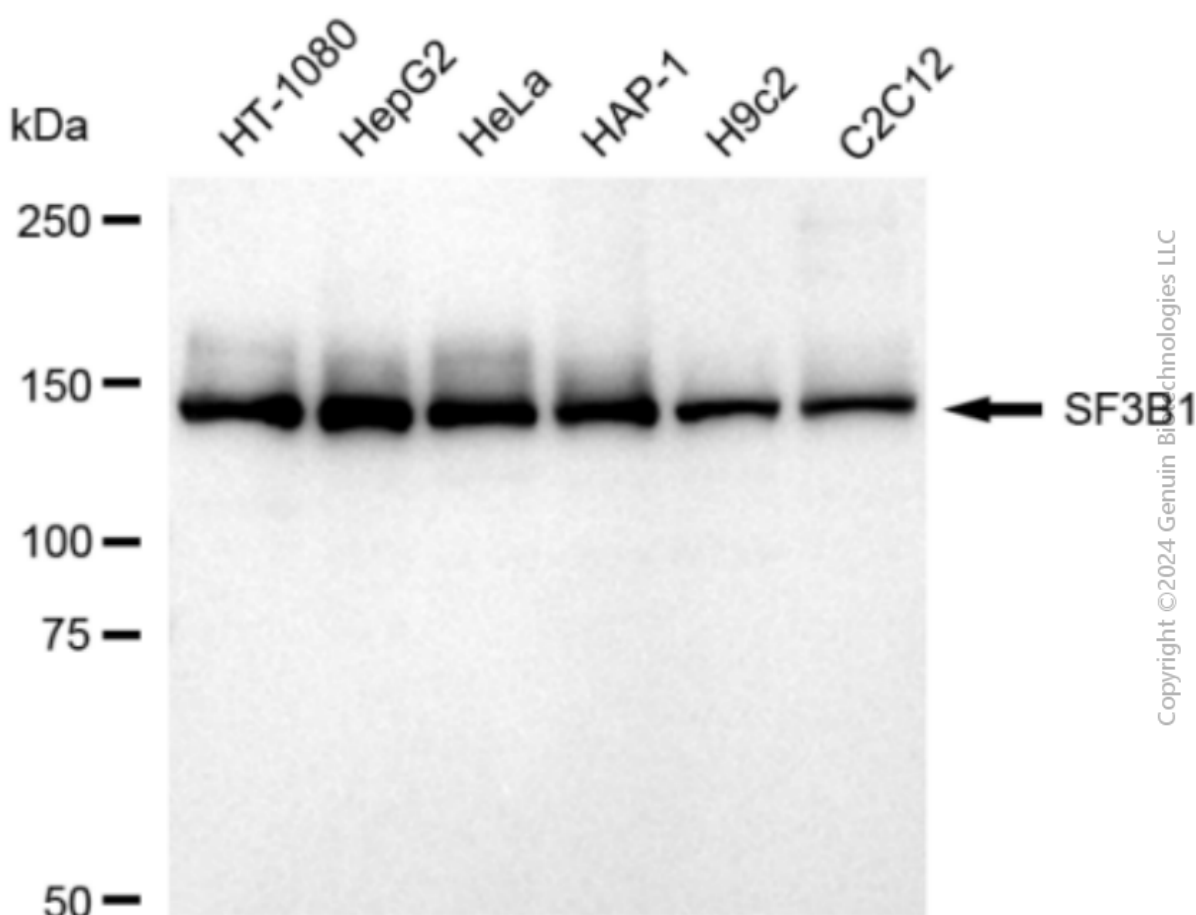
ORDERS

SALES@GENUINBIOTECH.COM
FAX: +1-540-855-7041

WWW.GENUINBIOTECH.COM



Immunocytochemical staining of HepG2 cells with anti-SF3B1 antibody (Cat#2519, 1:1,000). Nuclei were stained blue with DAPI; SF3B1 was stained magenta with Alexa Fluor® 647. Images were taken using Leica stellaris 5. Protein abundance based on laser Intensity and smart gain: Medium. Scale bar: 20 µm.



Western blotting analysis using anti-SF3B1 antibody (Cat#2519). Total cell lysates (30 µg) from various cell lines were loaded and separated by SDS-PAGE. The blot was incubated with anti-

Anti-Splicing Factor 3b Subunit 1 Recombinant Rabbit Monoclonal Antibody

PAGE 4

SF3B1 antibody (Cat#2519, 1:5,000) and HRP-conjugated goat anti-rabbit secondary antibody (Cat#201, 1:20,000) respectively. Image was developed using FeQ™ ECL Substrate Kit (Cat#226).

SUPPORT

SUPPORT@GENUINBIOTECH.COM
TEL: +1-540-855-7041

ORDERS

SALES@GENUINBIOTECH.COM
FAX: +1-540-855-7041

WWW.GENUINBIOTECH.COM