

Anti-SEC61A1/2 Recombinant Rabbit Monoclonal Antibody



Catalog #: 2520

Aliases

SEC61A2; SEC61 Translocon Subunit Alpha 2; Protein Transport Protein Sec61 Subunit Alpha Isoform 2; Sec61 Alpha-2; FLJ10578; Protein Transport Protein Sec61 Subunit Alpha; Sec61 Alpha 2 Subunit (S. Cerevisiae); SEC61 Translocon Alpha 2 Subunit; Sec61 Alpha 2 Subunit; Sec61 Alpha Form 2

Background

Gene Name: SEC61A1/2

NCBI Gene Entry: [29927/55176](#)

UniProt Entry: [P61619/Q9H9S3](#)

Application Information

Molecular Weight: Predicted, 52 kDa; observed, 48 kDa

Clonality: Rabbit monoclonal antibody

Clone ID: 24GB1230

Species Reactivity: Human, mouse, rat

Applications Tested: Western blotting (WB), flow cytometry (FCM), immunocytochemistry (IC)

Immunogen

A synthesized peptide derived from human SEC61A1/2

Isotype

Rabbit IgG

Storage Buffer

Supplied in PBS (pH 7.4) containing 50% glycerol, and 0.02% sodium azide.

Storage

Store at -20 °C for one year.

Recommended Dilutions

Western Blotting (WB): 1:1,000-1:5,000

Flow Cytometry (FCM): 1:2,000

Immunocytochemistry (IC): 1:100-1:1,000

SUPPORT

SUPPORT@GENUINBIOTECH.COM
TEL: +1-540-855-7041

ORDERS

SALES@GENUINBIOTECH.COM
FAX: +1-540-855-7041

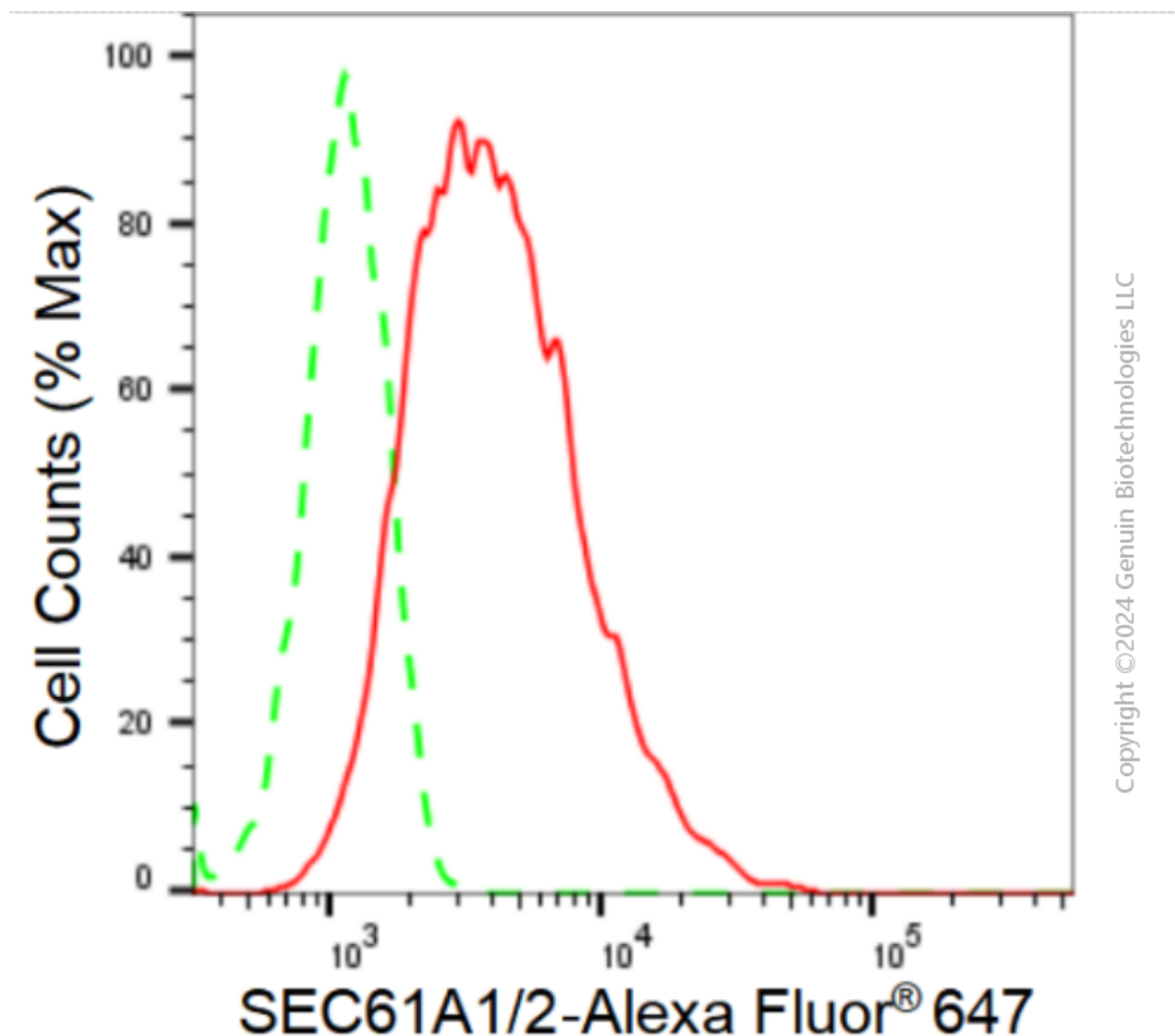
WWW.GENUINBIOTECH.COM

Anti-SEC61A1/2 Recombinant Rabbit Monoclonal Antibody

PAGE 2

Note: This product is for research use only.

Validation Data



Flow cytometric analysis of SEC61A1/2 expression in HepG2 cells using anti-SEC61A1/2 antibody (Cat#2520, 1:2,000). Green, isotype control; red, SEC61A2.

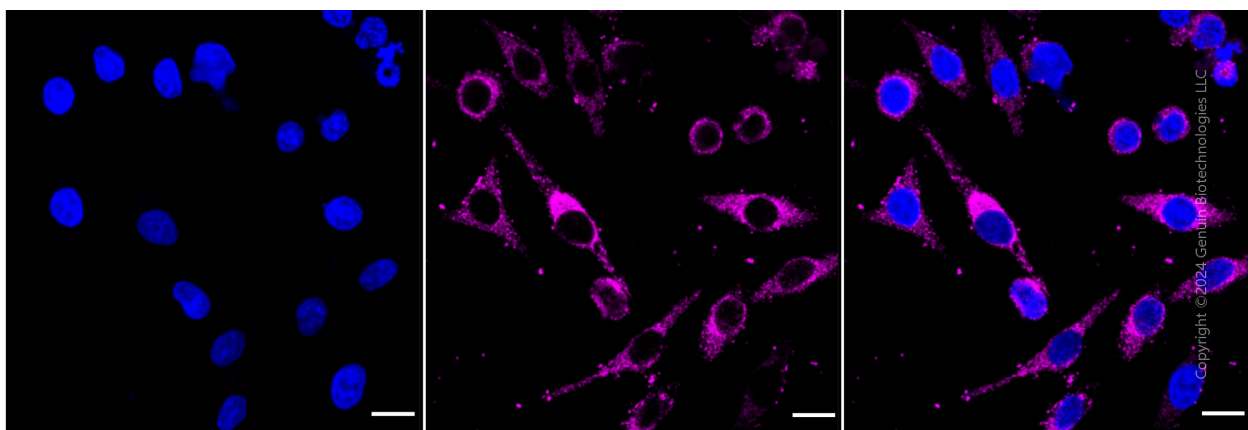
SUPPORT

SUPPORT@GENUINBIOTECH.COM
TEL: +1-540-855-7041

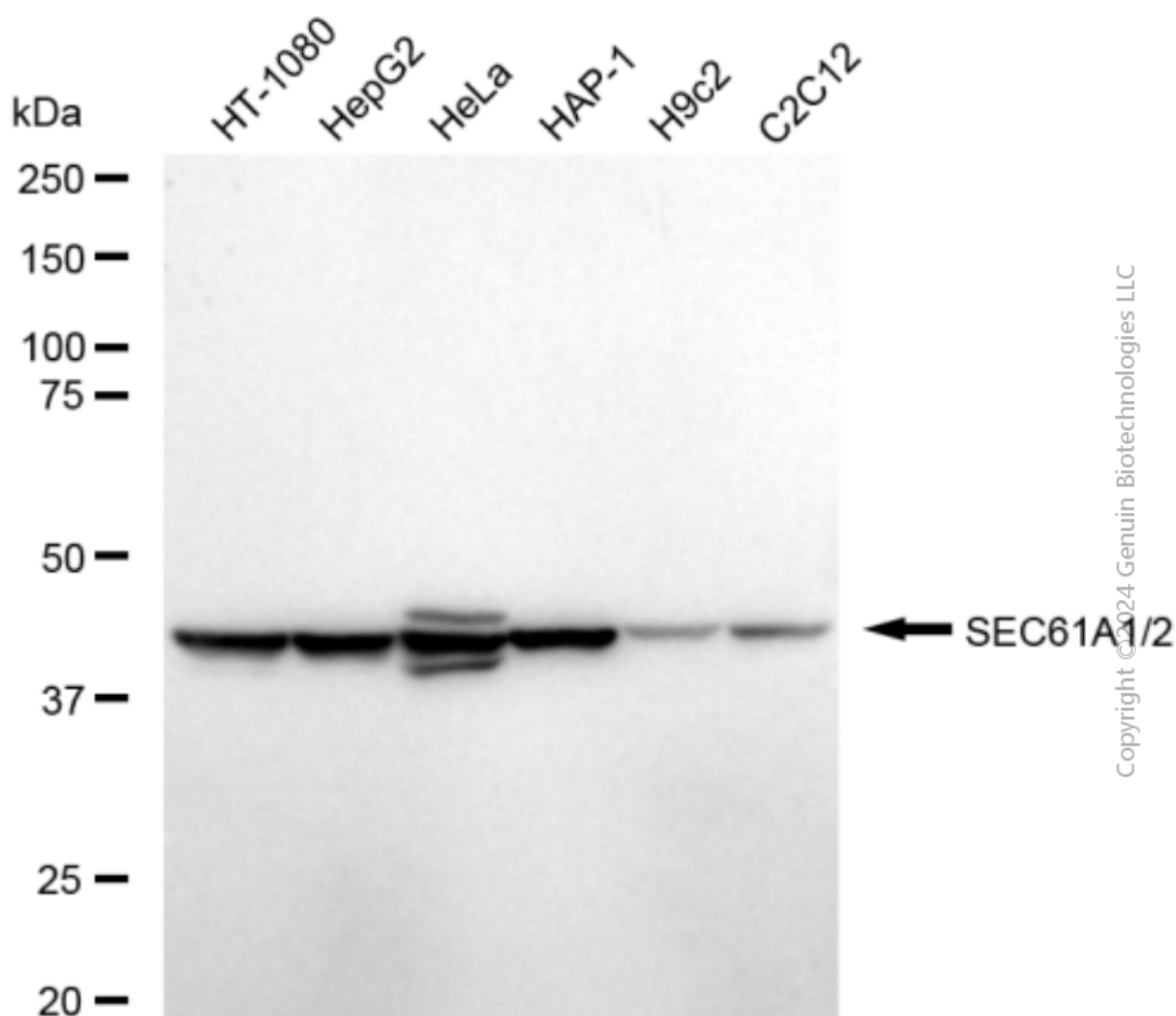
ORDERS

SALES@GENUINBIOTECH.COM
FAX: +1-540-855-7041

WWW.GENUINBIOTECH.COM



Immunocytochemical staining of HepG2 cells with anti-SEC61A1/2 antibody (Cat#2520, 1:1,000). Nuclei were stained blue with DAPI; SEC61A1/2 was stained magenta with Alexa Fluor® 647. Images were taken using Leica stellaris 5. Protein abundance based on laser Intensity and smart gain: High. Scale bar: 20 μ m.



Anti-SEC61A1/2 Recombinant Rabbit Monoclonal Antibody

PAGE 4

Western blotting analysis using anti-SEC61A1/2 antibody (Cat#2520). Total cell lysates (30 µg) from various cell lines were loaded and separated by SDS-PAGE. The blot was incubated with anti-SEC61A1/2 antibody (Cat#2520, 1:5,000) and HRP-conjugated goat anti rabbit secondary antibody (Cat#201, 1:20,000) respectively. Image was developed using FeQ™ ECL Substrate Kit (Cat#226).

SUPPORT

SUPPORT@GENUINBIOTECH.COM
TEL: +1-540-855-7041

ORDERS

SALES@GENUINBIOTECH.COM
FAX: +1-540-855-7041

WWW.GENUINBIOTECH.COM