

# Anti-Neurofilament Medium Chain Recombinant Rabbit Monoclonal Antibody



**Catalog #: 2530**

## Aliases

NEFM; Neurofilament Medium Chain; NF-M; NFM; NEF3; Neurofilament, Medium Polypeptide 150kDa; Neurofilament Medium Polypeptide; Neurofilament Triplet M Protein; 160 KDa Neurofilament Protein; Neurofilament 3; Neurofilament, Medium Polypeptide; Neurofilament-3 (150 KD Medium); Neurofilament Medium

## Background

Gene Name: NEFM

NCBI Gene Entry: [4741](#)

UniProt Entry: [P07197](#)

## Application Information

Molecular Weight: Predicted, 103 kDa; observed, 160 kDa

Clonality: Rabbit monoclonal antibody

Clone ID: 24GB1275

Species Reactivity: Human, mouse

Applications Tested: Western blotting (WB), flow cytometry (FCM), immunocytochemistry (IC)

## Immunogen

A synthesized peptide derived from human NEFM

## Isotype

Rabbit IgG

## Storage Buffer

Supplied in PBS (pH 7.4) containing 50% glycerol, and 0.02% sodium azide.

## Storage

Store at -20 °C for one year.

## Recommended Dilutions

Western Blotting (WB): 1:1,000-1:5,000

Flow Cytometry (FCM): 1:2,000

Immunocytochemistry (IC): 1:100-1:1,000

---

### SUPPORT

SUPPORT@GENUINBIOTECH.COM  
TEL: +1-540-855-7041

### ORDERS

SALES@GENUINBIOTECH.COM  
FAX: +1-540-855-7041

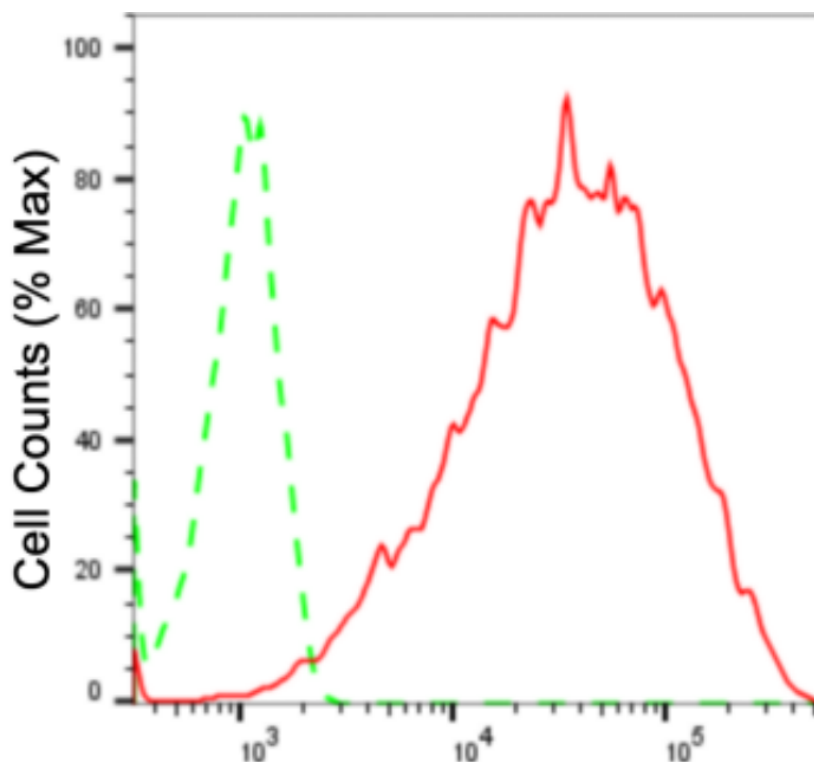
[WWW.GENUINBIOTECH.COM](http://WWW.GENUINBIOTECH.COM)

# Anti-Neurofilament Medium Chain Recombinant Rabbit Monoclonal Antibody

PAGE 2

**Note:** This product is for research use only.

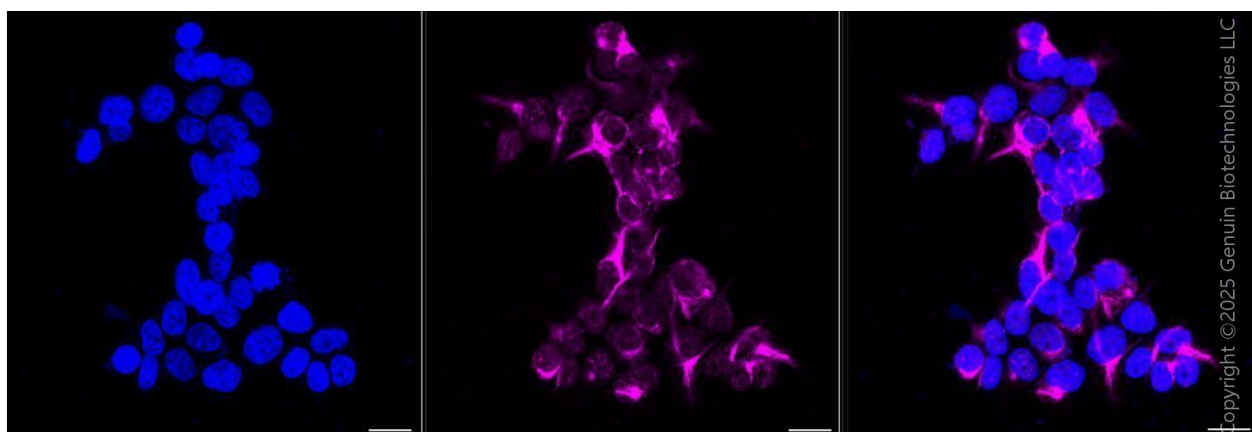
## Validation Data



Copyright ©2024 Genuin Biotechnologies LLC

### Neurofilament medium chain-Alexa Fluor® 647

Flow cytometric analysis of Neurofilament medium chain expression in Hela cells using anti-Neurofilament medium chain antibody (Cat#2530, 1:2,000). Green, isotype control; red, Neurofilament medium chain.



Copyright ©2025 Genuin Biotechnologies LLC

Immunocytochemical staining of Hela cells with anti-Neurofilament medium chain antibody (Cat#2530, 1:1,000). Nuclei were stained blue with DAPI; Neurofilament medium chain was stained magenta with Alexa Fluor® 647. Images were taken using Leica stellaris 5. Protein

#### SUPPORT

SUPPORT@GENUINBIOTECH.COM  
TEL: +1-540-855-7041

#### ORDERS

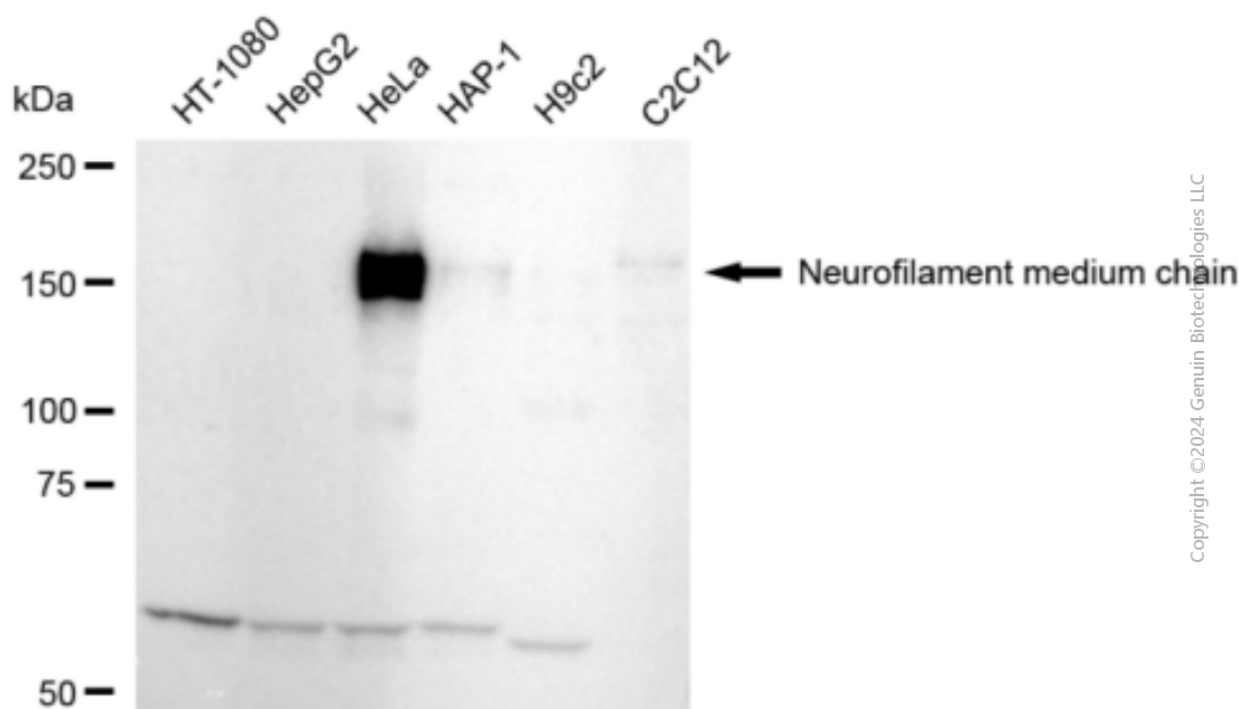
SALES@GENUINBIOTECH.COM  
FAX: +1-540-855-7041

[WWW.GENUINBIOTECH.COM](http://WWW.GENUINBIOTECH.COM)

## Anti-Neurofilament Medium Chain Recombinant Rabbit Monoclonal Antibody

PAGE 3

abundance based on laser Intensity and smart gain: High. Scale bar, 20  $\mu$ m.



Western blotting analysis using anti-Neurofilament medium chain antibody (Cat#2530). Total cell lysates (30  $\mu$ g) from various cell lines were loaded and separated by SDS-PAGE. The blot was incubated with anti-Neurofilament medium chain antibody (Cat#2530, 1:5,000) and HRP-conjugated goat anti-rabbit secondary antibody (Cat#201, 1:20,000) respectively. Image was developed using NaQ™ ECL Substrate Kit (Cat#716).

### SUPPORT

SUPPORT@GENUINBIOTECH.COM  
TEL: +1-540-855-7041

### ORDERS

SALES@GENUINBIOTECH.COM  
FAX: +1-540-855-7041

[WWW.GENUINBIOTECH.COM](http://WWW.GENUINBIOTECH.COM)