

Anti-Lumican Recombinant Rabbit Monoclonal Antibody



Catalog #: 2537

Aliases

LUM; Lumican; SLRR2D; LDC; Keratan Sulfate Proteoglycan Lumican; Lumican Proteoglycan; KSPG Lumican; Epididymis Secretory Sperm Binding Protein

Background

Gene Name: LUM

NCBI Gene Entry: [4060](#)

UniProt Entry: [P51884](#)

Application Information

Molecular Weight: Predicted, 38 kDa; observed, 52 kDa

Clonality: Rabbit monoclonal antibody

Clone ID: 24GB1305

Species Reactivity: Human, mouse, rat

Applications Tested: Western blotting (WB), flow cytometry (FCM), immunocytochemistry (IC)

Immunogen

A synthesized peptide derived from human LUM

Isotype

Rabbit IgG

Storage Buffer

Supplied in PBS (pH 7.4) containing 50% glycerol, and 0.02% sodium azide.

Storage

Store at -20 °C for one year.

Recommended Dilutions

Western Blotting (WB): 1:1,000-1:5,000

Flow Cytometry (FCM): 1:2,000

Immunocytochemistry (IC): 1:100-1:1,000

Note: This product is for research use only.

Validation Data

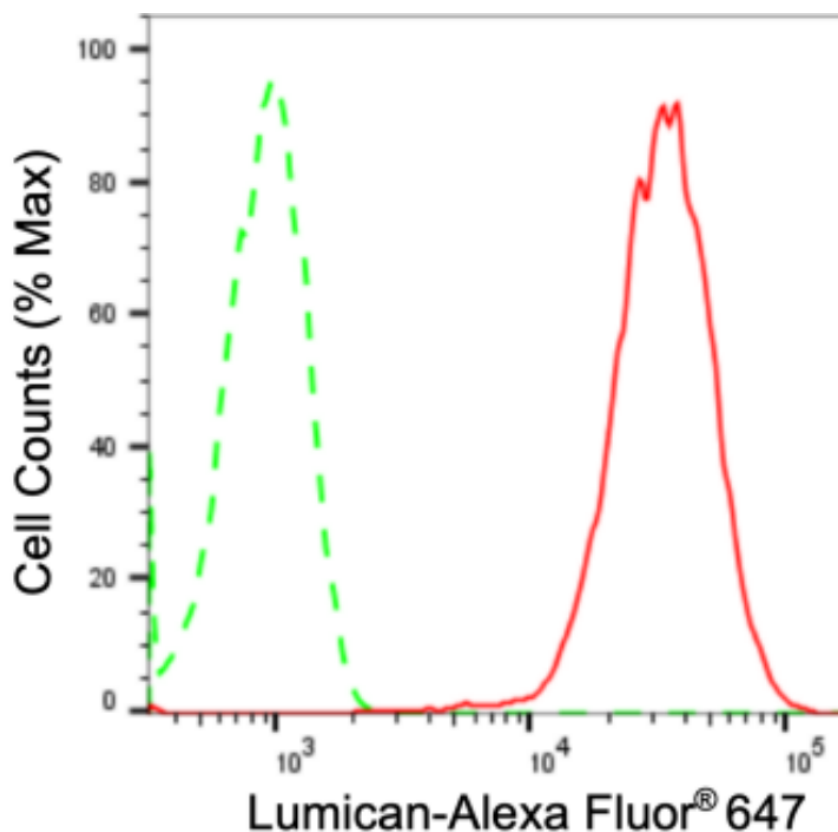
SUPPORT

SUPPORT@GENUINBIOTECH.COM
TEL: +1-540-855-7041

ORDERS

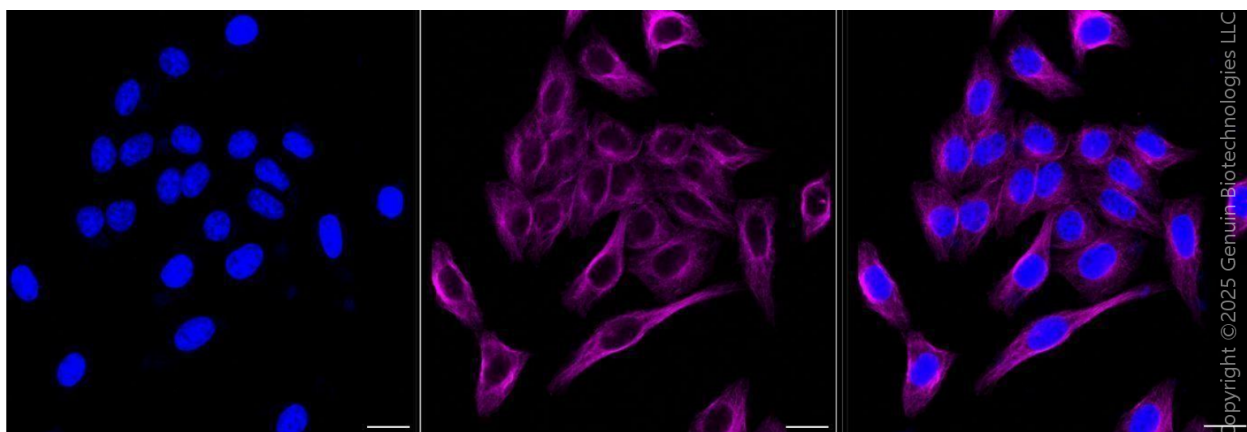
SALES@GENUINBIOTECH.COM
FAX: +1-540-855-7041

WWW.GENUINBIOTECH.COM



Copyright ©2024 Genuin Biotechnologies LLC

Flow cytometric analysis of Lumican expression in HepG2 cells using anti-Lumican antibody (Cat#2537, 1:2,000). Green, isotype control; red, Lumican.



Copyright ©2025 Genuin Biotechnologies LLC

Immunocytochemical staining of HepG2 cells with anti-Lumican antibody (Cat#2537, 1:1,000). Nuclei were stained blue with DAPI; Lumican was stained magenta with Alexa Fluor® 647. Images were taken using Leica stellaris 5. Protein abundance based on laser Intensity and smart gain: High. Scale bar, 20 μ m.

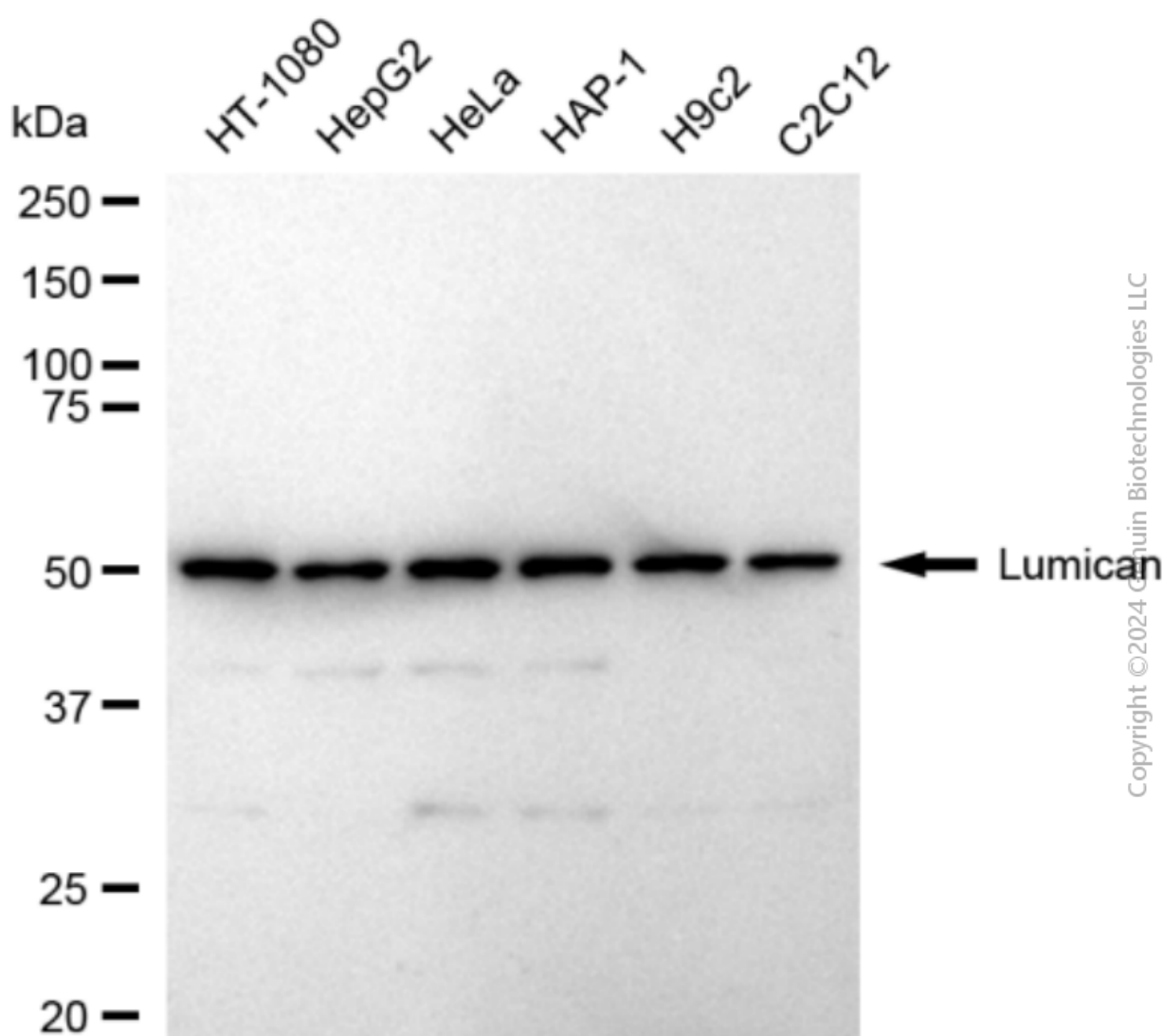
SUPPORT

SUPPORT@GENUINBIOTECH.COM
TEL: +1-540-855-7041

ORDERS

SALES@GENUINBIOTECH.COM
FAX: +1-540-855-7041

WWW.GENUINBIOTECH.COM



Copyright © 2024 Genuin Biotechnologies LLC

Western blotting analysis using anti-Lumican antibody (Cat#2537). Total cell lysates (10 µg) from various cell lines were loaded and separated by SDS-PAGE. The blot was incubated with anti-Lumican antibody (Cat#2537, 1:5,000) and HRP-conjugated goat anti-rabbit secondary antibody (Cat#201, 1:20,000) respectively. Image was developed using NaQ™ ECL Substrate Kit (Cat#716).