

# Anti-RGMA Recombinant Rabbit Monoclonal Antibody



**Catalog #: 2540**

## Aliases

RGMA; Repulsive Guidance M

olecule BMP Co-Receptor A; RGM; Repulsive Guidance Molecule Family Member A; Repulsive Guidance Molecule A; RGM Domain Family, Member A; RGM Domain Family Member A

## Background

Gene Name: RGMA

NCBI Gene Entry: [56963](#)

UniProt Entry: [Q96B86](#)

## Application Information

Molecular Weight: Predicted, 49 kDa; observed, 37 kDa

Clonality: Rabbit monoclonal antibody

Clone ID: 24GB1320

Species Reactivity: Human, mouse, rat

Applications Tested: Western blotting (WB), flow cytometry (FCM), immunocytochemistry (IC)

## Immunogen

A synthesized peptide derived from human RGMA

## Isotype

Rabbit IgG

## Storage Buffer

Supplied in PBS (pH 7.4) containing 50% glycerol, and 0.02% sodium azide.

## Storage

Store at -20 °C for one year.

## Recommended Dilutions

Western Blotting (WB): 1:1,000-1:5,000

Flow Cytometry (FCM): 1:2,000

Immunocytochemistry (IC): 1:100-1:1,000

**Note:** This product is for research use only.

---

### SUPPORT

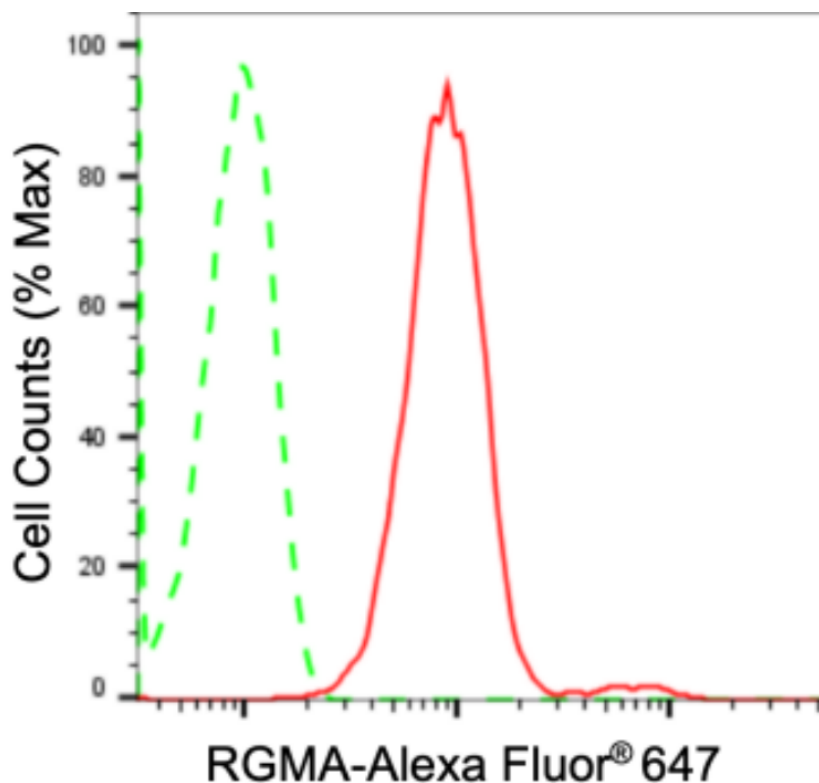
SUPPORT@GENUINBIOTECH.COM  
TEL: +1-540-855-7041

### ORDERS

SALES@GENUINBIOTECH.COM  
FAX: +1-540-855-7041

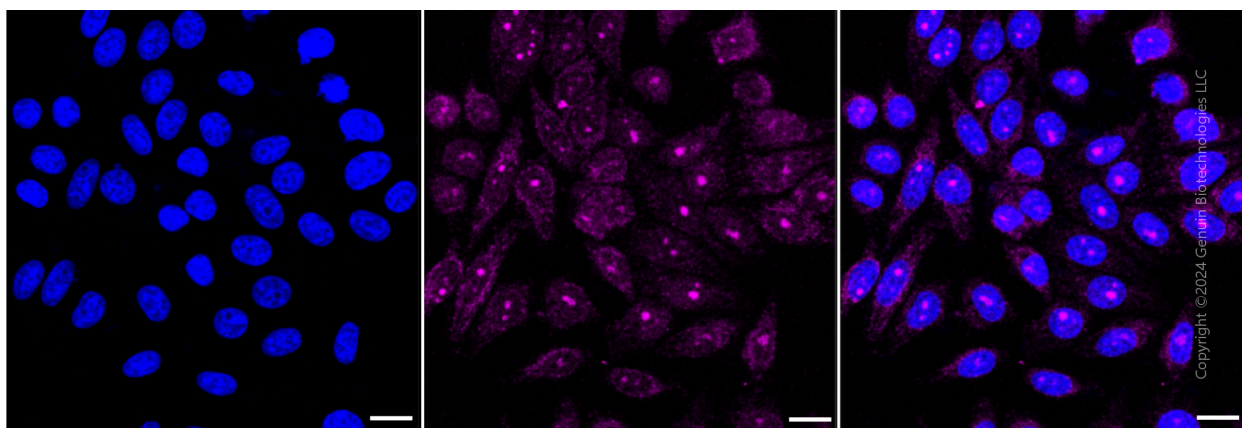
[WWW.GENUINBIOTECH.COM](http://WWW.GENUINBIOTECH.COM)

## Validation Data

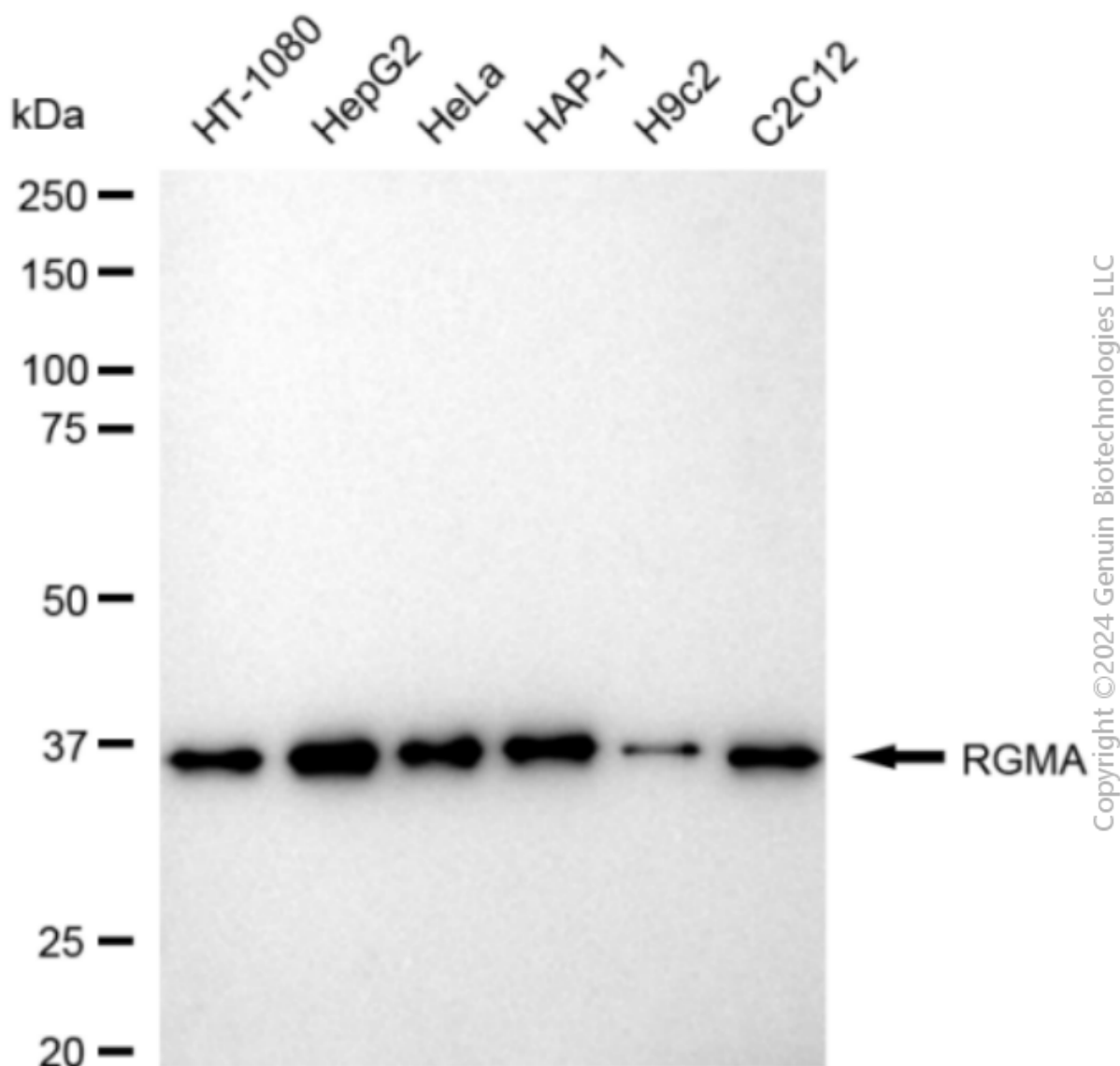


Copyright ©2024 Genuin Biotechnologies LLC

Flow cytometric analysis of RGMA expression in HepG2 cells using anti-RGMA antibody (Cat#2540, 1:2,000). Green, isotype control; red, RGMA.



Copyright ©2024 Genuin Biotechnologies LLC



Western blotting analysis using anti-RGMA antibody (Cat#2540). Total cell lysates (30 µg) from various cell lines were loaded and separated by SDS-PAGE. The blot was incubated with anti-RGMA antibody (Cat#2540, 1:5,000) and HRP-conjugated goat anti-rabbit secondary antibody (Cat#201, 1:20,000) respectively. Image was developed using FeQ™ ECL Substrate Kit (Cat#226).