

Anti-PPP6C Recombinant Rabbit Monoclonal Antibody



Catalog #: 2542

Aliases

PPP6C; Protein Phosphatase 6 Catalytic Subunit; PP6; Serine/Threonine-Protein Phosphatase 6 Catalytic Subunit; EC 3.1.3.16; PP6C; Serine/Threonine Protein Phosphatase Catalytic Subunit; Protein Phosphatase 6, Catalytic Subunit; PPP6

Background

Gene Name: PPP6C

NCBI Gene Entry: [5537](#)

UniProt Entry: [O00743](#)

Application Information

Molecular Weight: Predicted, 35 kDa; observed, 32 kDa

Clonality: Rabbit monoclonal antibody

Clone ID: 24GB1330

Species Reactivity: Human, mouse, rat

Applications Tested: Western blotting (WB), flow cytometry (FCM), immunocytochemistry (IC)

Immunogen

A synthesized peptide derived from human PPP6C

Isotype

Rabbit IgG

Storage Buffer

Supplied in PBS (pH 7.4) containing 50% glycerol, and 0.02% sodium azide.

Storage

Store at -20 °C for one year.

Recommended Dilutions

Western Blotting (WB): 1:1,000-1:5,000

Flow Cytometry (FCM): 1:2,000

Immunocytochemistry (IC): 1:100-1:1,000

Note: This product is for research use only.

SUPPORT

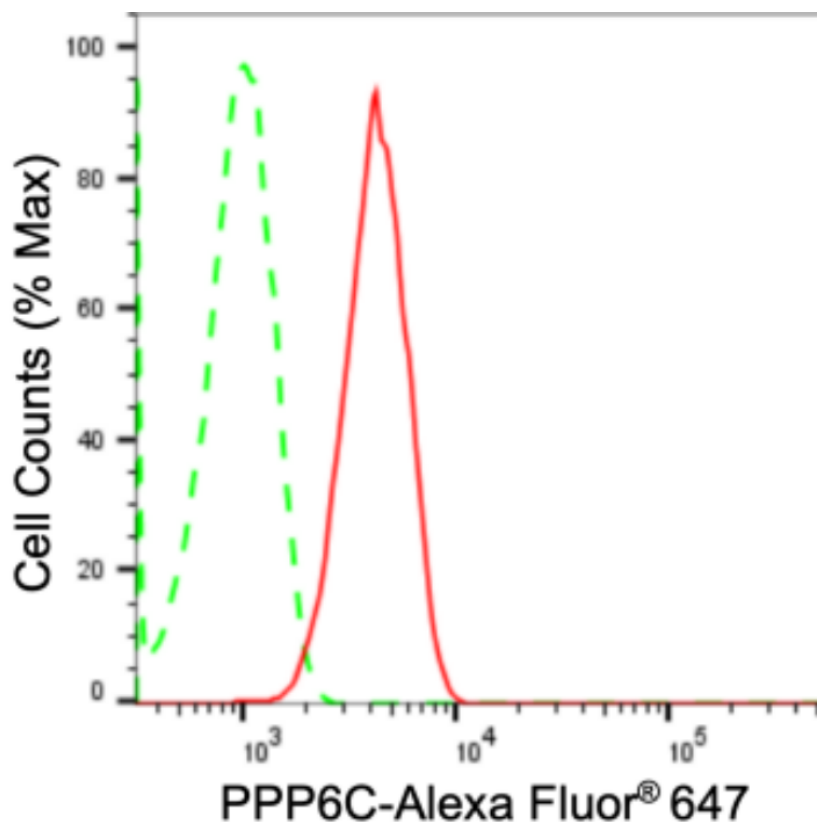
SUPPORT@GENUINBIOTECH.COM
TEL: +1-540-855-7041

ORDERS

SALES@GENUINBIOTECH.COM
FAX: +1-540-855-7041

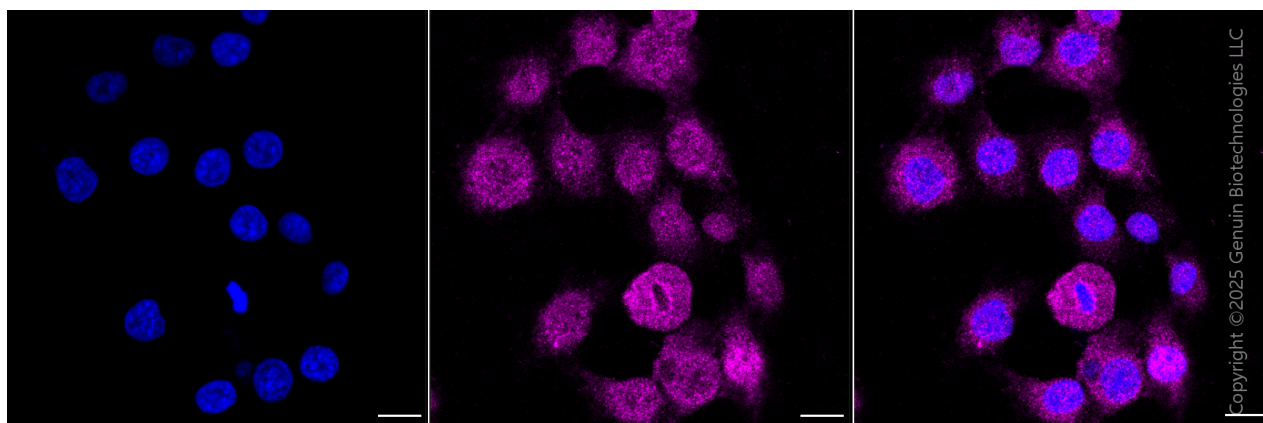
WWW.GENUINBIOTECH.COM

Validation Data



Copyright ©2024 Genuin Biotechnologies LLC

Flow cytometric analysis of PPP6C expression in HT-1080 cells using anti-PPP6C antibody (Cat#2542, 1:2,000). Green, isotype control; red, PPP6C.



Copyright ©2025 Genuin Biotechnologies LLC

Immunocytochemical staining of HT-1080 cells with anti-PPP6C antibody (Cat#2542, 1:1,000). Nuclei were stained blue with DAPI; PPP6C was stained magenta with Alexa Fluor® 647. Images were taken using Leica stellaris 5. Protein abundance based on laser Intensity and smart gain: Medium. Scale bar, 20 μm.

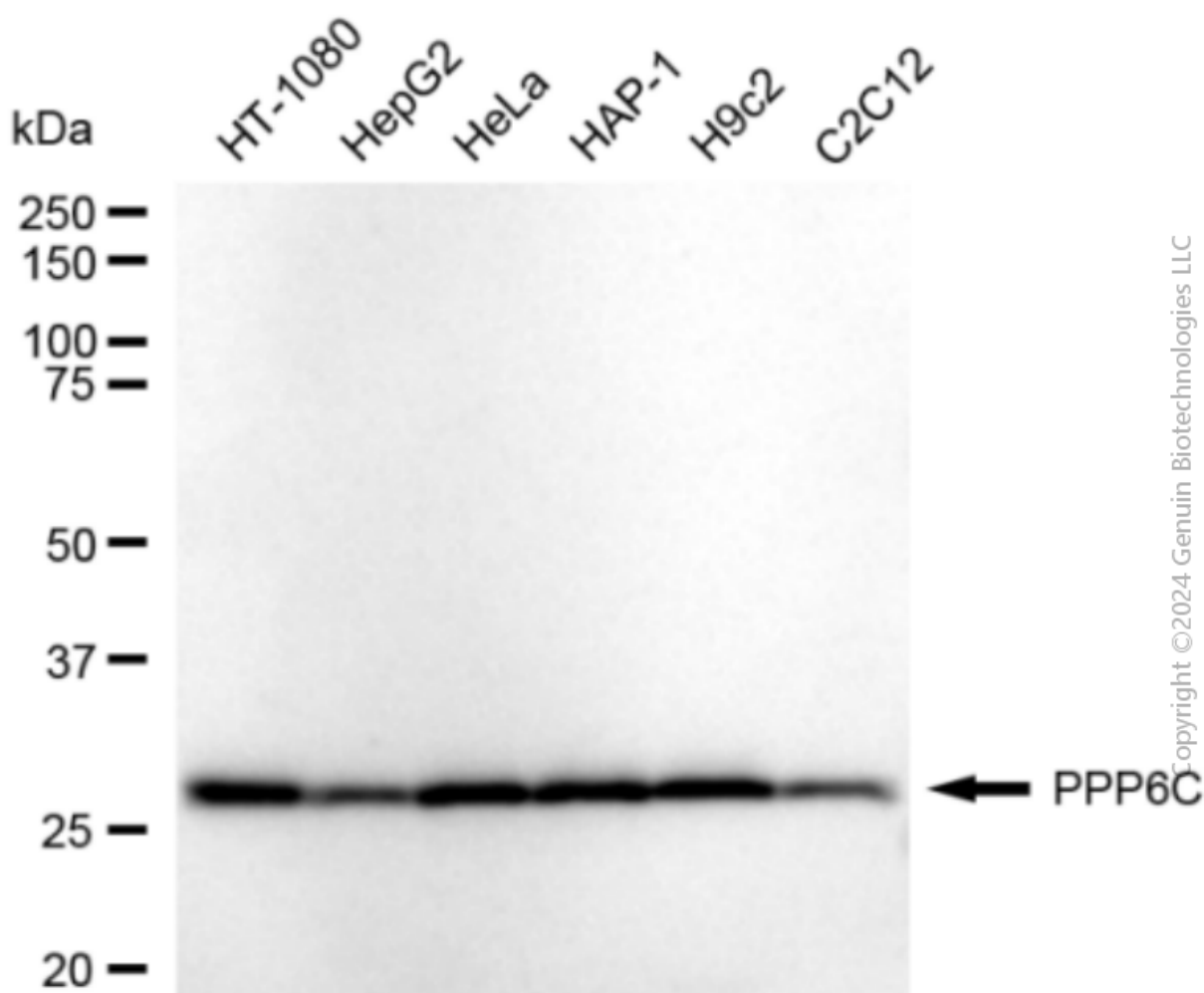
SUPPORT

SUPPORT@GENUINBIOTECH.COM
TEL: +1-540-855-7041

ORDERS

SALES@GENUINBIOTECH.COM
FAX: +1-540-855-7041

WWW.GENUINBIOTECH.COM



Western blotting analysis using anti-PPP6C antibody (Cat#2542). Total cell lysates (30 μ g) from various cell lines were loaded and separated by SDS-PAGE. The blot was incubated with anti-PPP6C antibody (Cat#2542, 1:5,000) and HRP-conjugated goat anti-rabbit secondary antibody (Cat#201, 1:20,000) respectively. Image was developed using FeQ™ ECL Substrate Kit (Cat#226).