

Anti-Regulator Of Calcineurin 1 Recombinant Rabbit Monoclonal Antibody



Catalog #: 2543

Aliases

RCAN1; Regulator Of Calcineurin 1; DSCR1; Myocyte-Enriched Calcineurin-Interacting Protein 1; Down Syndrome Critical Region Gene 1; Calcipressin-1; ADAPT78; MCIP1; CSP1; DSC1; Modulatory Calcineurin-Interacting Protein 1; Down Syndrome Critical Region Protein 1; Calcium And Oxidant-Inducible MRNA; Down Syndrome Candidate Region 1; Near DSCR Proline-Rich Protein; Adapt78; RCN1

Background

Gene Name: RCAN1

NCBI Gene Entry: [1827](#)

UniProt Entry: [P53805](#)

Application Information

Molecular Weight: Predicted, 28 kDa; observed, 28 kDa

Clonality: Rabbit monoclonal antibody

Clone ID: 24GB1335

Species Reactivity: Human, mouse, rat

Applications Tested: Western blotting (WB), flow cytometry (FCM), immunocytochemistry (IC)

Immunogen

A synthesized peptide derived from human Calcipressin 1

Isotype

Rabbit IgG

Storage Buffer

Supplied in PBS (pH 7.4) containing 50% glycerol, and 0.02% sodium azide.

Storage

Store at -20 °C for one year.

Recommended Dilutions

Western Blotting (WB): 1:1,000-1:5,000

Flow Cytometry (FCM): 1:2,000

Immunocytochemistry (IC): 1:100-1:1,000

SUPPORT

SUPPORT@GENUINBIOTECH.COM
TEL: +1-540-855-7041

ORDERS

SALES@GENUINBIOTECH.COM
FAX: +1-540-855-7041

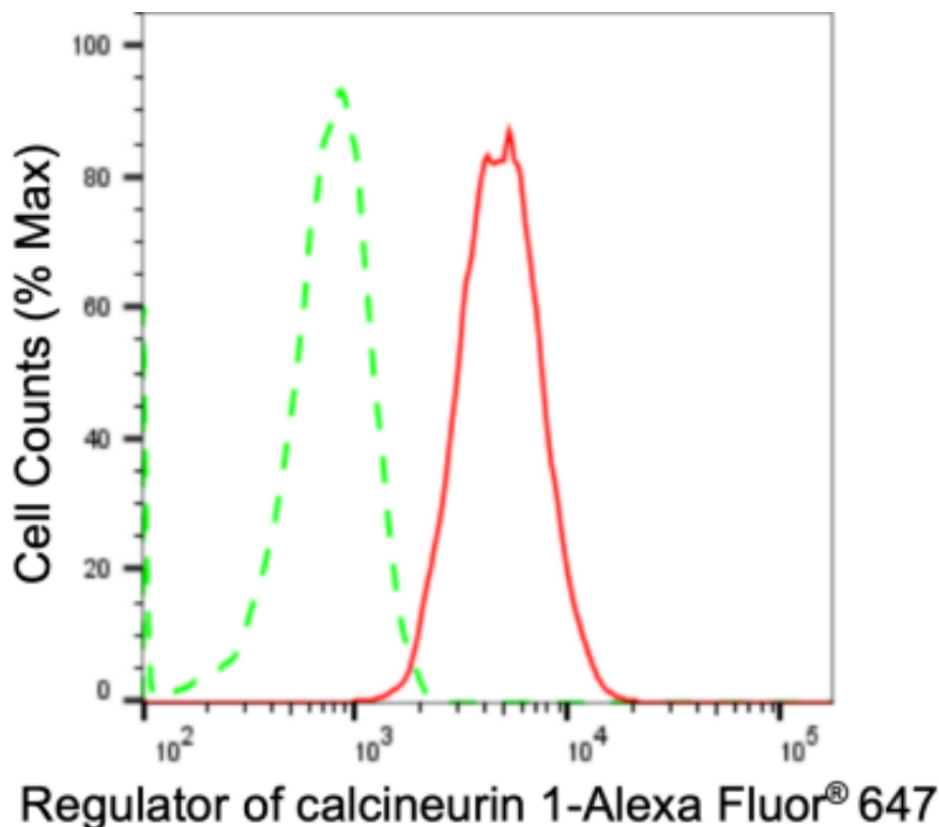
WWW.GENUINBIOTECH.COM

Anti-Regulator Of Calcineurin 1 Recombinant Rabbit Monoclonal Antibody

PAGE 2

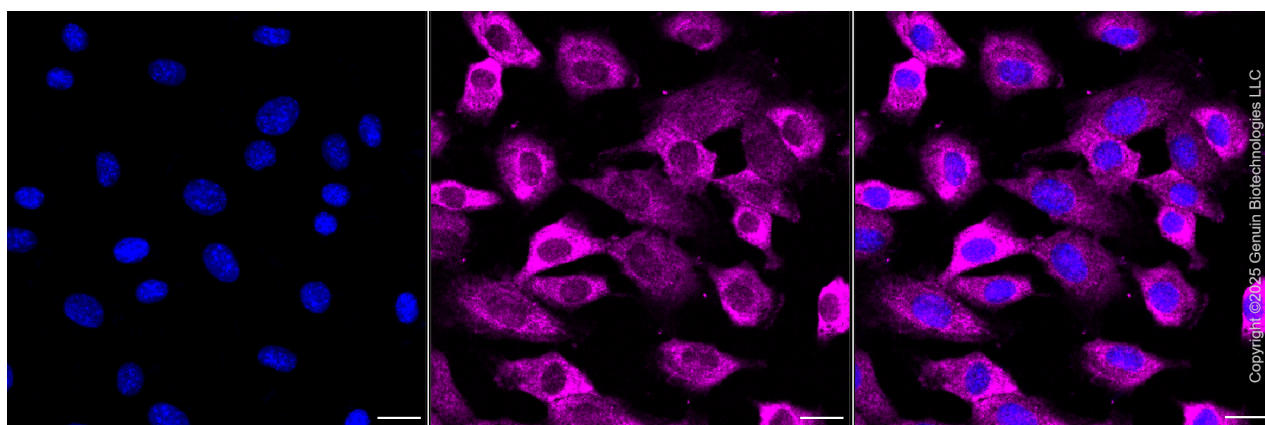
Note: This product is for research use only.

Validation Data



Copyright ©2024 Genuin Biotechnologies LLC

Flow cytometric analysis of Regulator of calcineurin 1 expression in C2C12 cells using anti-Regulator of calcineurin 1 antibody (Cat#2543, 1:2,000). Green, isotype control; red, Regulator of calcineurin 1.



Immunocytochemical staining of C2C12 cells with anti-Regulator of calcineurin 1 antibody (Cat#2543, 1:1,000). Nuclei were stained blue with DAPI; Regulator of calcineurin 1 was stained magenta with Alexa Fluor® 647. Images were taken using Leica stellaris 5. Protein abundance based on laser Intensity and smart gain: High. Scale bar, 20 μ m.

SUPPORT

SUPPORT@GENUINBIOTECH.COM
TEL: +1-540-855-7041

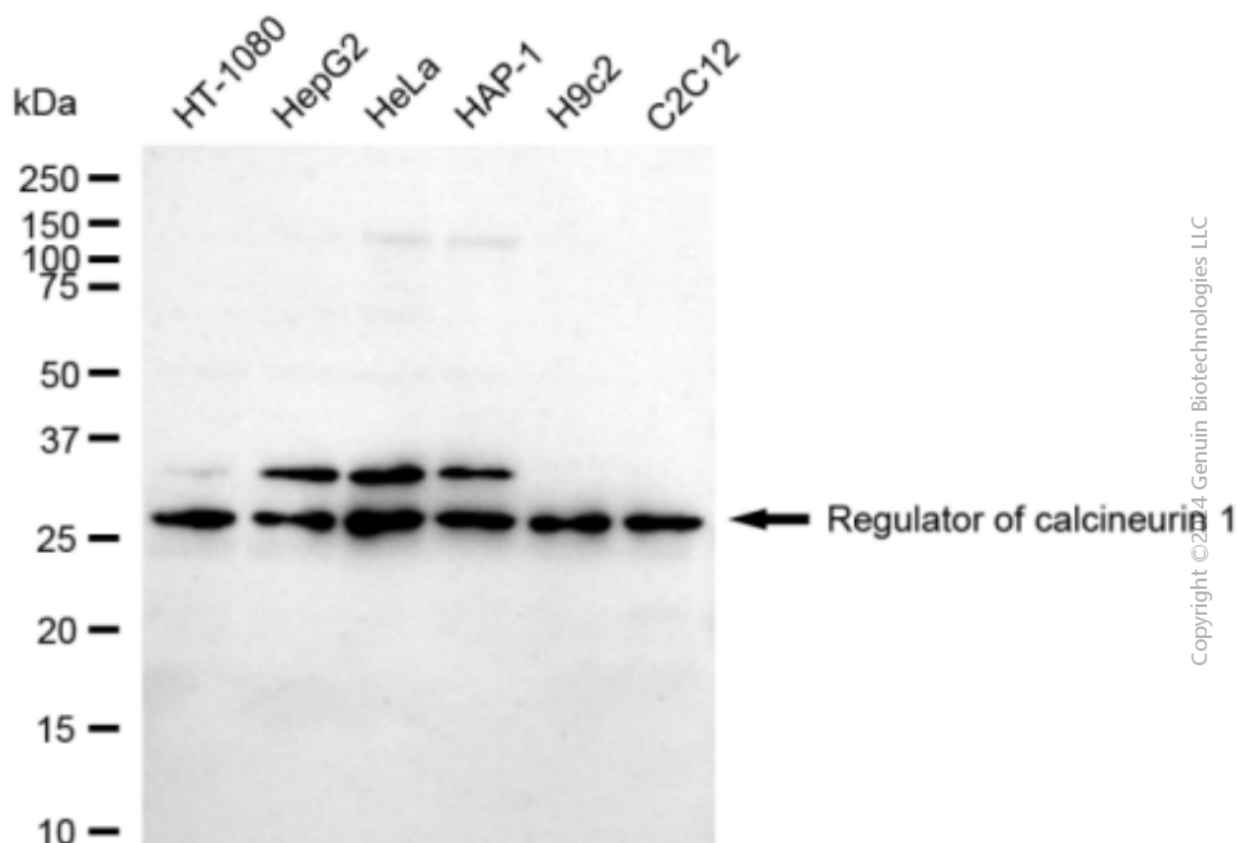
ORDERS

SALES@GENUINBIOTECH.COM
FAX: +1-540-855-7041

WWW.GENUINBIOTECH.COM

Anti-Regulator Of Calcineurin 1 Recombinant Rabbit Monoclonal Antibody

PAGE 3



Western blotting analysis using anti-Regulator of calcineurin 1 antibody (Cat#2543). Total cell lysates (30 μ g) from various cell lines were loaded and separated by SDS-PAGE. The blot was incubated with anti-Regulator of calcineurin 1 antibody (Cat#2543, 1:5,000) and HRP-conjugated goat anti-rabbit secondary antibody (Cat#201, 1:20,000) respectively. Image was developed using FeQ™ ECL Substrate Kit (Cat#226).

SUPPORT

SUPPORT@GENUINBIOTECH.COM
TEL: +1-540-855-7041

ORDERS

SALES@GENUINBIOTECH.COM
FAX: +1-540-855-7041

WWW.GENUINBIOTECH.COM