

# Anti-PPCS Recombinant Rabbit Monoclonal Antibody



**Catalog #: 2546**

## Aliases

PPCS; Phosphopantothenoylcysteine Synthetase; Phosphopantothenate--Cysteine Ligase; PPC Synthetase;  
FLJ11838; EC 6.3.2.51; CMD2C; COAB;

## Background

Gene Name: PPCS  
NCBI Gene Entry: [79717](#)  
UniProt Entry: [Q9HAB8](#)

## Application Information

Molecular Weight: Predicted, 34 kDa; observed, 34 kDa  
Clonality: Rabbit monoclonal antibody  
Clone ID: 24GB1350  
Species Reactivity: Human  
Applications Tested: Western blotting (WB), flow cytometry (FCM), immunocytochemistry (IC)

## Immunogen

A synthesized peptide derived from human PPCS

## Isotype

Rabbit IgG

## Storage Buffer

Supplied in PBS (pH 7.4) containing 50% glycerol, and 0.02% sodium azide.

## Storage

Store at -20 °C for one year.

## Recommended Dilutions

Western Blotting (WB): 1:1,000-1:5,000  
Flow Cytometry (FCM): 1:2,000  
Immunocytochemistry (IC): 1:100-1:1,000

**Note:** This product is for research use only.

---

### SUPPORT

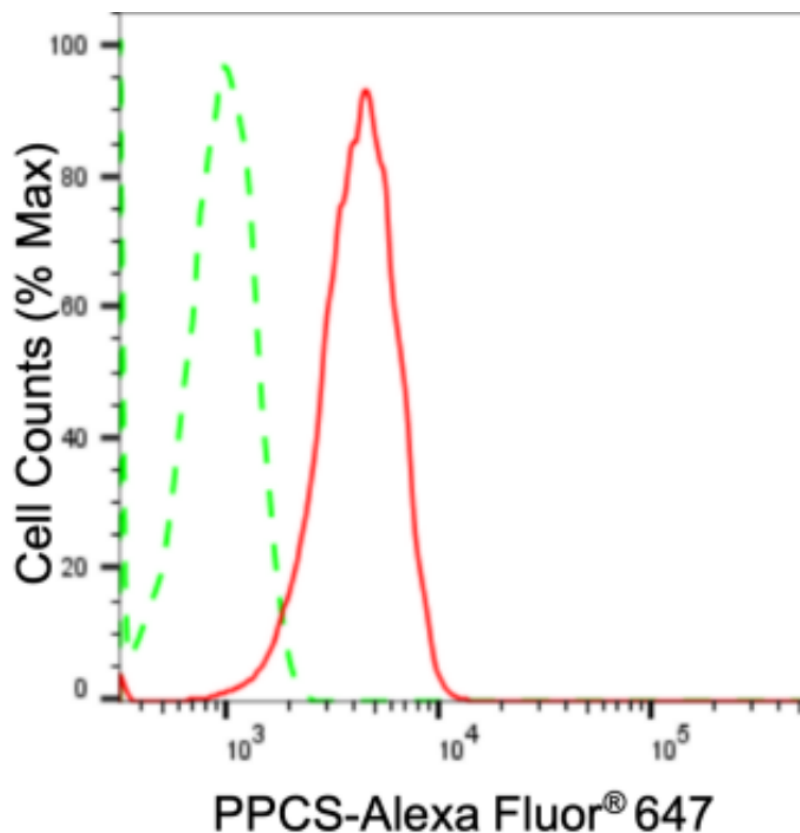
SUPPORT@GENUINBIOTECH.COM  
TEL: +1-540-855-7041

### ORDERS

SALES@GENUINBIOTECH.COM  
FAX: +1-540-855-7041

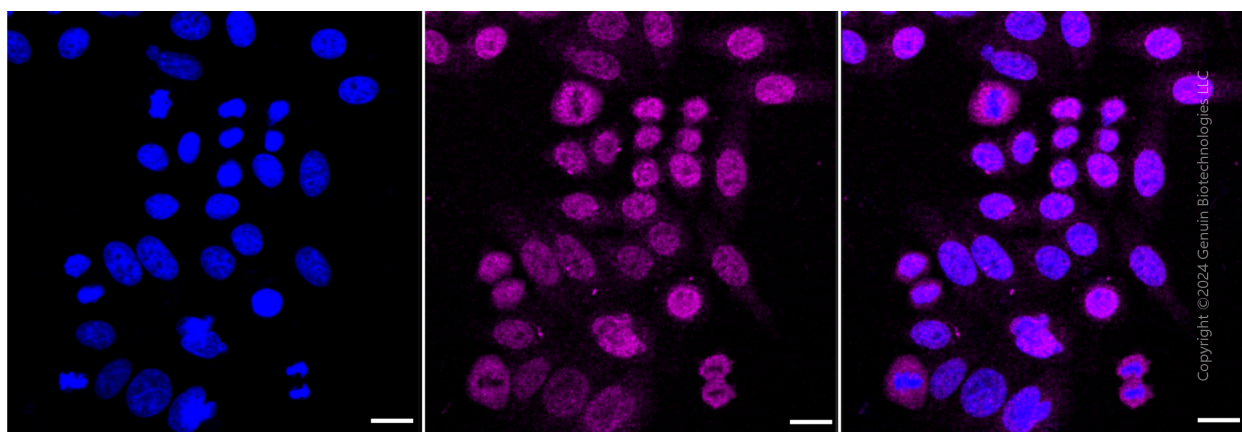
[WWW.GENUINBIOTECH.COM](http://WWW.GENUINBIOTECH.COM)

## Validation Data



Copyright ©2024 Genuin Biotechnologies LLC

Flow cytometric analysis of PPCS expression in HepG2 cells using anti-PPCS antibody (Cat#2546, 1:2,000). Green, isotype control; red, PPCS.



Immunocytochemical staining of HepG2 cells with anti-PPCS antibody (Cat#2546, 1:1,000). Nuclei were stained blue with DAPI; PPCS was stained magenta with Alexa Fluor® 647. Images were taken using Leica stellaris 5. Protein abundance based on laser Intensity and smart gain: Medium. Scale bar: 20  $\mu$ m.

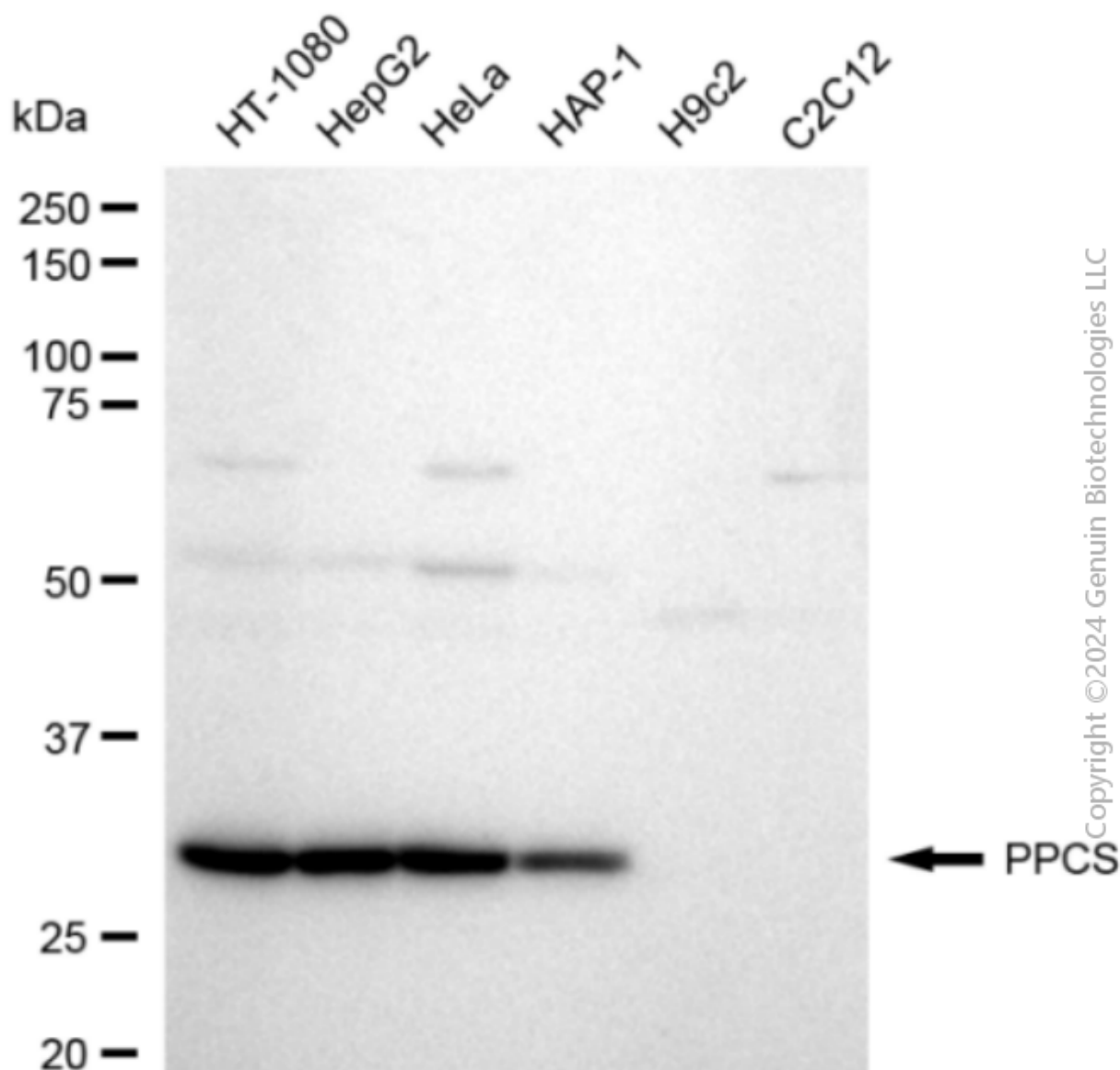
### SUPPORT

SUPPORT@GENUINBIOTECH.COM  
TEL: +1-540-855-7041

### ORDERS

SALES@GENUINBIOTECH.COM  
FAX: +1-540-855-7041

WWW.GENUINBIOTECH.COM



Western blotting analysis using anti-PPCS antibody (Cat#2546). Total cell lysates (30  $\mu$ g) from various cell lines were loaded and separated by SDS-PAGE. The blot was incubated with anti-PPCS antibody (Cat#2546, 1:5,000) and HRP-conjugated goat anti-rabbit secondary antibody (Cat#201, 1:20,000) respectively. Image was developed using FeQ™ ECL Substrate Kit (Cat#226).