

Anti-PLEKHA1 Recombinant Rabbit Monoclonal Antibody



Catalog #: 2548

Aliases

PLEKHA1; Pleckstrin Homology Domain Containing A1; TAPP1; Pleckstrin Homology Domain Containing, Family A (Phosphoinositide Binding Specific) Member 1; Pleckstrin Homology Domain-Containing Family A Member 1; Tandem PH Domain-Containing Protein 1; Pleckstrin Homology Domain-Containing, Family A (Phosphoinositide Binding Specific) Member 1; PH Domain-Containing Family A Member 1; Tandem PH Domain Containing Protein-1; TAPP-1

Background

Gene Name: PLEKHA1

NCBI Gene Entry: [59338](#)

UniProt Entry: [Q9HB21](#)

Application Information

Molecular Weight: Predicted, 46 kDa; observed, 43 kDa

Clonality: Rabbit monoclonal antibody

Clone ID: 24GB1360

Species Reactivity: Human, mouse, rat

Applications Tested: Western blotting (WB), flow cytometry (FCM), immunocytochemistry (IC)

Immunogen

A synthesized peptide derived from human TAPP1

Isotype

Rabbit IgG

Storage Buffer

Supplied in PBS (pH 7.4) containing 50% glycerol, and 0.02% sodium azide.

Storage

Store at -20 °C for one year.

Recommended Dilutions

Western Blotting (WB): 1:1,000-1:5,000

Flow Cytometry (FCM): 1:2,000

Immunocytochemistry (IC): 1:100-1:1,000

SUPPORT

SUPPORT@GENUINBIOTECH.COM
TEL: +1-540-855-7041

ORDERS

SALES@GENUINBIOTECH.COM
FAX: +1-540-855-7041

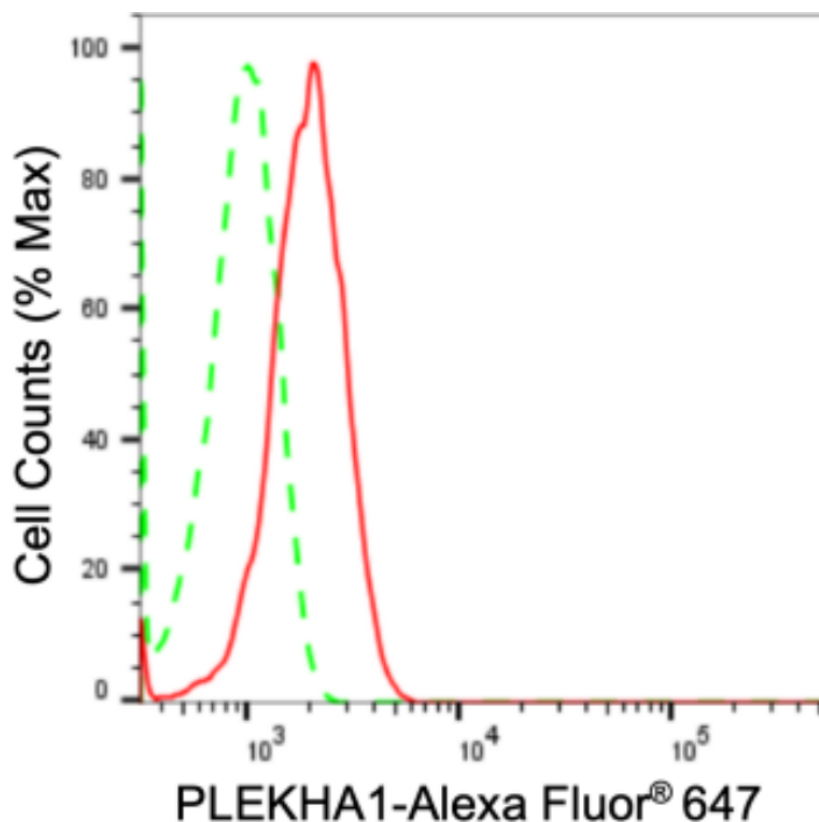
WWW.GENUINBIOTECH.COM

Anti-PLEKHA1 Recombinant Rabbit Monoclonal Antibody

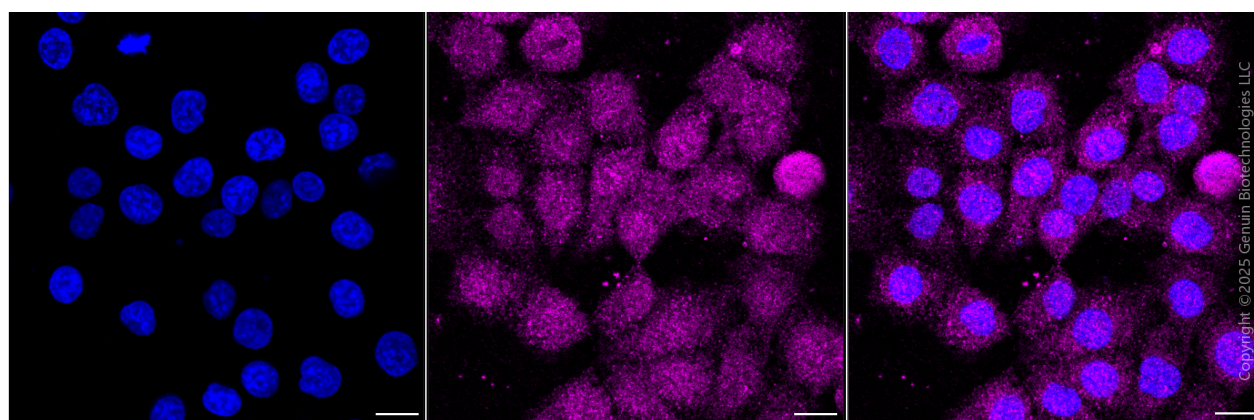
PAGE 2

Note: This product is for research use only.

Validation Data



Copyright ©2024 Genuin Biotechnologies LLC



Copyright ©2025 Genuin Biotechnologies LLC

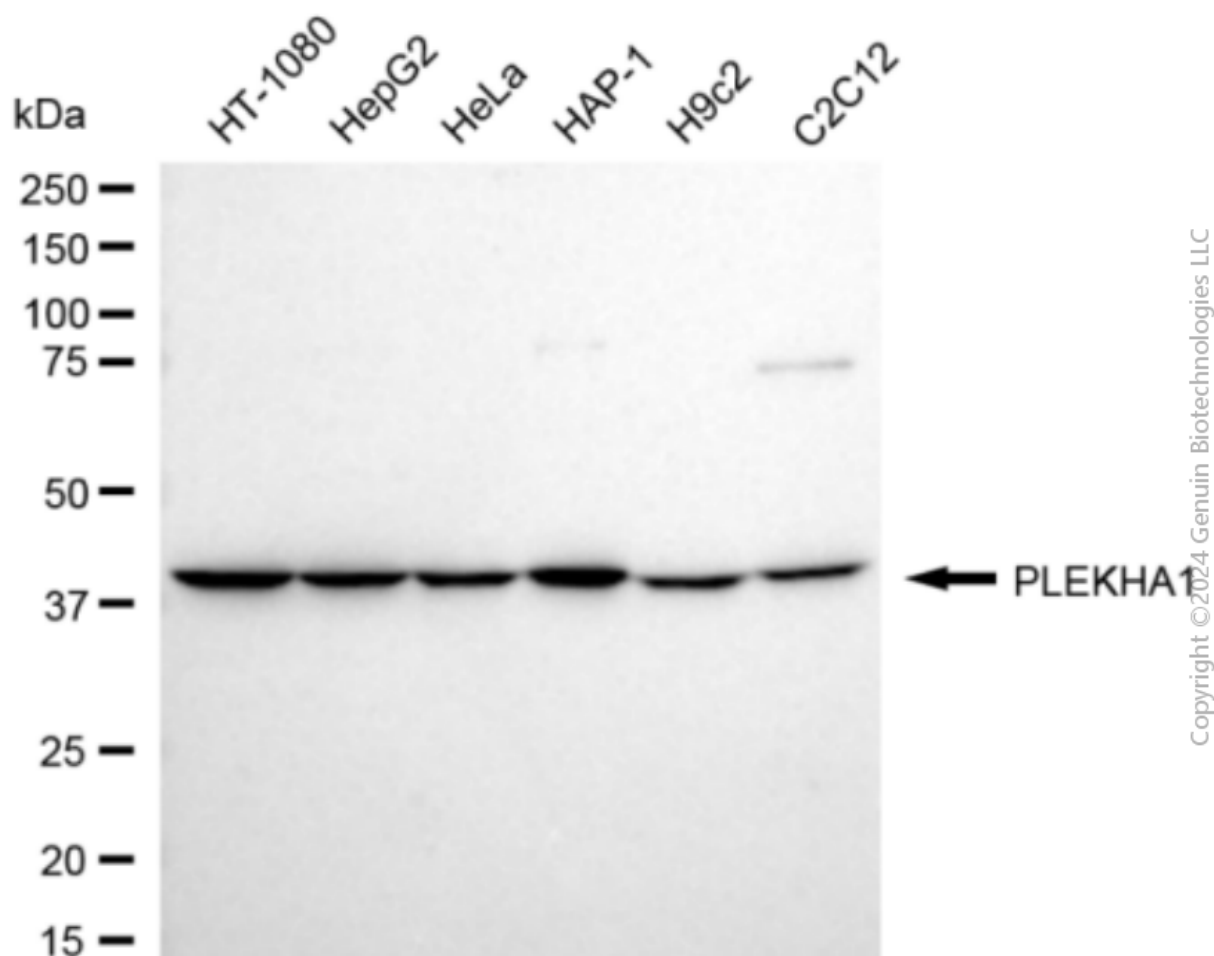
SUPPORT

SUPPORT@GENUINBIOTECH.COM
TEL: +1-540-855-7041

ORDERS

SALES@GENUINBIOTECH.COM
FAX: +1-540-855-7041

WWW.GENUINBIOTECH.COM



Western blotting analysis using anti-PLEKHA1 antibody (Cat#2548). Total cell lysates (30 μ g) from various cell lines were loaded and separated by SDS-PAGE. The blot was incubated with anti-PLEKHA1 antibody (Cat#2548, 1:5,000) and HRP-conjugated goat anti-rabbit secondary antibody (Cat#201, 1:20,000) respectively. Image was developed using FeQ™ ECL Substrate Kit (Cat#226).