

# Anti-Enolase 2 Recombinant Rabbit Monoclonal Antibody



**Catalog #: 2552**

## Aliases

ENO2; Enolase; NSE; Gamma-Enolase; 2-Phospho-D-Glycerate Hydro-Lyase; Enolase 2 (Gamma, Neuronal); Neuronal Enriched Enolase; Neuron-Specific Enolase; Neural Enolase; EC 4.2.1.11; Epididymis Secretory Protein Li297; 2-Phospho-D-Glycerate Hydrolyase; Neuron Specific Gamma Enolase; Neurone-Specific Enolase; Neuron Specific Enolase; HEL-S-279

## Background

Gene Name: ENO2

NCBI Gene Entry: [2026](#)

UniProt Entry: [P09104](#)

## Application Information

Molecular Weight: Predicted, 47 kDa; observed, 47 kDa

Clonality: Rabbit monoclonal antibody

Clone ID: 23GB1190

Species Reactivity: Human, mouse, rat

Applications Tested: Western blotting (WB), flow cytometry (FCM), immunocytochemistry (IC)

## Immunogen

A synthesized peptide derived from human NSE

## Isotype

Rabbit IgG

## Storage Buffer

Supplied in PBS (pH 7.4) containing 50% glycerol, and 0.02% sodium azide.

## Storage

Store at -20 °C for one year.

## Recommended Dilutions

Western Blotting (WB): 1:2,000-1:10,000

Flow Cytometry (FCM): 1:2,000

Immunocytochemistry (IC): 1:100-1:1,000

---

### SUPPORT

SUPPORT@GENUINBIOTECH.COM  
TEL: +1-540-855-7041

### ORDERS

SALES@GENUINBIOTECH.COM  
FAX: +1-540-855-7041

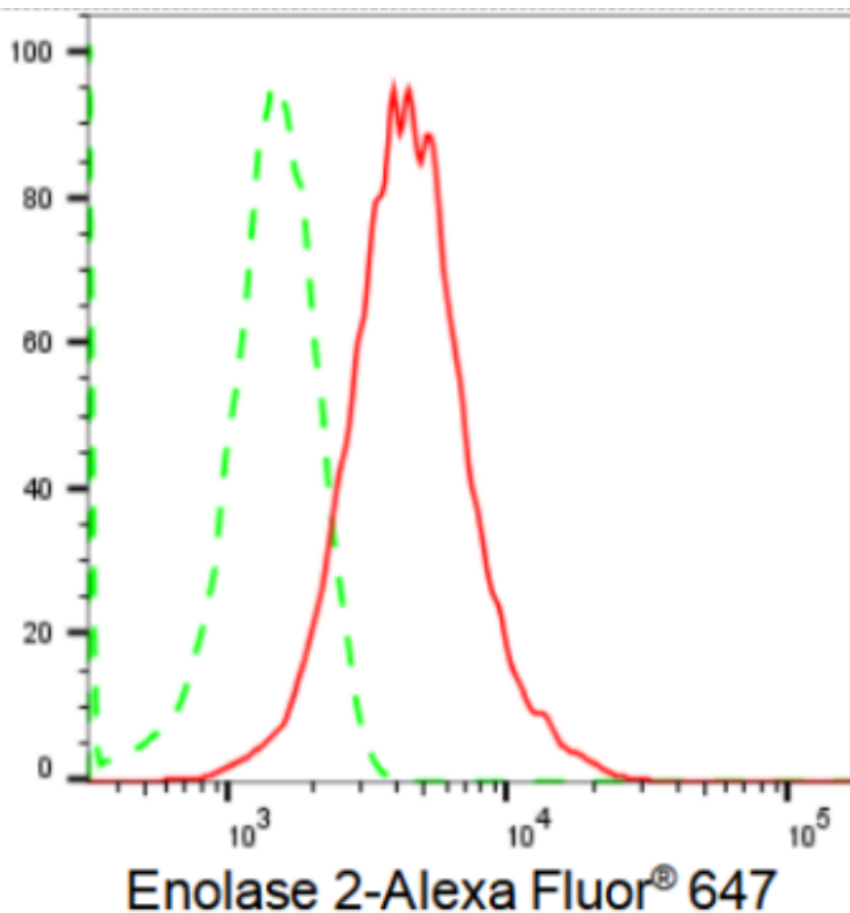
[WWW.GENUINBIOTECH.COM](http://WWW.GENUINBIOTECH.COM)

# Anti-Enolase 2 Recombinant Rabbit Monoclonal Antibody

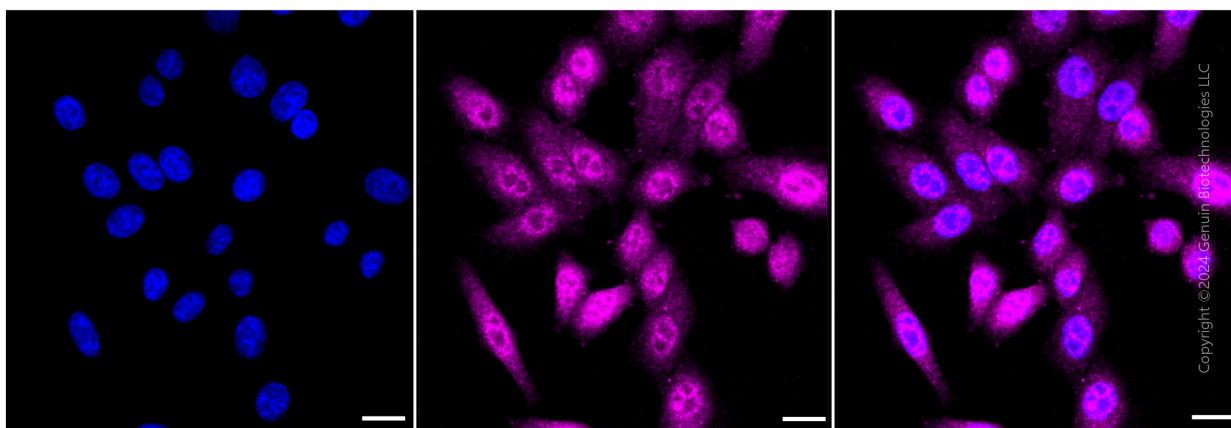
PAGE 2

**Note:** This product is for research use only.

## Validation Data



Flow cytometric analysis of Enolase 2 expression in HepG2 cells using Enolase 2 antibody (Cat#2552, 1:2,000). Green, isotype control; red, Enolase 2.



Immunocytochemical staining of HepG2 cells with Enolase 2 antibody (Cat#2552, 1:1,000). Nuclei were stained blue with DAPI; Enolase 2 was stained magenta with Alexa Fluor® 647.

### SUPPORT

SUPPORT@GENUINBIOTECH.COM  
TEL: +1-540-855-7041

### ORDERS

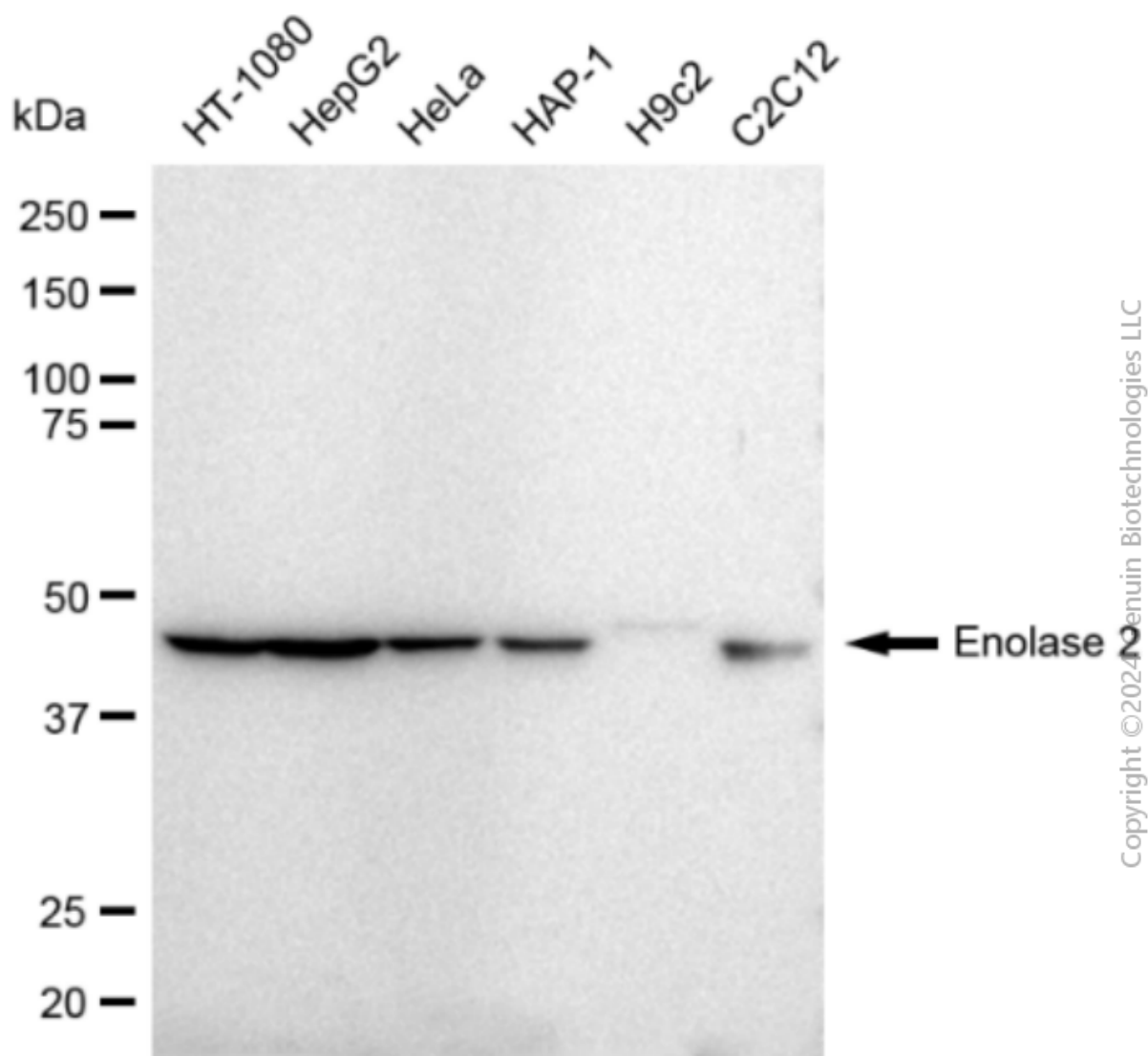
SALES@GENUINBIOTECH.COM  
FAX: +1-540-855-7041

WWW.GENUINBIOTECH.COM

## Anti-Enolase 2 Recombinant Rabbit Monoclonal Antibody

PAGE 3

Images were taken using Leica stellaris 5. Protein abundance based on laser Intensity and smart gain: Medium. Scale bar: 20  $\mu$ m.



Western blotting analysis using anti-Enolase 2 antibody (Cat#2552). Total cell lysates (30  $\mu$ g) from various cell lines were loaded and separated by SDS-PAGE. The blot was incubated with anti-Enolase 2 antibody (Cat#2552, 1:10,000) and HRP-conjugated goat anti-rabbit secondary antibody (Cat#201, 1:20,000) respectively. Image was developed using FeQ™ ECL Substrate Kit (Cat#226).

### SUPPORT

SUPPORT@GENUINBIOTECH.COM  
TEL: +1-540-855-7041

### ORDERS

SALES@GENUINBIOTECH.COM  
FAX: +1-540-855-7041

WWW.GENUINBIOTECH.COM