

Anti-Phospho-LAT (Y220) Recombinant Rabbit Monoclonal Antibody



Catalog #: 2553

Aliases

LAT; Linker For Activation Of T Cells; LAT1; Linker For Activation Of T Cells, Transmembrane Adaptor; Linker For Activation Of T-Cells Family Member 1; 36 KDa Phosphotyrosine Adapter Protein; P36-38; Pp36; 36 KDa Phospho-Tyrosine Adapter Protein; 36 KDa Phospho-Tyrosine Adaptor Protein; IMD52

Background

Gene Name: PRKAR2A

NCBI Gene Entry: [27040](#)

UniProt Entry: [O43561](#)

Application Information

Molecular Weight: Predicted, 28 kDa; observed, 36 kDa

Clonality: Rabbit monoclonal antibody

Clone ID: 24GB1375

Species Reactivity: Human, mouse, rat

Applications Tested: Western blotting (WB), immunocytochemistry (IC)

Immunogen

A synthesized peptide derived from human Phospho-LAT (Y220)

Isotype

Rabbit IgG

Storage Buffer

Supplied in PBS (pH 7.4) containing 50% glycerol, and 0.02% sodium azide.

Storage

Store at -20 °C for one year.

Recommended Dilutions

Western Blotting (WB): 1:1,000-1:5,000

Immunocytochemistry (IC): 1:100-1:1,000

Note: This product is for research use only.

SUPPORT

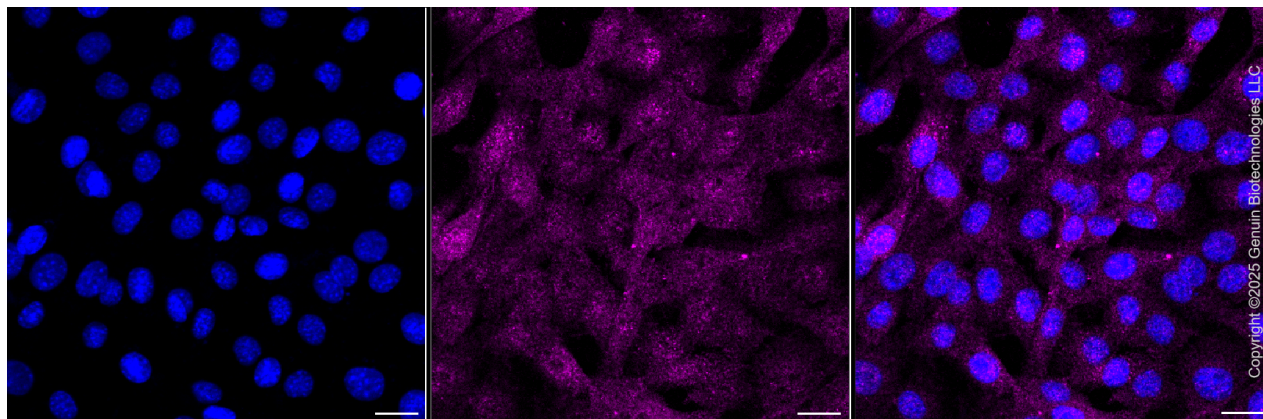
SUPPORT@GENUINBIOTECH.COM
TEL: +1-540-855-7041

ORDERS

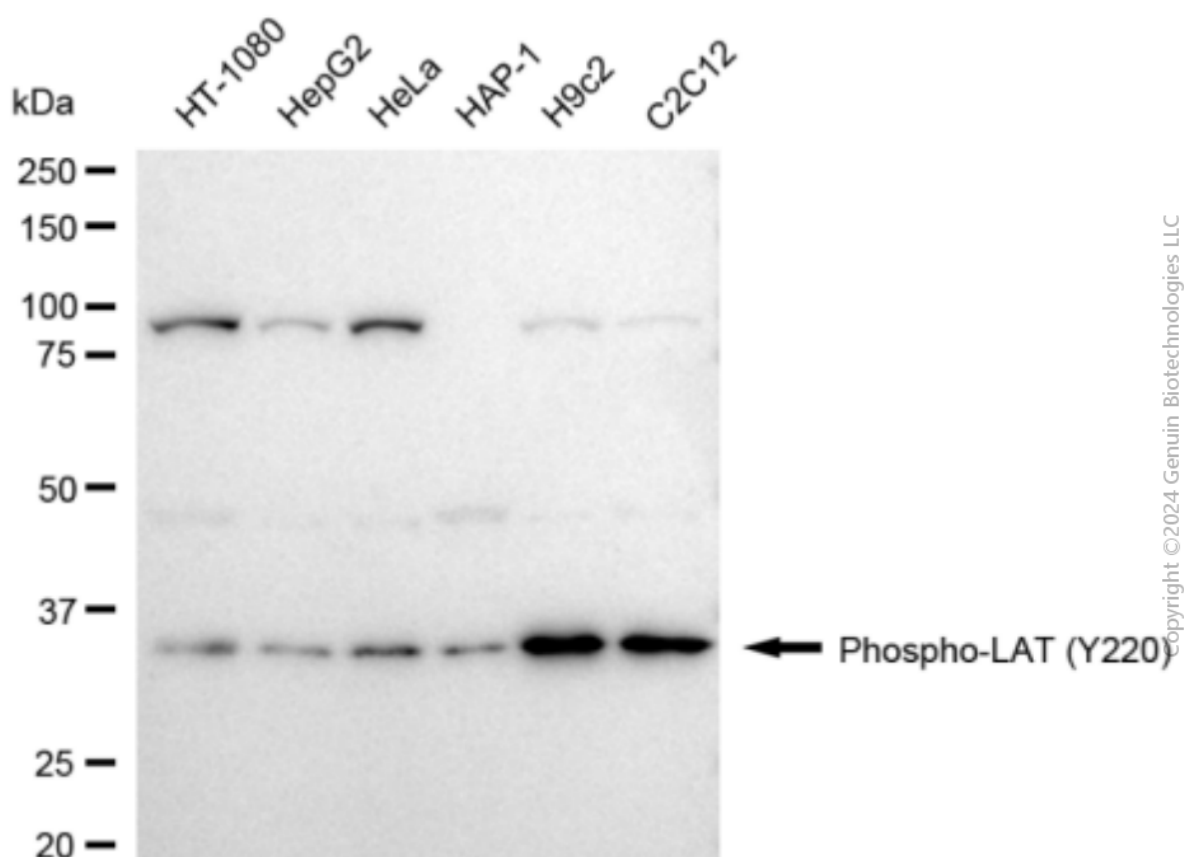
SALES@GENUINBIOTECH.COM
FAX: +1-540-855-7041

WWW.GENUINBIOTECH.COM

Validation Data



Immunocytochemical staining of C2C12 cells with anti-Phospho-LAT (Y191) antibody (Cat#2553, 1:1,000) . Nuclei were stained blue with DAPI; Phospho-LAT (Y191) was stained magenta with Alexa Fluor® 647. Images were taken using Leica stellaris 5. Protein abundance based on laser Intensity and Smart Gain□Medium. Scale bar, 20 μ m.



Western blotting analysis using anti-phospho-LAT (Y220) antibody (Cat#2553). Total cell lysates (30 μ g) from various cell lines were loaded and separated by SDS-PAGE. The blot was incubated with anti-phospho-LAT (Y220) antibody (Cat#2553, 1:5,000) and HRP-conjugated goat anti-

SUPPORT

SUPPORT@GENUINBIOTECH.COM
TEL: +1-540-855-7041

ORDERS

SALES@GENUINBIOTECH.COM
FAX: +1-540-855-7041

WWW.GENUINBIOTECH.COM

Anti-Phospho-LAT (Y220) Recombinant Rabbit Monoclonal Antibody

PAGE 3

rabbit secondary antibody (Cat#201, 1:20,000) respectively. Image was developed using FeQ™ ECL Substrate Kit (Cat#226).

SUPPORT

SUPPORT@GENUINBIOTECH.COM
TEL: +1-540-855-7041

ORDERS

SALES@GENUINBIOTECH.COM
FAX: +1-540-855-7041

WWW.GENUINBIOTECH.COM