

Anti-PPP1CA + 1CB Recombinant Rabbit Monoclonal Antibody



Catalog #: 2555

Aliases

PPP1CA; Protein Phosphatase 1 Catalytic Subunit Alpha; PP-1A; PP1alpha; PPP1A; PP1A; Serine/Threonine-Protein Phosphatase PP1-Alpha Catalytic Subunit; Protein Phosphatase 1, Catalytic Subunit, Alpha Isozyme; EC 3.1.3.16; Serine/Threonine Protein Phosphatase PP1-Alpha 1 Catalytic Subunit; Protein Phosphatase 1, Catalytic Subunit, Alpha Isoform; Testicular Tissue Protein Li 155

Background

Gene Name: PPP1CA/ PPP1CB

NCBI Gene Entry: [5499/5500](#)

UniProt Entry: [P62136/P62140](#)

Application Information

Molecular Weight: Predicted, 37 kDa; observed, 35 kDa

Clonality: Rabbit monoclonal antibody

Clone ID: 24GB1385

Species Reactivity: Human, mouse, rat

Applications Tested: Western blotting (WB), flow cytometry (FCM), immunocytochemistry (IC)

Immunogen

A synthesized peptide derived from human PPP1CA + 1CB

Isotype

Rabbit IgG

Storage Buffer

Supplied in PBS (pH 7.4) containing 50% glycerol, and 0.02% sodium azide.

Storage

Store at -20 °C for one year.

Recommended Dilutions

Western Blotting (WB): 1:1,000-1:5,000

Flow Cytometry (FCM): 1:2,000

Immunocytochemistry (IC): 1:100-1:1,000

SUPPORT

SUPPORT@GENUINBIOTECH.COM
TEL: +1-540-855-7041

ORDERS

SALES@GENUINBIOTECH.COM
FAX: +1-540-855-7041

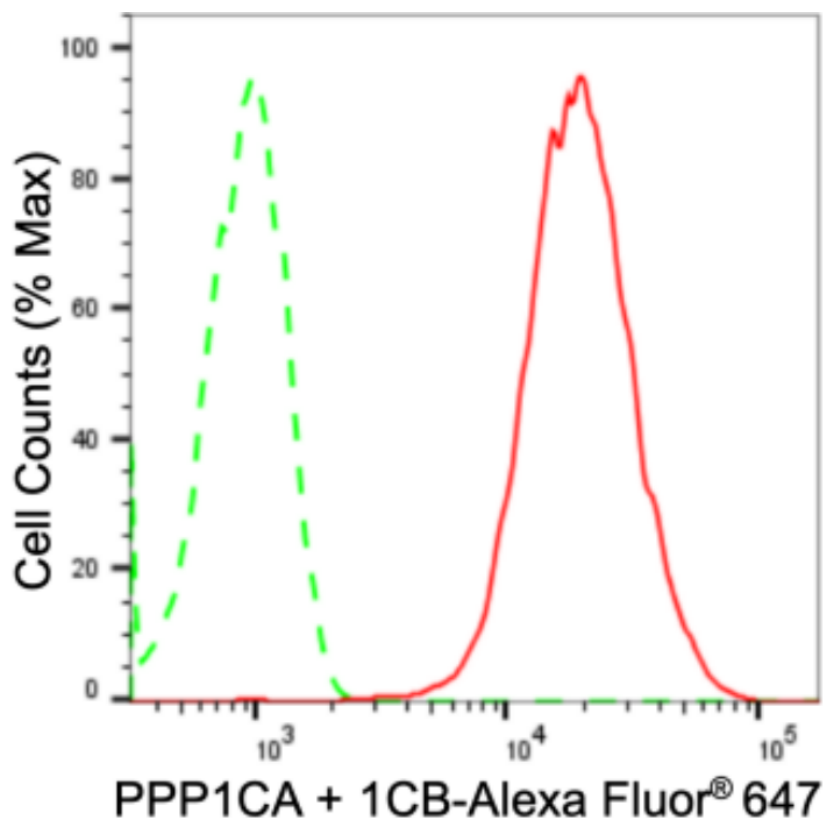
WWW.GENUINBIOTECH.COM

Anti-PPP1CA + 1CB Recombinant Rabbit Monoclonal Antibody

PAGE 2

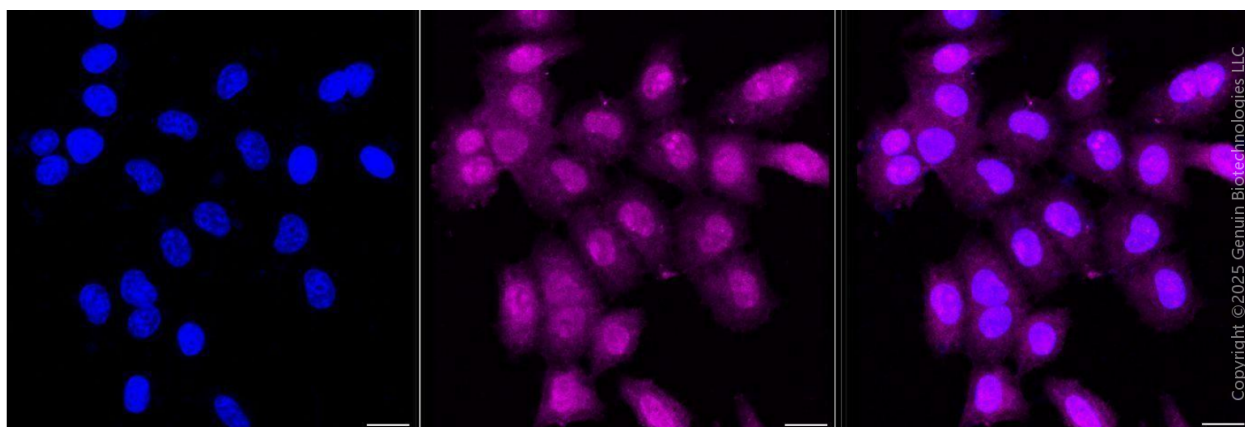
Note: This product is for research use only.

Validation Data



Copyright ©2024 Genuin Biotechnologies LLC

Flow cytometric analysis of PPP1CA + 1CB expression in HepG2 cells using anti-PPP1CA + 1CB antibody (Cat#2555, 1:2,000). Green, isotype control; red, PPP1CA + 1CB.



Copyright ©2025 Genuin Biotechnologies LLC

Immunocytochemical staining of HepG2 cells with anti-PPP1CA + 1CB antibody (Cat#2555, 1:1,000) . Nuclei were stained blue with DAPI; PPP1CA + 1CB was stained magenta with Alexa Fluor® 647. Images were taken using Leica stellaris 5. Protein abundance based on laser Intensity and smart gain: Medium. Scale bar, 20 μm.

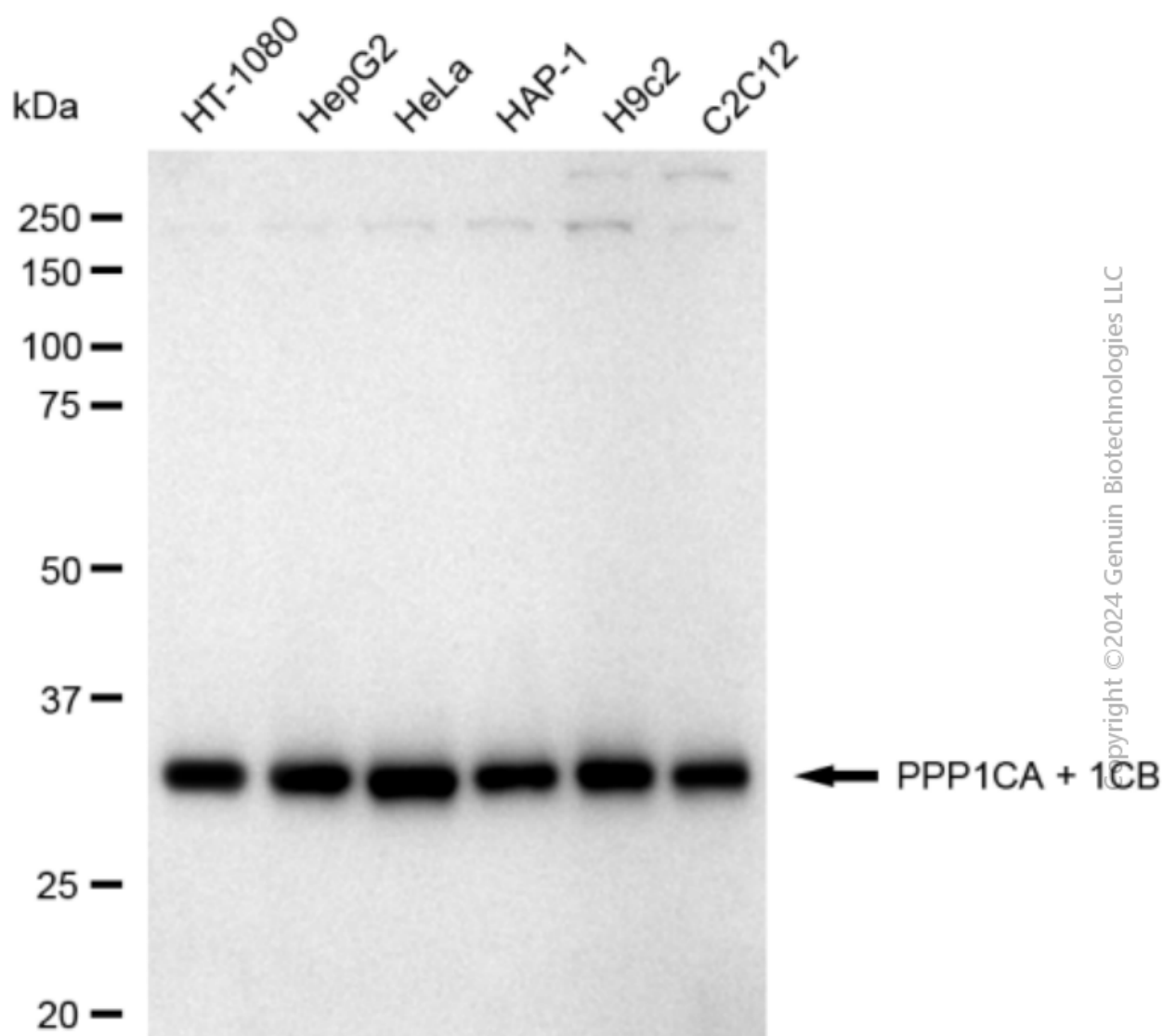
SUPPORT

SUPPORT@GENUINBIOTECH.COM
TEL: +1-540-855-7041

ORDERS

SALES@GENUINBIOTECH.COM
FAX: +1-540-855-7041

WWW.GENUINBIOTECH.COM



Western blotting analysis using anti-PPP1CA + 1CB antibody (Cat#2555). Total cell lysates (10 µg) from various cell lines were loaded and separated by SDS-PAGE. The blot was incubated with anti-PPP1CA + 1CB antibody (Cat#2555, 1:5,000) and HRP-conjugated goat anti-rabbit secondary antibody (Cat#201, 1:20,000) respectively. Image was developed using FeQ™ ECL Substrate Kit (Cat#226).