

# Anti-PSMC4 Recombinant Rabbit Monoclonal Antibody



**Catalog #: 2559**

## Aliases

PSMC4; Proteasome 26S Subunit, ATPase 4; TBP-7; TBP7; Tat-Binding Protein 7; MIP224; RPT3; S6; Proteasome (Prosome, Macropain) 26S Subunit, ATPase, 4; 26S Proteasome AAA-ATPase Subunit RPT3; 26S Proteasome Regulatory Subunit 6B; MB67-Interacting Protein; Protease 26S Subunit 6; MGC13687; MGC23214; MGC8570; 26S Protease Regulatory Subunit 6B; Proteasome 26S Subunit ATPase 4; MB67 Interacting Protein

## Background

Gene Name: PSMC4

NCBI Gene Entry: [5704](#)

UniProt Entry: [P43686](#)

## Application Information

Molecular Weight: Predicted, 47 kDa; observed, 47 kDa

Clonality: Rabbit monoclonal antibody

Clone ID: 24GB1400

Species Reactivity: Human, mouse, rat

Applications Tested: Western blotting (WB), flow cytometry (FCM), immunocytochemistry (IC)

## Immunogen

A synthesized peptide derived from human Tbp7

## Isotype

Rabbit IgG

## Storage Buffer

Supplied in PBS (pH 7.4) containing 50% glycerol, and 0.02% sodium azide.

## Storage

Store at -20 °C for one year.

## Recommended Dilutions

Western Blotting (WB): 1:1,000-1:5,000

Flow Cytometry (FCM): 1:2,000

Immunocytochemistry (IC): 1:100-1:1,000

---

### SUPPORT

SUPPORT@GENUINBIOTECH.COM  
TEL: +1-540-855-7041

### ORDERS

SALES@GENUINBIOTECH.COM  
FAX: +1-540-855-7041

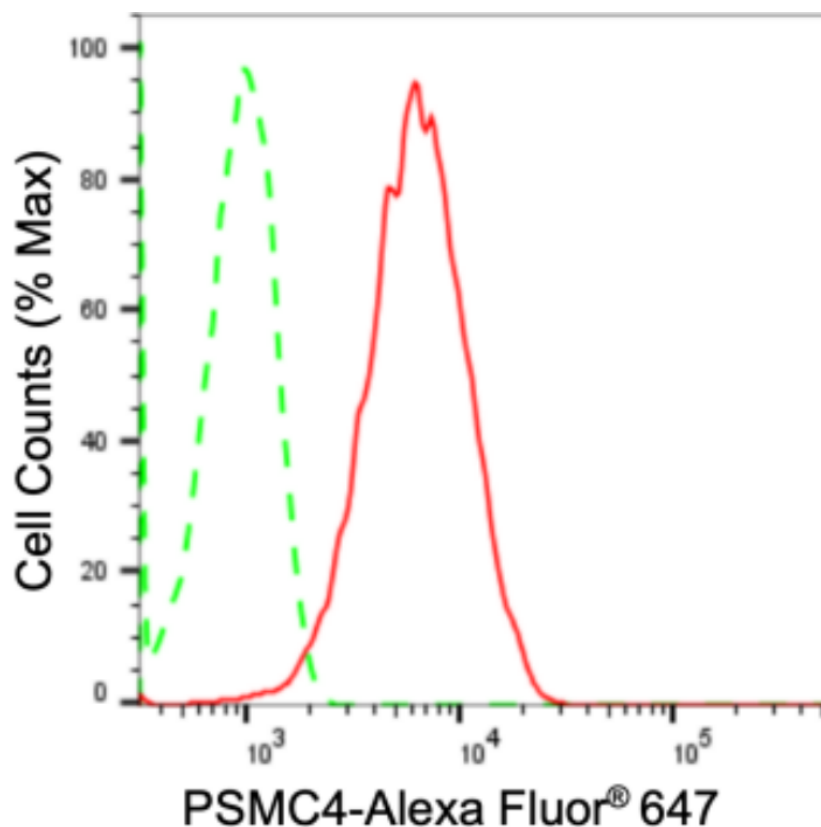
[WWW.GENUINBIOTECH.COM](http://WWW.GENUINBIOTECH.COM)

# Anti-PSMC4 Recombinant Rabbit Monoclonal Antibody

PAGE 2

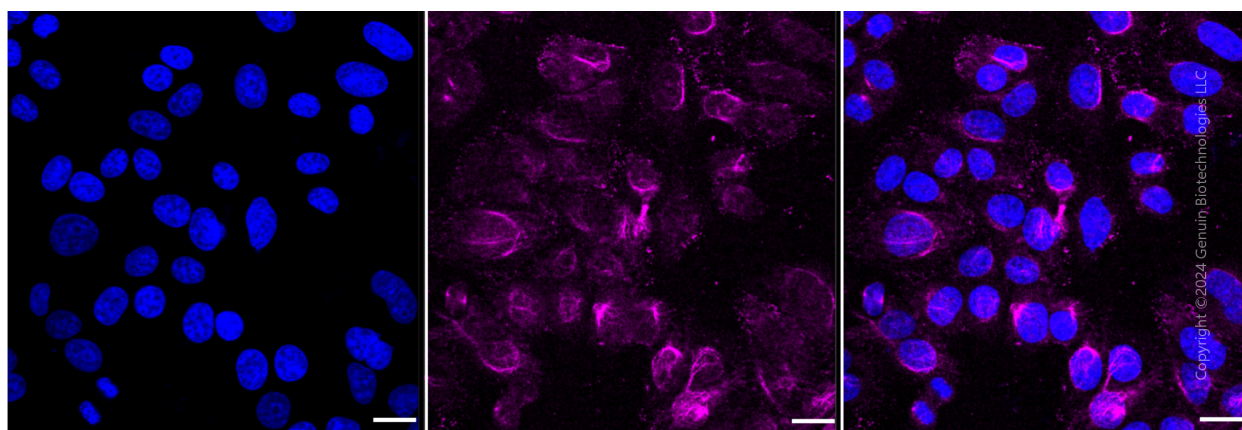
**Note:** This product is for research use only.

## Validation Data



Copyright ©2024 Genuin Biotechnologies LLC

Flow cytometric analysis of PSMC4 expression in HepG2 cells using anti-PSMC4 antibody (Cat#2559, 1:2,000). Green, isotype control; red, PSMC4.



Copyright ©2024 Genuin Biotechnologies LLC

Immunocytochemical staining of HepG2 cells with anti-PSMC4 antibody (Cat#2559, 1:1,000). Nuclei were stained blue with DAPI; PSMC4 was stained magenta with Alexa Fluor® 647. Images were taken using Leica stellaris 5. Protein abundance based on laser Intensity and smart gain: Medium. Scale bar: 20 µm.

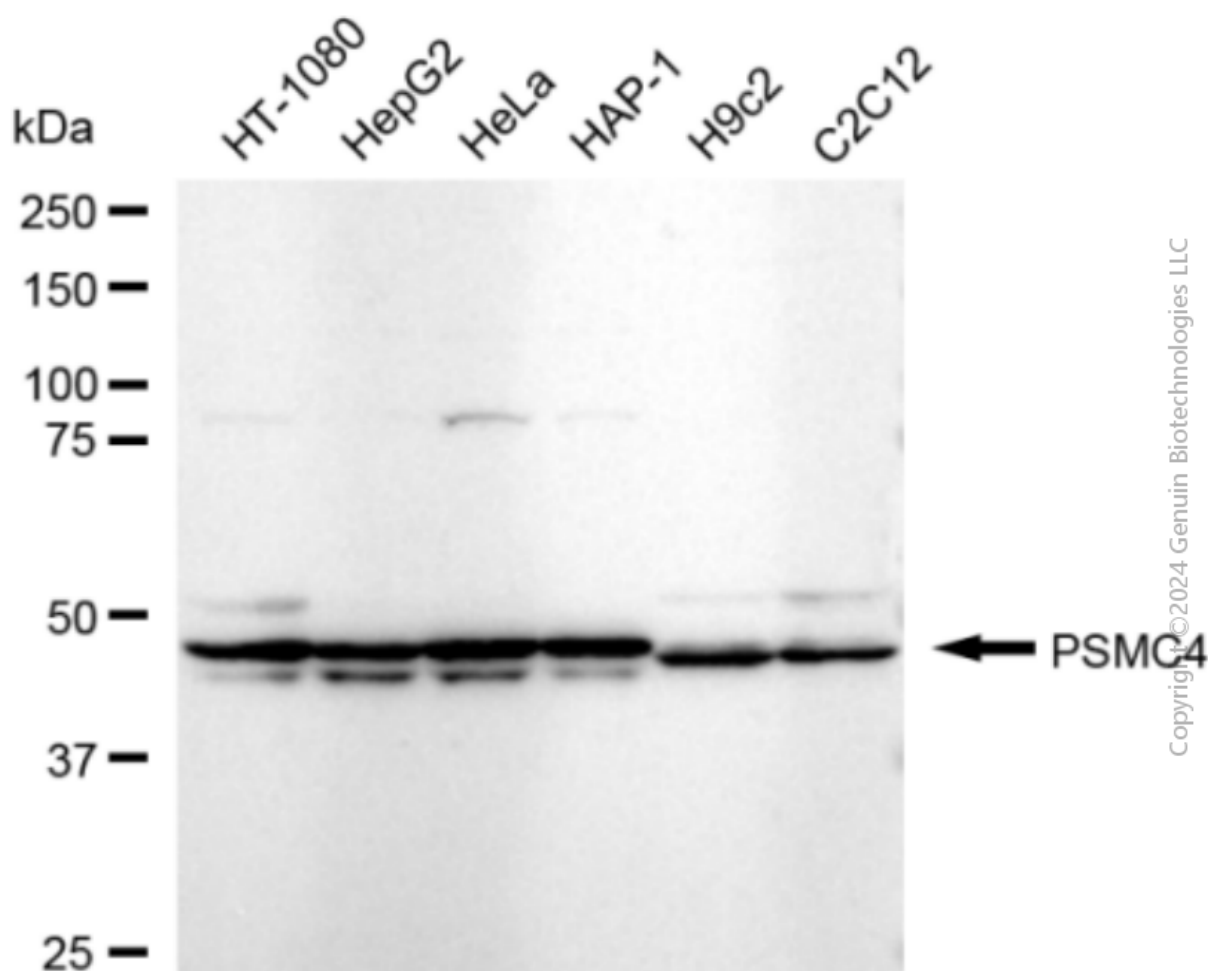
### SUPPORT

SUPPORT@GENUINBIOTECH.COM  
TEL: +1-540-855-7041

### ORDERS

SALES@GENUINBIOTECH.COM  
FAX: +1-540-855-7041

WWW.GENUINBIOTECH.COM



Western blotting analysis using anti-PSMC4 antibody (Cat#2559). Total cell lysates (30  $\mu$ g) from various cell lines were loaded and separated by SDS-PAGE. The blot was incubated with anti-PSMC4 antibody (Cat#2559, 1:5,000) and HRP-conjugated goat anti-rabbit secondary antibody (Cat#201, 1:20,000) respectively. Image was developed using FeQ™ ECL Substrate Kit (Cat#226).