

Anti-RPS3 Recombinant Rabbit Monoclonal Antibody



Catalog #: 2560

Aliases

RPS3; Ribosomal Protein S3; 40S Ribosomal Protein S3; S3; Small Ribosomal Subunit Protein US3; IMR-90 Ribosomal Protein S3; FLJ26283; FLJ27450; MGC87870; US3; EC 4.2.99.18

Background

Gene Name: RPS3

NCBI Gene Entry: [6188](#)

UniProt Entry: [P23396](#)

Application Information

Molecular Weight: Predicted, 27,29 kDa; observed, 27,31 kDa

Clonality: Rabbit monoclonal antibody

Clone ID: 24GB1405

Species Reactivity: Human, mouse, rat

Applications Tested: Western blotting (WB)

Immunogen

A synthesized peptide derived from human RPS3

Isotype

Rabbit IgG

Storage Buffer

Supplied in PBS (pH 7.4) containing 50% glycerol, and 0.02% sodium azide.

Storage

Store at -20 °C for one year.

Recommended Dilutions

Western Blotting (WB): 1:1,000-1:5,000

Note: This product is for research use only.

Validation Data

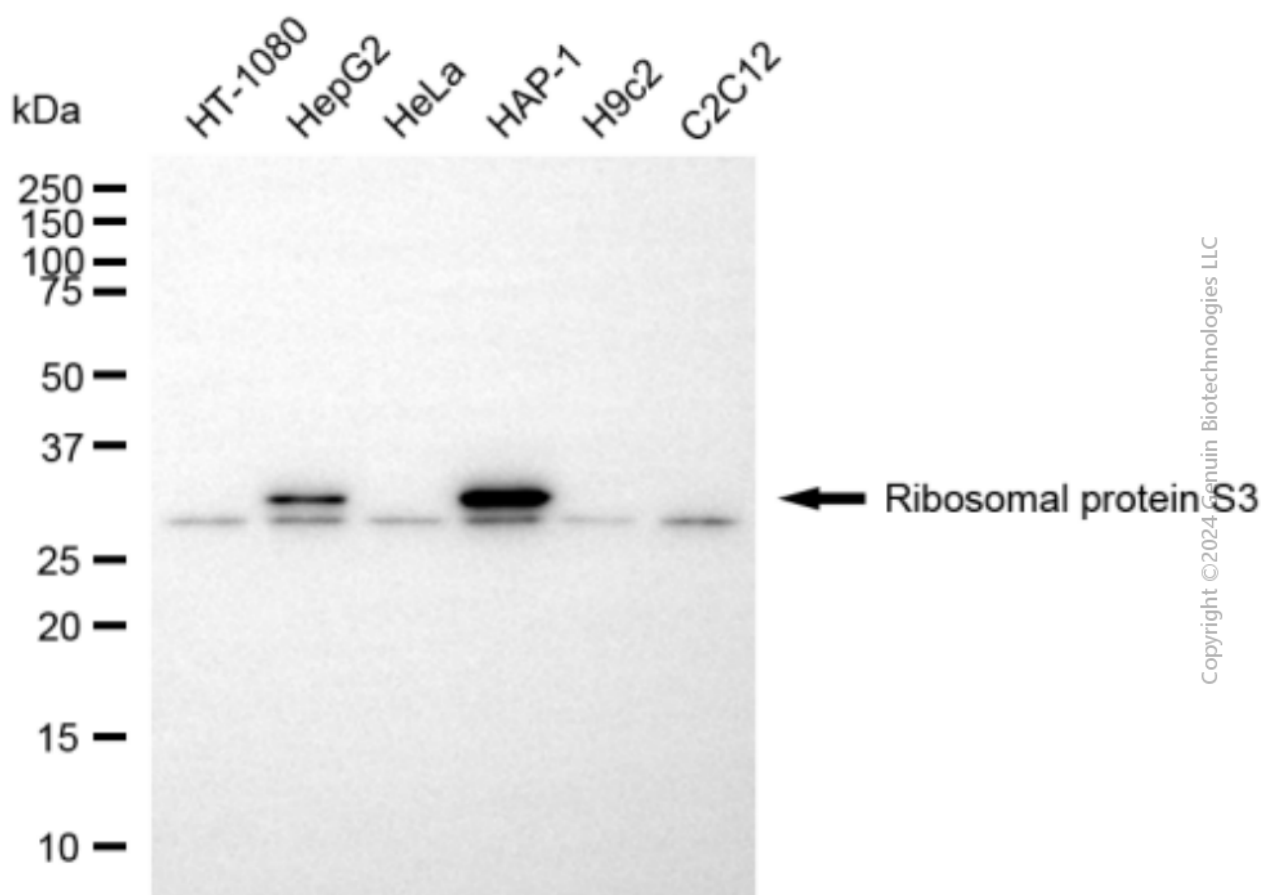
SUPPORT

SUPPORT@GENUINBIOTECH.COM
TEL: +1-540-855-7041

ORDERS

SALES@GENUINBIOTECH.COM
FAX: +1-540-855-7041

WWW.GENUINBIOTECH.COM



Western blotting analysis using anti-Ribosomal protein S3 antibody (Cat#2560). Total cell lysates (30 μ g) from various cell lines were loaded and separated by SDS-PAGE. The blot was incubated with anti-Ribosomal protein S3 antibody (Cat#2560, 1:5,000) and HRP-conjugated goat anti-rabbit secondary antibody (Cat#201, 1:20,000) respectively. Image was developed using NaQTM ECL Substrate Kit (Cat#716).