

# Anti-Fragile X messenger ribonucleoprotein 1 Recombinant Rabbit Monoclonal Antibody



**Catalog #: 2561**

## Aliases

FMR1; Fragile X Messenger Ribonucleoprotein 1; FMRP; FRAXA; FMRP Translational Regulator 1; MGC87458; POF1; POF; Fragile X Messenger Ribonucleoprotein; Synaptic Functional Regulator FMR1; Fragile X Mental Retardation 1; Premature Ovarian Failure 1; Protein FMR-1

## Background

Gene Name: FMR1

NCBI Gene Entry: [2332](#)

UniProt Entry: [Q06787](#)

## Application Information

Molecular Weight: Predicted, 71 kDa; observed, 71 kDa

Clonality: Rabbit monoclonal antibody

Clone ID: 23GB1715

Species Reactivity: Human, mouse, rat

Applications Tested: Western blotting (WB), flow cytometry (FCM), immunocytochemistry (IC)

## Immunogen

A synthesized peptide derived from human FMRP

## Isotype

Rabbit IgG

## Storage Buffer

Supplied in PBS (pH 7.4) containing 50% glycerol, and 0.02% sodium azide.

## Storage

Store at -20 °C for one year.

## Recommended Dilutions

Western Blotting (WB): 1:1,000-1:5,000

Flow Cytometry (FCM): 1:2,000

Immunocytochemistry (IC): 1:100-1:1,000

---

### SUPPORT

SUPPORT@GENUINBIOTECH.COM  
TEL: +1-540-855-7041

### ORDERS

SALES@GENUINBIOTECH.COM  
FAX: +1-540-855-7041

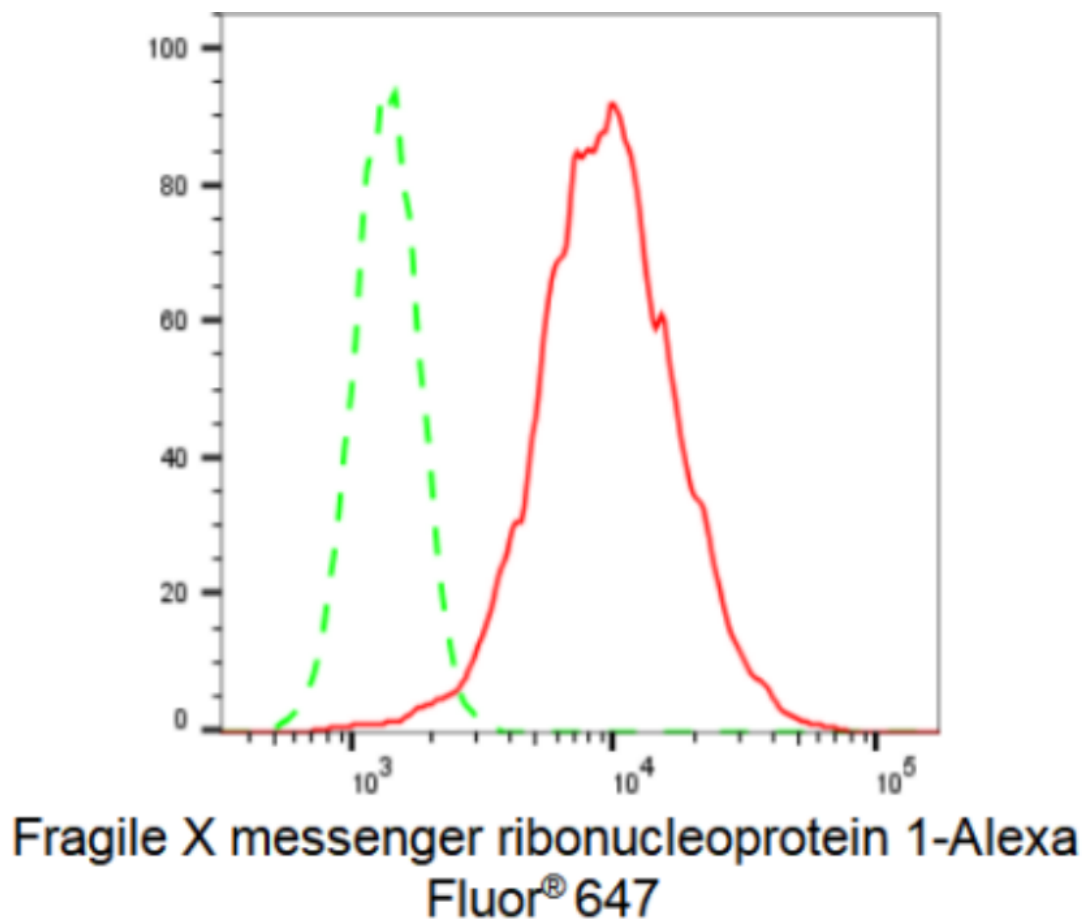
[WWW.GENUINBIOTECH.COM](http://WWW.GENUINBIOTECH.COM)

# Anti-Fragile X messenger ribonucleoprotein 1 Recombinant Rabbit Monoclonal Antibody

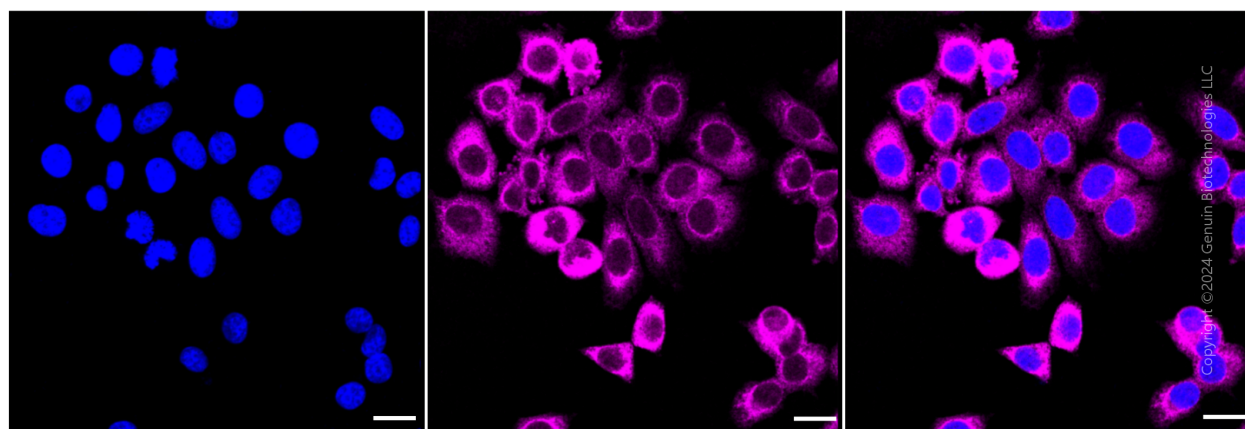
PAGE 2

**Note:** This product is for research use only.

## Validation Data



Copyright ©2024 Genuin Biotechnologies LLC



Copyright ©2024 Genuin Biotechnologies LLC

### SUPPORT

SUPPORT@GENUINBIOTECH.COM  
TEL: +1-540-855-7041

### ORDERS

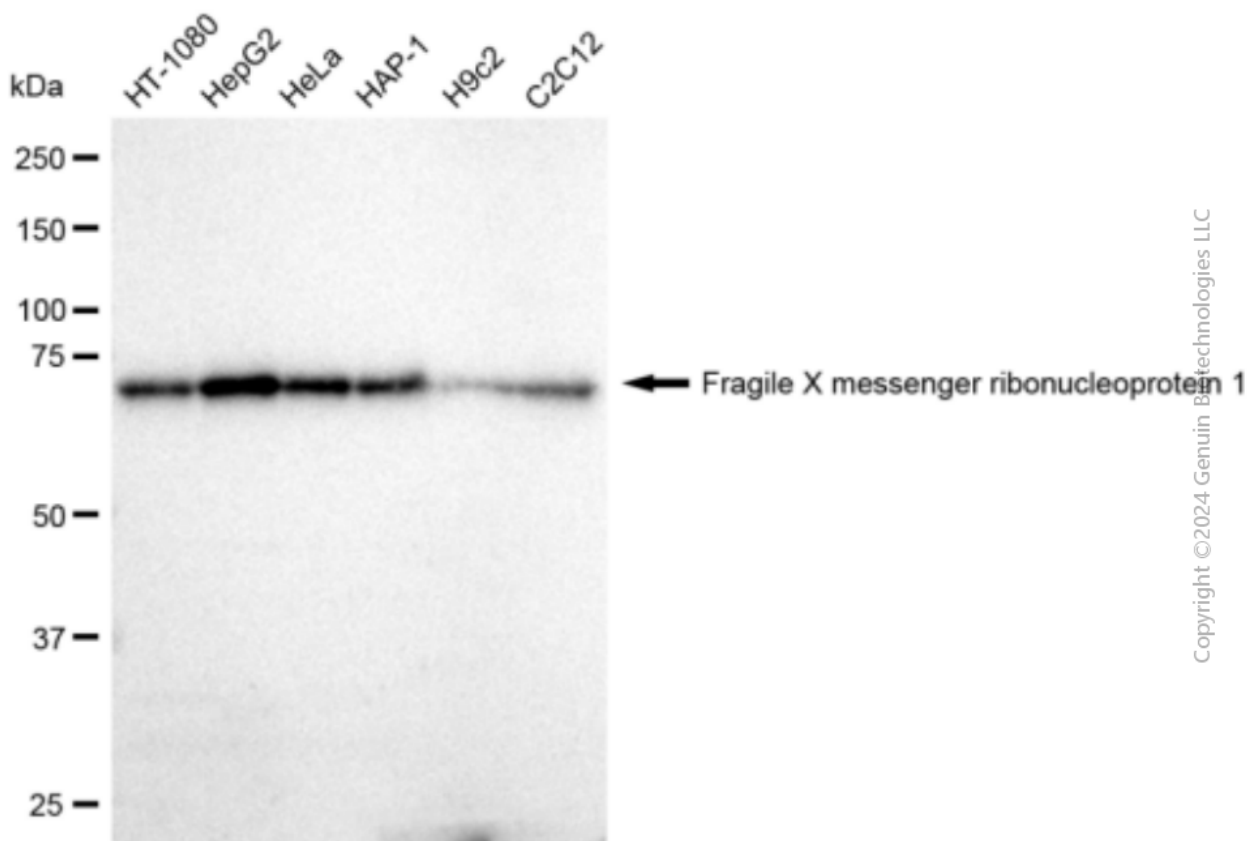
SALES@GENUINBIOTECH.COM  
FAX: +1-540-855-7041

WWW.GENUINBIOTECH.COM

## Anti-Fragile X messenger ribonucleoprotein 1 Recombinant Rabbit Monoclonal Antibody

PAGE 3

ribonucleoprotein 1 was stained magenta with Alexa Fluor® 647. Images were taken using Leica stellaris 5. Protein abundance based on laser Intensity and smart gain: High. Scale bar: 20 µm.



Western blotting analysis using anti-Fragile X messenger ribonucleoprotein 1 antibody (Cat#2561). Total cell lysates (30 µg) from various cell lines were loaded and separated by SDS-PAGE. The blot was incubated with anti-Fragile X messenger ribonucleoprotein 1 antibody (Cat#2561, 1:5,000) and HRP-conjugated goat anti-rabbit secondary antibody (Cat#201, 1:20,000) respectively. Image was developed using FeQ™ ECL Substrate Kit (Cat#226).

### SUPPORT

SUPPORT@GENUINBIOTECH.COM  
TEL: +1-540-855-7041

### ORDERS

SALES@GENUINBIOTECH.COM  
FAX: +1-540-855-7041

WWW.GENUINBIOTECH.COM