

Anti-PIM1 Recombinant Rabbit Monoclonal Antibody



Catalog #: 2562

Aliases

PIM1; Pim-1 Proto-Oncogene, Serine/Threonine Kinase; Serine/Threonine-Protein Kinase Pim-1; EC 2.7.11.1; PIM; Proto-Oncogene Serine/Threonine-Protein Kinase Pim-1; Pim-1 Oncogene (Proviral Integration Site 1); Pim-1 Oncogene; Oncogene PIM1

Background

Gene Name: PIM1

NCBI Gene Entry: [5292](#)

UniProt Entry: [P11309](#)

Application Information

Molecular Weight: Predicted, 36 kDa; observed, 32 kDa

Clonality: Rabbit monoclonal antibody

Clone ID: 24GB1410

Species Reactivity: Human, mouse, rat

Applications Tested: Western blotting (WB), flow cytometry (FCM), immunocytochemistry (IC)

Immunogen

A synthesized peptide derived from human PIM1

Isotype

Rabbit IgG

Storage Buffer

Supplied in PBS (pH 7.4) containing 50% glycerol, and 0.02% sodium azide.

Storage

Store at -20 °C for one year.

Recommended Dilutions

Western Blotting (WB): 1:2,000-1:10,000

Flow Cytometry (FCM): 1:2,000

Immunocytochemistry (IC): 1:100-1:1,000

Note: This product is for research use only.

SUPPORT

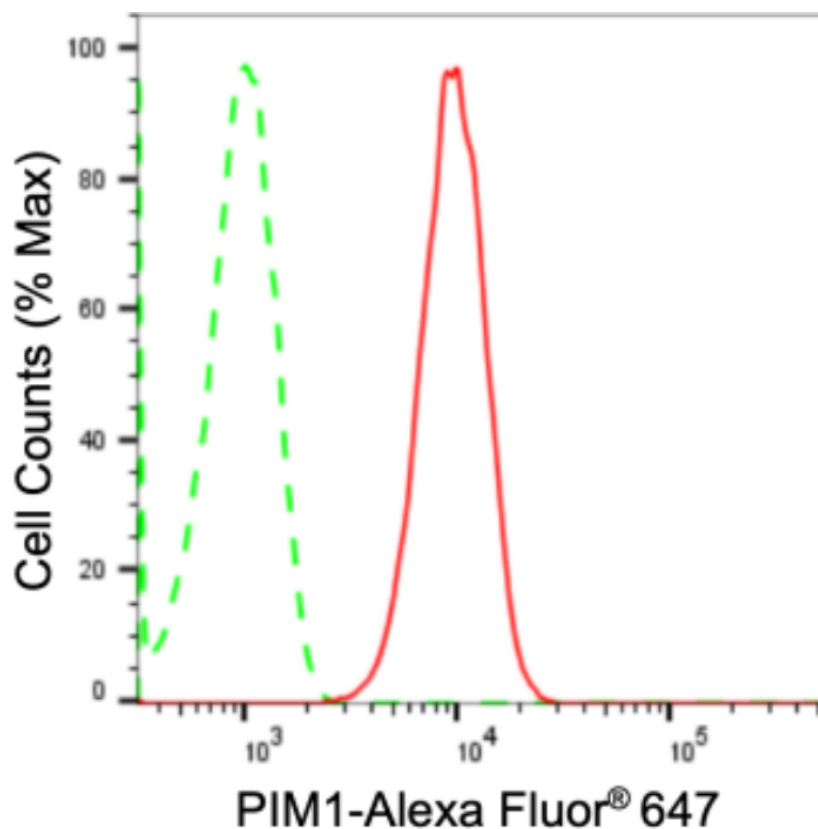
SUPPORT@GENUINBIOTECH.COM
TEL: +1-540-855-7041

ORDERS

SALES@GENUINBIOTECH.COM
FAX: +1-540-855-7041

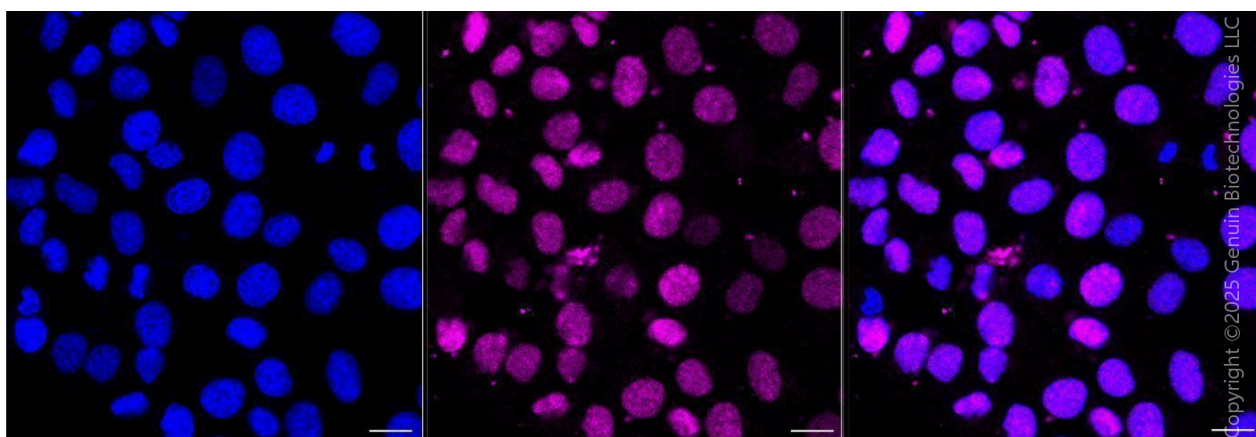
WWW.GENUINBIOTECH.COM

Validation Data



Copyright ©2024 Genuin Biotechnologies LLC

Flow cytometric analysis of PIM1 expression in HT-1080 cells using anti-PIM1 antibody (Cat#2562, 1:2,000). Green, isotype control; red, PIM1.



Copyright ©2025 Genuin Biotechnologies LLC

Immunocytochemical staining of HT-1080 cells with anti-PIM1 antibody (Cat#2562, 1:1,000). Nuclei were stained blue with DAPI; PIM1 was stained magenta with Alexa Fluor® 647. Images were taken using Leica stellaris 5. Protein abundance based on laser Intensity and smart gain: Medium. Scale bar, 20 μm.

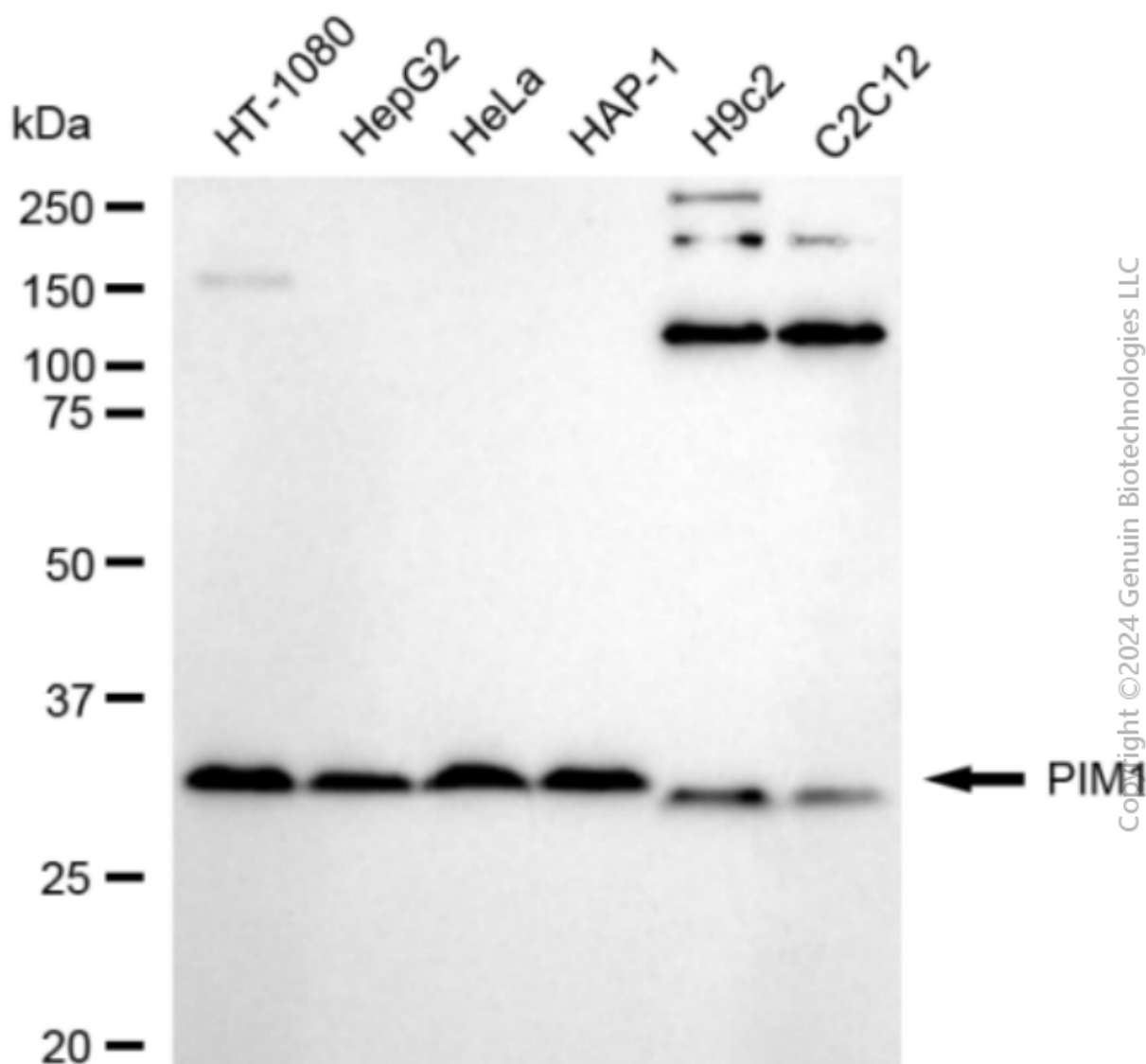
SUPPORT

SUPPORT@GENUINBIOTECH.COM
TEL: +1-540-855-7041

ORDERS

SALES@GENUINBIOTECH.COM
FAX: +1-540-855-7041

WWW.GENUINBIOTECH.COM



Western blotting analysis using anti-PIM1 antibody (Cat#2562). Total cell lysates (30 μ g) from various cell lines were loaded and separated by SDS-PAGE. The blot was incubated with anti-PIM1 antibody (Cat#2562, 1:10,000) and HRP-conjugated goat anti-rabbit secondary antibody (Cat#201, 1:20,000) respectively. Image was developed using FeQ™ ECL Substrate Kit (Cat#226).