

Anti-Sphingosine-1-Phosphate Receptor 1 Recombinant Rabbit Monoclonal Antibody



Catalog #: 2567

Aliases

S1PR1; Sphingosine-1-Phosphate Receptor 1; D1S3362; Edg-1; CD363; EDG1; Endothelial Differentiation, Sphingolipid G-Protein-Coupled Receptor, 1; Endothelial Differentiation G-Protein Coupled Receptor 1 ; Sphingosine 1-Phosphate Receptor Edg-1; Sphingosine 1-Phosphate Receptor 1; S1P Receptor Edg-1; S1P Receptor 1; CHEDG1; S1P1; Sphingosine 1-Phosphate Receptor EDG1; CD363 Antigen; ECGF1

Background

Gene Name: S1PR1

NCBI Gene Entry: [1901](#)

UniProt Entry: [P21453](#)

Application Information

Molecular Weight: Predicted, 43 kDa; observed, 43 kDa

Clonality: Rabbit monoclonal antibody

Clone ID: 24GB1435

Species Reactivity: Human, mouse, rat

Applications Tested: Western blotting (WB), flow cytometry (FCM), immunocytochemistry (IC)

Immunogen

A synthesized peptide derived from human EDG1

Isotype

Rabbit IgG

Storage Buffer

Supplied in PBS (pH 7.4) containing 50% glycerol, and 0.02% sodium azide.

Storage

Store at -20 °C for one year.

Recommended Dilutions

Western Blotting (WB): 1:1,000-1:5,000

Flow Cytometry (FCM): 1:2,000

Immunocytochemistry (IC): 1:100-1:1,000

SUPPORT

SUPPORT@GENUINBIOTECH.COM
TEL: +1-540-855-7041

ORDERS

SALES@GENUINBIOTECH.COM
FAX: +1-540-855-7041

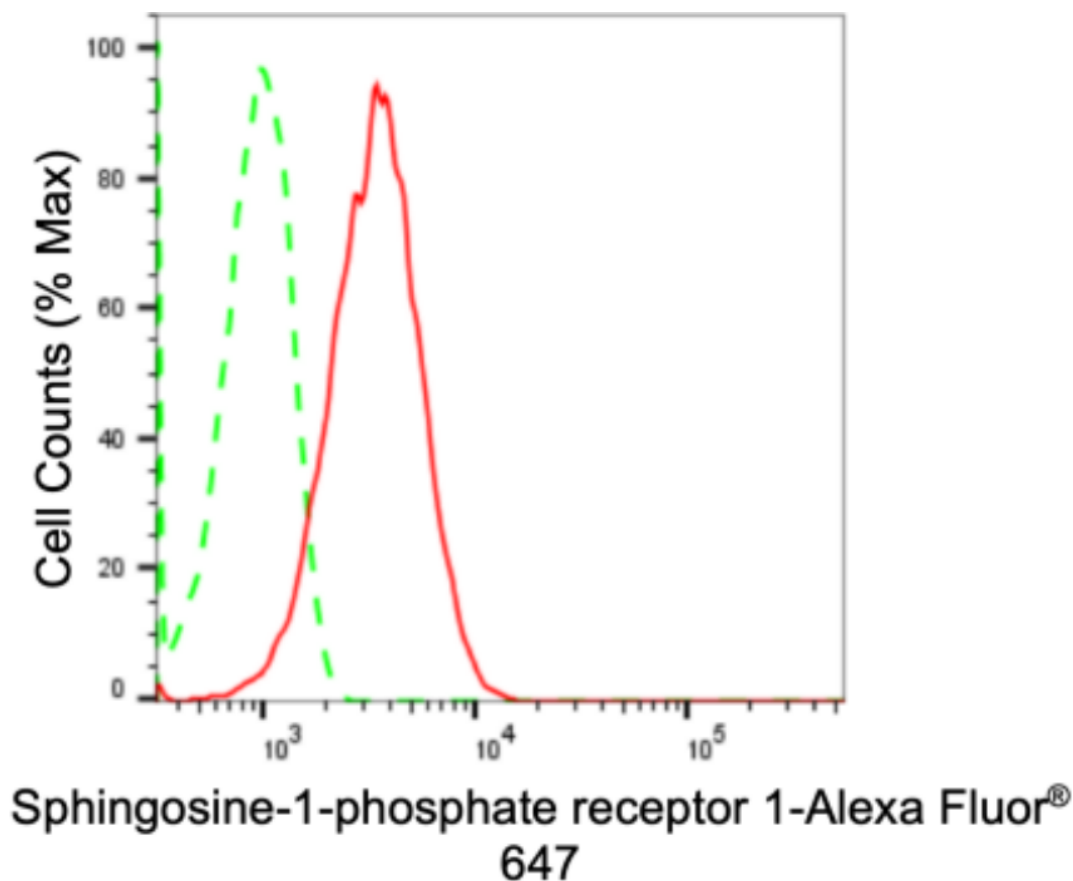
WWW.GENUINBIOTECH.COM

Anti-Sphingosine-1-Phosphate Receptor 1 Recombinant Rabbit Monoclonal Antibody

PAGE 2

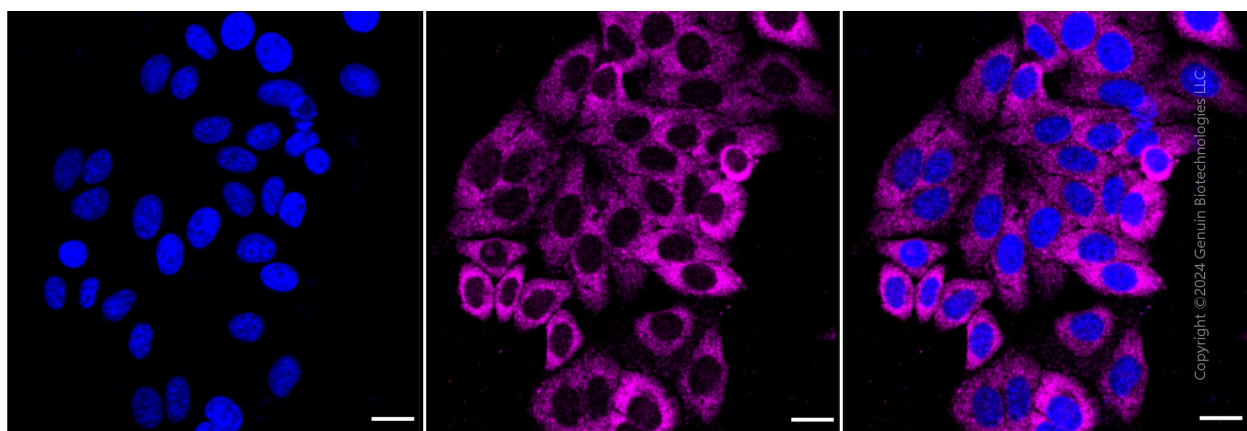
Note: This product is for research use only.

Validation Data



Copyright ©2024 Genuin Biotechnologies LLC

Flow cytometric analysis of Sphingosine-1-phosphate receptor 1 expression in HepG2 cells using anti-Sphingosine-1-phosphate receptor 1 antibody (Cat#2567, 1:2,000). Green, isotype control; red, Sphingosine-1-phosphate receptor 1.



Immunocytochemical staining of HepG2 cells with anti-Sphingosine-1-phosphate receptor 1 antibody (Cat#2567, 1:1,000). Nuclei were stained blue with DAPI; Sphingosine-1-phosphate

SUPPORT

SUPPORT@GENUINBIOTECH.COM
TEL: +1-540-855-7041

ORDERS

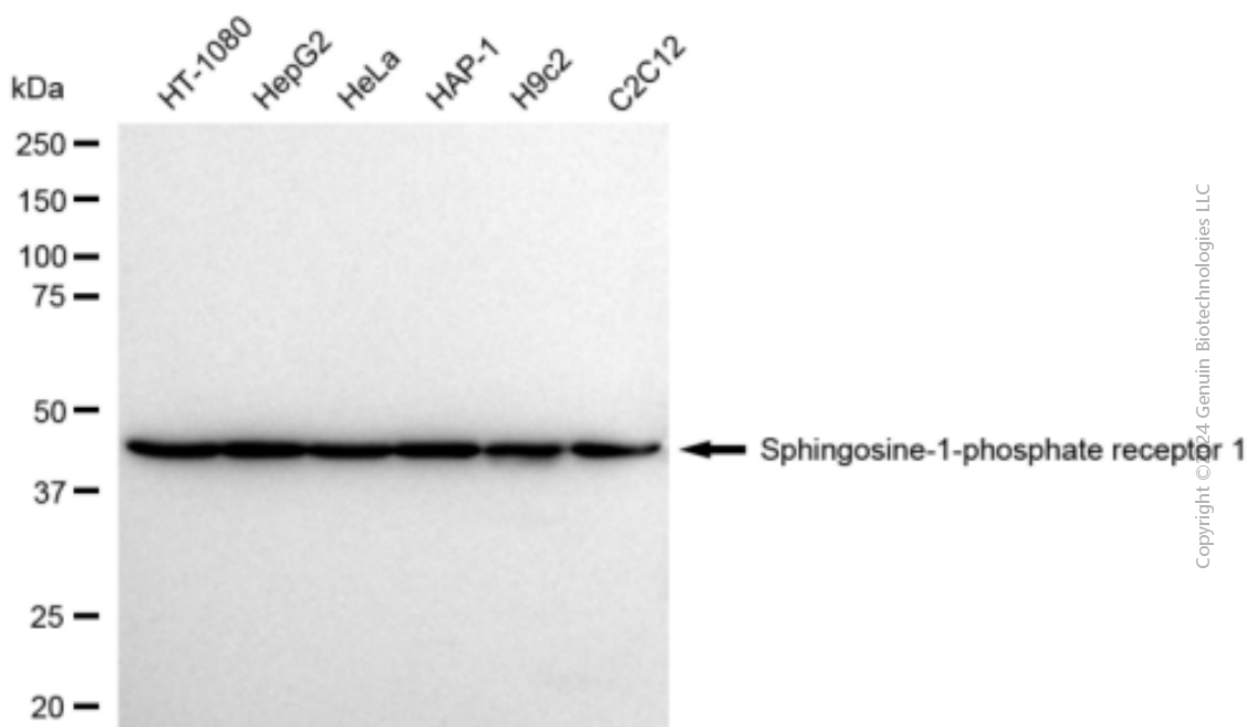
SALES@GENUINBIOTECH.COM
FAX: +1-540-855-7041

WWW.GENUINBIOTECH.COM

Anti-Sphingosine-1-Phosphate Receptor 1 Recombinant Rabbit Monoclonal Antibody

PAGE 3

receptor 1 was stained magenta with Alexa Fluor® 647. Images were taken using Leica stellaris 5. Protein abundance based on laser Intensity and smart gain: Medium. Scale bar: 20 µm.



Copyright © 2024 Genuin Biotechnologies LLC

Western blotting analysis using anti-Sphingosine-1-phosphate receptor 1 antibody (Cat#2567). Total cell lysates (30 µg) from various cell lines were loaded and separated by SDS-PAGE. The blot was incubated with anti-Sphingosine-1-phosphate receptor 1 antibody (Cat#2567, 1:5,000) and HRP-conjugated goat anti-rabbit secondary antibody (Cat#201, 1:20,000) respectively. Image was developed using FeQ™ ECL Substrate Kit (Cat#226).

SUPPORT

SUPPORT@GENUINBIOTECH.COM
TEL: +1-540-855-7041

ORDERS

SALES@GENUINBIOTECH.COM
FAX: +1-540-855-7041

WWW.GENUINBIOTECH.COM