

Anti-Podoplanin Recombinant Rabbit Monoclonal Antibody



Catalog #: 2568

Aliases

PDPN; Podoplanin; Aggrus; PA2.26; T1A-2; D2-40; Gp38; GP40; Lung Type I Cell Membrane Associated Glycoprotein; Glycoprotein 36; PA2.26 Antigen; T1-Alpha; GP36; T1A; Lung Type-I Cell Membrane-Associated Glycoprotein (T1A-2); Glycoprotein, 36-KD; HT1alpha-1; HT1alpha-2; HT1A-1; OTS8; T1A2; TI1A; Gp36

Background

Gene Name: PDPN

NCBI Gene Entry: [10630](#)

UniProt Entry: [Q86YL7](#)

Application Information

Molecular Weight: Predicted, 17 kDa; observed, 36 kDa

Clonality: Rabbit monoclonal antibody

Clone ID: 24GB1440

Species Reactivity: Human, mouse

Applications Tested: Western blotting (WB), flow cytometry (FCM), immunocytochemistry (IC)

Immunogen

A synthesized peptide derived from human Podoplanin

Isotype

Rabbit IgG

Storage Buffer

Supplied in PBS (pH 7.4) containing 50% glycerol, and 0.02% sodium azide.

Storage

Store at -20 °C for one year.

Recommended Dilutions

Western Blotting (WB): 1:1,000-1:5,000

Flow Cytometry (FCM): 1:2,000

Immunocytochemistry (IC): 1:100-1:1,000

SUPPORT

SUPPORT@GENUINBIOTECH.COM
TEL: +1-540-855-7041

ORDERS

SALES@GENUINBIOTECH.COM
FAX: +1-540-855-7041

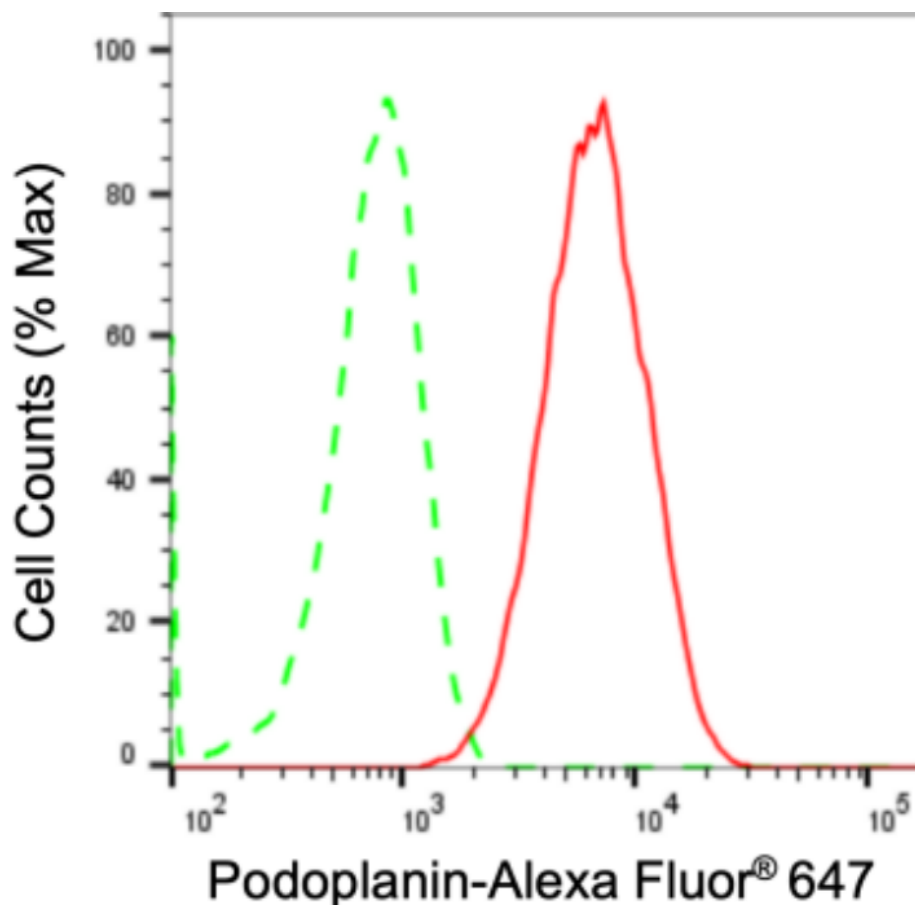
WWW.GENUINBIOTECH.COM

Anti-Podoplanin Recombinant Rabbit Monoclonal Antibody

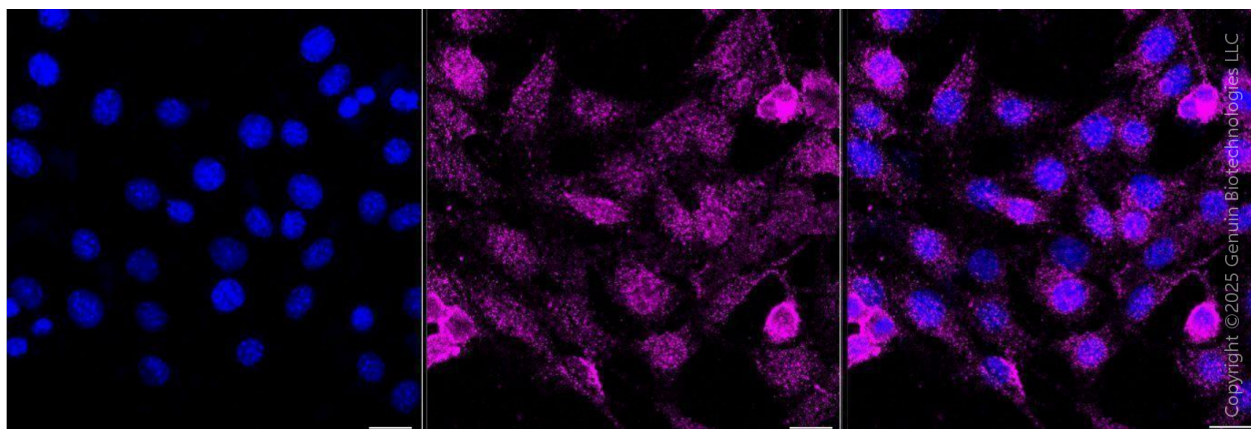
PAGE 2

Note: This product is for research use only.

Validation Data



Flow cytometric analysis of Podoplanin expression in C2C12 cells using anti-Podoplanin antibody (Cat#2568, 1:2,000). Green, isotype control; red, Podoplanin.



Immunocytochemical staining of C2C12 cells with anti-Podoplanin antibody (Cat#2568, 1:1,000). Nuclei were stained blue with DAPI; Podoplanin was stained magenta with Alexa Fluor® 647. Images were taken using Leica stellaris 5. Protein abundance based on laser Intensity

SUPPORT

SUPPORT@GENUINBIOTECH.COM
TEL: +1-540-855-7041

ORDERS

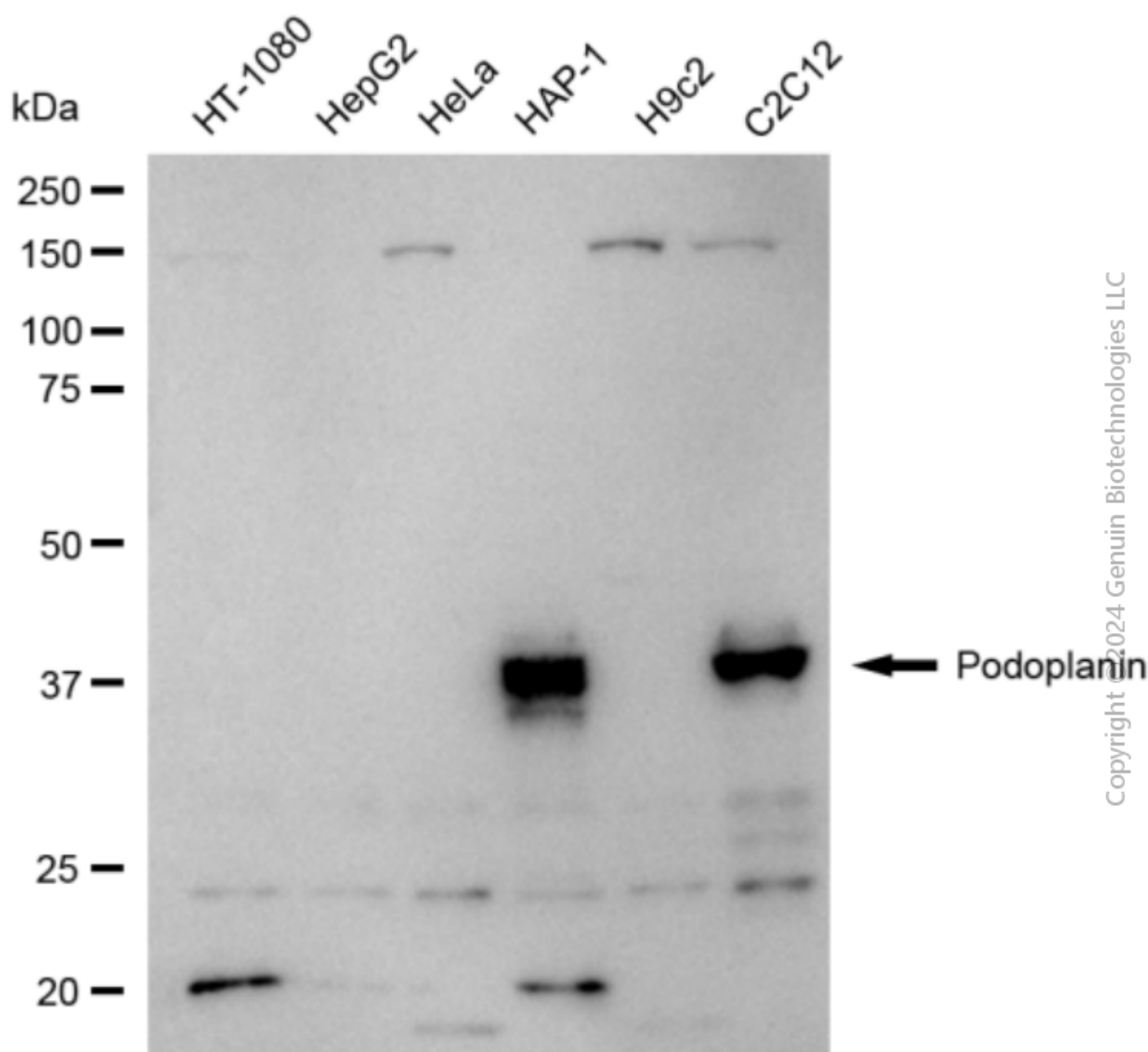
SALES@GENUINBIOTECH.COM
FAX: +1-540-855-7041

WWW.GENUINBIOTECH.COM

Anti-Podoplanin Recombinant Rabbit Monoclonal Antibody

PAGE 3

and smart gain: Medium. Scale bar, 20 μ m.



Western blotting analysis using anti-Podoplanin antibody (Cat#2568). Total cell lysates (30 μ g) from various cell lines were loaded and separated by SDS-PAGE. The blot was incubated with anti-Podoplanin antibody (Cat#2568, 1:5,000) and HRP-conjugated goat anti-rabbit secondary antibody (Cat#201, 1:20,000) respectively. Image was developed using FeQ™ ECL Substrate Kit (Cat#226).

SUPPORT

SUPPORT@GENUINBIOTECH.COM
TEL: +1-540-855-7041

ORDERS

SALES@GENUINBIOTECH.COM
FAX: +1-540-855-7041

WWW.GENUINBIOTECH.COM