

# Anti-SFRP1 Recombinant Rabbit Monoclonal Antibody



**Catalog #: 2570**

## Aliases

SFRP1; Secreted Frizzled Related Protein 1; SARP2; FRP-1; FRP; Secreted Apoptosis-Related Protein 2; Secreted Frizzled-Related Protein 1; SARP-2; SFRP-1; FRP1; Frizzled-Related Protein; FrzA;

## Background

Gene Name: SFRP1

NCBI Gene Entry: [6422](#)

UniProt Entry: [Q8N474](#)

## Application Information

Molecular Weight: Predicted, 35 kDa; observed, 35 kDa

Clonality: Rabbit monoclonal antibody

Clone ID: 24GB1450

Species Reactivity: Human

Applications Tested: Western blotting (WB)

## Immunogen

A synthesized peptide derived from human SFRP1

## Isotype

Rabbit IgG

## Storage Buffer

Supplied in PBS (pH 7.4) containing 50% glycerol, and 0.02% sodium azide.

## Storage

Store at -20 °C for one year.

## Recommended Dilutions

Western Blotting (WB): 1:1,000-1:5,000

**Note:** This product is for research use only.

## Validation Data

---

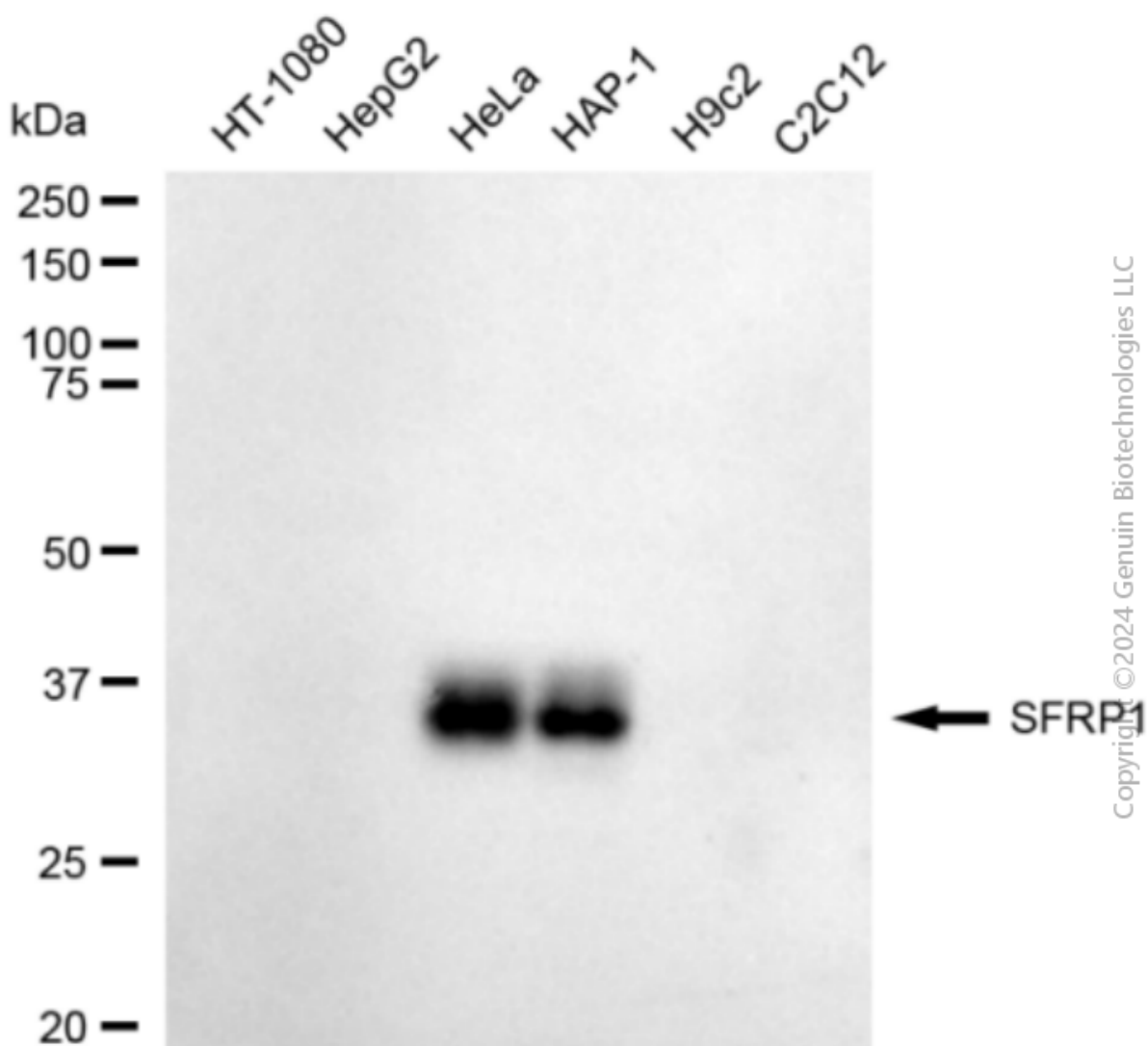
### SUPPORT

SUPPORT@GENUINBIOTECH.COM  
TEL: +1-540-855-7041

### ORDERS

SALES@GENUINBIOTECH.COM  
FAX: +1-540-855-7041

[WWW.GENUINBIOTECH.COM](http://WWW.GENUINBIOTECH.COM)



Western blotting analysis using anti-SFRP1 antibody (Cat#2570). Total cell lysates (30  $\mu$ g) from various cell lines were loaded and separated by SDS-PAGE. The blot was incubated with anti-SFRP1 antibody (Cat#2570, 1:5,000) and HRP-conjugated goat anti-rabbit secondary antibody (Cat#201, 1:20,000) respectively. Image was developed using FeQ™ ECL Substrate Kit (Cat#226).