

# Anti-Sarcoglycan Alpha Recombinant Rabbit Monoclonal Antibody



**Catalog #: 2572**

## Aliases

SGCA; Sarcoglycan Alpha; Adhalin; SCARMD1; LGMD2D; DMDA2; ADL; Sarcoglycan, Alpha (50kDa Dystrophin-Associated Glycoprotein); 50 KDa Dystrophin-Associated Glycoprotein; Limb Girdle Muscular Dystrophy 2D; Alpha-Sarcoglycan; Dystroglycan-2; 50kD DAG; Alpha-SG; 50DAG; DAG2; A2; LGMDR3

## Background

Gene Name: SGCA

NCBI Gene Entry: [6442](#)

UniProt Entry: [Q16586](#)

## Application Information

Molecular Weight: Predicted, 43 kDa; observed, 50 kDa

Clonality: Rabbit monoclonal antibody

Clone ID: 24GB1460

Species Reactivity: Mouse, rat

Applications Tested: Western blotting (WB), flow cytometry (FCM), immunocytochemistry (IC)

## Immunogen

A synthesized peptide derived from human alpha Sarcoglycan

## Isotype

Rabbit IgG

## Storage Buffer

Supplied in PBS (pH 7.4) containing 50% glycerol, and 0.02% sodium azide.

## Storage

Store at -20 °C for one year.

## Recommended Dilutions

Western Blotting (WB): 1:1,000-1:5,000

Flow Cytometry (FCM): 1:2,000

Immunocytochemistry (IC): 1:100-1:1,000

---

### SUPPORT

SUPPORT@GENUINBIOTECH.COM  
TEL: +1-540-855-7041

### ORDERS

SALES@GENUINBIOTECH.COM  
FAX: +1-540-855-7041

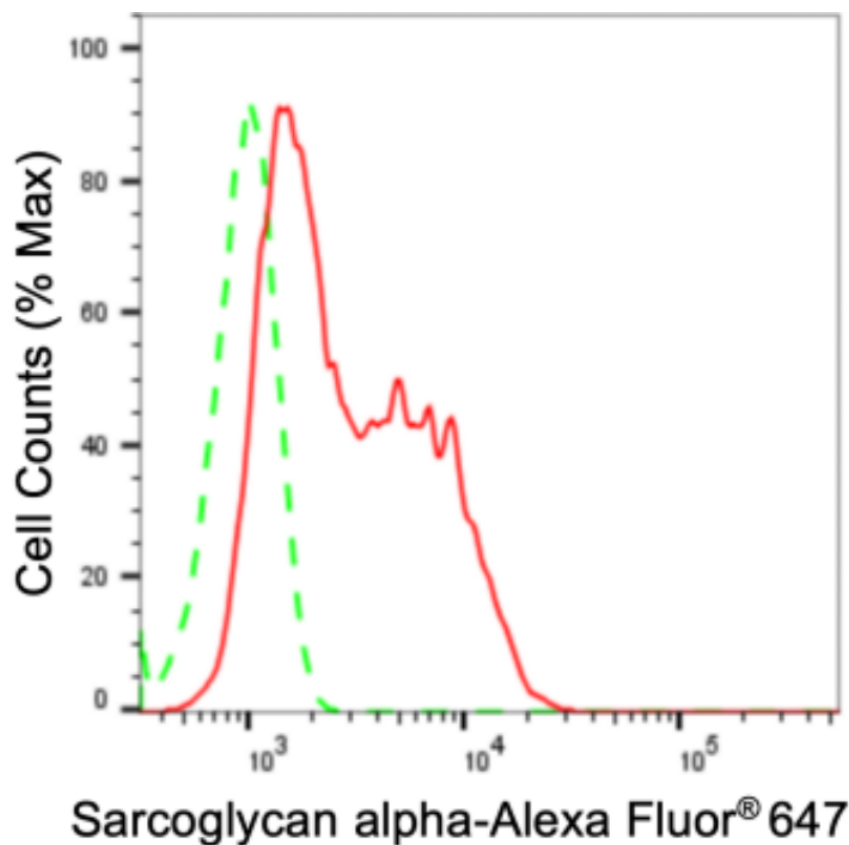
[WWW.GENUINBIOTECH.COM](http://WWW.GENUINBIOTECH.COM)

# Anti-Sarcoglycan Alpha Recombinant Rabbit Monoclonal Antibody

PAGE 2

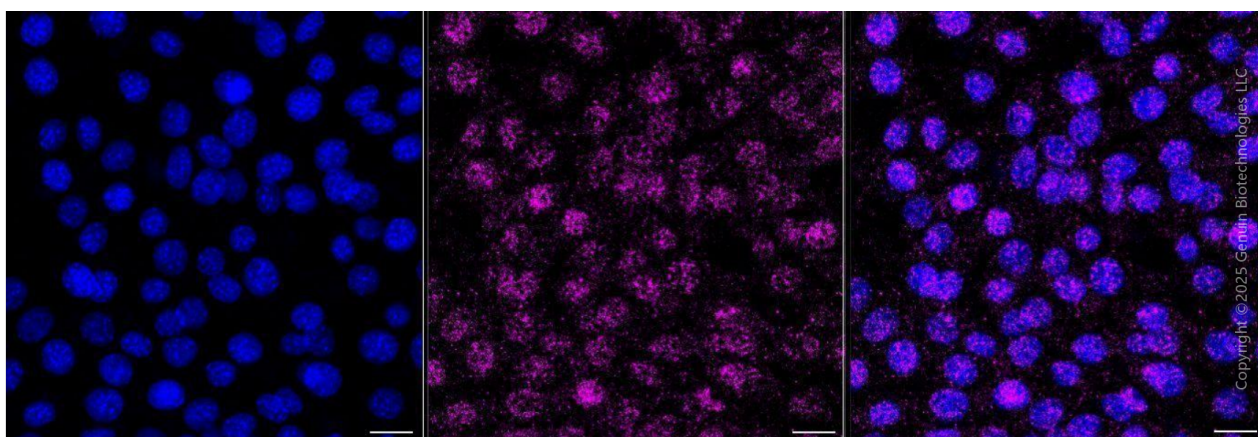
**Note:** This product is for research use only.

## Validation Data



Copyright ©2024 Genuin Biotechnologies LLC

Flow cytometric analysis of Sarcoglycan alpha expression in C2C12 cells using anti-Sarcoglycan alpha antibody (Cat#2572, 1:2,000). Green, isotype control; red, Sarcoglycan alpha.



Immunocytochemical staining of C2C12 cells with anti-Sarcoglycan alpha antibody (Cat#2572, 1:1,000) . Nuclei were stained blue with DAPI; Sarcoglycan alpha was stained magenta with Alexa Fluor® 647. Images were taken using Leica stellaris 5. Protein abundance based on laser Intensity and smart gain: Medium. Scale bar, 20  $\mu$ m.

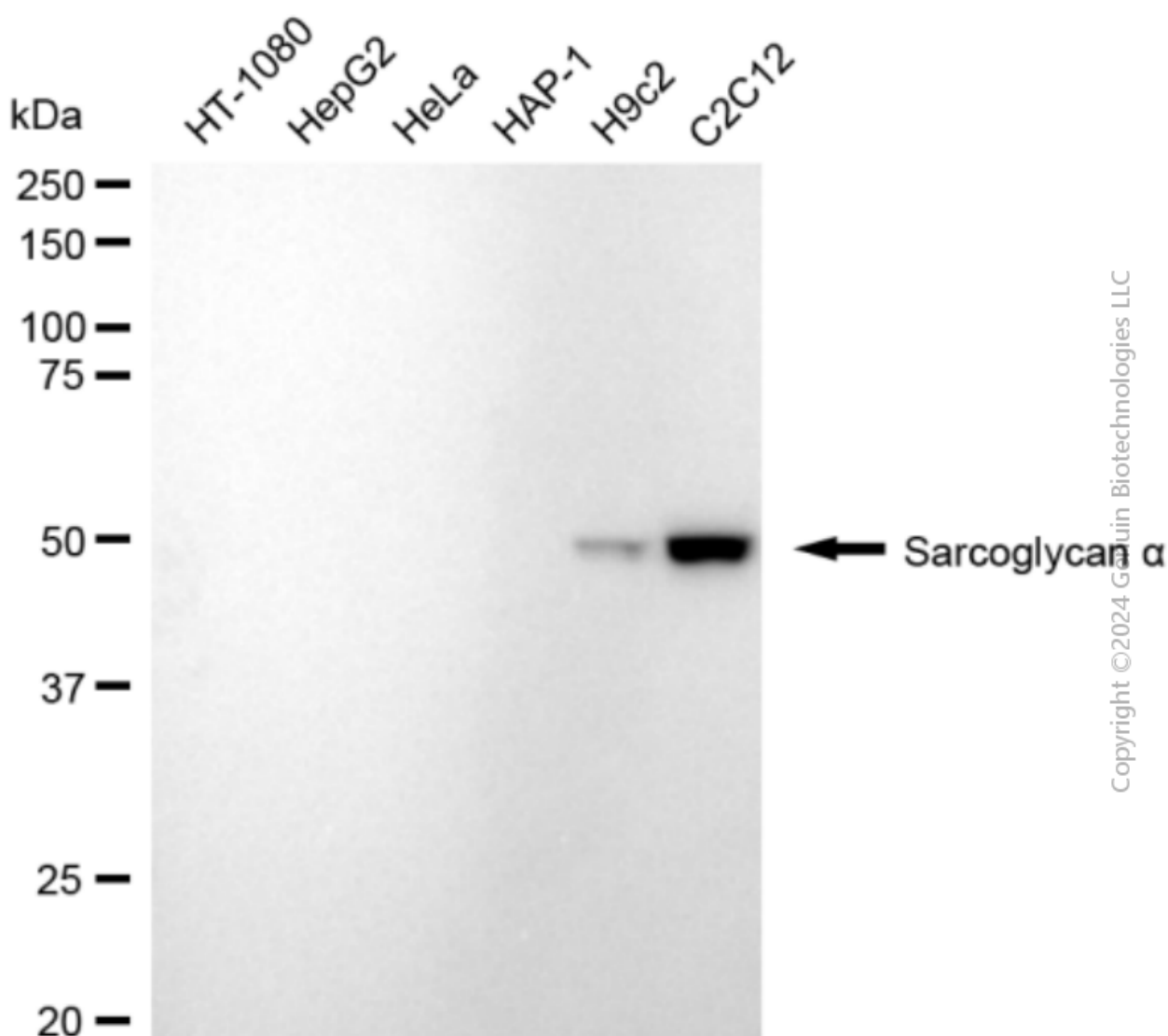
### SUPPORT

SUPPORT@GENUINBIOTECH.COM  
TEL: +1-540-855-7041

### ORDERS

SALES@GENUINBIOTECH.COM  
FAX: +1-540-855-7041

[WWW.GENUINBIOTECH.COM](http://WWW.GENUINBIOTECH.COM)



Western blotting analysis using anti-Sarcoglycan alpha antibody (Cat#2572). Total cell lysates (10 µg for C2C12 and 30 µg for others) from various cell lines were loaded and separated by SDS-PAGE. The blot was incubated with anti-Sarcoglycan alpha antibody (Cat#2572, 1:5,000) and HRP-conjugated goat anti-rabbit secondary antibody (Cat#201, 1:20,000) respectively. Image was developed using FeQ™ ECL Substrate Kit (Cat#226).