

Anti-Serpin Family A Member 3 Recombinant Rabbit Monoclonal Antibody



Catalog #: 2578

Aliases

Serpin Family A Member 3; ACT; Alpha-1-Antichymotrypsin; AACT; Serpin Peptidase Inhibitor, Clade A (Alpha-1 Antiproteinase, Antitrypsin), Member3; Cell Growth-Inhibiting Gene 24/25 Protein; Serpin A3; Serine (Or Cysteine) Proteinase Inhibitor, Clade A (Alpha-1 Antiproteinase, Antitrypsin), Member 3; Serine (Or Cysteine) Proteinase Inhibitor, Clade A, Member 3; Growth-Inhibiting Protein 24; Growth-Inhibiting Protein 25; Alpha-1 Antichymotrypsin; GIG24; GIG25

Background

Gene Name: SERPINA3

NCBI Gene Entry: [12](#)

UniProt Entry: [P01011](#)

Application Information

Molecular Weight: Predicted, 48 kDa; observed, 48 kDa

Clonality: Rabbit monoclonal antibody

Clone ID: 24GB1490

Species Reactivity: Human

Applications Tested: Western blotting (WB), immunocytochemistry (IC)

Immunogen

Native protein of human Serpin Family A Member 3

Isotype

Rabbit IgG

Storage Buffer

Supplied in PBS (pH 7.4) containing 50% glycerol, and 0.02% sodium azide.

Storage

Store at -20 °C for one year.

Recommended Dilutions

Western Blotting (WB): 1:1,000-1:5,000, Immunocytochemistry (IC): 1:100-1:1,000

Note: This product is for research use only.

SUPPORT

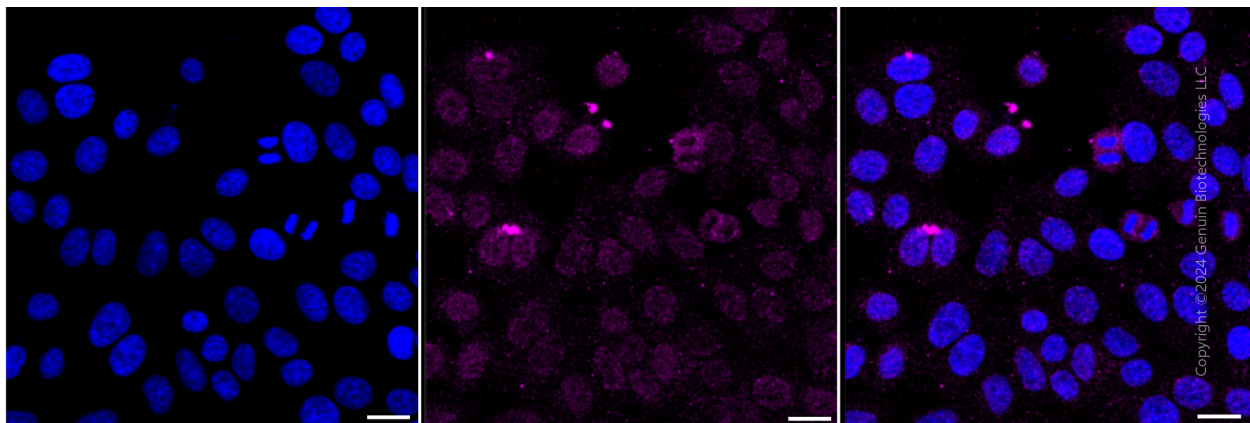
SUPPORT@GENUINBIOTECH.COM
TEL: +1-540-855-7041

ORDERS

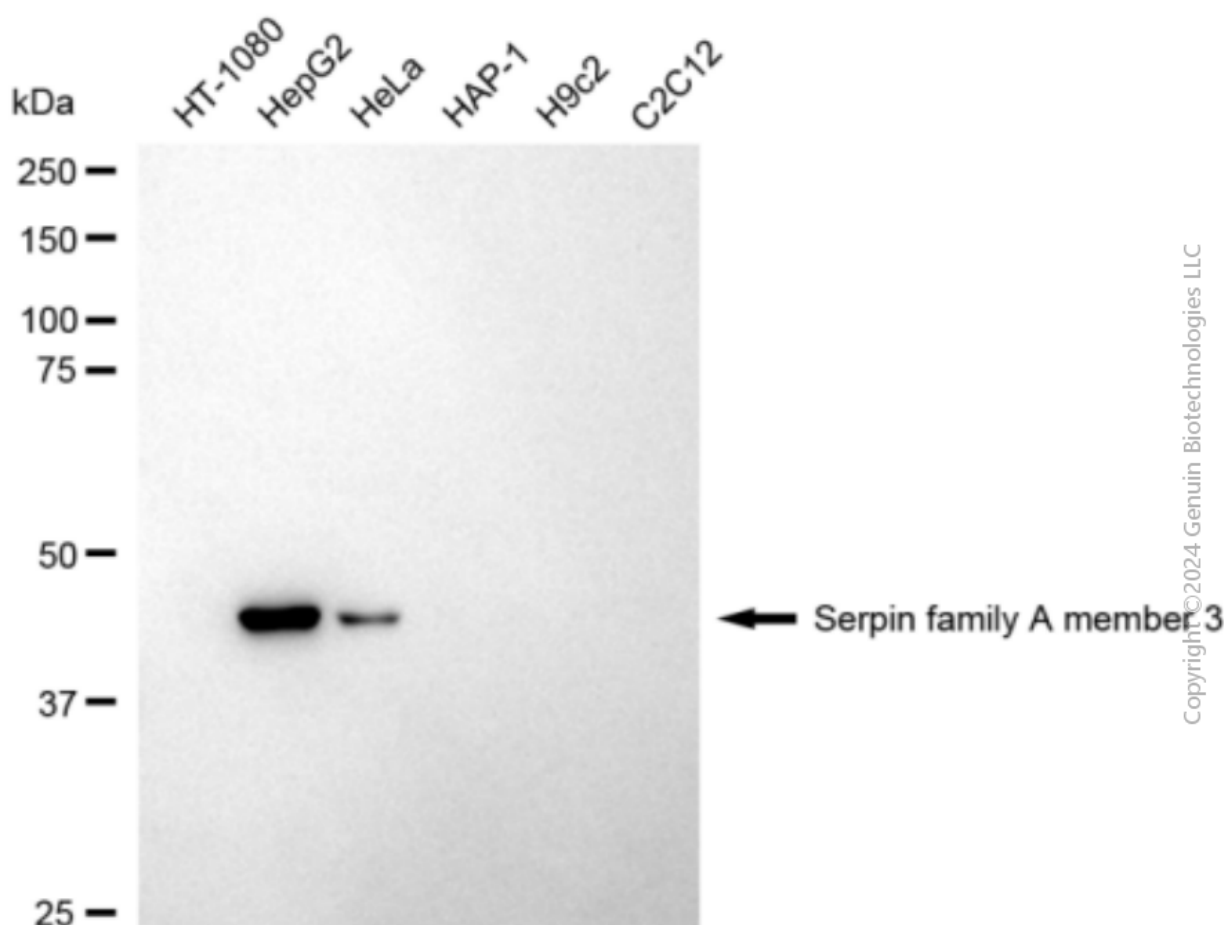
SALES@GENUINBIOTECH.COM
FAX: +1-540-855-7041

WWW.GENUINBIOTECH.COM

Validation Data



Immunocytochemical staining of HepG2 cells with anti-Serpin family A member 3 antibody (Cat#2578, 1:1,000). Nuclei were stained blue with DAPI; Serpin family A member 3 was stained magenta with Alexa Fluor® 647. Images were taken using Leica stellaris 5. Protein abundance based on laser Intensity and smart gain: Medium. Scale bar: 20 μ m.



Western blotting analysis using anti-Serpin family A member 3 antibody (Cat#2578). Total cell

SUPPORT

SUPPORT@GENUINBIOTECH.COM
TEL: +1-540-855-7041

ORDERS

SALES@GENUINBIOTECH.COM
FAX: +1-540-855-7041

WWW.GENUINBIOTECH.COM

Anti-Serpin Family A Member 3 Recombinant Rabbit Monoclonal Antibody

PAGE 3

lysates (30 µg) from various cell lines were loaded and separated by SDS-PAGE. The blot was incubated with anti-Serpin family A member 3 antibody (Cat#2578, 1:5,000) and HRP-conjugated goat anti-rabbit secondary antibody (Cat#201, 1:20,000) respectively. Image was developed using FeQ™ ECL Substrate Kit (Cat#226).

SUPPORT

SUPPORT@GENUINBIOTECH.COM
TEL: +1-540-855-7041

ORDERS

SALES@GENUINBIOTECH.COM
FAX: +1-540-855-7041

WWW.GENUINBIOTECH.COM