

# Anti-Prohibitin 2 Recombinant Rabbit Monoclonal Antibody



**Catalog #: 2593**

## Aliases

Prohibitin 2; REA; BCAP37; Bap37; P22; B-Cell Receptor-Associated Protein BAP37; Repressor Of Estrogen Receptor Activity; B Cell Receptor Associated Protein 37; Prohibitin-2; D-Prohibitin; BAP; B-Cell Associated Protein; PNAS-141; HBAP

## Background

Gene Name: PHB2

NCBI Gene Entry: [11331](#)

UniProt Entry: [Q99623](#)

## Application Information

Molecular Weight: Predicted, 33 kDa; observed, 30 kDa

Clonality: Rabbit monoclonal antibody

Clone ID: 24GB1555

Species Reactivity: Human, mouse, rat

Applications Tested: Western blotting (WB), flow cytometry (FCM), immunocytochemistry (IC)

## Immunogen

A synthesized peptide derived from human REA

## Isotype

Rabbit IgG

## Storage Buffer

Supplied in PBS (pH 7.4) containing 50% glycerol, and 0.02% sodium azide.

## Storage

Store at -20 °C for one year.

## Recommended Dilutions

Western Blotting (WB): 1:1,000-1:5,000

Flow Cytometry (FCM): 1:2,000

Immunocytochemistry (IC): 1:100-1:1,000

**Note:** This product is for research use only.

---

### SUPPORT

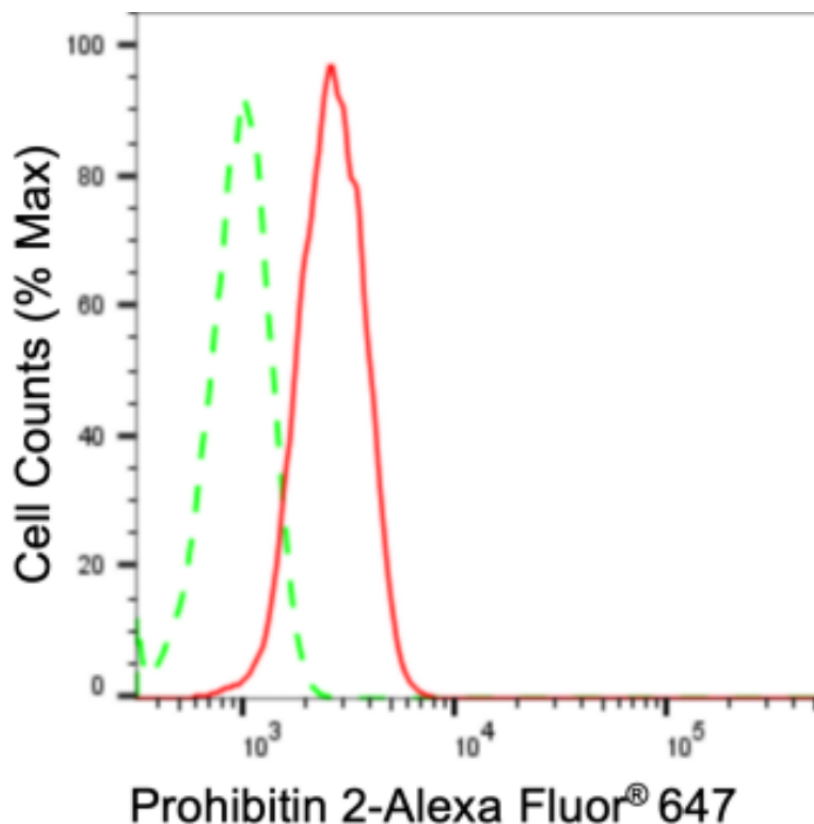
SUPPORT@GENUINBIOTECH.COM  
TEL: +1-540-855-7041

### ORDERS

SALES@GENUINBIOTECH.COM  
FAX: +1-540-855-7041

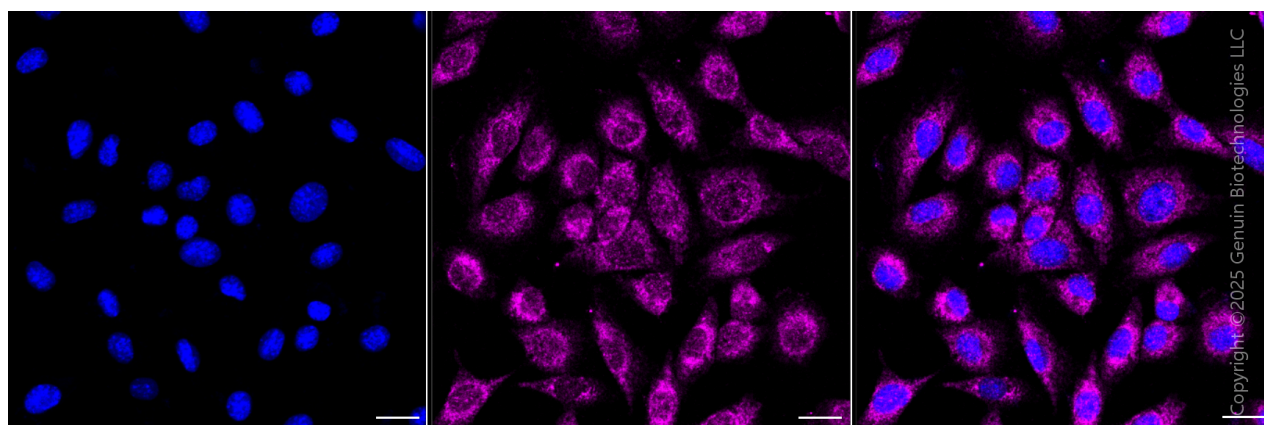
[WWW.GENUINBIOTECH.COM](http://WWW.GENUINBIOTECH.COM)

## Validation Data



Copyright ©2024 Genuin Biotechnologies LLC

Flow cytometric analysis of Prohibitin 2 expression in C2C12 cells using anti-Prohibitin 2 antibody (Cat#2593, 1:2,000). Green, isotype control; red, Prohibitin 2.



Copyright ©2025 Genuin Biotechnologies LLC

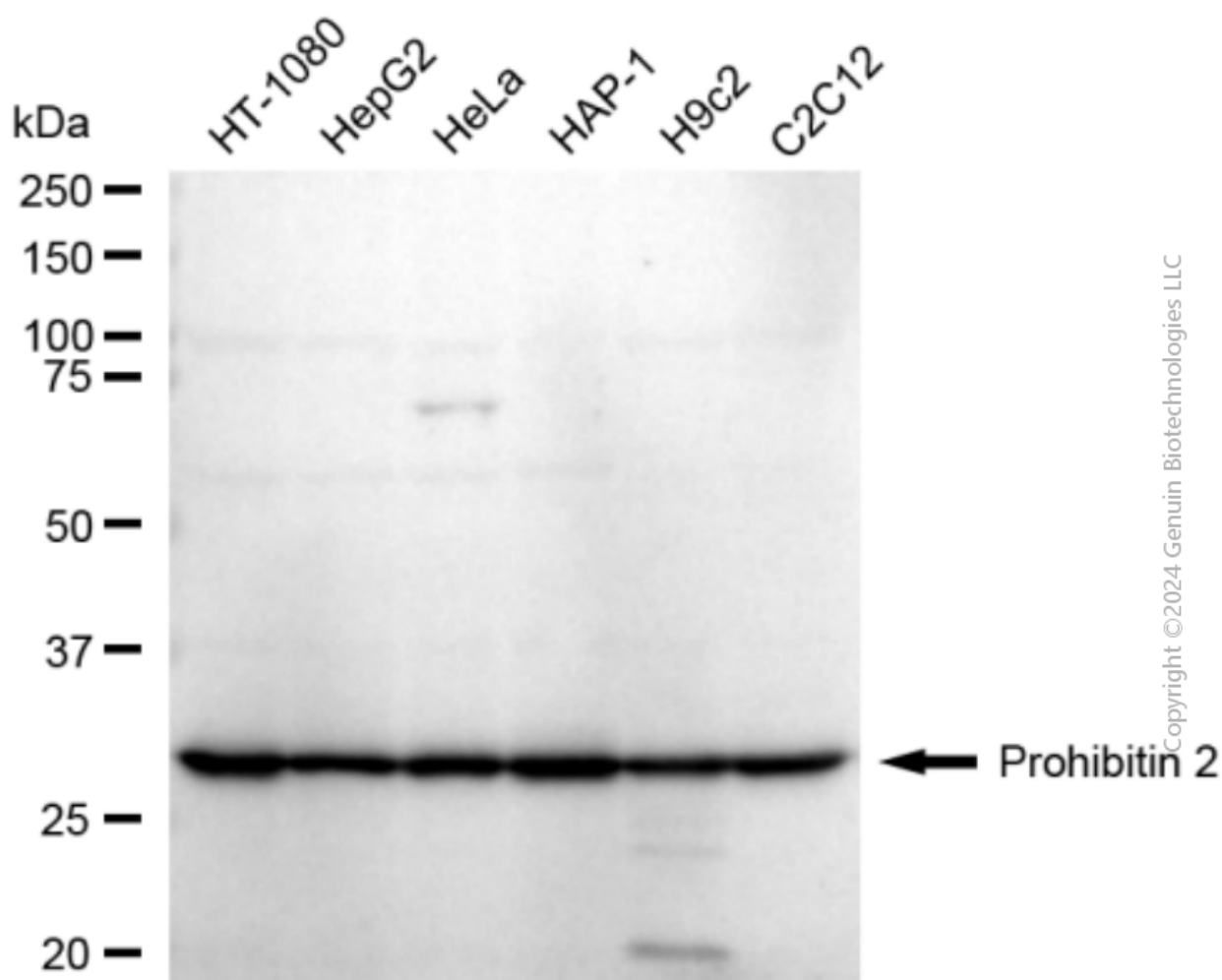
### SUPPORT

SUPPORT@GENUINBIOTECH.COM  
TEL: +1-540-855-7041

### ORDERS

SALES@GENUINBIOTECH.COM  
FAX: +1-540-855-7041

WWW.GENUINBIOTECH.COM



Western blotting analysis using anti-Prohibitin 2 antibody (Cat#2593). Total cell lysates (30 µg) from various cell lines were loaded and separated by SDS-PAGE. The blot was incubated with anti-Prohibitin 2 antibody (Cat#2593, 1:5,000) and HRP-conjugated goat anti-rabbit secondary antibody (Cat#201, 1:20,000) respectively. Image was developed using FeQ™ ECL Substrate Kit (Cat#226).