

Anti-SAE1 Recombinant Rabbit Monoclonal Antibody



Catalog #: 2595

Aliases

SUMO1 Activating Enzyme Subunit 1; AOS1; Sua1; Ubiquitin-Like 1-Activating Enzyme E1A; SUMO-Activating Enzyme Subunit 1; FLJ3091; UBLE1A; Ubiquitin-Like Protein SUMO-1 Activating Enzyme; SUMO-1 Activating Enzyme E1 N Subunit; Sentrin/SUMO-Activating Protein AOS1; SUMO-1 Activating Enzyme Subunit 1; Activator Of Sumo 1; Activator Of SUMO1; HSPC140; SUA1

Background

Gene Name: SAE1

NCBI Gene Entry: [10055](#)

UniProt Entry: [Q9UBE0](#)

Application Information

Molecular Weight: Predicted, 38 kDa; observed, 36 kDa

Clonality: Rabbit monoclonal antibody

Clone ID: 24GB1565

Species Reactivity: Human

Applications Tested: Western blotting (WB), flow cytometry (FCM), immunocytochemistry (IC)

Immunogen

A synthesized peptide derived from human SAE1

Isotype

Rabbit IgG

Storage Buffer

Supplied in PBS (pH 7.4) containing 50% glycerol, and 0.02% sodium azide.

Storage

Store at -20 °C for one year.

Recommended Dilutions

Western Blotting (WB): 1:1,000-1:5,000

Flow Cytometry (FCM): 1:2,000

Immunocytochemistry (IC): 1:100-1:1,000

SUPPORT

SUPPORT@GENUINBIOTECH.COM
TEL: +1-540-855-7041

ORDERS

SALES@GENUINBIOTECH.COM
FAX: +1-540-855-7041

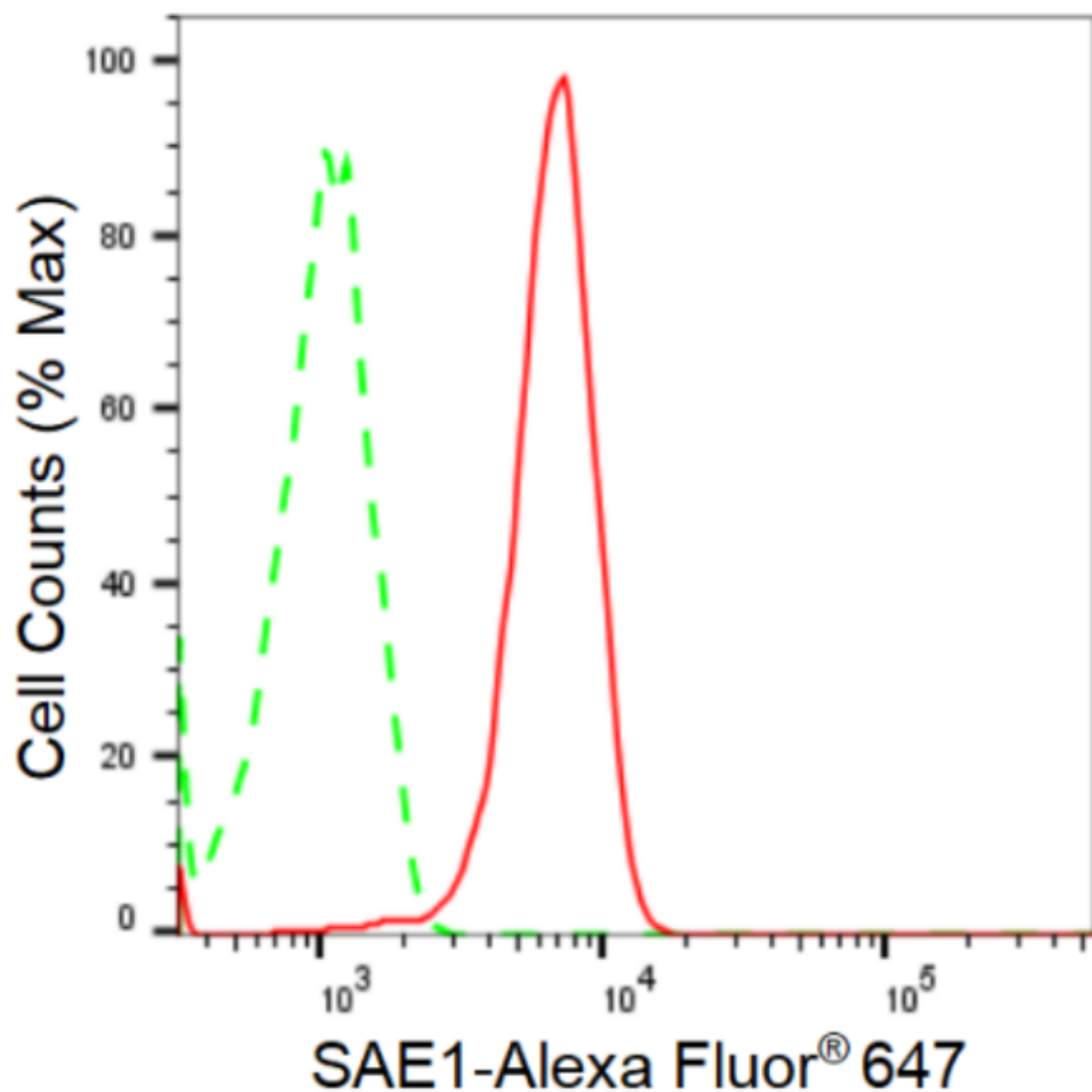
WWW.GENUINBIOTECH.COM

Anti-SAE1 Recombinant Rabbit Monoclonal Antibody

PAGE 2

Note: This product is for research use only.

Validation Data



Copyright ©2024 Genuin Biotechnologies LLC

Flow cytometric analysis of SAE1 expression in HeLa cells using anti-SAE1 antibody (Cat#2595, 1:2,000). Green, isotype control; red, SAE1.

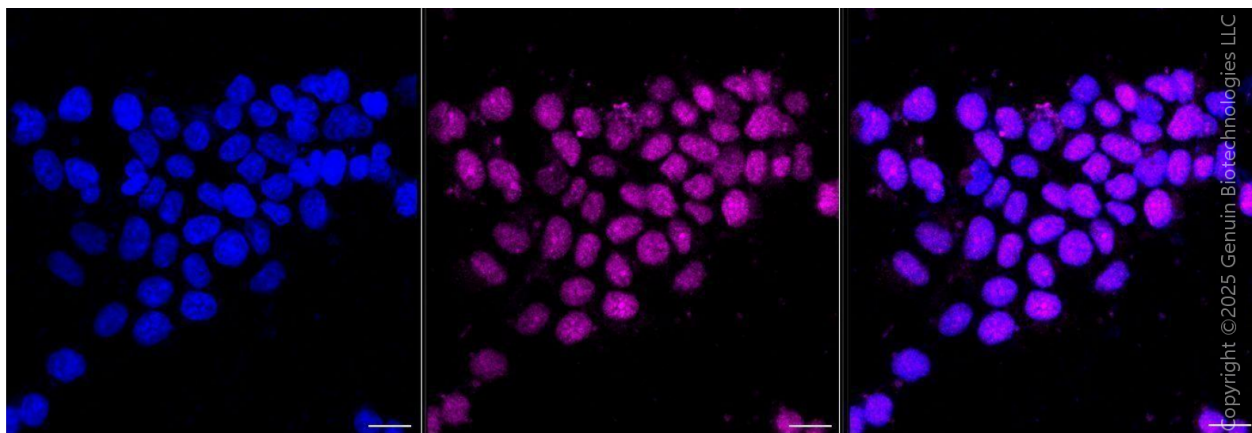
SUPPORT

SUPPORT@GENUINBIOTECH.COM
TEL: +1-540-855-7041

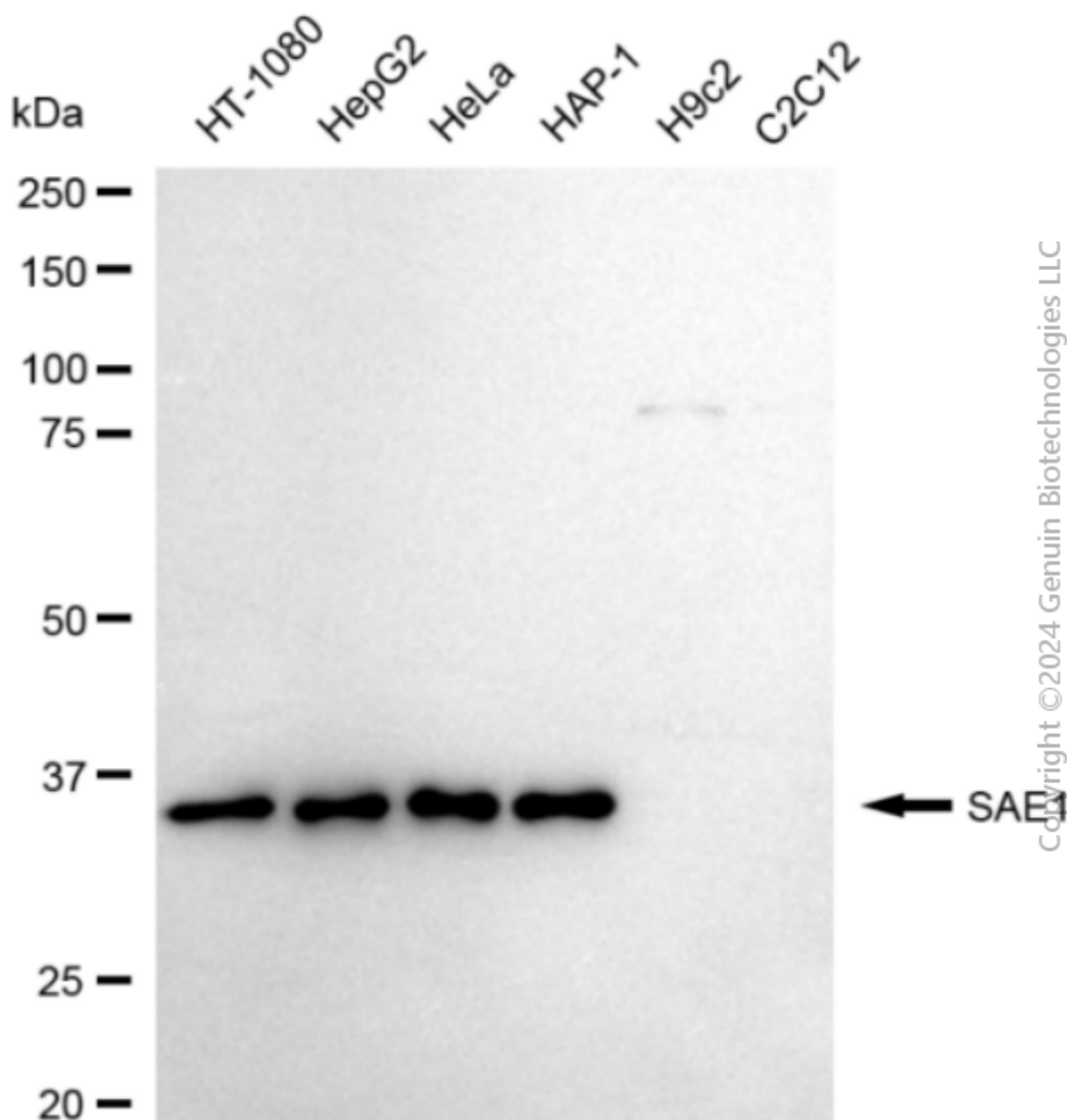
ORDERS

SALES@GENUINBIOTECH.COM
FAX: +1-540-855-7041

WWW.GENUINBIOTECH.COM



Immunocytochemical staining of HeLa cells with anti-SAE1 antibody (Cat#2595, 1:1,000) . Nuclei were stained blue with DAPI; SAE1 was stained magenta with Alexa Fluor® 647. Images were taken using Leica stellaris 5. Protein abundance based on laser Intensity and smart gain: Medium. Scale bar, 20 μ m.



Western blotting analysis using anti-SAE1 antibody (Cat#2595). Total cell lysates (30 μ g) from various cell lines were loaded and separated by SDS-PAGE. The blot was incubated with anti-SAE1 antibody (Cat#2595, 1:5,000) and HRP-conjugated goat anti-rabbit secondary antibody (Cat#201, 1:20,000) respectively. Image was developed using FeQ™ ECL Substrate Kit (Cat#226).