

Anti-POU Class 2 Homeobox 1 Recombinant Rabbit Monoclonal Antibody



Catalog #: 2598

Aliases

POU Class 2 Homeobox 1; OCT1; OTF1; POU Domain, Class 2, Transcription Factor 1; Octamer-Binding Transcription Factor 1; Octamer-Binding Protein 1; NF-A1; OTF-1; Oct-1; POU Domain Class 2, Transcription Factor 1; Octamer-Binding Transcription Factor-1; Oct-1B; Oct1Z

Background

Gene Name: POU2F1

NCBI Gene Entry: [5451](#)

UniProt Entry: [P14859](#)

Application Information

Molecular Weight: Predicted, 76 kDa; observed, 95 kDa

Clonality: Rabbit monoclonal antibody

Clone ID: 24GB1580

Species Reactivity: Human, mouse, rat

Applications Tested: Western blotting (WB), flow cytometry (FCM)

Immunogen

A synthesized peptide derived from human Oct 1

Isotype

Rabbit IgG

Storage Buffer

Supplied in PBS (pH 7.4) containing 50% glycerol, and 0.02% sodium azide.

Storage

Store at -20 °C for one year.

Recommended Dilutions

Western Blotting (WB): 1:1,000-1:5,000

Flow Cytometry (FCM): 1:2,000

Note: This product is for research use only.

Validation Data

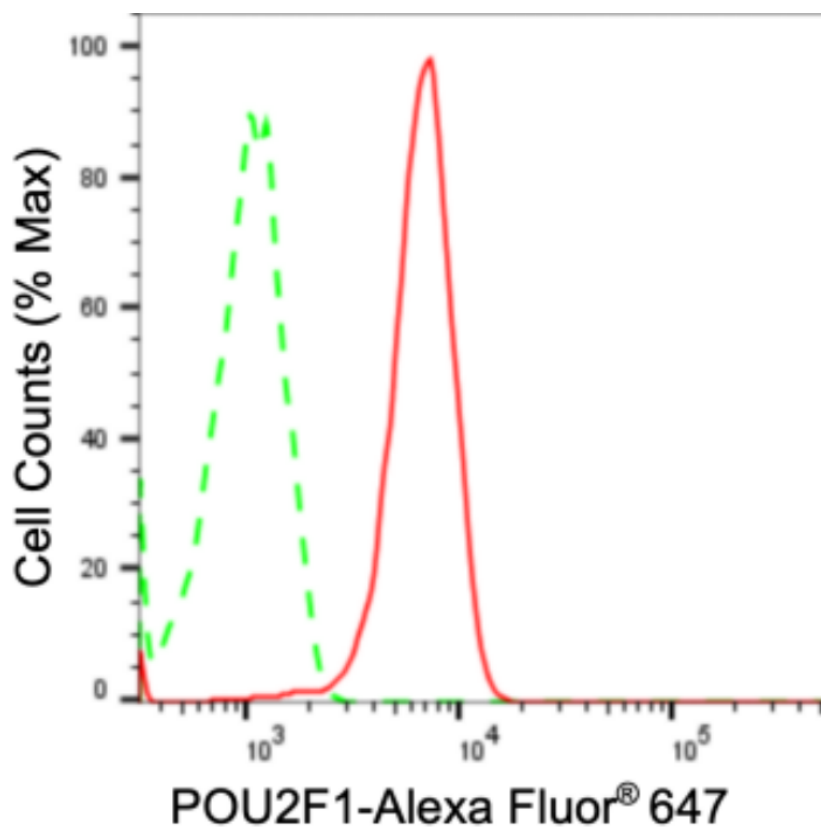
SUPPORT

SUPPORT@GENUINBIOTECH.COM
TEL: +1-540-855-7041

ORDERS

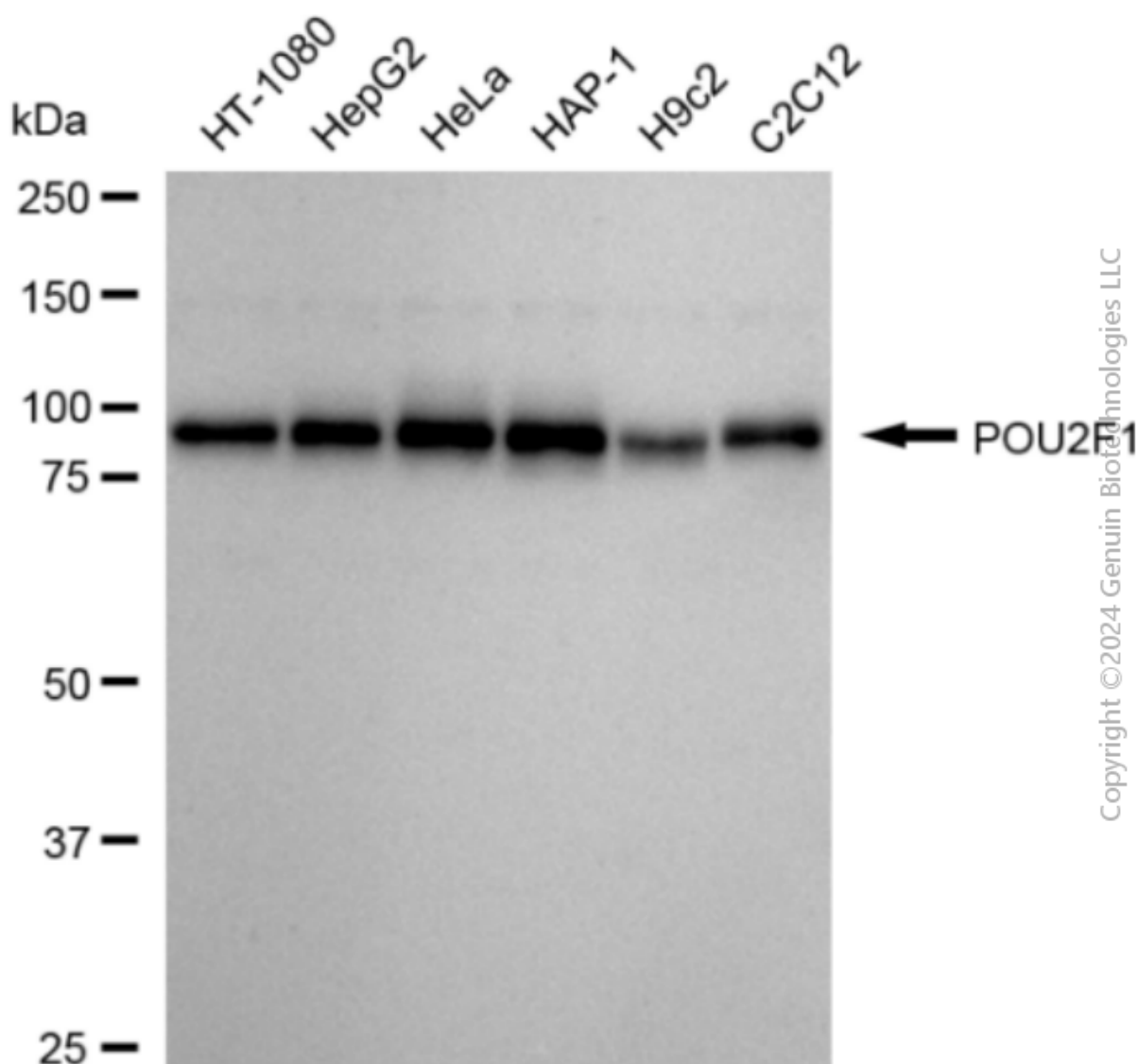
SALES@GENUINBIOTECH.COM
FAX: +1-540-855-7041

WWW.GENUINBIOTECH.COM



Copyright ©2024 Genuin Biotechnologies LLC

Flow cytometric analysis of POU2F1 expression in HeLa cells using anti-POU2F1 antibody (Cat#2598, 1:2,000). Green, isotype control; red, POU2F1.



Copyright ©2024 Genuin Biotechnologies LLC

Western blotting analysis using anti-POU2F1 antibody (Cat#2598). Total cell lysates (30 µg) from various cell lines were loaded and separated by SDS-PAGE. The blot was incubated with anti-POU2F1 antibody (Cat#2598, 1:5,000) and HRP-conjugated goat anti-rabbit secondary antibody (Cat#201, 1:20,000) respectively. Image was developed using FeQ™ ECL Substrate Kit (Cat#226).