

# Anti-SDHB Recombinant Rabbit Monoclonal Antibody



**Catalog #: 2602**

## Aliases

Succinate Dehydrogenase Complex Iron Sulfur Subunit B; Iron-Sulfur Subunit Of Complex II; SDH1; SDH; Succinate Dehydrogenase [Ubiquinone] Iron-Sulfur Subunit, Mitochondrial; Succinate Dehydrogenase Complex, Subunit B, Iron Sulfur (Ip); Succinate Dehydrogenase Complex Subunit B, Iron Sulfur (Ip); Succinate Dehydrogenase [Ubiquinone] Iron-Sulfur Subunit; EC 1.3.5.1; MC2DN4; PPGL4; SDHIP; CWS2; PGL4; SDH2; IP; Ip

## Background

Gene Name: SDHB

NCBI Gene Entry: [6390](#)

UniProt Entry: [P21912](#)

## Application Information

Molecular Weight: Predicted, 32 kDa; observed, 27 kDa

Clonality: Rabbit monoclonal antibody

Clone ID: 24GB1600

Species Reactivity: Human, mouse, rat

Applications Tested: Western blotting (WB), flow cytometry (FCM), immunocytochemistry (IC)

## Immunogen

A synthesized peptide derived from human SDHB

## Isotype

Rabbit IgG

## Storage Buffer

Supplied in PBS (pH 7.4) containing 50% glycerol, and 0.02% sodium azide.

## Storage

Store at -20 °C for one year.

## Recommended Dilutions

Western Blotting (WB): 1:1,000-1:5,000

Flow Cytometry (FCM): 1:2,000

Immunocytochemistry (IC): 1:100-1:1,000

---

### SUPPORT

SUPPORT@GENUINBIOTECH.COM  
TEL: +1-540-855-7041

### ORDERS

SALES@GENUINBIOTECH.COM  
FAX: +1-540-855-7041

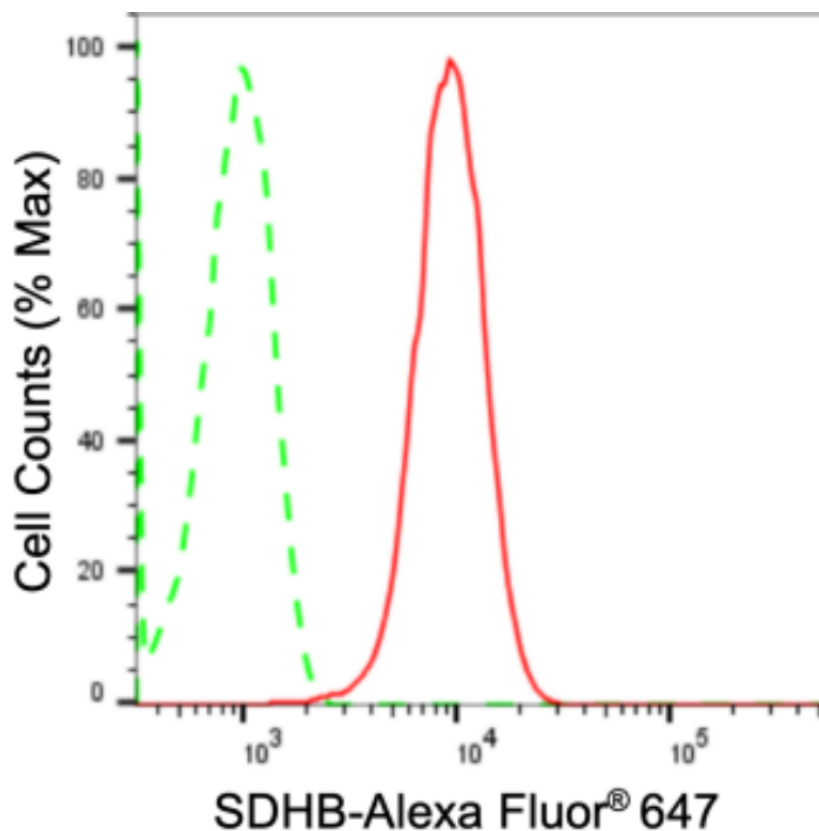
[WWW.GENUINBIOTECH.COM](http://WWW.GENUINBIOTECH.COM)

# Anti-SDHB Recombinant Rabbit Monoclonal Antibody

PAGE 2

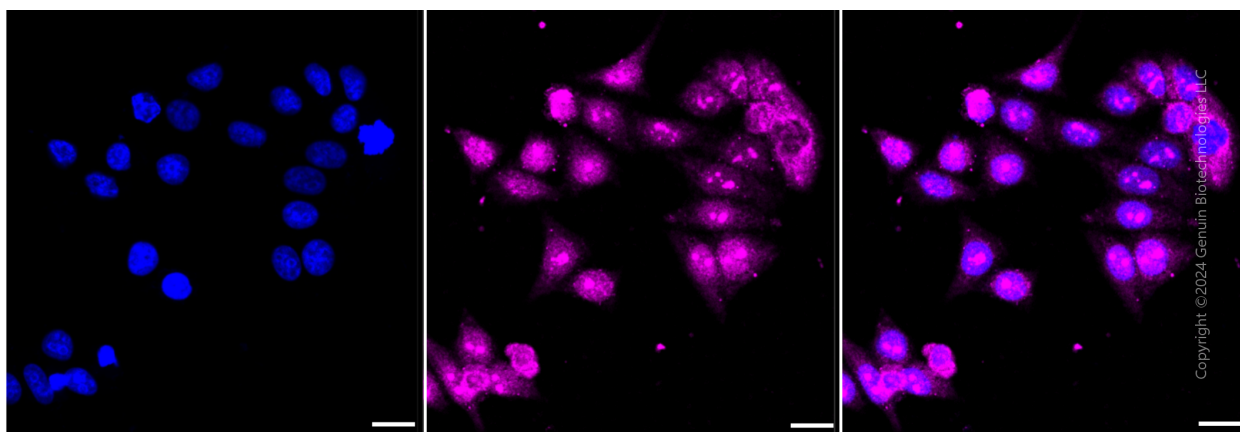
**Note:** This product is for research use only.

## Validation Data



Copyright ©2024 Genuin Biotechnologies LLC

Flow cytometric analysis of SDHB expression in HepG2 cells using anti-SDHB antibody (Cat#2602, 1:2,000). Green, isotype control; red, SDHB.



Copyright ©2024 Genuin Biotechnologies LLC

Immunocytochemical staining of HepG2 cells with anti-SDHB antibody (Cat#2602, 1:1,000). Nuclei were stained blue with DAPI; SDHB was stained magenta with Alexa Fluor® 647. Images were taken using Leica stellaris 5. Protein abundance based on laser Intensity and smart gain: Medium. Scale bar: 20 μm.

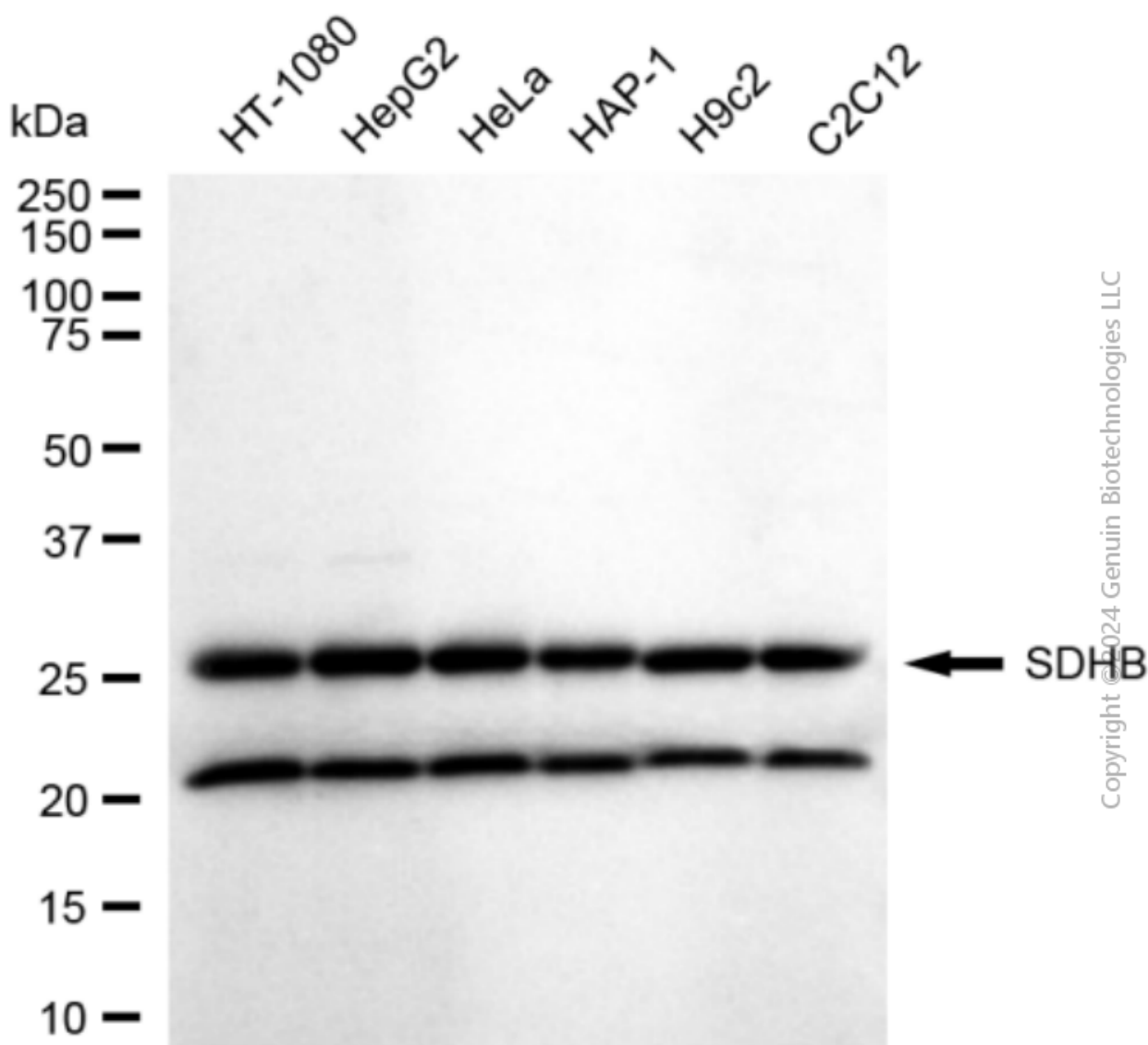
### SUPPORT

SUPPORT@GENUINBIOTECH.COM  
TEL: +1-540-855-7041

### ORDERS

SALES@GENUINBIOTECH.COM  
FAX: +1-540-855-7041

[WWW.GENUINBIOTECH.COM](http://WWW.GENUINBIOTECH.COM)



Western blotting analysis using anti-SDHB antibody (Cat#2602). Total cell lysates (30 µg) from various cell lines were loaded and separated by SDS-PAGE. The blot was incubated with anti-SDHB antibody (Cat#2602, 1:5,000) and HRP-conjugated goat anti-rabbit secondary antibody (Cat#201, 1:20,000) respectively. Image was developed using FeQ™ ECL Substrate Kit (Cat#226).