

Anti-S1PR3 Recombinant Rabbit Monoclonal Antibody



Catalog #: 2603

Aliases

Sphingosine-1-Phosphate Receptor 3; BA791O21.3; C9orf108; C9orf47; EDG-3; EDG3; Endothelial Differentiation, Sphingolipid G-Protein-Coupled Receptor,3; Endothelial Differentiation G-Protein Coupled Receptor 3; Sphingosine 1-Phosphate Receptor Edg-3; Sphingosine 1-Phosphate Receptor 3; S1P Receptor Edg-3; S1P Receptor 3; FLJ37523; S1P3; G Protein-Coupled Receptor, Endothelial Differentiation Gene-3; Chromosome 9 Open Reading Frame 108; Chromosome 9 Open Reading Frame 47; Uncharacterized Protein C9orf47; S1P Receptor EDG3; LPB3

Background

Gene Name: S1PR3

NCBI Gene Entry: [1903](#)

UniProt Entry: [Q99500](#)

Application Information

Molecular Weight: Predicted, 42 kDa; observed, 42 kDa

Clonality: Rabbit monoclonal antibody

Clone ID: 24GB1605

Species Reactivity: Human, mouse, rat

Applications Tested: Western blotting (WB), flow cytometry (FCM), immunocytochemistry (IC)

Immunogen

A synthesized peptide derived from human S1PR3

Isotype

Rabbit IgG

Storage Buffer

Supplied in PBS (pH 7.4) containing 50% glycerol, and 0.02% sodium azide.

Storage

Store at -20 °C for one year.

Recommended Dilutions

Western Blotting (WB): 1:1,000-1:5,000

Flow Cytometry (FCM): 1:2,000

SUPPORT

SUPPORT@GENUINBIOTECH.COM
TEL: +1-540-855-7041

ORDERS

SALES@GENUINBIOTECH.COM
FAX: +1-540-855-7041

WWW.GENUINBIOTECH.COM

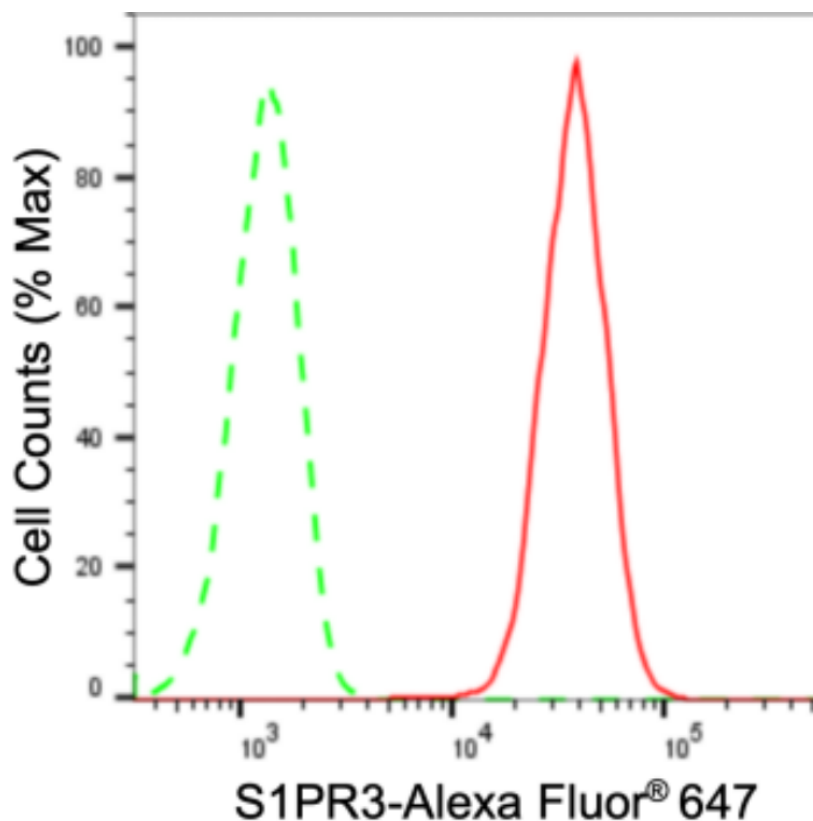
Anti-S1PR3 Recombinant Rabbit Monoclonal Antibody

PAGE 2

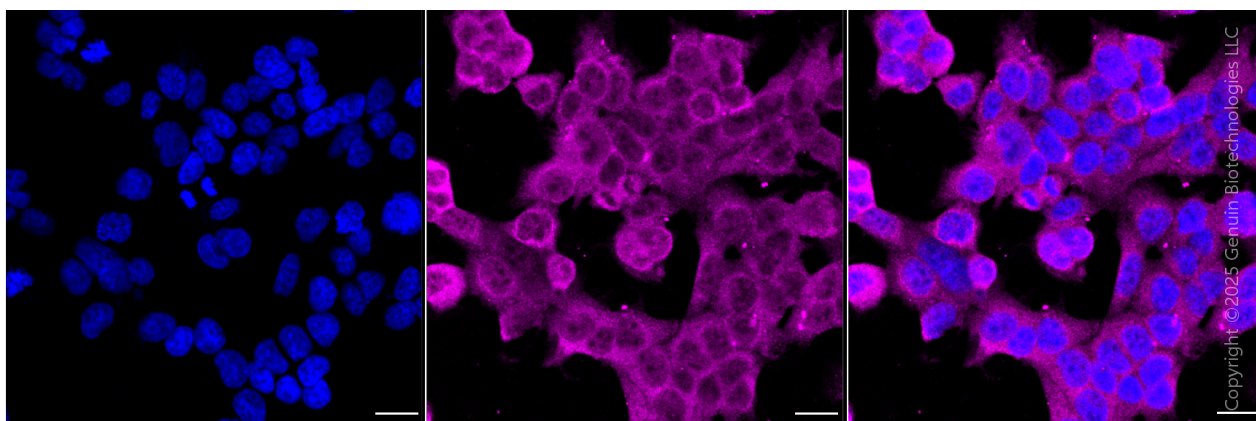
Immunocytochemistry (IC): 1:100-1:1,000

Note: This product is for research use only.

Validation Data



Flow cytometric analysis of S1PR3 expression in HAP-1 cells using anti-S1PR3 antibody (Cat#2603, 1:2,000). Green, isotype control; red, S1PR3.



Immunocytochemical staining of HAP1 cells with anti-S1PR3 antibody (Cat#2603, 1:1,000). Nuclei were stained blue with DAPI; S1PR3 was stained magenta with Alexa Fluor® 647. Images were taken using Leica stellaris 5. Protein abundance based on laser Intensity and smart gain:

SUPPORT

SUPPORT@GENUINBIOTECH.COM
TEL: +1-540-855-7041

ORDERS

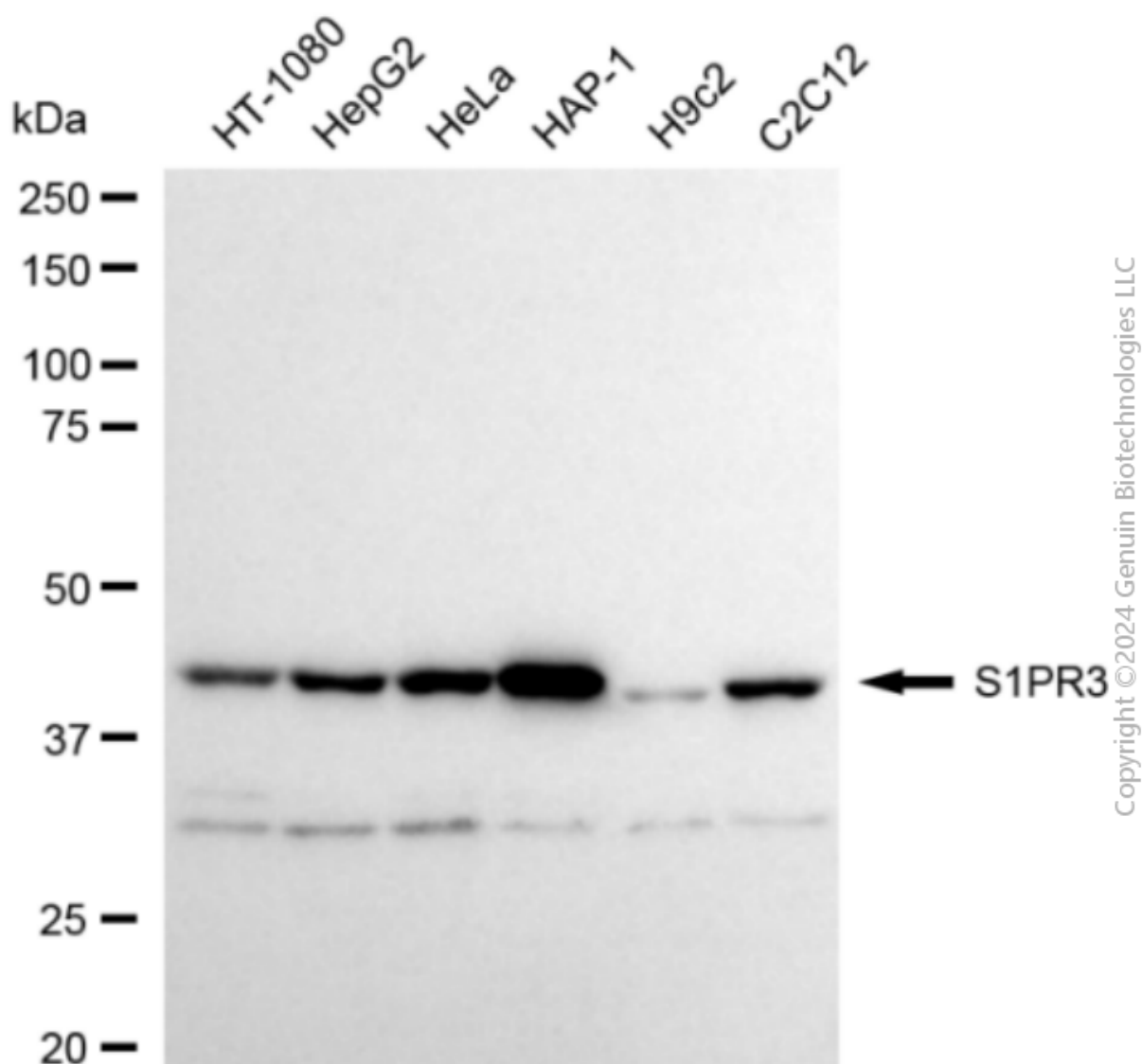
SALES@GENUINBIOTECH.COM
FAX: +1-540-855-7041

WWW.GENUINBIOTECH.COM

Anti-S1PR3 Recombinant Rabbit Monoclonal Antibody

PAGE 3

Medium. Scale bar, 20 μ m.



Western blotting analysis using anti-S1PR3 antibody (Cat#2603). Total cell lysates (30 μ g) from various cell lines were loaded and separated by SDS-PAGE. The blot was incubated with anti-S1PR3 antibody (Cat#2603, 1:5,000) and HRP-conjugated goat anti-rabbit secondary antibody (Cat#201, 1:20,000) respectively. Image was developed using FeQ™ ECL Substrate Kit (Cat#226).

SUPPORT

SUPPORT@GENUINBIOTECH.COM
TEL: +1-540-855-7041

ORDERS

SALES@GENUINBIOTECH.COM
FAX: +1-540-855-7041

WWW.GENUINBIOTECH.COM