

# Anti-PIM2 Recombinant Rabbit Monoclonal Antibody



**Catalog #: 2607**

## Aliases

Pim-2 Proto-Oncogene, Serine/Threonine Kinase; Serine/Threonine-Protein Kinase Pim-2; Pim-2 Oncogene; EC 2.7.11.1; Pim-2h; Proto-Oncogene Pim-2 (Serine Threonine Kinase)

## Background

Gene Name: PIM2

NCBI Gene Entry: [11040](#)

UniProt Entry: [Q9P1W9](#)

## Application Information

Molecular Weight: Predicted, 34 kDa; observed, 37 kDa

Clonality: Rabbit monoclonal antibody

Clone ID: 24GB1625

Species Reactivity: Human

Applications Tested: Western blotting (WB), flow cytometry (FCM), immunocytochemistry (IC)

## Immunogen

A synthesized peptide derived from human PIM2

## Isotype

Rabbit IgG

## Storage Buffer

Supplied in PBS (pH 7.4) containing 50% glycerol, and 0.02% sodium azide.

## Storage

Store at -20 °C for one year.

## Recommended Dilutions

Western Blotting (WB): 1:1,000-1:5,000

Flow Cytometry (FCM): 1:2,000

Immunocytochemistry (IC): 1:100-1:1,000

**Note:** This product is for research use only.

## Validation Data

---

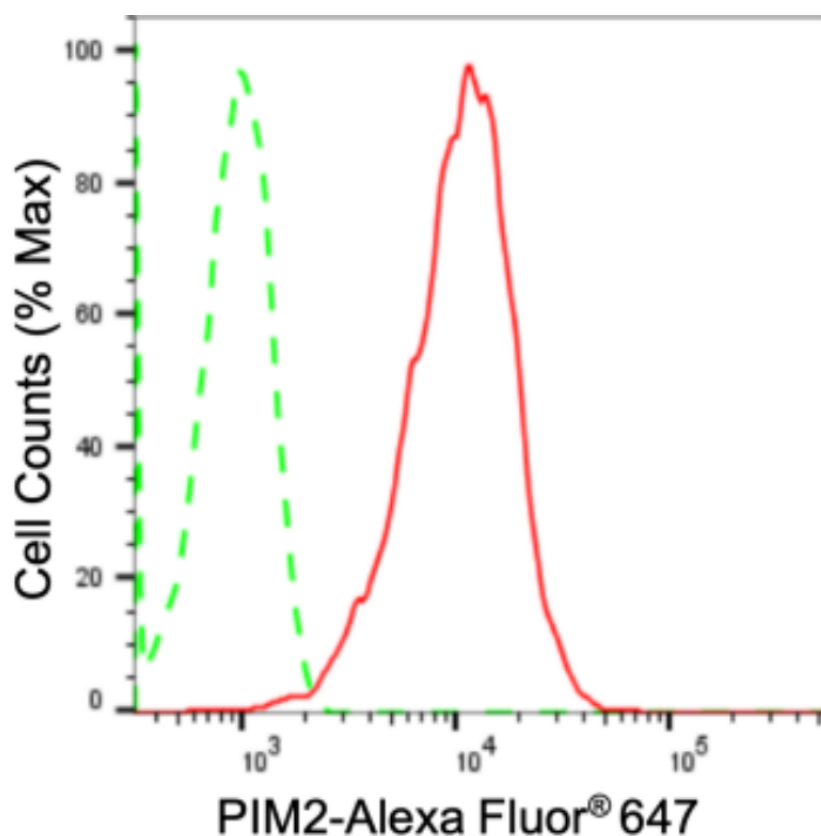
### SUPPORT

SUPPORT@GENUINBIOTECH.COM  
TEL: +1-540-855-7041

### ORDERS

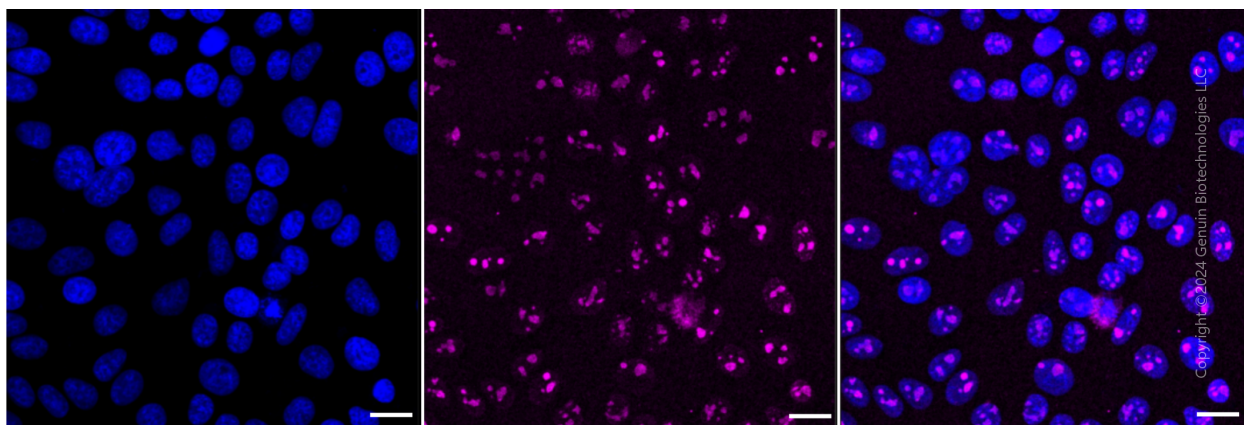
SALES@GENUINBIOTECH.COM  
FAX: +1-540-855-7041

[WWW.GENUINBIOTECH.COM](http://WWW.GENUINBIOTECH.COM)



Copyright ©2024 Genuin Biotechnologies LLC

Flow cytometric analysis of PIM2 expression in HepG2 cells using anti-PIM2 antibody (Cat#2607, 1:2,000). Green, isotype control; red, PIM2.



Copyright ©2024 Genuin Biotechnologies LLC

Immunocytochemical staining of HepG2 cells with anti-PIM2 antibody (Cat#2607, 1:1,000). Nuclei were stained blue with DAPI; PIM2 was stained magenta with Alexa Fluor® 647. Images were taken using Leica stellaris 5. Protein abundance based on laser Intensity and smart gain: Medium. Scale bar: 20 µm.

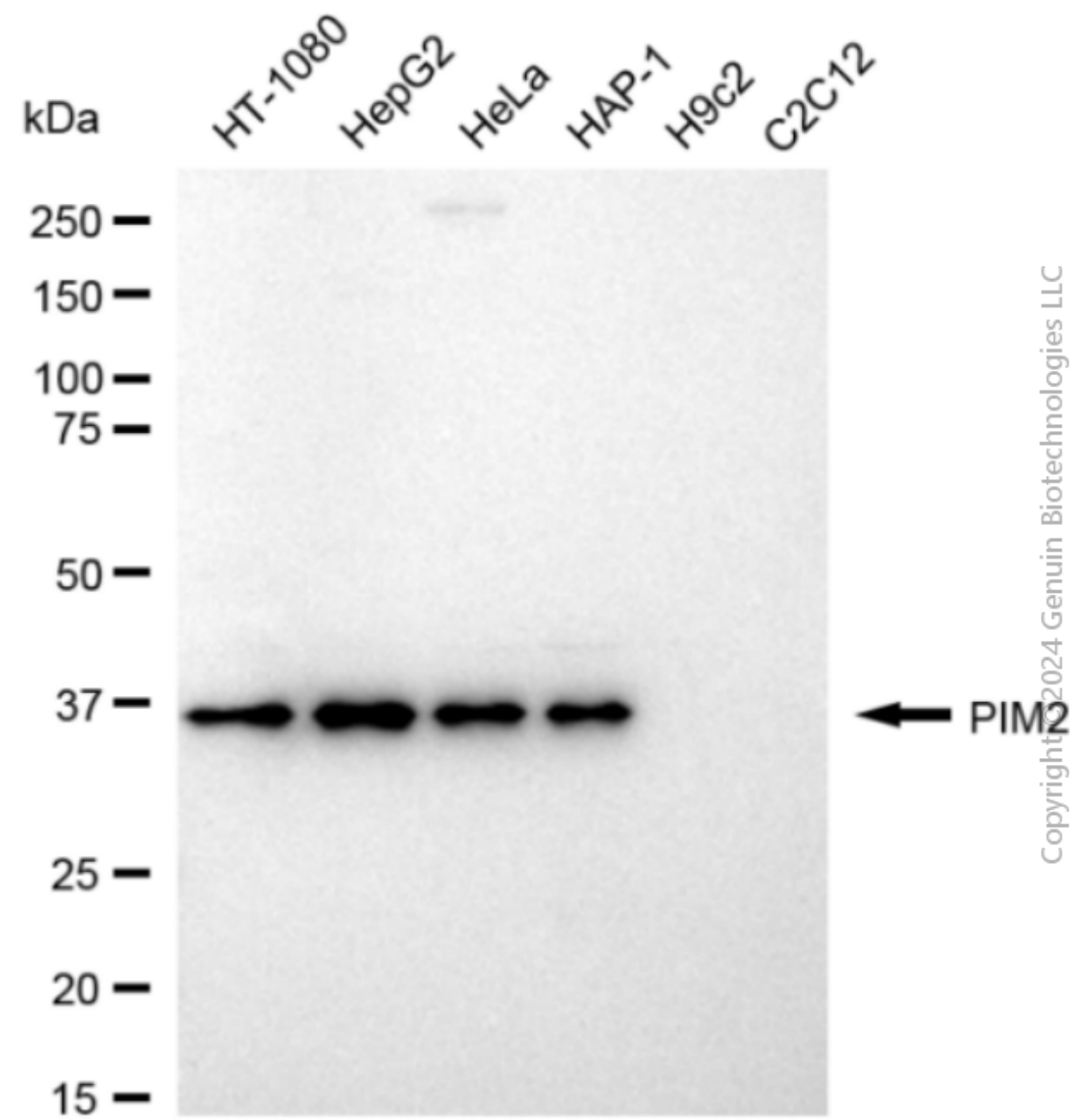
### SUPPORT

SUPPORT@GENUINBIOTECH.COM  
TEL: +1-540-855-7041

### ORDERS

SALES@GENUINBIOTECH.COM  
FAX: +1-540-855-7041

WWW.GENUINBIOTECH.COM



Western blotting analysis using anti-PIM2 antibody (Cat#2607). Total cell lysates (30 µg) from various cell lines were loaded and separated by SDS-PAGE. The blot was incubated with anti-PIM2 antibody (Cat#2607, 1:5,000) and HRP-conjugated goat anti-rabbit secondary antibody (Cat#201, 1:20,000) respectively. Image was developed using FeQ™ ECL Substrate Kit (Cat#226).