

Anti-PPP1CB Recombinant Rabbit Monoclonal Antibody



Catalog #: 2612

Aliases

Protein Phosphatase 1 Catalytic Subunit Beta; PP-1B; PPP1beta; PP1beta; PP1B; PP1c; MP; Serine/Threonine-Protein Phosphatase PP1-Beta Catalytic Subunit; Protein Phosphatase 1, Catalytic Subunit, Beta Isozyme; Myosin Phosphatase; EC 3.1.3.16; PPP1CD; Protein Phosphatase 1, Catalytic Subunit, Beta Isoform; Epididymis Secretory Sperm Binding Protein Li 80p; Protein Phosphatase 1-Delta; Protein Phosphatase 1-Beta; EC 3.1.3.53; HEL-S-80p; NSLH2

Background

Gene Name: PPP1CB

NCBI Gene Entry: [5500](#)

UniProt Entry: [P62140](#)

Application Information

Molecular Weight: Predicted, 37 kDa; observed, 35 kDa

Clonality: Rabbit monoclonal antibody

Clone ID: 24GB1645

Species Reactivity: Human, mouse, rat

Applications Tested: Western blotting (WB), flow cytometry (FCM), immunocytochemistry (IC)

Immunogen

A synthesized peptide derived from human Protein Phosphatase 1 beta

Isotype

Rabbit IgG

Storage Buffer

Supplied in PBS (pH 7.4) containing 50% glycerol, and 0.02% sodium azide.

Storage

Store at -20 °C for one year.

Recommended Dilutions

Western Blotting (WB): 1:1,000-1:5,000

Flow Cytometry (FCM): 1:2,000

Immunocytochemistry (IC): 1:100-1:1,000

SUPPORT

SUPPORT@GENUINBIOTECH.COM
TEL: +1-540-855-7041

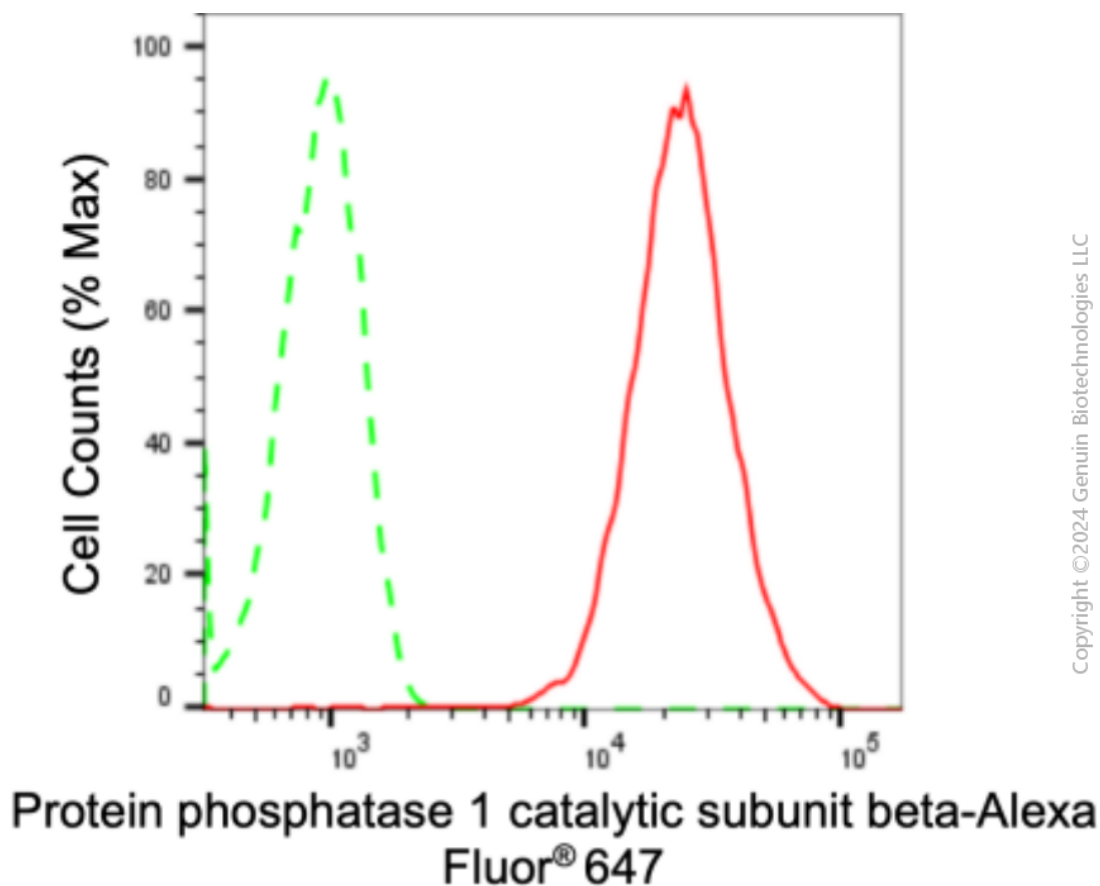
ORDERS

SALES@GENUINBIOTECH.COM
FAX: +1-540-855-7041

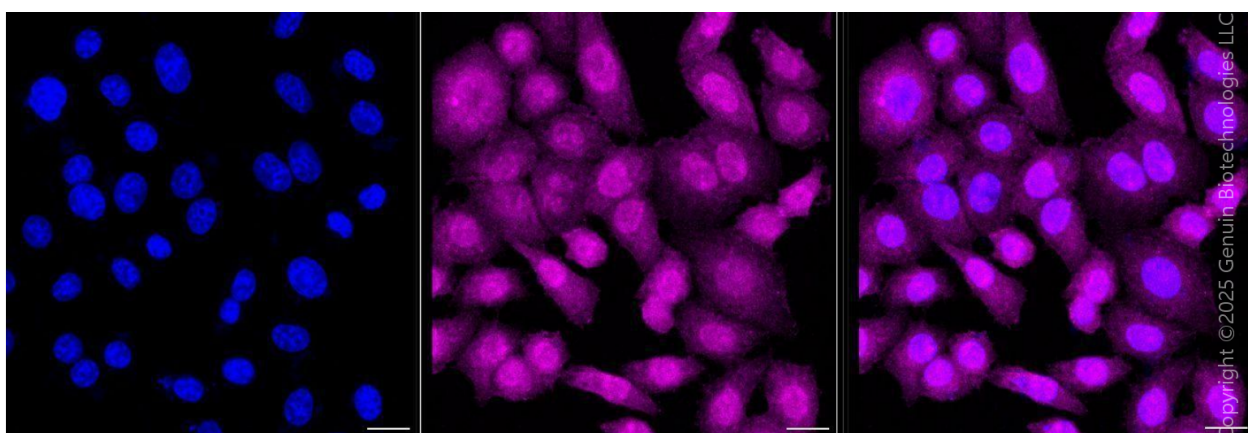
WWW.GENUINBIOTECH.COM

Note: This product is for research use only.

Validation Data



Flow cytometric analysis of Protein phosphatase 1 catalytic subunit beta expression in HepG2 cells using anti-Protein phosphatase 1 catalytic subunit beta antibody (Cat#2612, 1:2,000). Green, isotype control; red, Protein phosphatase 1 catalytic subunit beta.



Immunocytochemical staining of HepG2 cells with anti-Protein phosphatase 1 catalytic subunit beta antibody (Cat#2612, 1:1,000). Nuclei were stained blue with DAPI; Protein phosphatase 1

SUPPORT

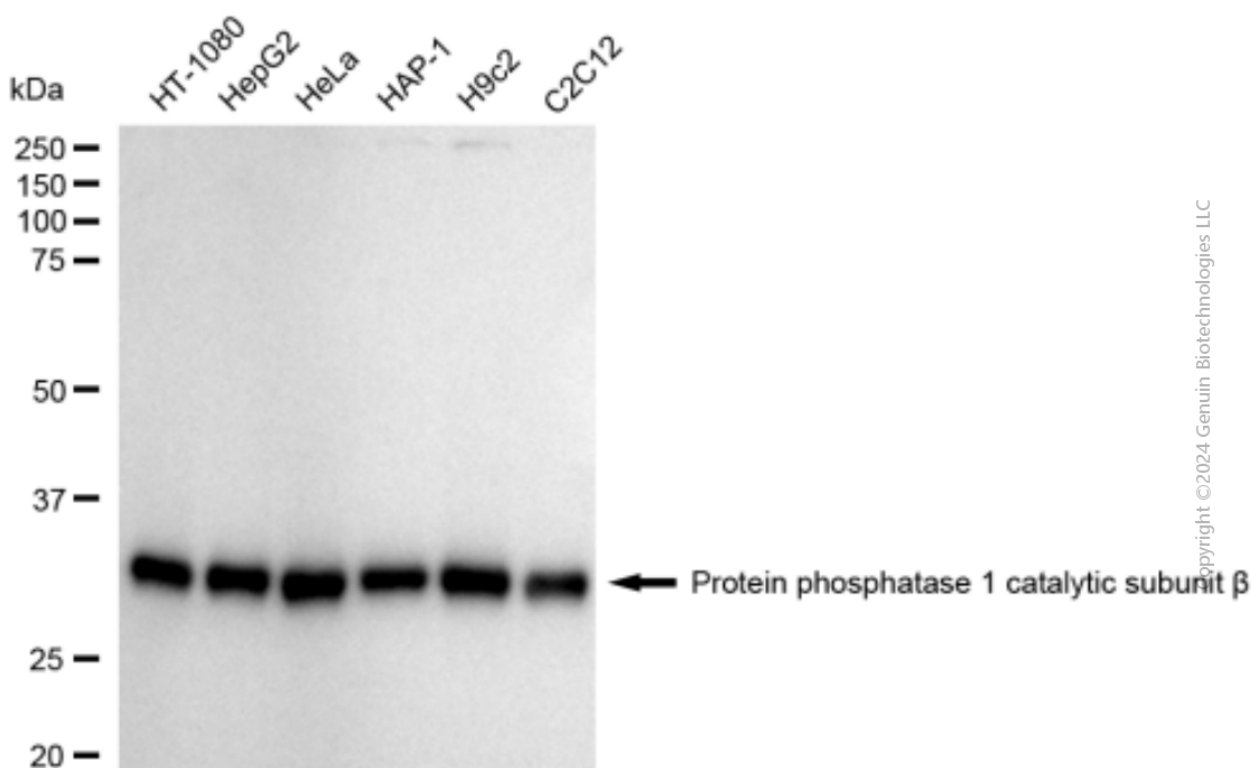
SUPPORT@GENUINBIOTECH.COM
TEL: +1-540-855-7041

ORDERS

SALES@GENUINBIOTECH.COM
FAX: +1-540-855-7041

WWW.GENUINBIOTECH.COM

catalytic subunit beta was stained magenta with Alexa Fluor® 647. Images were taken using Leica stellaris 5. Protein abundance based on laser Intensity and smart gain: Medium. Scale bar, 20 μ m.



Western blotting analysis using anti-Protein phosphatase 1 catalytic subunit beta antibody (Cat#2612). Total cell lysates (5 μ g) from various cell lines were loaded and separated by SDS-PAGE. The blot was incubated with anti-Protein phosphatase 1 catalytic subunit beta antibody (Cat#2612, 1:5,000) and HRP-conjugated goat anti-rabbit secondary antibody (Cat#201, 1:20,000) respectively. Image was developed using FeQ™ ECL Substrate Kit (Cat#226).