

# Anti-Phospho-Protein Kinase D2 (S876) Recombinant Rabbit Monoclonal Antibody



**Catalog #: 2617**

## Aliases

Protein Kinase D2; PKD2; HSPC187; Serine/Threonine-Protein Kinase D2; DKFZP586E0820; EC 2.7.11.13; NPKC-D2; EC 2.7.11

## Background

Gene Name: PRKD2

NCBI Gene Entry: [25865](#)

UniProt Entry: [Q9BZL6](#)

## Application Information

Molecular Weight: Predicted, 97 kDa; observed, 105 kDa

Clonality: Rabbit monoclonal antibody

Clone ID: 24GB1655

Species Reactivity: Human

Applications Tested: Western blotting (WB), flow cytometry (FCM), immunocytochemistry (IC)

## Immunogen

A synthesized peptide derived from human Phospho-Protein Kinase D2 (S876)

## Isotype

Rabbit IgG

## Storage Buffer

Supplied in PBS (pH 7.4) containing 50% glycerol, and 0.02% sodium azide.

## Storage

Store at -20 °C for one year.

## Recommended Dilutions

Western Blotting (WB): 1:1,000-1:5,000

Flow Cytometry (FCM): 1:2,000

Immunocytochemistry (IC): 1:100-1:1,000

**Note:** This product is for research use only.

## Validation Data

---

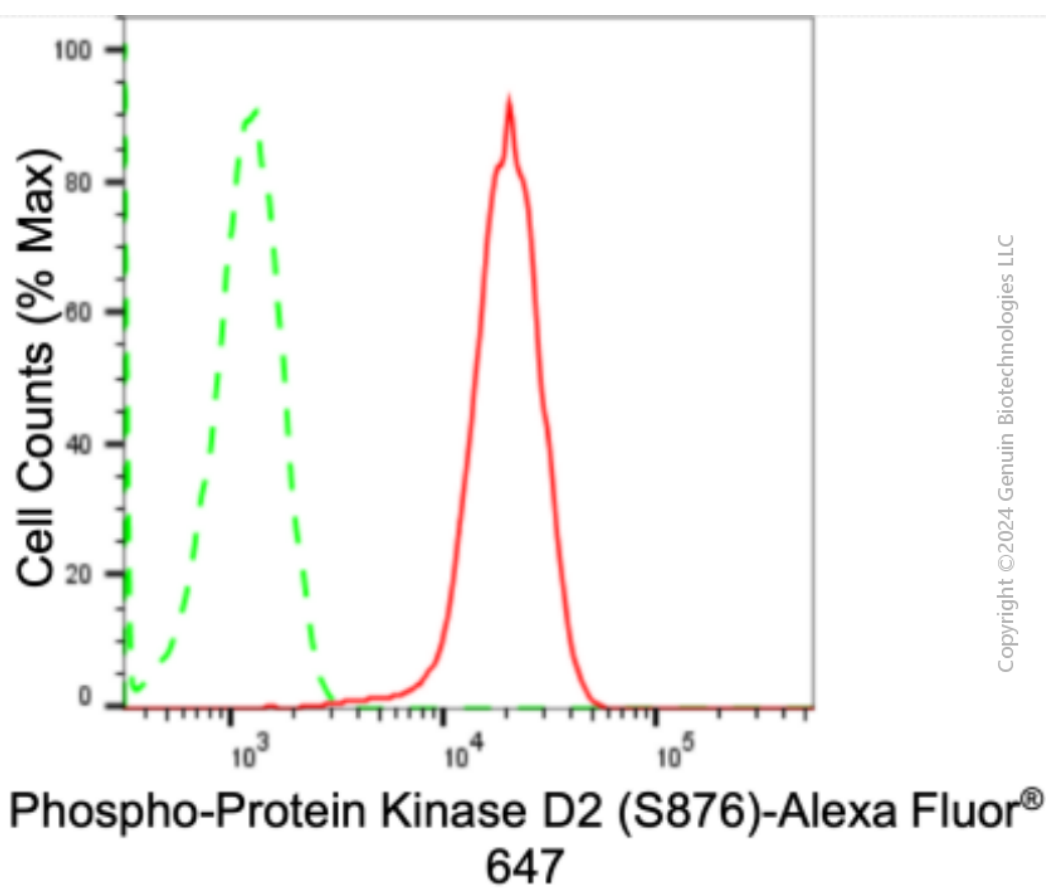
### SUPPORT

SUPPORT@GENUINBIOTECH.COM  
TEL: +1-540-855-7041

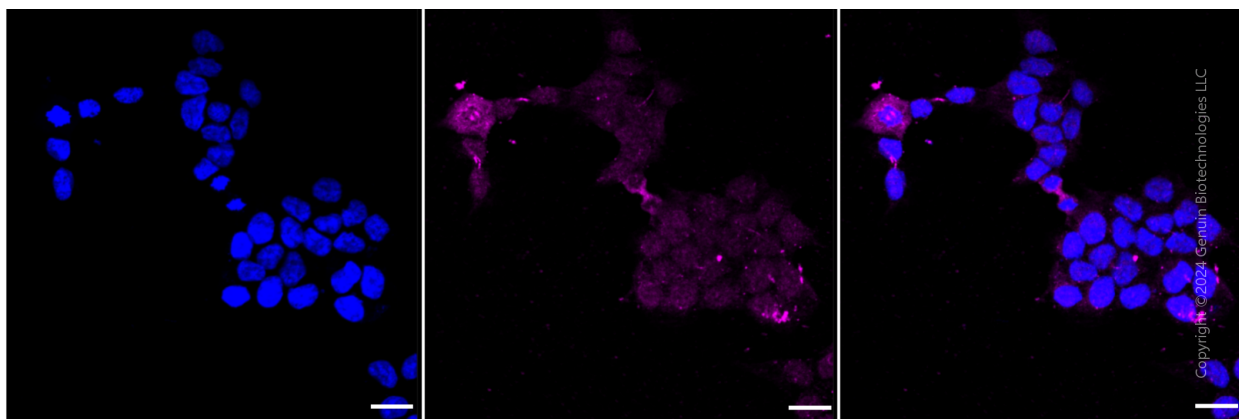
### ORDERS

SALES@GENUINBIOTECH.COM  
FAX: +1-540-855-7041

[WWW.GENUINBIOTECH.COM](http://WWW.GENUINBIOTECH.COM)



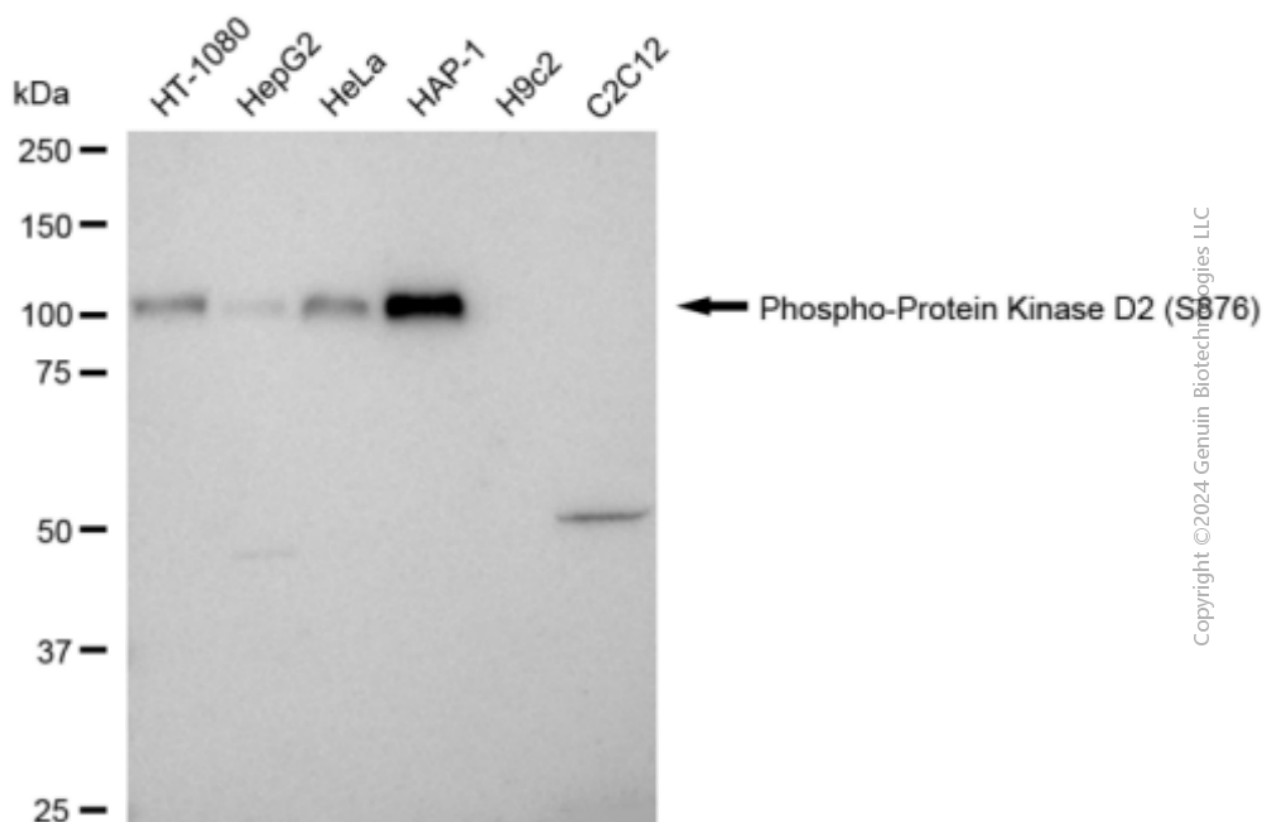
Flow cytometric analysis of Phospho-Protein Kinase D2 (S876) expression in HAP-1 cells using anti-Phospho-Protein Kinase D2 (S876) antibody (Cat#2617, 1:2,000). Green, isotype control; red, Phospho-Protein Kinase D2 (S876).



Immunocytochemical staining of HAP-1 cells with anti-Phospho-Protein Kinase D2 (S876) antibody (Cat#2617, 1:1,000). Nuclei were stained blue with DAPI; Phospho-Protein Kinase D2 (S876) was stained magenta with Alexa Fluor® 647. Images were taken using Leica stellaris 5. Protein abundance based on laser Intensity and smart gain:High . Scale bar: 20  $\mu$ m.

## Anti-Phospho-Protein Kinase D2 (S876) Recombinant Rabbit Monoclonal Antibody

PAGE 3



Western blotting analysis using anti-Phospho-Protein Kinase D2 (S876) antibody (Cat#2617). Total cell lysates (30 µg) from various cell lines were loaded and separated by SDS-PAGE. The blot was incubated with anti-Phospho-Protein Kinase D2 (S876) antibody (Cat#2617, 1:5,000) and HRP-conjugated goat anti-rabbit secondary antibody (Cat#201, 1:20,000) respectively. Image was developed using FeQ™ ECL Substrate Kit (Cat#226).

### SUPPORT

SUPPORT@GENUINBIOTECH.COM  
TEL: +1-540-855-7041

### ORDERS

SALES@GENUINBIOTECH.COM  
FAX: +1-540-855-7041

[WWW.GENUINBIOTECH.COM](http://WWW.GENUINBIOTECH.COM)