

# Anti-PSMD14 Recombinant Rabbit Monoclonal Antibody



## Catalog #: 2618

### Aliases

Proteasome 26S Subunit, Non-ATPase 14; POH1; Rpn11; Pad1; Proteasome (Prosome, Macropain) 26S Subunit, Non-ATPase, 14; 26S Proteasome Non-ATPase Regulatory Subunit 14; 26S Proteasome-Associated PAD1 Homolog 1; Testis Tissue Sperm-Binding Protein Li 69n; 26S Proteasome Regulatory Subunit Rpn11; 26S Proteasome Regulatory Subunit RPN11; EC 3.4.19.-; EC 3.1.2.15

### Background

Gene Name: PSMD14

NCBI Gene Entry: [10213](#)

UniProt Entry: [O00487](#)

### Application Information

Molecular Weight: Predicted, 35 kDa; observed, 35 kDa

Clonality: Rabbit monoclonal antibody

Clone ID: 24GB1660

Species Reactivity: Human, mouse, rat

Applications Tested: Western blotting (WB), flow cytometry (FCM)

### Immunogen

A synthesized peptide derived from human PSMD14

### Isotype

Rabbit IgG

### Storage Buffer

Supplied in PBS (pH 7.4) containing 50% glycerol, and 0.02% sodium azide.

### Storage

Store at -20 °C for one year.

### Recommended Dilutions

Western Blotting (WB): 1:1,000-1:5,000

Flow Cytometry (FCM): 1:2,000

---

#### SUPPORT

SUPPORT@GENUINBIOTECH.COM  
TEL: +1-540-855-7041

#### ORDERS

SALES@GENUINBIOTECH.COM  
FAX: +1-540-855-7041

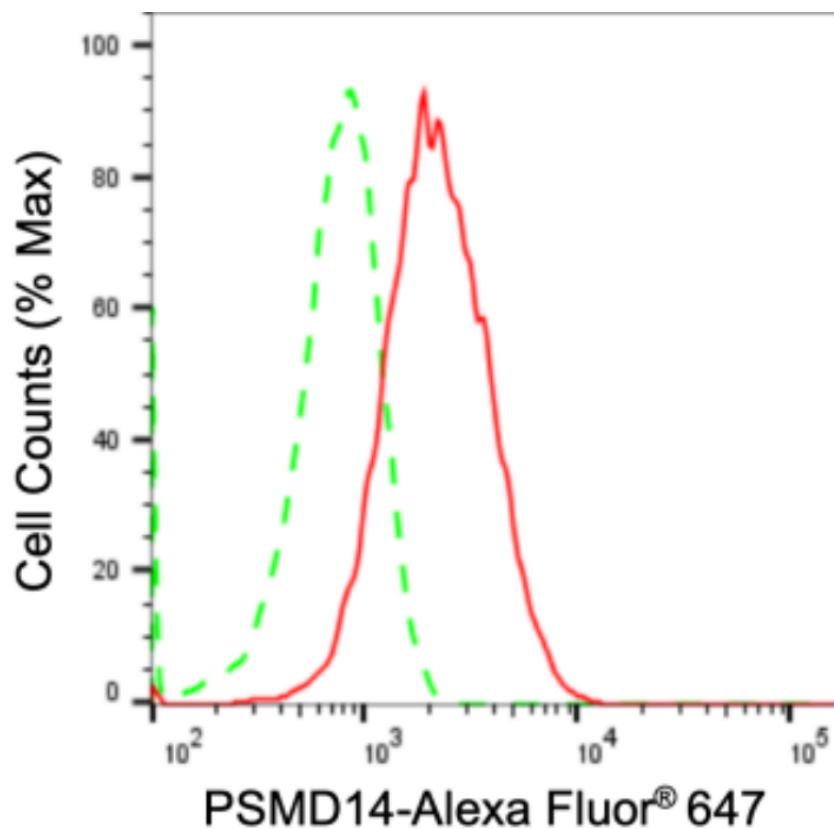
[WWW.GENUINBIOTECH.COM](http://WWW.GENUINBIOTECH.COM)

# Anti-PSMD14 Recombinant Rabbit Monoclonal Antibody

PAGE 2

**Note:** This product is for research use only.

## Validation Data



Copyright ©2024 Genuin Biotechnologies LLC

Flow cytometric analysis of PSMD14 expression in C2C12 cells using anti-PSMD14 antibody (Cat#2618, 1:2,000). Green, isotype control; red, PSMD14.

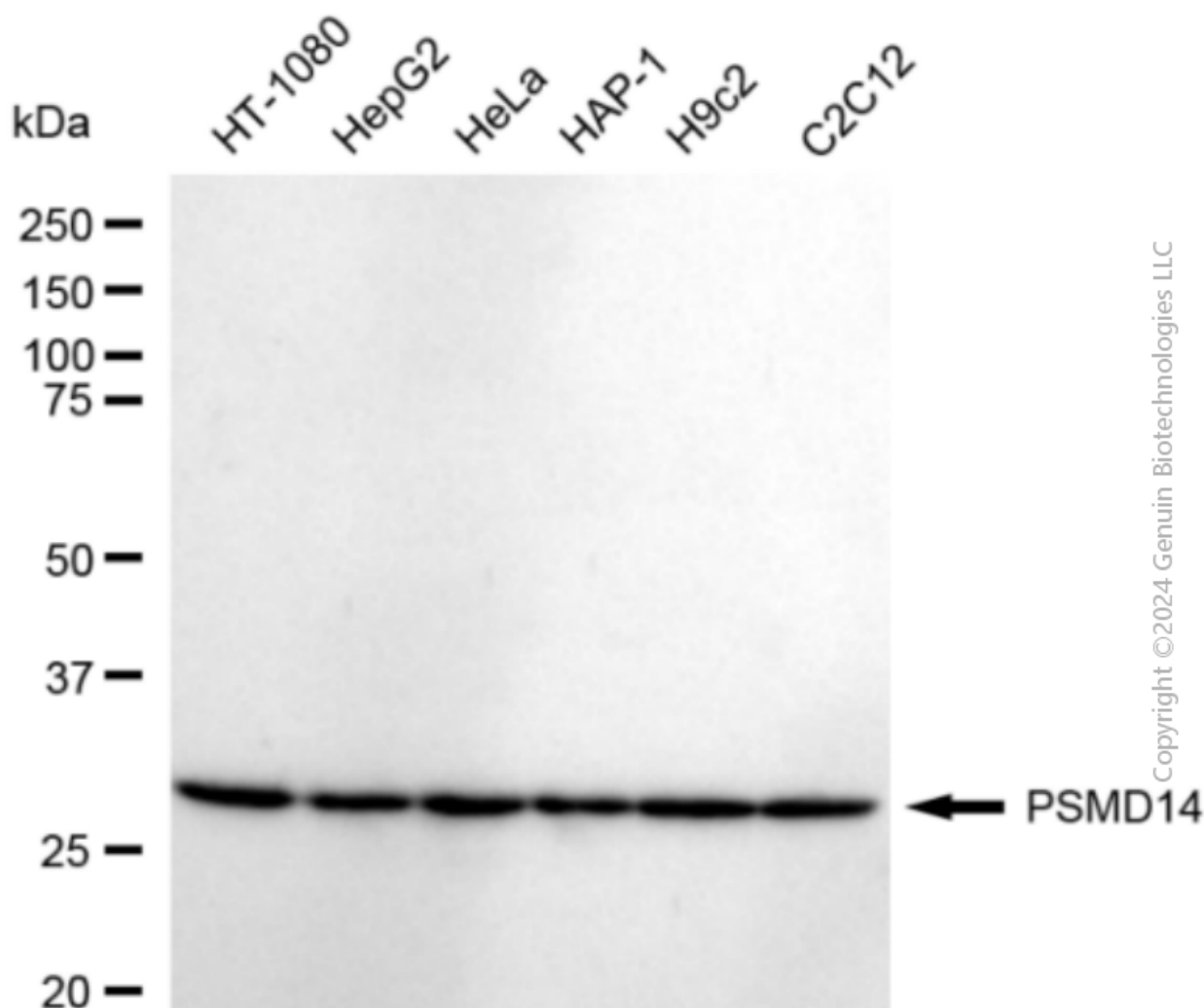
### SUPPORT

SUPPORT@GENUINBIOTECH.COM  
TEL: +1-540-855-7041

### ORDERS

SALES@GENUINBIOTECH.COM  
FAX: +1-540-855-7041

[WWW.GENUINBIOTECH.COM](http://WWW.GENUINBIOTECH.COM)



Western blotting analysis using anti-PSMD14 antibody (Cat#2618). Total cell lysates (30  $\mu$ g) from various cell lines were loaded and separated by SDS-PAGE. The blot was incubated with anti-PSMD14 antibody (Cat#2618, 1:5,000) and HRP-conjugated goat anti-rabbit secondary antibody (Cat#201, 1:20,000) respectively. Image was developed using FeQ™ ECL Substrate Kit (Cat#226).