

Anti-PSMA3 Recombinant Rabbit Monoclonal Antibody



Catalog #: 2619

Aliases

Proteasome 20S Subunit Alpha 3; HC8; Proteasome (Prosome, Macropain) Subunit, Alpha Type, 3; Multicatalytic Endopeptidase Complex Subunit C8; Proteasome Subunit Alpha Type-3; Proteasome Subunit Alpha 3; Proteasome Component C8; Macropain Subunit C8; Testicular Secretory Protein Li 43; Proteasome Subunit Alpha7; Proteasome Subunit A7; Proteasome Subunit C8; EC 3.4.25.1; PSC3; PSC8

Background

Gene Name: PSMA3

NCBI Gene Entry: [5684](#)

UniProt Entry: [P25788](#)

Application Information

Molecular Weight: Predicted, 28 kDa; observed, 28 kDa

Clonality: Rabbit monoclonal antibody

Clone ID: 24GB1665

Species Reactivity: Human, mouse, rat

Applications Tested: Western blotting (WB), flow cytometry (FCM), immunocytochemistry (IC)

Immunogen

A synthesized peptide derived from human PSMA3

Isotype

Rabbit IgG

Storage Buffer

Supplied in PBS (pH 7.4) containing 50% glycerol, and 0.02% sodium azide.

Storage

Store at -20 °C for one year.

Recommended Dilutions

Western Blotting (WB): 1:1,000-1:5,000

Flow Cytometry (FCM): 1:2,000

Immunocytochemistry (IC): 1:100-1:1,000

SUPPORT

SUPPORT@GENUINBIOTECH.COM
TEL: +1-540-855-7041

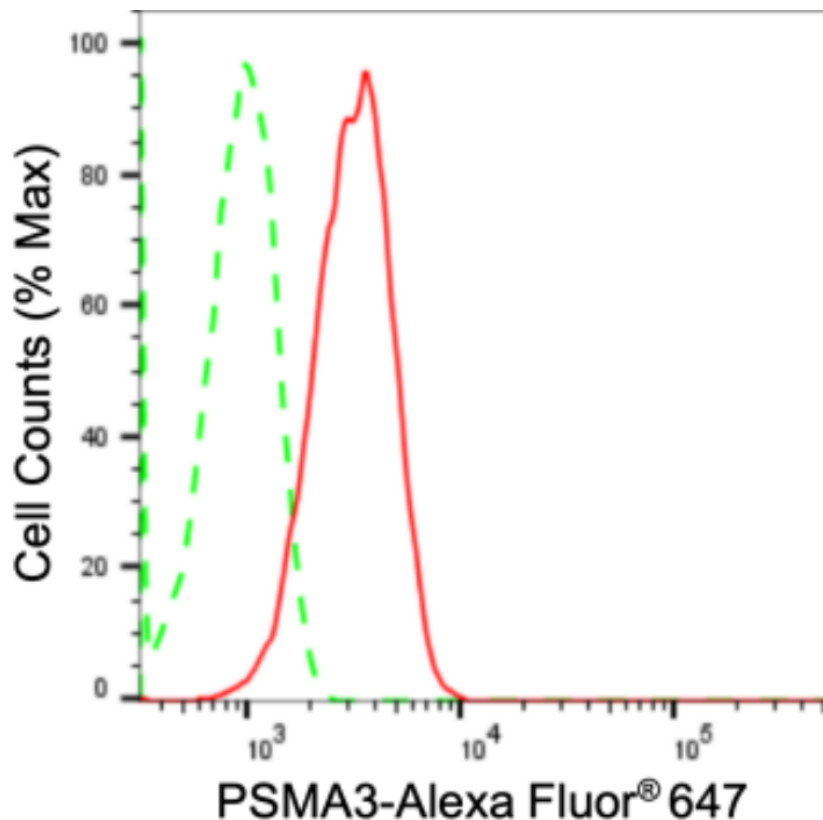
ORDERS

SALES@GENUINBIOTECH.COM
FAX: +1-540-855-7041

WWW.GENUINBIOTECH.COM

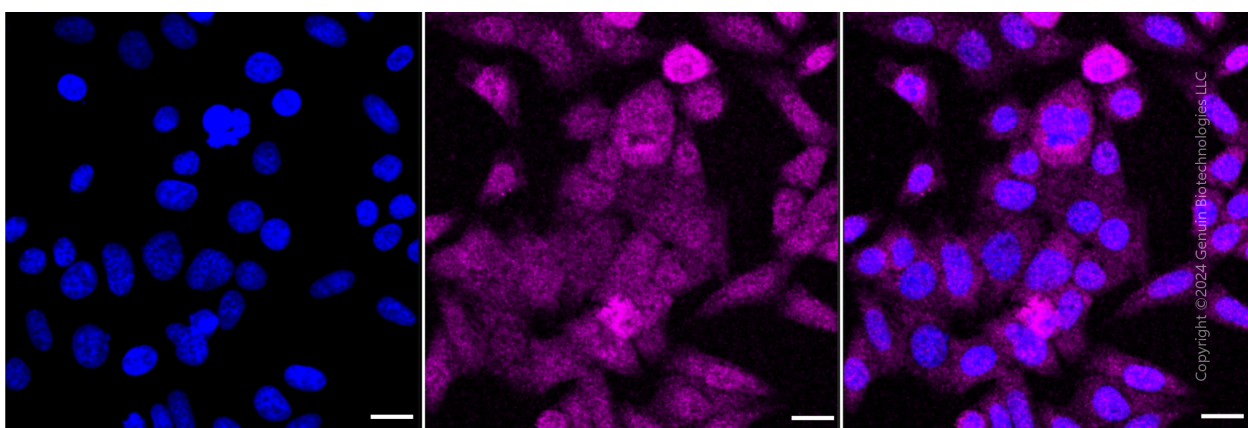
Note: This product is for research use only.

Validation Data



Copyright ©2024 Genuin Biotechnologies LLC

Flow cytometric analysis of PSMA3 expression in HepG2 cells using anti-PSMA3 antibody (Cat#2619, 1:2,000). Green, isotype control; red, PSMA3.



Copyright ©2024 Genuin Biotechnologies LLC

Immunocytochemical staining of HepG2 cells with anti-PSMA3 antibody (Cat#2619, 1:1,000). Nuclei were stained blue with DAPI; PSMA3 was stained magenta with Alexa Fluor® 647. Images were taken using Leica stellaris 5. Protein abundance based on laser Intensity and smart gain: Medium. Scale bar: 20 µm.

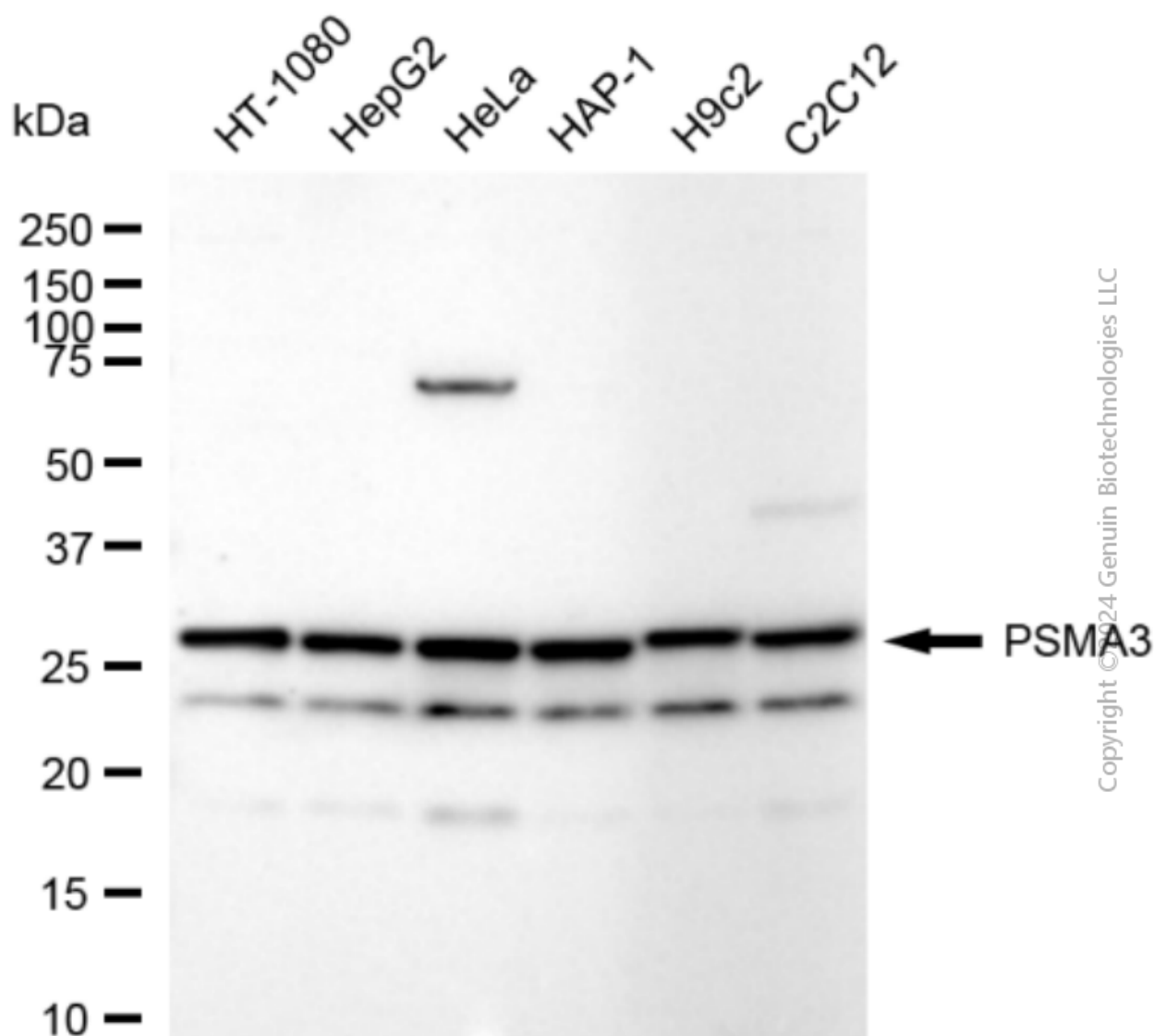
SUPPORT

SUPPORT@GENUINBIOTECH.COM
TEL: +1-540-855-7041

ORDERS

SALES@GENUINBIOTECH.COM
FAX: +1-540-855-7041

WWW.GENUINBIOTECH.COM



Western blotting analysis using anti-PSMA3 antibody (Cat#2619). Total cell lysates (30 μ g) from various cell lines were loaded and separated by SDS-PAGE. The blot was incubated with anti-PSMA3 antibody (Cat#2619, 1:5,000) and HRP-conjugated goat anti-rabbit secondary antibody (Cat#201, 1:20,000) respectively. Image was developed using FeQ™ ECL Substrate Kit (Cat#226).