

Anti-STAT5A/B Recombinant Rabbit Monoclonal Antibody



Catalog #: 2647

Aliases

STAT5A; Signal Transducer And Activator Of Transcription 5A; STAT5; MGF; Epididymis Secretory Sperm Binding Protein; TAT5B; Signal Transducer And Activator Of Transcription 5B; Transcription Factor STAT5B; GHISID2; STAT5

Background

Gene Name: STAT5A/STAT5B

NCBI Gene Entry: [6776/6777](#)

UniProt Entry: [P42229/P51692](#)

Application Information

Molecular Weight: Predicted, 91 kDa; observed, 90 kDa

Clonality: Rabbit monoclonal antibody

Clone ID: 24GB2105

Species Reactivity: Human, mouse, rat

Applications Tested: Western blotting (WB), flow cytometry (FCM), immunocytochemistry (IC)

Immunogen

A synthesized peptide derived from human STAT5A/B

Isotype

Rabbit IgG

Storage Buffer

Supplied in PBS (pH 7.4) containing 50% glycerol, and 0.02% sodium azide.

Storage

Store at -20 °C for one year.

Recommended Dilutions

Western Blotting (WB): 1:1,000-1:5,000

Flow Cytometry (FCM): 1:2,000

Immunocytochemistry (IC): 1:100-1:1,000

Note: This product is for research use only.

SUPPORT

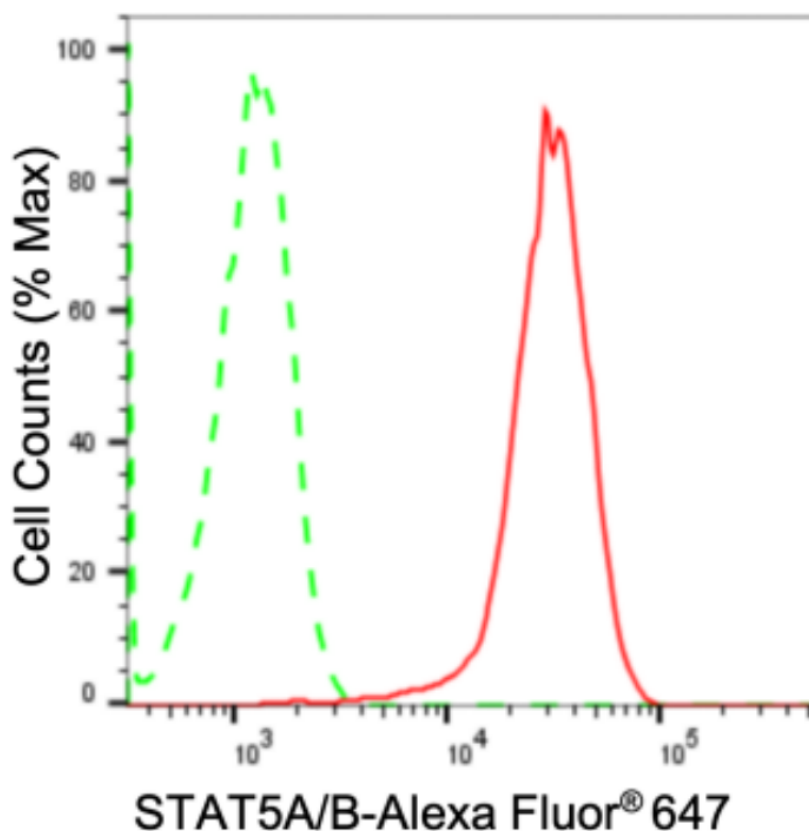
SUPPORT@GENUINBIOTECH.COM
TEL: +1-540-855-7041

ORDERS

SALES@GENUINBIOTECH.COM
FAX: +1-540-855-7041

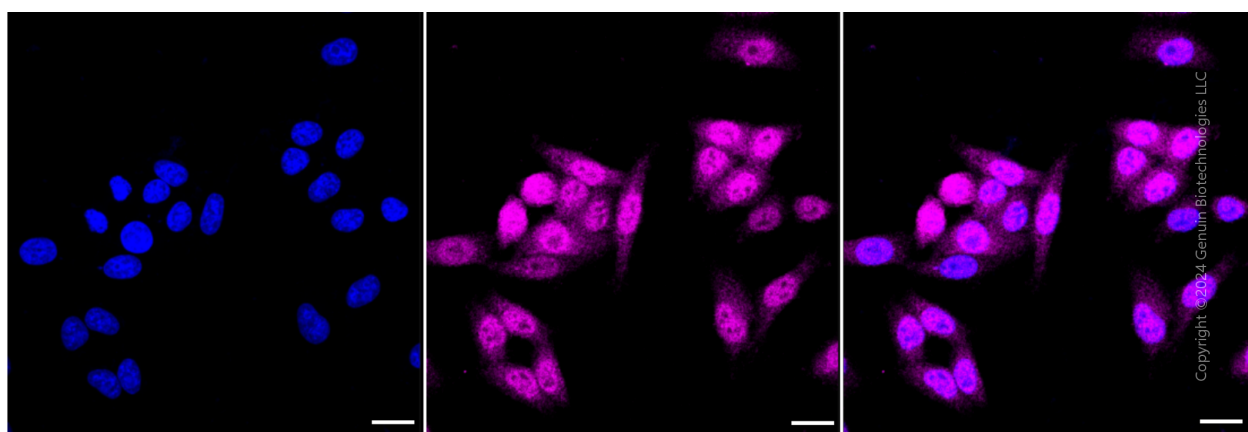
WWW.GENUINBIOTECH.COM

Validation Data



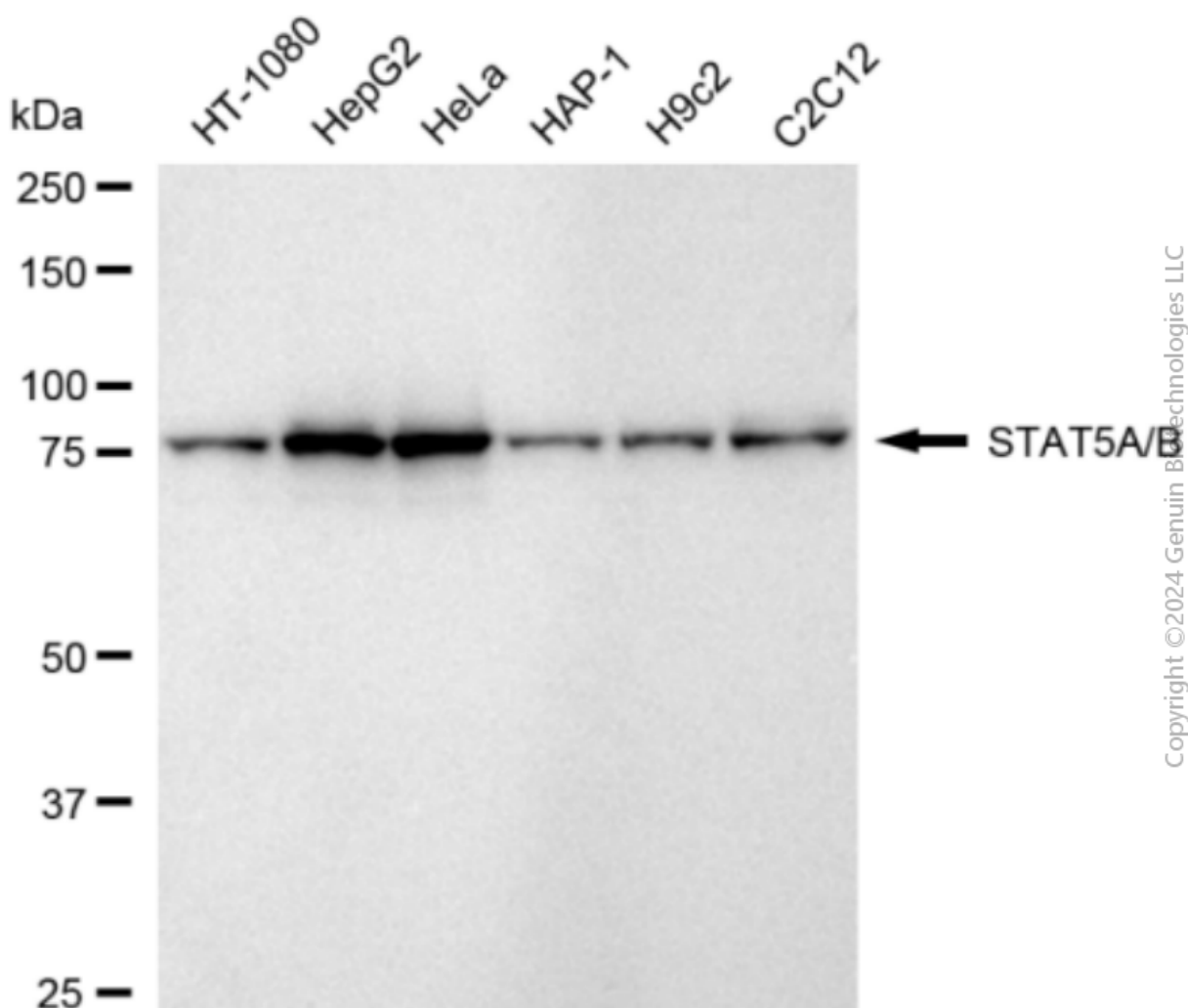
Copyright ©2024 Genuin Biotechnologies LLC

Flow cytometric analysis of STAT5A/B expression in HepG2 cells using anti-STAT5A/B antibody (Cat#2647, 1:2,000). Green, isotype control; red, STAT5A/B.



Copyright ©2024 Genuin Biotechnologies LLC

Immunocytochemical staining of HepG2 cells with anti-STAT5A/B antibody (Cat#2647, 1:1,000). Nuclei were stained blue with DAPI; STAT5A/B was stained magenta with Alexa Fluor® 647. Images were taken using Leica stellaris 5. Protein abundance based on laser Intensity and smart gain: Medium. Scale bar: 20 μ m.



Western blotting analysis using anti-STAT5A/B antibody (Cat#2647). Total cell lysates (30 µg) from various cell lines were loaded and separated by SDS-PAGE. The blot was incubated with anti-STAT5A/B antibody (Cat#2647, 1:5,000) and HRP-conjugated goat anti-rabbit secondary antibody (Cat#201, 1:20,000) respectively. Image was developed using FeQ™ ECL Substrate Kit (Cat#226).