

# Anti-14-3-3 epsilon Recombinant Rabbit Monoclonal Antibody



**Catalog #: 2649**

## Aliases

YWHAE; Tyrosine 3-Monooxygenase/Tryptophan 5-Monooxygenase Activation Protein Epsilon; Tyrosine 3-Monooxygenase/Tryptophan 5-Monooxygenase Activation Protein, Epsilon Polypeptide; 14-3-3 Protein Epsilon; 14-3-3 Epsilon; FLJ45465; 14-3-3E; Tyrosine 3/Tryptophan 5 -Monooxygenase Activation Protein, Epsilon Polypeptide; Mitochondrial Import Stimulation Factor L Subunit; Protein Kinase C Inhibitor Protein-1; Epididymis Luminal Protein; KCIP-1; HEL2; MDCR; MDS

## Background

Gene Name: YWHAE

NCBI Gene Entry: [7531](#)

UniProt Entry: [P62258](#)

## Application Information

Molecular Weight: Predicted, 29 kDa; observed, 29 kDa

Clonality: Rabbit monoclonal antibody

Clone ID: 24GB2120

Species Reactivity: Human, mouse, rat

Applications Tested: Western blotting (WB), flow cytometry (FCM), immunocytochemistry (IC)

## Immunogen

A synthesized peptide derived from human 14-3-3 epsilon

## Isotype

Rabbit IgG

## Storage Buffer

Supplied in PBS (pH 7.4) containing 50% glycerol, and 0.02% sodium azide.

## Storage

Store at -20 °C for one year.

## Recommended Dilutions

Western Blotting (WB): 1:1,000-1:5,000

Flow Cytometry (FCM): 1:2,000

Immunocytochemistry (IC): 1:100-1:1,000

---

### SUPPORT

SUPPORT@GENUINBIOTECH.COM  
TEL: +1-540-855-7041

### ORDERS

SALES@GENUINBIOTECH.COM  
FAX: +1-540-855-7041

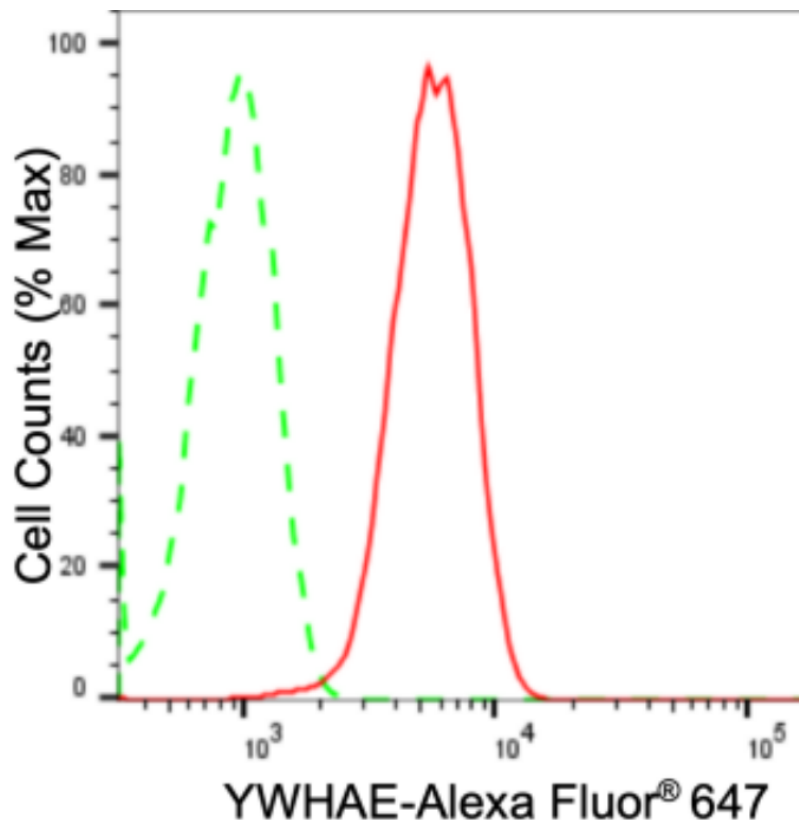
[WWW.GENUINBIOTECH.COM](http://WWW.GENUINBIOTECH.COM)

# Anti-14-3-3 epsilon Recombinant Rabbit Monoclonal Antibody

PAGE 2

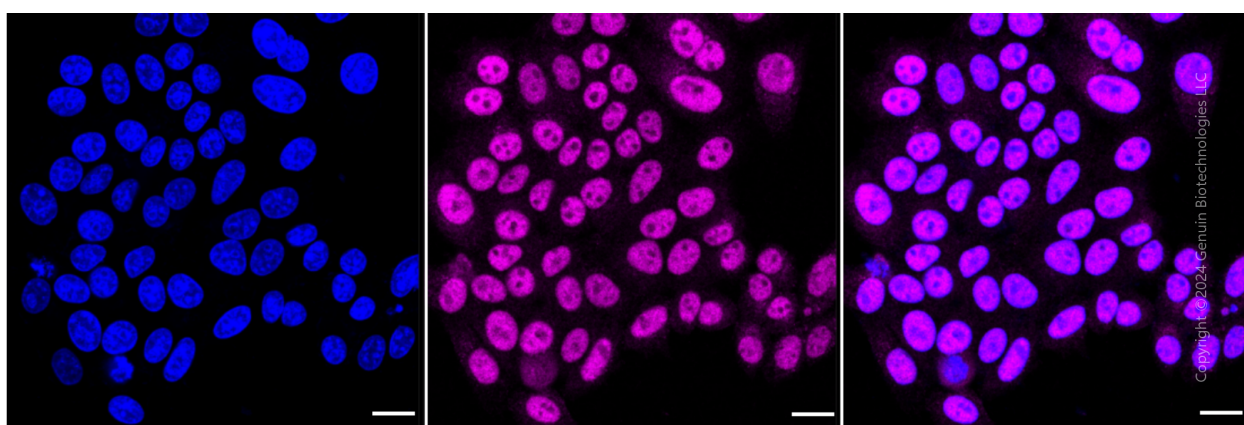
**Note:** This product is for research use only.

## Validation Data



Copyright ©2024 Genuin Biotechnologies LLC

Flow cytometric analysis of YWHAE expression in HepG2 cells using anti-YWHAE antibody (Cat#2649, 1:2,000). Green, isotype control; red, YWHAE.



Copyright ©2024 Genuin Biotechnologies LLC

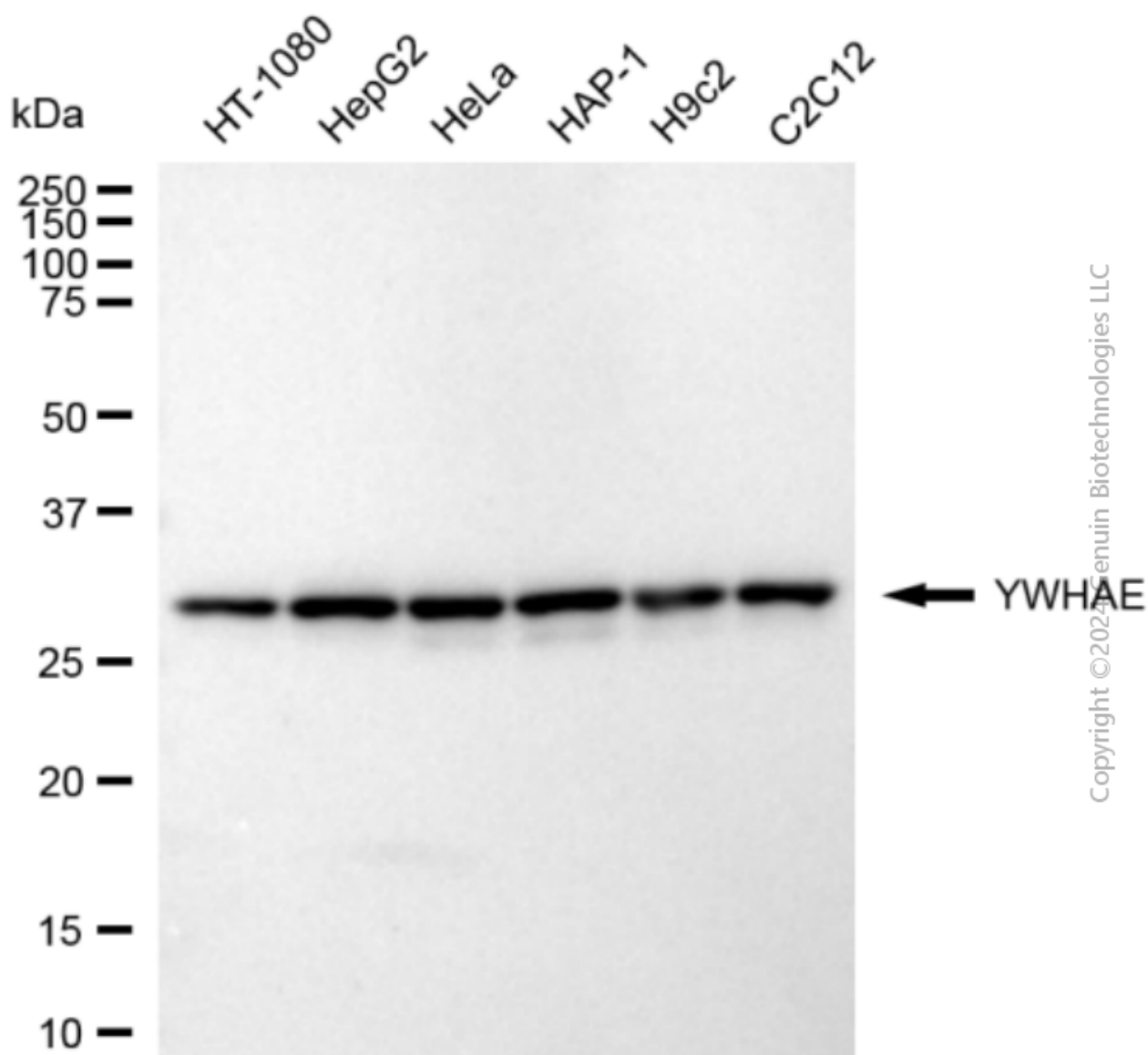
### SUPPORT

SUPPORT@GENUINBIOTECH.COM  
TEL: +1-540-855-7041

### ORDERS

SALES@GENUINBIOTECH.COM  
FAX: +1-540-855-7041

[WWW.GENUINBIOTECH.COM](http://WWW.GENUINBIOTECH.COM)



Western blotting analysis using anti-YWHAE antibody (Cat#2649). Total cell lysates (30 µg) from various cell lines were loaded and separated by SDS-PAGE. The blot was incubated with anti-YWHAE antibody (Cat#2649, 1:5,000) and HRP-conjugated goat anti-rabbit secondary antibody (Cat#201, 1:20,000) respectively. Image was developed using FeQ™ ECL Substrate Kit (Cat#226).