

Anti-Ubiquitin D Recombinant Rabbit Monoclonal Antibody



Catalog #: 2650

Aliases

UBD; Ubiquitin D; FAT10; Ubiquitin-Like Protein FAT10; Diubiquitin; GABBR1; UBD-3

Background

Gene Name: UBD

NCBI Gene Entry: [10537](#)

UniProt Entry: [O15205](#)

Application Information

Molecular Weight: Predicted, 18 kDa; observed, 23 kDa

Clonality: Rabbit monoclonal antibody

Clone ID: 24GB2125

Species Reactivity: Human, mouse

Applications Tested: Western blotting (WB), flow cytometry (FCM), immunocytochemistry (IC)

Immunogen

A synthesized peptide derived from human Ubiquitin D

Isotype

Rabbit IgG

Storage Buffer

Supplied in PBS (pH 7.4) containing 50% glycerol, and 0.02% sodium azide.

Storage

Store at -20 °C for one year.

Recommended Dilutions

Western Blotting (WB): 1:1,000-1:5,000

Flow Cytometry (FCM): 1:2,000

Immunocytochemistry (IC): 1:100-1:1,000

Note: This product is for research use only.

Validation Data

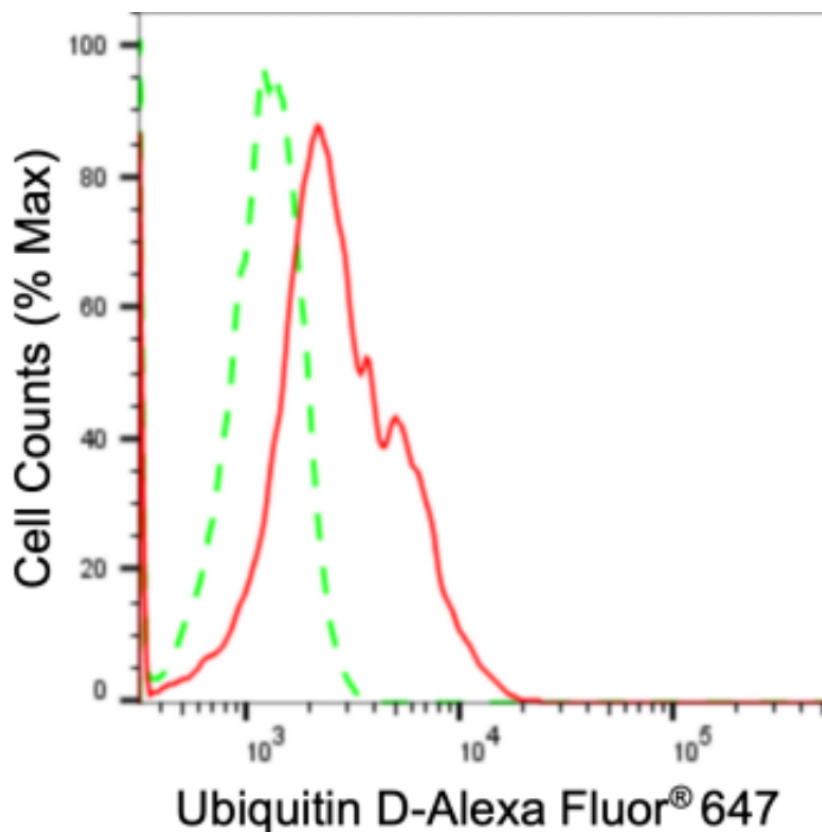
SUPPORT

SUPPORT@GENUINBIOTECH.COM
TEL: +1-540-855-7041

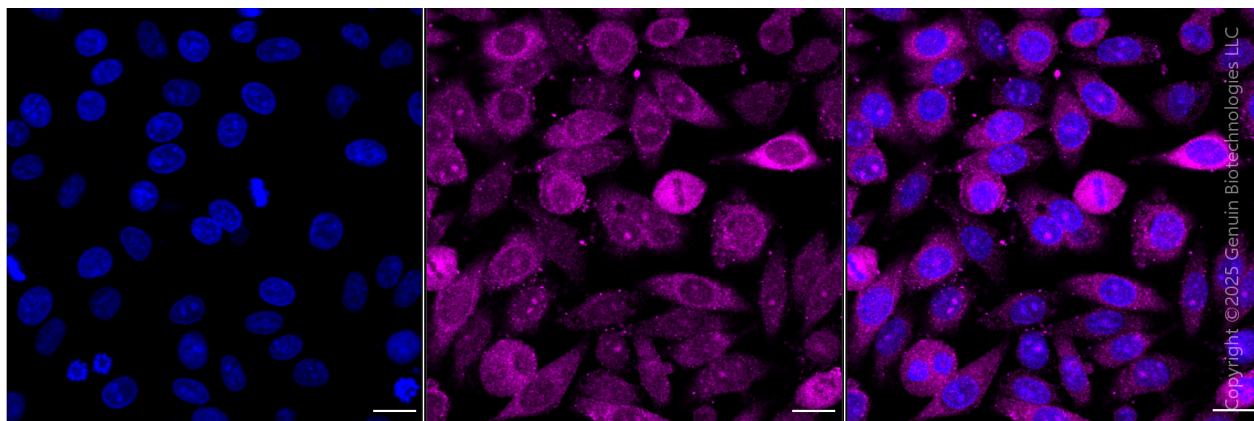
ORDERS

SALES@GENUINBIOTECH.COM
FAX: +1-540-855-7041

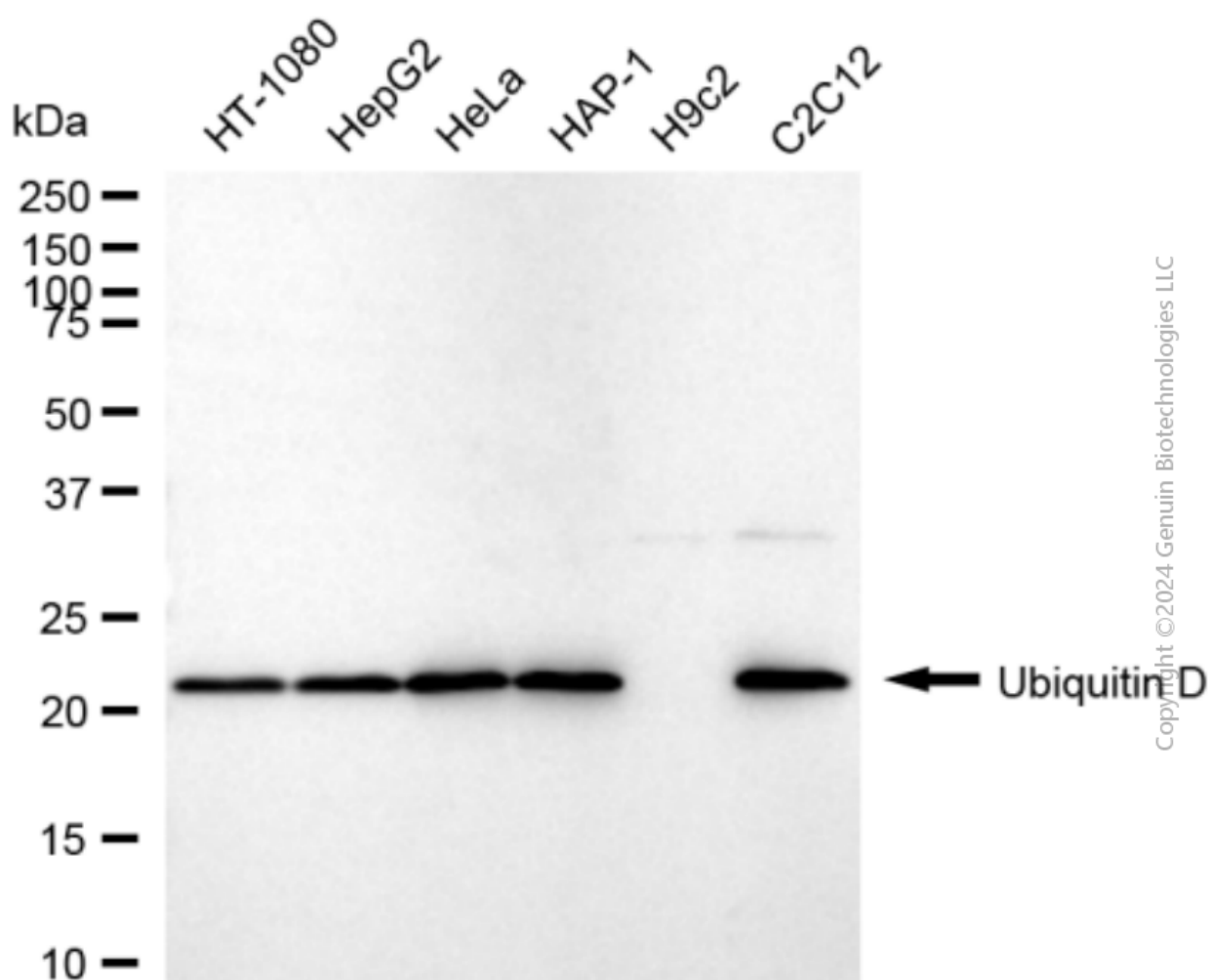
WWW.GENUINBIOTECH.COM



Flow cytometric analysis of Ubiquitin D expression in HepG2 cells using anti-Ubiquitin D antibody (Cat#2650, 1:2,000). Green, isotype control; red, Ubiquitin D.



Immunocytochemical staining of HepG2 cells with anti-Ubiquitin D antibody (Cat#2650, 1:1,000). Nuclei were stained blue with DAPI; Ubiquitin D was stained magenta with Alexa Fluor® 647. Images were taken using Leica stellaris 5. Protein abundance based on laser intensity and smart gain: Medium. Scale bar, 20 μ m.



Western blotting analysis using anti-Ubiquitin D antibody (Cat#2650). Total cell lysates (30 μ g) from various cell lines were loaded and separated by SDS-PAGE. The blot was incubated with anti-Ubiquitin D antibody (Cat#2650, 1:5,000) and HRP-conjugated goat anti-rabbit secondary antibody (Cat#201, 1:20,000) respectively. Image was developed using FeQ™ ECL Substrate Kit (Cat#226).