

# Anti-Epsin 1 Recombinant Rabbit Monoclonal Antibody



**Catalog #: 2651**

## Aliases

EPN1; Epsin 1; EH Domain-Binding Mitotic Phosphoprotein; EPS-15-Interacting Protein 1; Epsin-1

## Background

Gene Name: EPN1

NCBI Gene Entry: [29924](#)

UniProt Entry: [Q9Y6I3](#)

## Application Information

Molecular Weight: Predicted, 60 kDa; observed, 90 kDa

Clonality: Rabbit monoclonal antibody

Clone ID: 23GB1525

Species Reactivity: Human

Applications Tested: Western blotting (WB), flow cytometry (FCM), immunocytochemistry (IC)

## Immunogen

A synthesized peptide derived from human Epsin 1

## Isotype

Rabbit IgG

## Storage Buffer

Supplied in PBS (pH 7.4) containing 50% glycerol, and 0.02% sodium azide.

## Storage

Store at -20 °C for one year.

## Recommended Dilutions

Western Blotting (WB): 1:1,000-1:5,000

Flow Cytometry (FCM): 1:2,000

Immunocytochemistry (IC): 1:100-1:1,000

**Note:** This product is for research use only.

## Validation Data

---

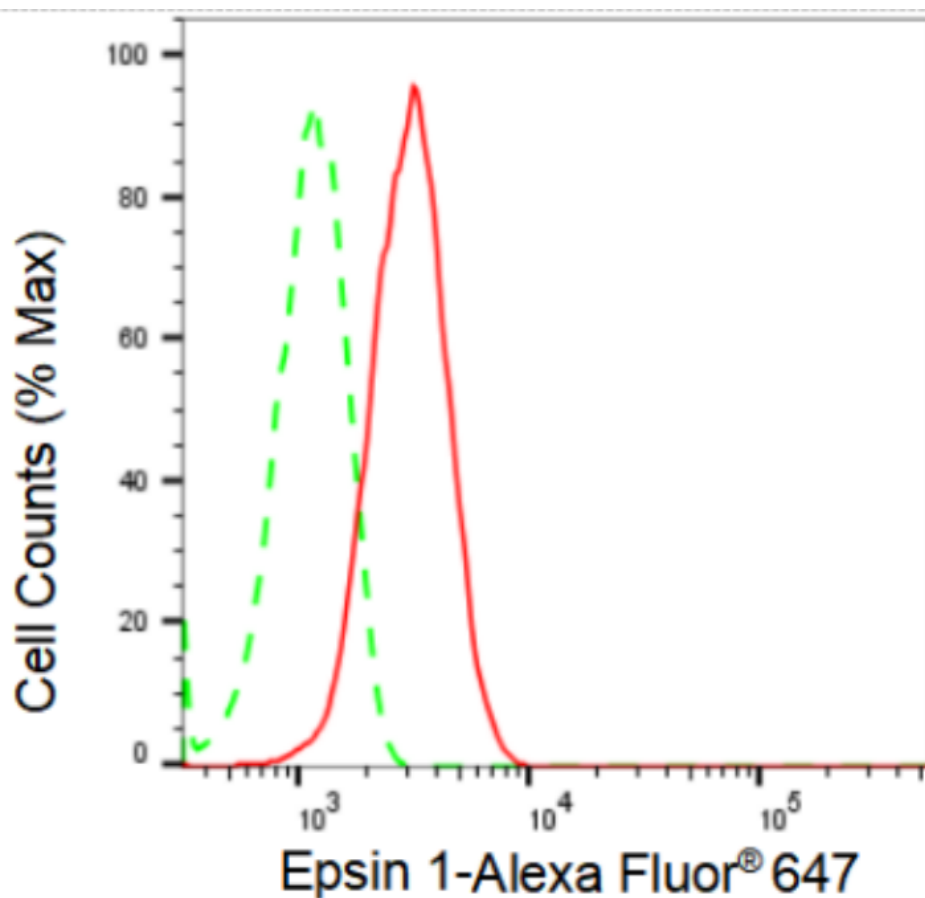
### SUPPORT

SUPPORT@GENUINBIOTECH.COM  
TEL: +1-540-855-7041

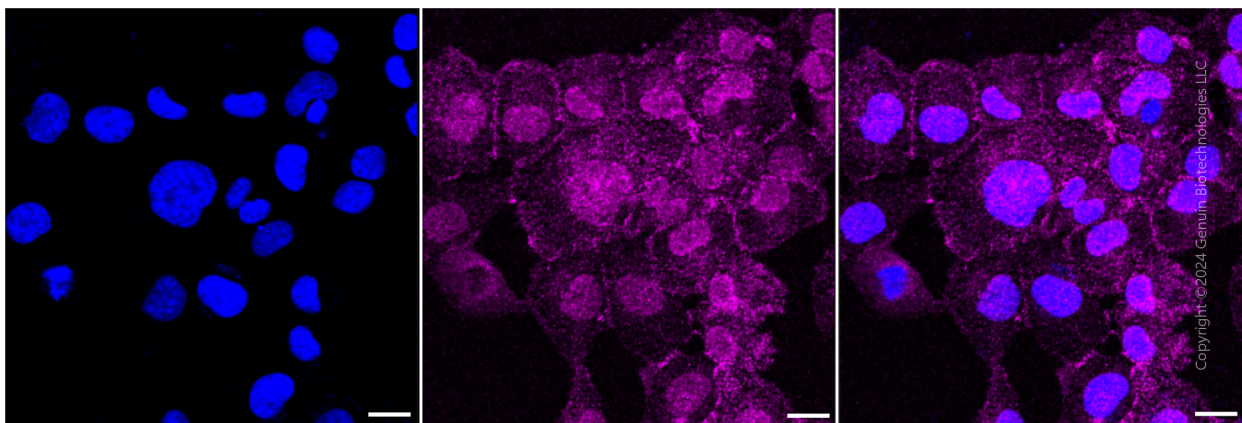
### ORDERS

SALES@GENUINBIOTECH.COM  
FAX: +1-540-855-7041

[WWW.GENUINBIOTECH.COM](http://WWW.GENUINBIOTECH.COM)



Flow cytometric analysis of Epsin 1 expression in HepG2 cells using Epsin 1 antibody (Cat#2651, 1:2,000). Green, isotype control; red, Epsin 1.



Immunocytochemical staining of HT-1080 cells with Epsin 1 antibody (Cat#2651, 1:1,000). Nuclei were stained blue with DAPI; Epsin 1 was stained magenta with Alexa Fluor® 647. Images were taken using Leica stellaris 5. Protein abundance based on laser Intensity and smart gain: Medium. Scale bar: 20 µm.

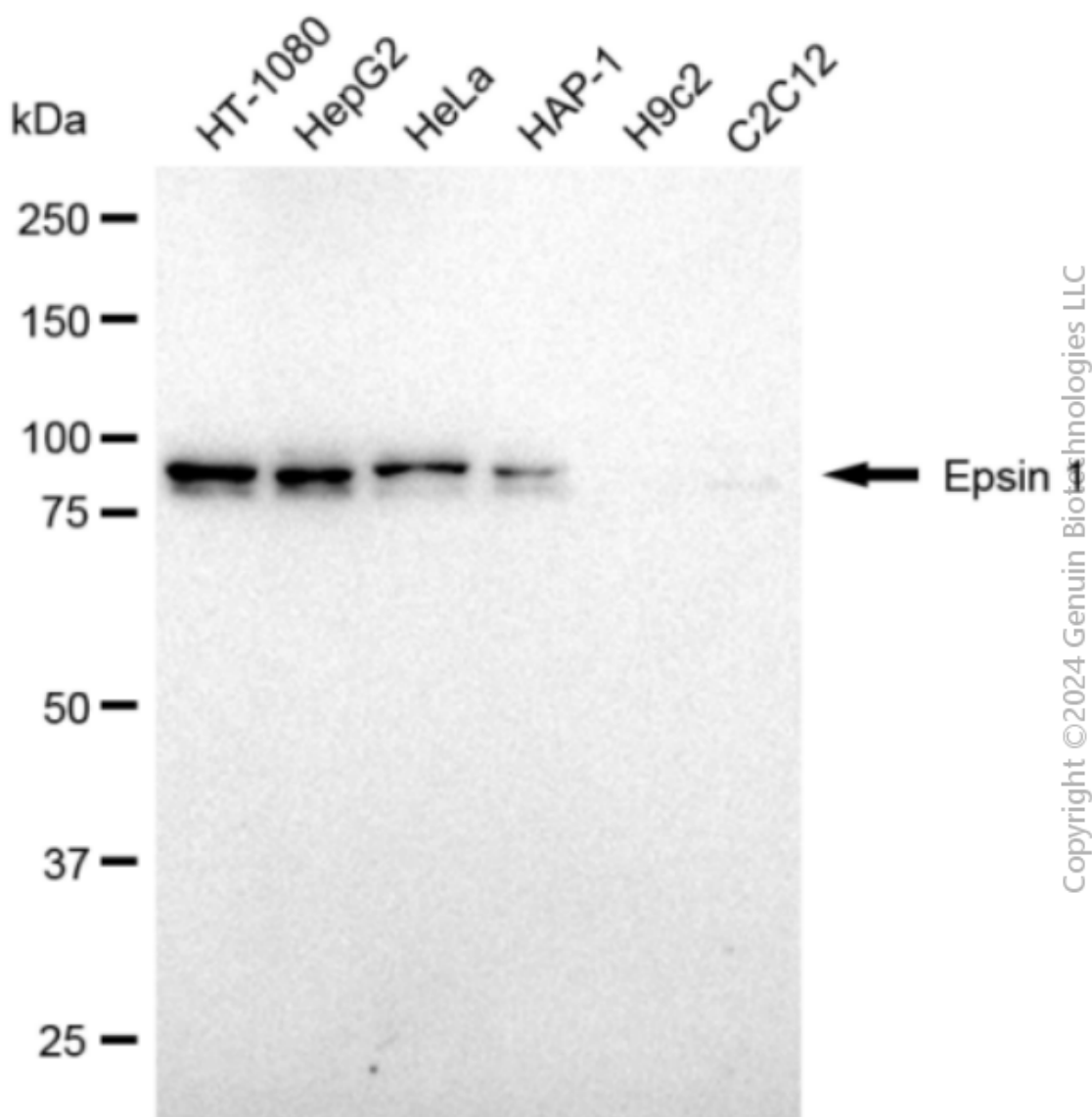
## SUPPORT

SUPPORT@GENUINBIOTECH.COM  
TEL: +1-540-855-7041

## ORDERS

SALES@GENUINBIOTECH.COM  
FAX: +1-540-855-7041

[WWW.GENUINBIOTECH.COM](http://WWW.GENUINBIOTECH.COM)



Western blotting analysis using anti-Epsin 1 antibody (Cat#2651). Total cell lysates (30 µg) from various cell lines were loaded and separated by SDS-PAGE. The blot was incubated with anti-Epsin 1 antibody (Cat#2651, 1:5,000) and HRP-conjugated goat anti-rabbit secondary antibody (Cat#201, 1:20,000) respectively. Image was developed using FeQ™ ECL Substrate Kit (Cat#226).