

# Anti-TIMP Metallopeptidase Inhibitor 2 Recombinant Rabbit Monoclonal Antibody



**Catalog #: 2653**

## Aliases

TIMP2; TIMP Metallopeptidase Inhibitor 2; CSC-21K; Tissue Inhibitor Of Metalloproteinases 2; Metalloproteinase Inhibitor 2; Tissue Inhibitor Of Metalloproteinase 2; Testicular Secretory Protein Li 57; TIMP-2; DDC8

## Background

Gene Name: TIMP2

NCBI Gene Entry: [7077](#)

UniProt Entry: [P16035](#)

## Application Information

Molecular Weight: Predicted, 24 kDa; observed, 22 kDa

Clonality: Rabbit monoclonal antibody

Clone ID: 24GB2165

Species Reactivity: Human, mouse, rat

Applications Tested: Western blotting (WB), immunocytochemistry (IC)

## Immunogen

A synthesized peptide derived from human TIMP2

## Isotype

Rabbit IgG

## Storage Buffer

Supplied in PBS (pH 7.4) containing 50% glycerol, and 0.02% sodium azide.

## Storage

Store at -20 °C for one year.

## Recommended Dilutions

Western Blotting (WB): 1:1,000-1:5,000

Immunocytochemistry (IC): 1:100-1:1,000

**Note:** This product is for research use only.

## Validation Data

---

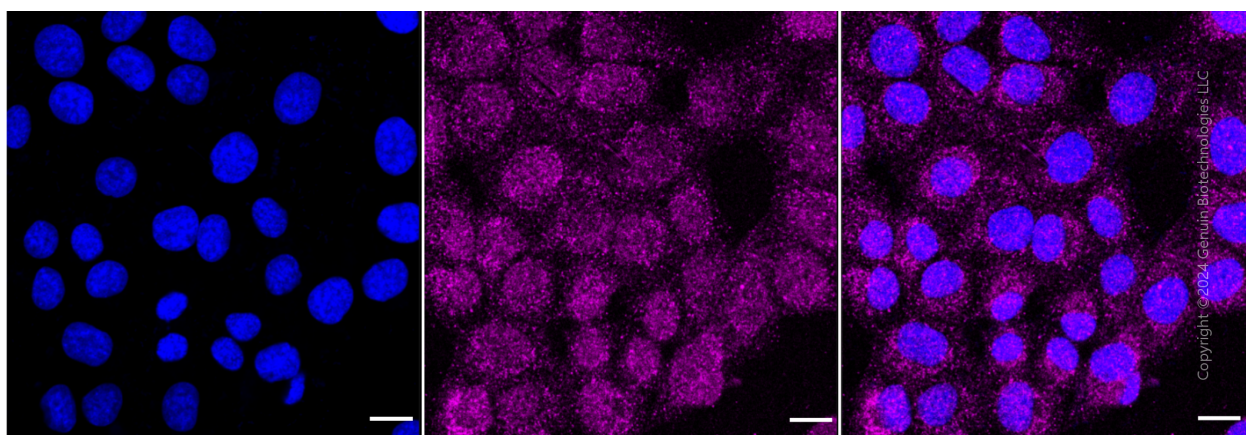
### SUPPORT

SUPPORT@GENUINBIOTECH.COM  
TEL: +1-540-855-7041

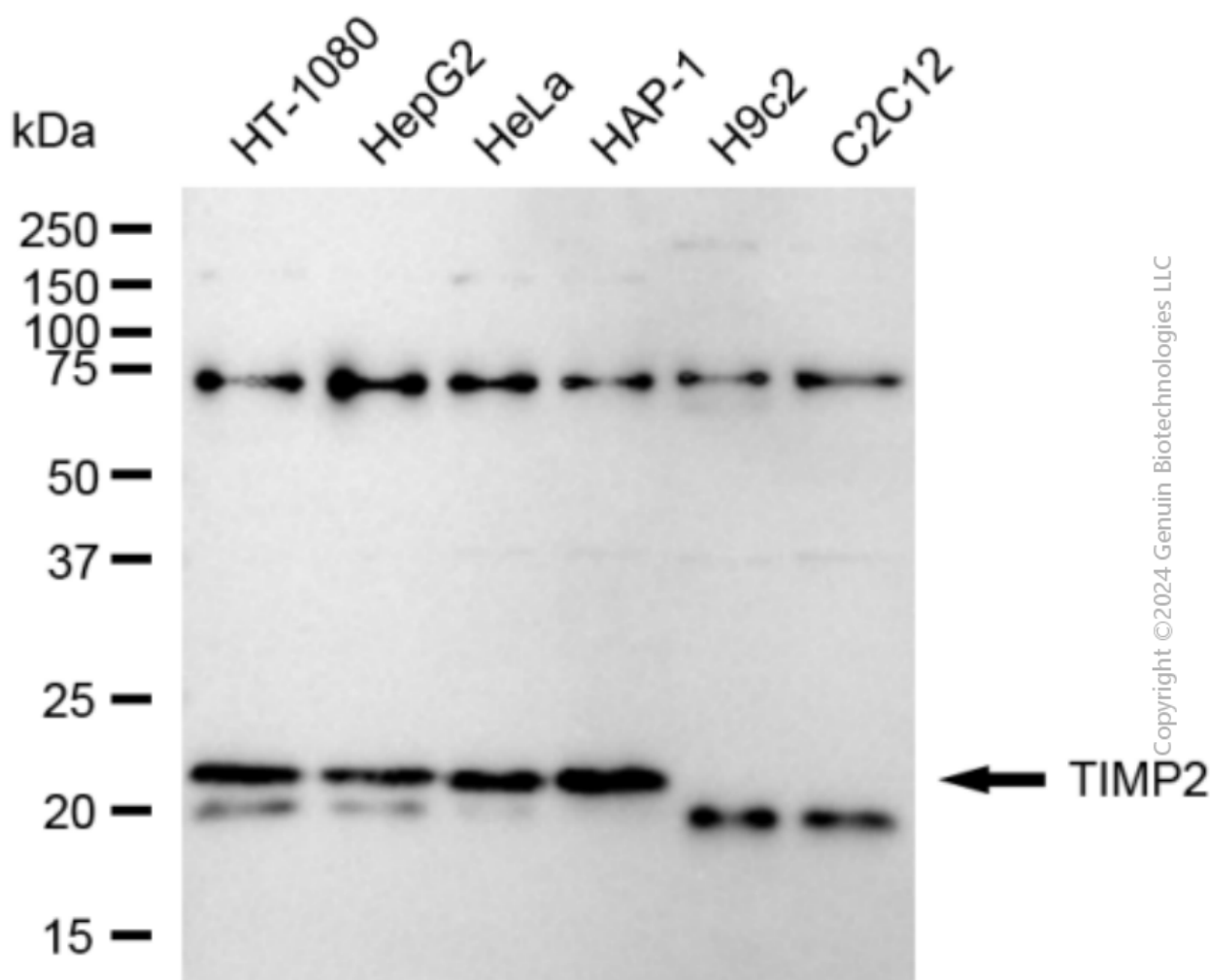
### ORDERS

SALES@GENUINBIOTECH.COM  
FAX: +1-540-855-7041

[WWW.GENUINBIOTECH.COM](http://WWW.GENUINBIOTECH.COM)



Immunocytochemical staining of HT-1080 cells with anti-TIMP2 antibody (Cat#2653, 1:1,000). Nuclei were stained blue with DAPI; TIMP2 was stained magenta with Alexa Fluor® 647. Images were taken using Leica stellaris 5. Protein abundance based on laser Intensity and smart gain: Medium. Scale bar: 20  $\mu$ m.



Western blotting analysis using anti-TIMP2 antibody (Cat#2653). Total cell lysates (30  $\mu$ g) from

## **Anti-TIMP Metallopeptidase Inhibitor 2 Recombinant Rabbit Monoclonal Antibody**

PAGE 3

various cell lines were loaded and separated by SDS-PAGE. The blot was incubated with anti-TIMP2 antibody (Cat#2653, 1:5,000) and HRP-conjugated goat anti-rabbit secondary antibody (Cat#201, 1:20,000) respectively. Image was developed using FeQ™ ECL Substrate Kit (Cat#226).

---

### **SUPPORT**

SUPPORT@GENUINBIOTECH.COM  
TEL: +1-540-855-7041

### **ORDERS**

SALES@GENUINBIOTECH.COM  
FAX: +1-540-855-7041

**WWW.GENUINBIOTECH.COM**