

Anti-TPT1 Recombinant Rabbit Monoclonal Antibody



Catalog #: 2654

Aliases

TPT1; Tumor Protein, Translationally-Controlled 1; Fortilin; TCTP; Translationally-Controlled Tumor Protein; Histamine-Releasing Factor; HRF; P23; P02

Background

Gene Name: TPT1

NCBI Gene Entry: [7178](#)

UniProt Entry: [P13693](#)

Application Information

Molecular Weight: Predicted, 20 kDa; observed, 20 kDa

Clonality: Rabbit monoclonal antibody

Clone ID: 24GB2200

Species Reactivity: Human, mouse, rat

Applications Tested: Western blotting (WB), flow cytometry (FCM), immunocytochemistry (IC)

Immunogen

A synthesized peptide derived from human TCTP

Isotype

Rabbit IgG

Storage Buffer

Supplied in PBS (pH 7.4) containing 50% glycerol, and 0.02% sodium azide.

Storage

Store at -20 °C for one year.

Recommended Dilutions

Western Blotting (WB): 1:1,000-1:5,000

Flow Cytometry (FCM): 1:2,000

Immunocytochemistry (IC): 1:100-1:1,000

Note: This product is for research use only.

Validation Data

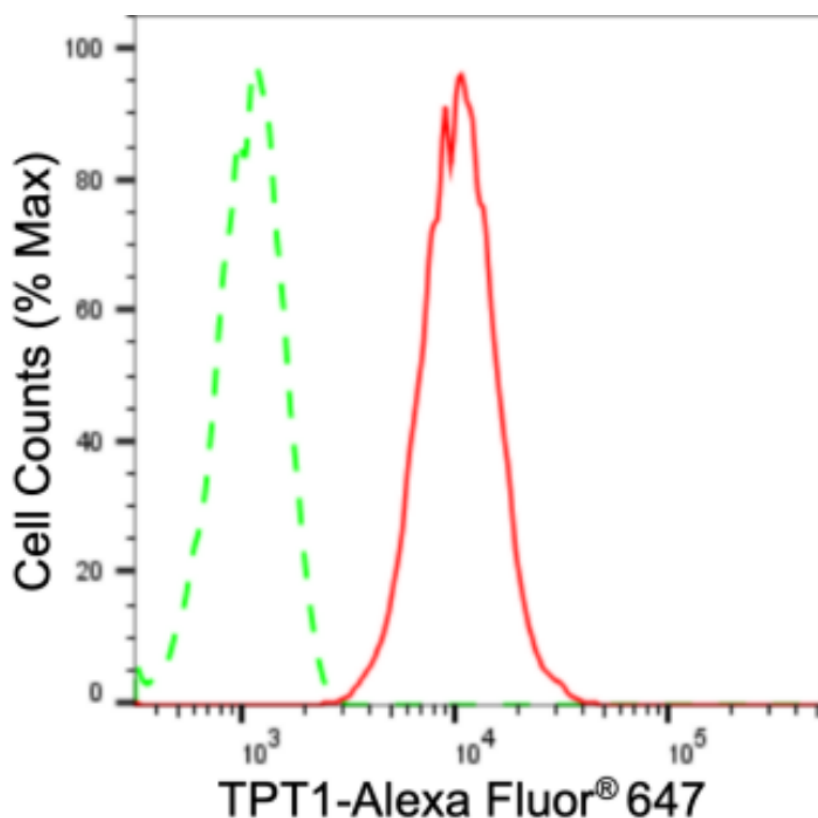
SUPPORT

SUPPORT@GENUINBIOTECH.COM
TEL: +1-540-855-7041

ORDERS

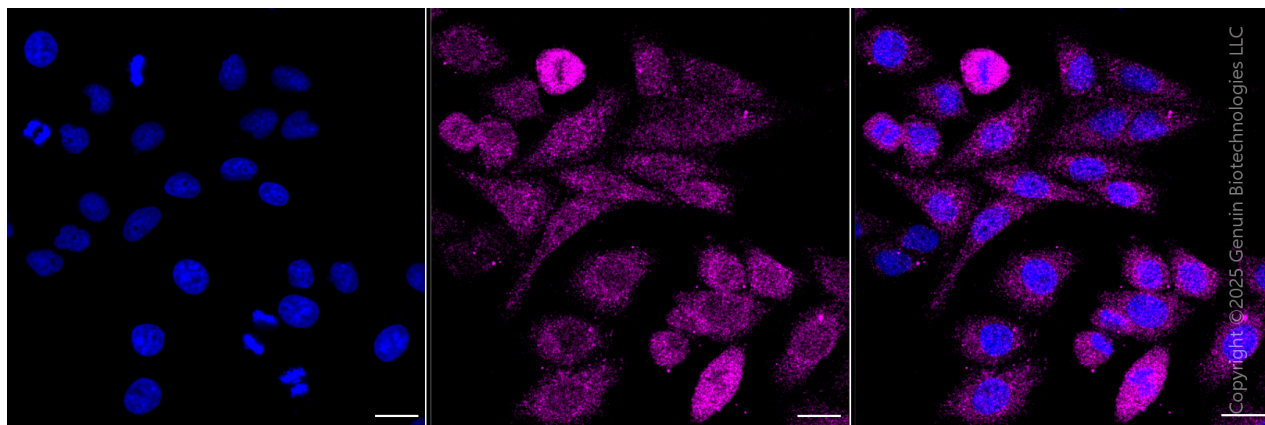
SALES@GENUINBIOTECH.COM
FAX: +1-540-855-7041

WWW.GENUINBIOTECH.COM



Copyright ©2024 Genuin Biotechnologies LLC

Flow cytometric analysis of TPT1 expression in C2C12 cells using anti-TPT1 antibody (Cat#2654, 1:2,000). Green, isotype control; red, TPT1.



Copyright ©2025 Genuin Biotechnologies LLC

Immunocytochemical staining of C2C12 cells with anti-TPT1 antibody (Cat#2654, 1:1,000). Nuclei were stained blue with DAPI; TPT1 was stained magenta with Alexa Fluor® 647. Images were taken using Leica stellaris 5. Protein abundance based on laser Intensity and smart gain: High. Scale bar, 20 μ m.

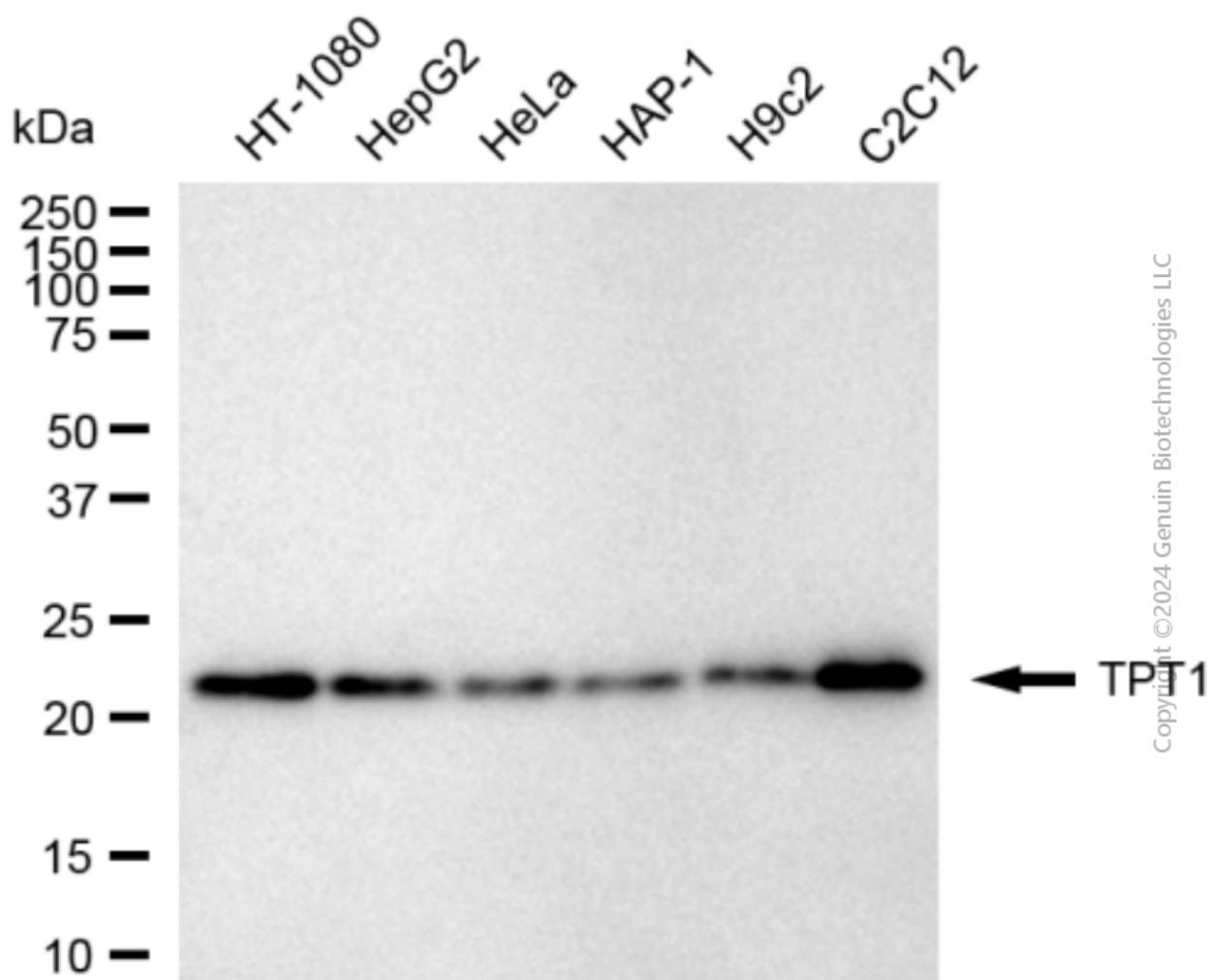
SUPPORT

SUPPORT@GENUINBIOTECH.COM
TEL: +1-540-855-7041

ORDERS

SALES@GENUINBIOTECH.COM
FAX: +1-540-855-7041

WWW.GENUINBIOTECH.COM



Western blotting analysis using anti-TPT1 antibody (Cat#2654). Total cell lysates (30 μ g) from various cell lines were loaded and separated by SDS-PAGE. The blot was incubated with anti-TPT1 antibody (Cat#2654, 1:5,000) and HRP-conjugated goat anti-rabbit secondary antibody (Cat#201, 1:20,000) respectively. Image was developed using FeQ™ ECL Substrate Kit (Cat#226).