

# Anti-SRSF1 Recombinant Rabbit Monoclonal Antibody



**Catalog #: 2656**

## Aliases

SRSF1; Serine And Arginine Rich Splicing Factor 1; ASF; SF2; Pre-mRNA-Splicing Factor SF2, P33 Subunit; Serine/Arginine-Rich Splicing Factor 1; SRp30a; SF2p33; SFRS1; Splicing Factor, Arginine/Serine-Rich 1; Alternative-Splicing Factor 1; SR Splicing Factor 1; Splicing Factor 2; MGC5228; Splicing Factor, Arginine/Serine-Rich, 30-KD, A; Alternate Splicing Factor; NEDFBA; SF2P33; ASF-1

## Background

Gene Name: SRSF1

NCBI Gene Entry: [6426](#)

UniProt Entry: [Q07955](#)

## Application Information

Molecular Weight: Predicted, 28 kDa; observed, 33 kDa

Clonality: Rabbit monoclonal antibody

Clone ID: 24GB2255

Species Reactivity: Human, mouse, rat

Applications Tested: Western blotting (WB), flow cytometry (FCM), immunocytochemistry (IC)

## Immunogen

A synthesized peptide derived from human SF2

## Isotype

Rabbit IgG

## Storage Buffer

Supplied in PBS (pH 7.4) containing 50% glycerol, and 0.02% sodium azide.

## Storage

Store at -20 °C for one year.

## Recommended Dilutions

Western Blotting (WB): 1:1,000-1:5,000

Flow Cytometry (FCM): 1:2,000

Immunocytochemistry (IC): 1:100-1:1,000

---

### SUPPORT

SUPPORT@GENUINBIOTECH.COM  
TEL: +1-540-855-7041

### ORDERS

SALES@GENUINBIOTECH.COM  
FAX: +1-540-855-7041

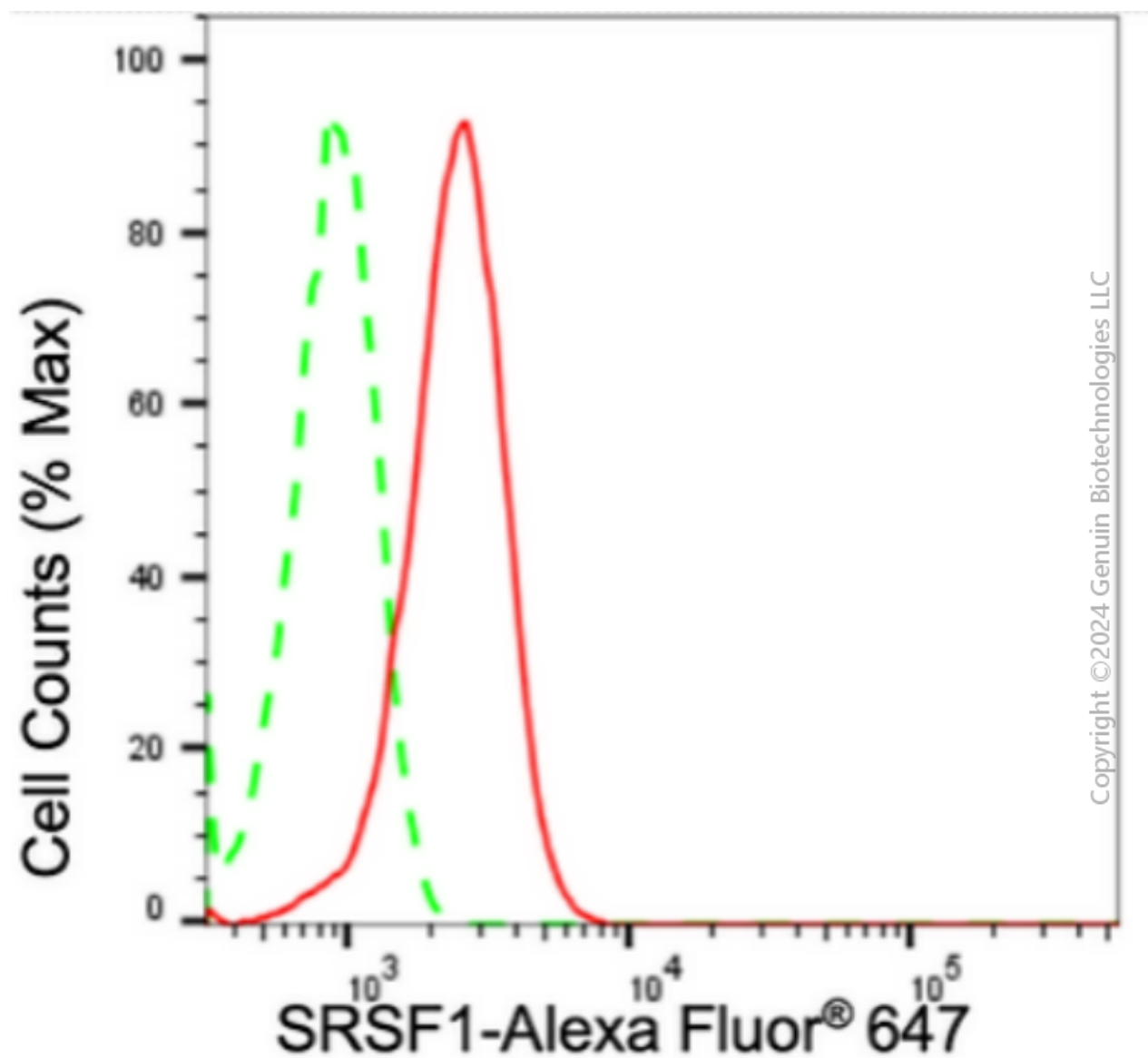
[WWW.GENUINBIOTECH.COM](http://WWW.GENUINBIOTECH.COM)

# Anti-SRSF1 Recombinant Rabbit Monoclonal Antibody

PAGE 2

**Note:** This product is for research use only.

## Validation Data



Flow cytometric analysis of SRSF1 expression in HepG2 cells using anti-SRSF1 antibody (Cat#2656, 1:2,000). Green, isotype control; red, SRSF1.

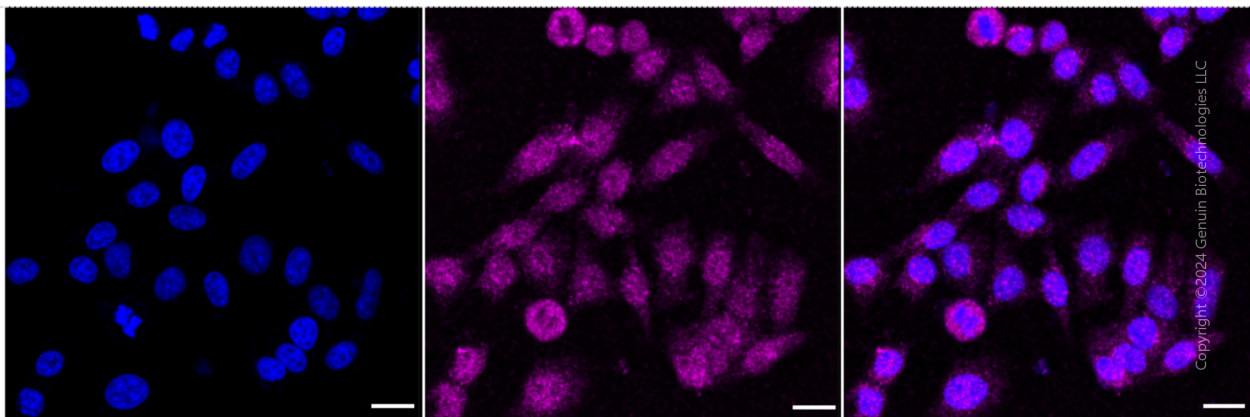
### SUPPORT

SUPPORT@GENUINBIOTECH.COM  
TEL: +1-540-855-7041

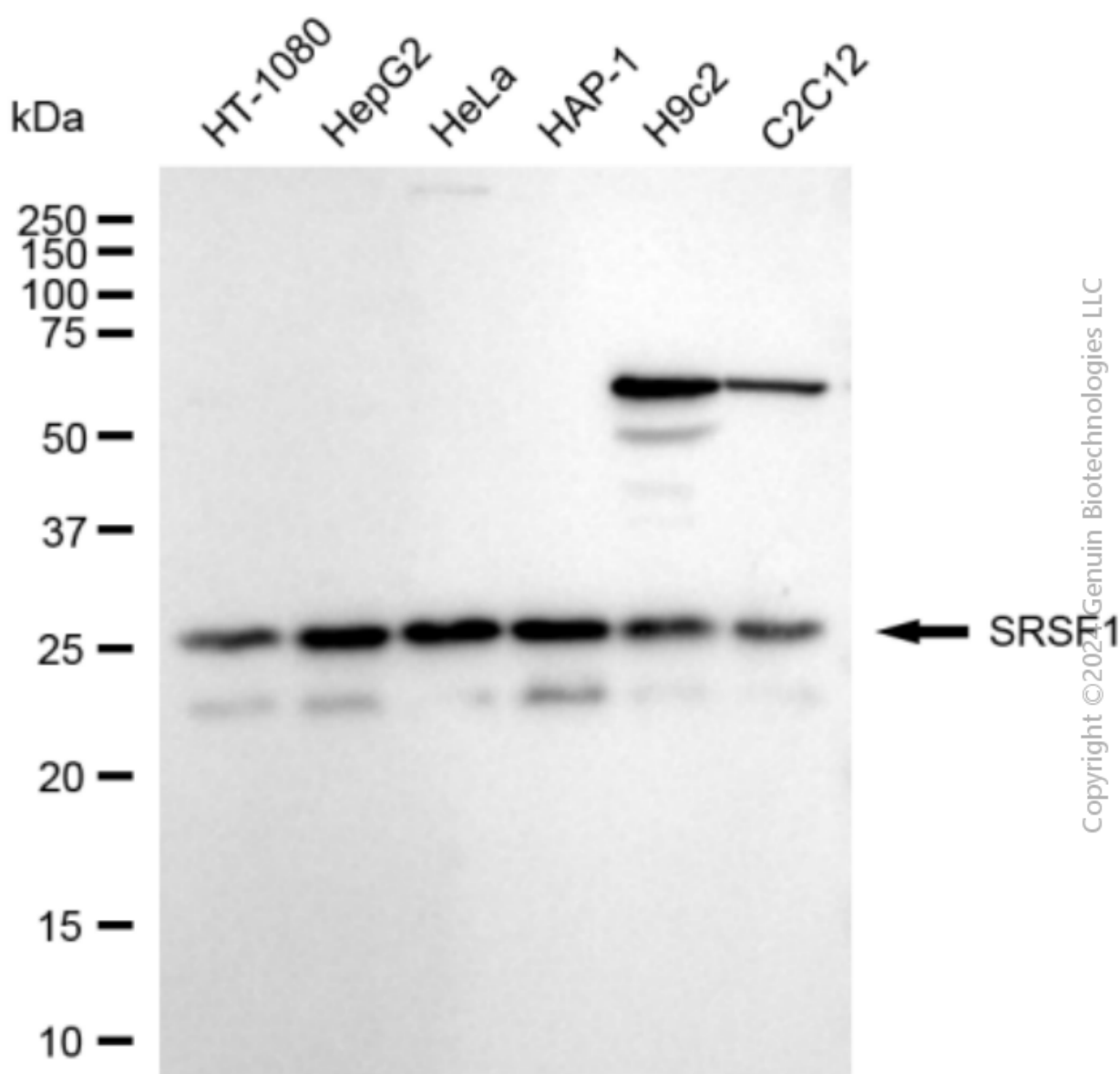
### ORDERS

SALES@GENUINBIOTECH.COM  
FAX: +1-540-855-7041

[WWW.GENUINBIOTECH.COM](http://WWW.GENUINBIOTECH.COM)



Immunocytochemical staining of HepG2 cells with anti-SRSF1 antibody (Cat#2656, 1:1,000). Nuclei were stained blue with DAPI; SRSF1 was stained magenta with Alexa Fluor® 647. Images were taken using Leica stellaris 5. Protein abundance based on laser Intensity and smart gain: Medium. Scale bar: 20  $\mu$ m.



Copyright © 2024 Genuin Biotechnologies LLC

Western blotting analysis using anti-SRSF1 antibody (Cat#2656). Total cell lysates (30 µg) from various cell lines were loaded and separated by SDS-PAGE. The blot was incubated with anti-SRSF1 antibody (Cat#2656, 1:5,000) and HRP-conjugated goat anti-rabbit secondary antibody (Cat#201, 1:20,000) respectively. Image was developed using FeQ™ ECL Substrate Kit (Cat#226).