

Anti-Stress Induced Phosphoprotein 1 Recombinant Rabbit Monoclonal Antibody



Catalog #: 2658

Aliases

STIP1; Stress Induced Phosphoprotein 1; STI1; Stress-Induced-Phosphoprotein 1; HOP; Transformation-Sensitive Protein IEF SSP 3521; Renal Carcinoma Antigen NY-REN-11; Hsp70/Hsp90-Organizing Protein ; Hsc70/Hsp90-Organizing Protein; Epididymis Secretory Sperm Binding Protein Li 94n; NY-REN-11 Antigen; IEF-SSP-3521; HEL-S-94n; STI1L; P60; Hop

Background

Gene Name: STIP1

NCBI Gene Entry: [10963](#)

UniProt Entry: [P31948](#)

Application Information

Molecular Weight: Predicted, 63 kDa; observed, 63 kDa

Clonality: Rabbit monoclonal antibody

Clone ID: 24GB2270

Species Reactivity: Human, mouse, rat

Applications Tested: Western blotting (WB), immunocytochemistry (IC)

Immunogen

A synthesized peptide derived from human STIP1

Isotype

Rabbit IgG

Storage Buffer

Supplied in PBS (pH 7.4) containing 50% glycerol, and 0.02% sodium azide.

Storage

Store at -20 °C for one year.

Recommended Dilutions

Western Blotting (WB): 1:1,000-1:5,000

Immunocytochemistry (IC): 1:100-1:1,000

Note: This product is for research use only.

SUPPORT

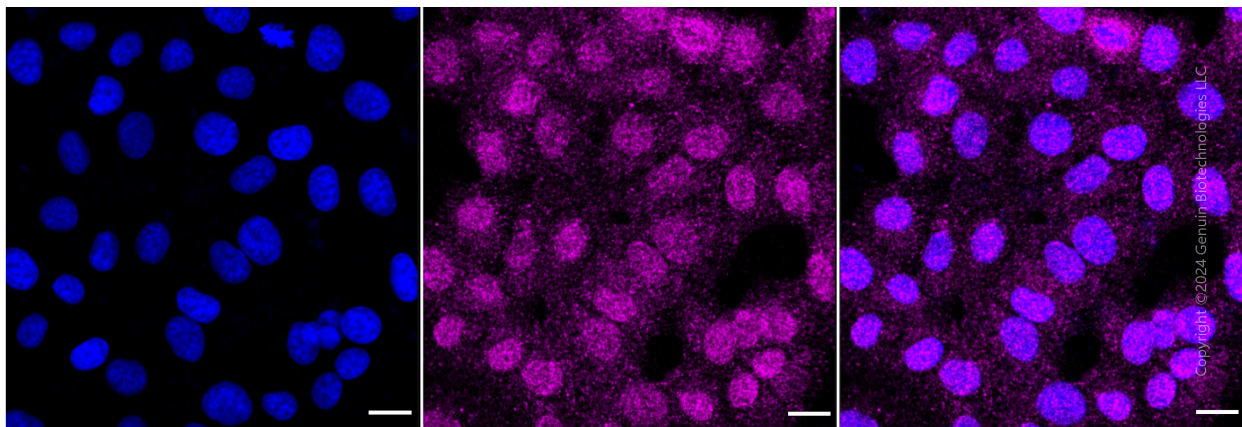
SUPPORT@GENUINBIOTECH.COM
TEL: +1-540-855-7041

ORDERS

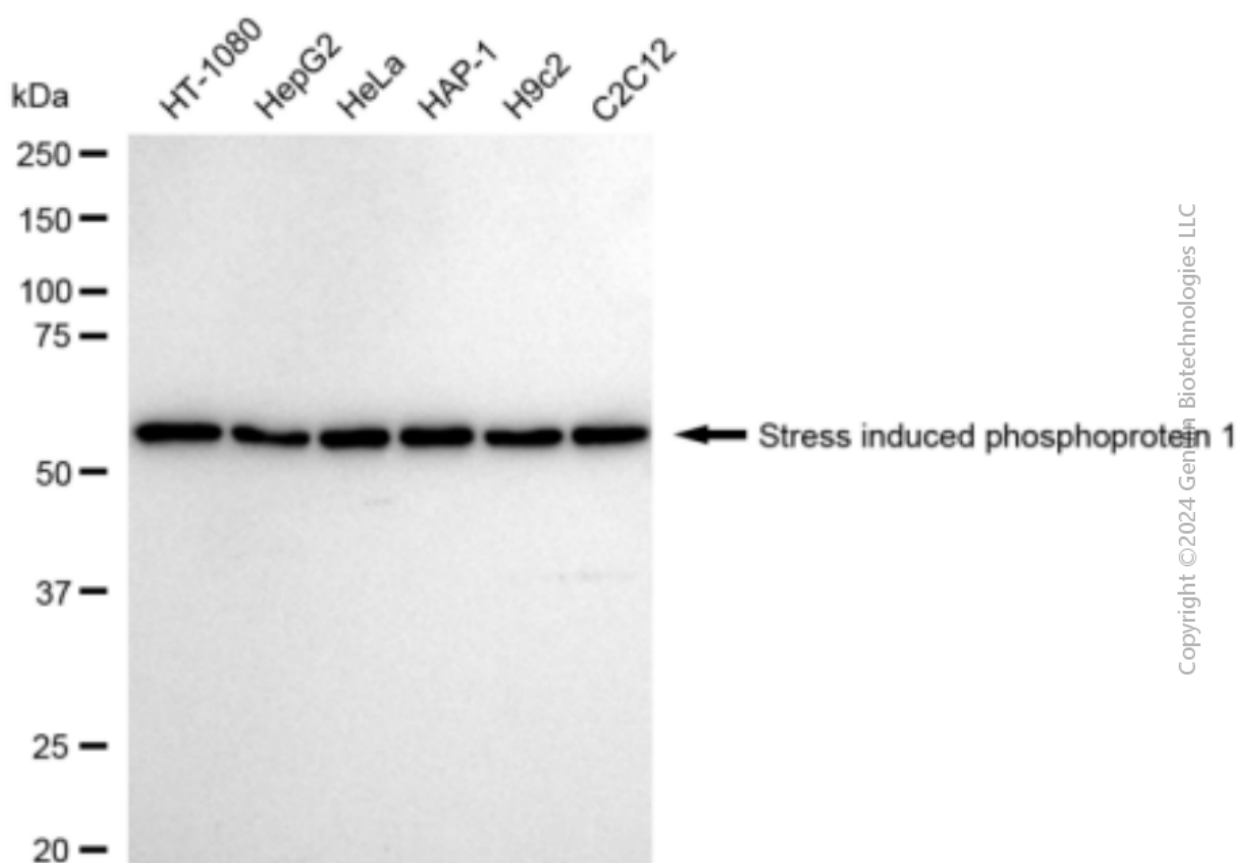
SALES@GENUINBIOTECH.COM
FAX: +1-540-855-7041

WWW.GENUINBIOTECH.COM

Validation Data



Immunocytochemical staining of HT-1080 cells with anti-stress induced phosphoprotein 1 antibody (Cat#2658, 1:1,000). Nuclei were stained blue with DAPI; Stress induced phosphoprotein 1 was stained magenta with Alexa Fluor® 647. Images were taken using Leica stellaris 5. Protein abundance based on laser Intensity and smart gain: Medium. Scale bar: 20 μ m.



Western blotting analysis using anti-Stress induced phosphoprotein 1 antibody (Cat#2658). Total cell lysates (30 μ g) from various cell lines were loaded and separated by SDS-PAGE. The blot was

SUPPORT

SUPPORT@GENUINBIOTECH.COM
TEL: +1-540-855-7041

ORDERS

SALES@GENUINBIOTECH.COM
FAX: +1-540-855-7041

WWW.GENUINBIOTECH.COM

Anti-Stress Induced Phosphoprotein 1 Recombinant Rabbit Monoclonal Antibody

PAGE 3

incubated with anti-Stress induced phosphoprotein 1 antibody (Cat#2658, 1:5,000) and HRP-conjugated goat anti-rabbit secondary antibody (Cat#201, 1:20,000) respectively. Image was developed using FeQ™ ECL Substrate Kit (Cat#226).

SUPPORT

SUPPORT@GENUINBIOTECH.COM
TEL: +1-540-855-7041

ORDERS

SALES@GENUINBIOTECH.COM
FAX: +1-540-855-7041

WWW.GENUINBIOTECH.COM