

# Anti-TAO Kinase 1 Recombinant Rabbit Monoclonal Antibody



**Catalog #: 2660**

## Aliases

TAOK1; TAO Kinase 1; MAP3K16; HTAOK1; HKFC-B; MARKK; PSK2; Thousand And One Amino Acid Protein Kinase 1; Prostate-Derived Sterile 20-Like Kinase 2; MARK Kinase; KIAA1361; TAO1; Serine/Threonine-Protein Kinase TAO1; Prostate-Derived STE20-Like Kinase 2; Kinase From Chicken Homolog B; EC 2.7.11.1; FLJ14314; PSK-2; Microtubule Affinity Regulating Kinase Kinase; Serine/Threonine Protein Kinase TAO1 Homolog; Thousand And One Amino Acid Protein 1; STE20-Like Kinase PSK2; EC 2.7.11; KFC-B; DDIB

## Background

Gene Name: TAOK1

NCBI Gene Entry: [57551](#)

UniProt Entry: [Q7L7X3](#)

## Application Information

Molecular Weight: Predicted, 116 kDa; observed, 116 kDa

Clonality: Rabbit monoclonal antibody

Clone ID: 24GB2320

Species Reactivity: Human, mouse, rat

Applications Tested: Western blotting (WB), flow cytometry (FCM), immunocytochemistry (IC)

## Immunogen

A synthesized peptide derived from human TAOK1

## Isotype

Rabbit IgG

## Storage Buffer

Supplied in PBS (pH 7.4) containing 50% glycerol, and 0.02% sodium azide.

## Storage

Store at -20 °C for one year.

## Recommended Dilutions

Western Blotting (WB): 1:1,000-1:5,000

Flow Cytometry (FCM): 1:2,000

Immunocytochemistry (IC): 1:100-1:1,000

---

### SUPPORT

SUPPORT@GENUINBIOTECH.COM  
TEL: +1-540-855-7041

### ORDERS

SALES@GENUINBIOTECH.COM  
FAX: +1-540-855-7041

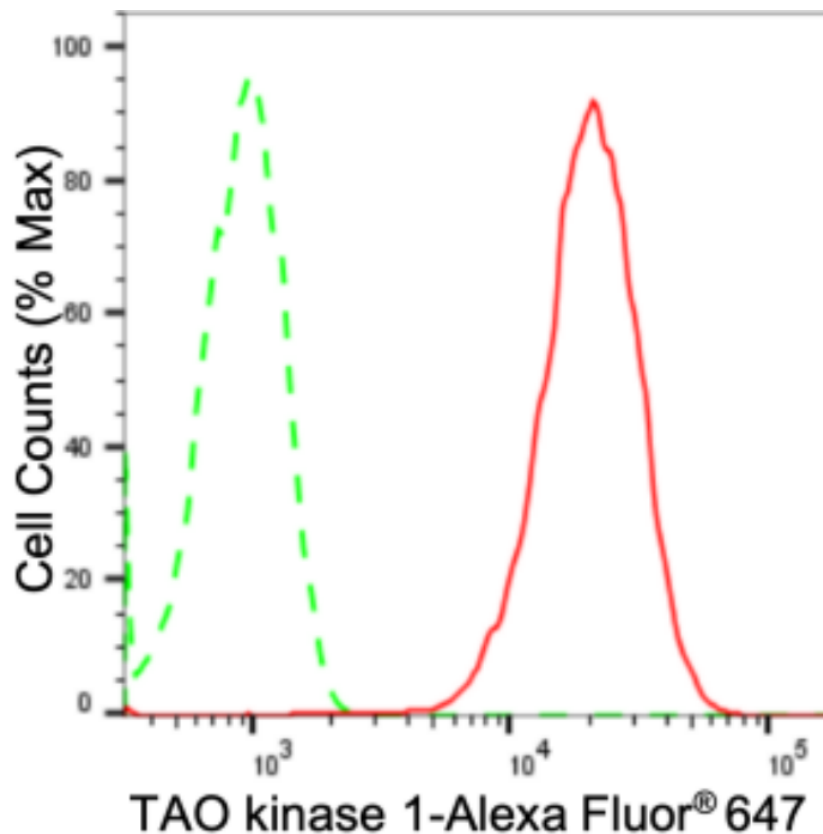
[WWW.GENUINBIOTECH.COM](http://WWW.GENUINBIOTECH.COM)

# Anti-TAO Kinase 1 Recombinant Rabbit Monoclonal Antibody

PAGE 2

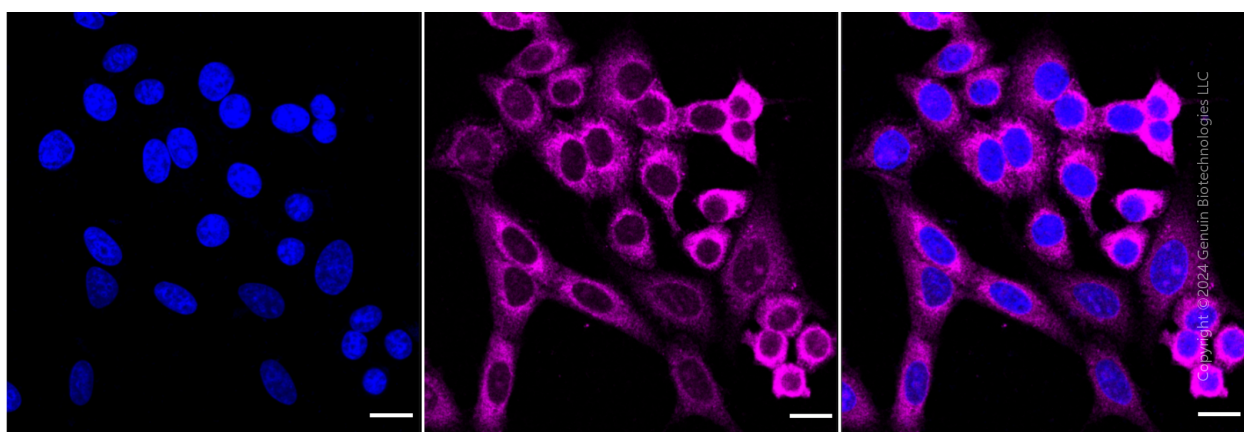
**Note:** This product is for research use only.

## Validation Data



Copyright ©2024 Genuin Biotechnologies LLC

Flow cytometric analysis of TAO kinase 1 expression in HepG2 cells using anti-TAO kinase 1 antibody (Cat#2660, 1:2,000). Green, isotype control; red, TAO kinase 1.



Copyright ©2024 Genuin Biotechnologies LLC

Immunocytochemical staining of HepG2 cells with anti-TAO kinase 1 antibody (Cat#2660, 1:1,000). Nuclei were stained blue with DAPI; TAO kinase 1 was stained magenta with Alexa Fluor® 647. Images were taken using Leica stellaris 5. Protein abundance based on laser Intensity and smart gain: Medium. Scale bar: 20  $\mu$ m.

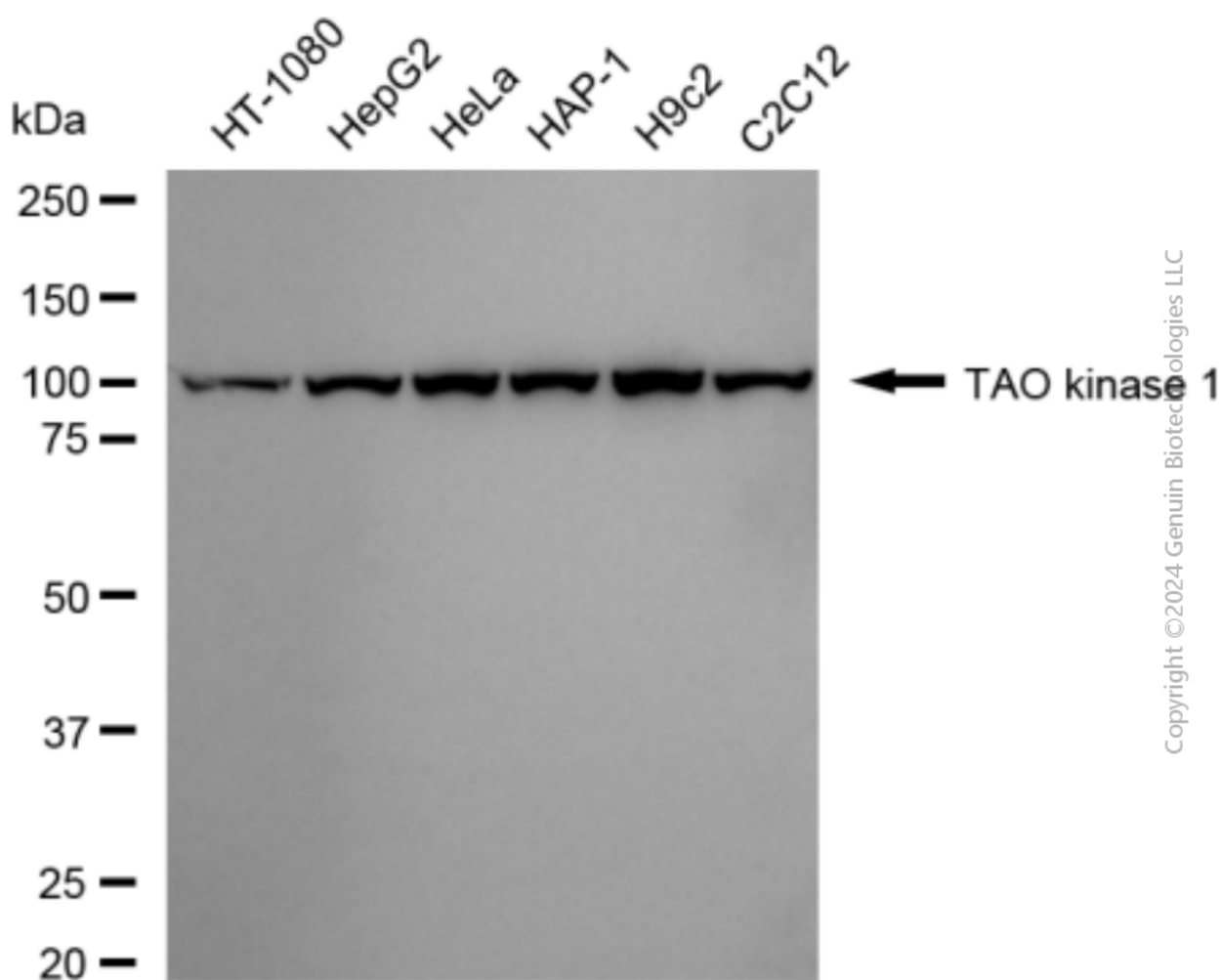
### SUPPORT

SUPPORT@GENUINBIOTECH.COM  
TEL: +1-540-855-7041

### ORDERS

SALES@GENUINBIOTECH.COM  
FAX: +1-540-855-7041

[WWW.GENUINBIOTECH.COM](http://WWW.GENUINBIOTECH.COM)



Copyright ©2024 Genuin Biotechnologies LLC

Western blotting analysis using anti-TAO kinase 1 antibody (Cat#2660). Total cell lysates (30 µg) from various cell lines were loaded and separated by SDS-PAGE. The blot was incubated with anti-TAO kinase 1 antibody (Cat#2660, 1:5,000) and HRP-conjugated goat anti-rabbit secondary antibody (Cat#201, 1:20,000) respectively. Image was developed using FeQ™ ECL Substrate Kit (Cat#226).