

Anti-Solute Carrier Family 6 Member 1 Recombinant Rabbit Monoclonal Antibody



Catalog #: 2666

Aliases

SLC6A1; Solute Carrier Family 6 Member 1; GABATR; GAT1; Sodium- And Chloride-Dependent GABA Transporter 1; GABATHG; HGAT-1; GAT-1; Solute Carrier Family 6 (Neurotransmitter Transporter, GABA), Member 1; Solute Carrier Family 6 (Neurotransmitter Transporter), Member 1; GABA Transporter 1; GABT1; MAE

Background

Gene Name: SLC6A1

NCBI Gene Entry: [6529](#)

UniProt Entry: [P30531](#)

Application Information

Molecular Weight: Predicted, 67 kDa; observed, 50 kDa

Clonality: Rabbit monoclonal antibody

Clone ID: 24GB2390

Species Reactivity: Mouse

Applications Tested: Western blotting (WB), flow cytometry (FCM), immunocytochemistry (IC)

Immunogen

A synthesized peptide derived from human SLC6A1 / GAT1

Isotype

Rabbit IgG

Storage Buffer

Supplied in PBS (pH 7.4) containing 50% glycerol, and 0.02% sodium azide.

Storage

Store at -20 °C for one year.

Recommended Dilutions

Western Blotting (WB): 1:1,000-1:5,000,

Flow Cytometry (FCM): 1:2,000

Immunocytochemistry (IC): 1:100-1:1,000

SUPPORT

SUPPORT@GENUINBIOTECH.COM
TEL: +1-540-855-7041

ORDERS

SALES@GENUINBIOTECH.COM
FAX: +1-540-855-7041

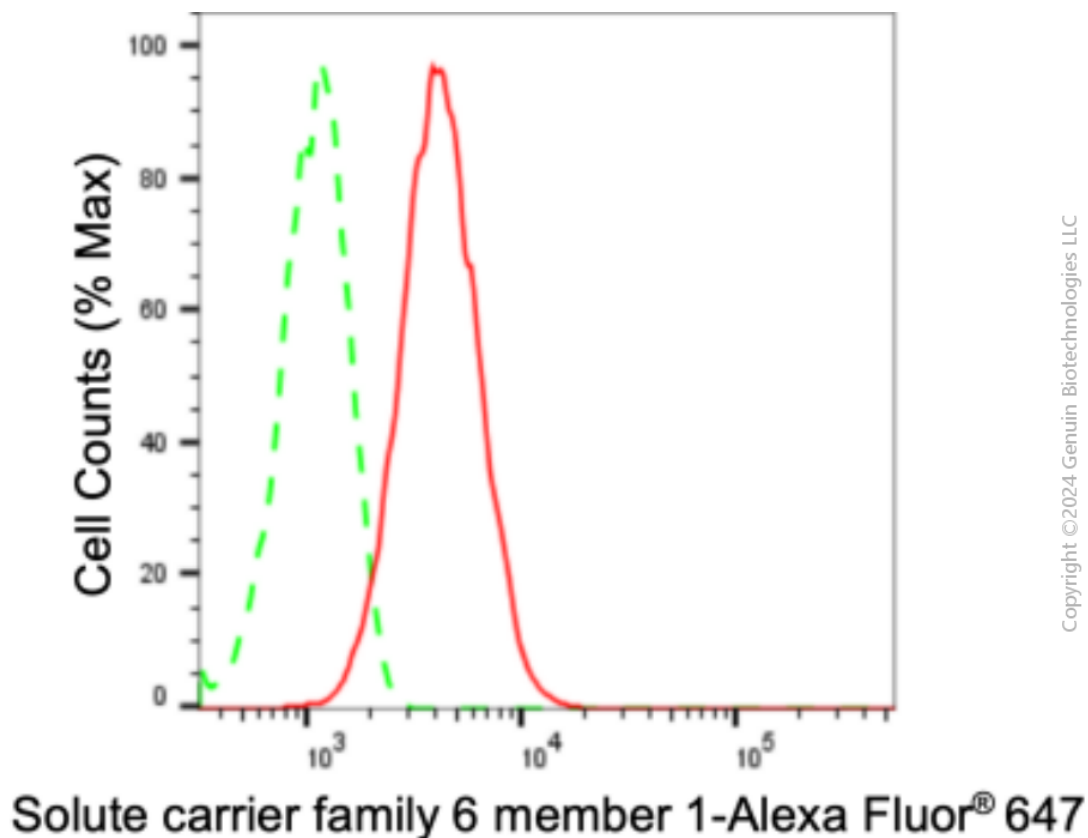
WWW.GENUINBIOTECH.COM

Anti-Solute Carrier Family 6 Member 1 Recombinant Rabbit Monoclonal Antibody

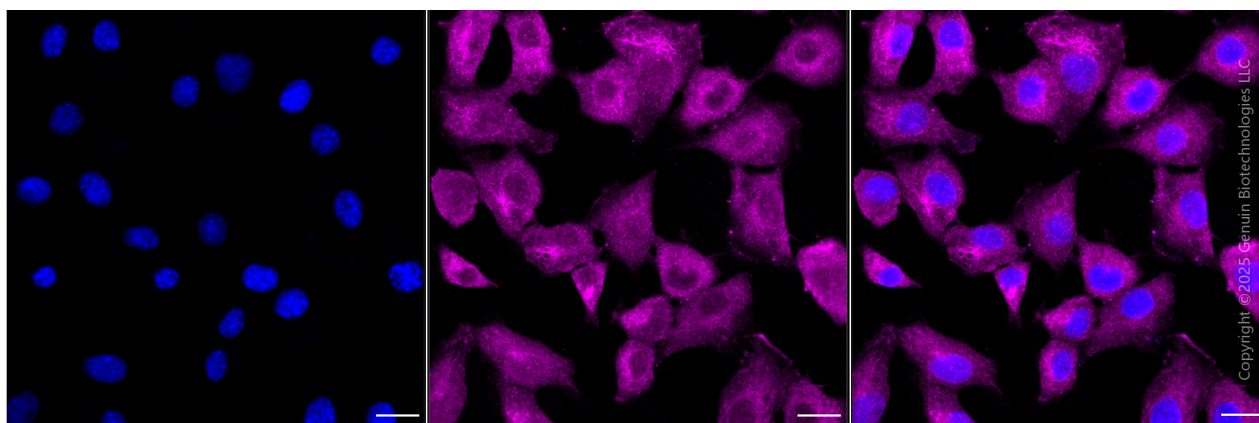
PAGE 2

Note: This product is for research use only.

Validation Data



Flow cytometric analysis of Solute carrier family 6 member 1 expression in C2C12 cells using anti-Solute carrier family 6 member 1 antibody (Cat#2666, 1:2,000). Green, isotype control; red, Solute carrier family 6 member 1.



Immunocytochemical staining of C2C12 cells with anti-Solute carrier family 6 member 1 antibody (Cat#2666, 1:1,000). Nuclei were stained blue with DAPI; Solute carrier family 6 member 1 was stained magenta with Alexa Fluor® 647. Images were taken using Leica stellaris 5. Protein abundance based on laser Intensity and smart gain: Medium. Scale bar, 20 µm.

SUPPORT

SUPPORT@GENUINBIOTECH.COM
TEL: +1-540-855-7041

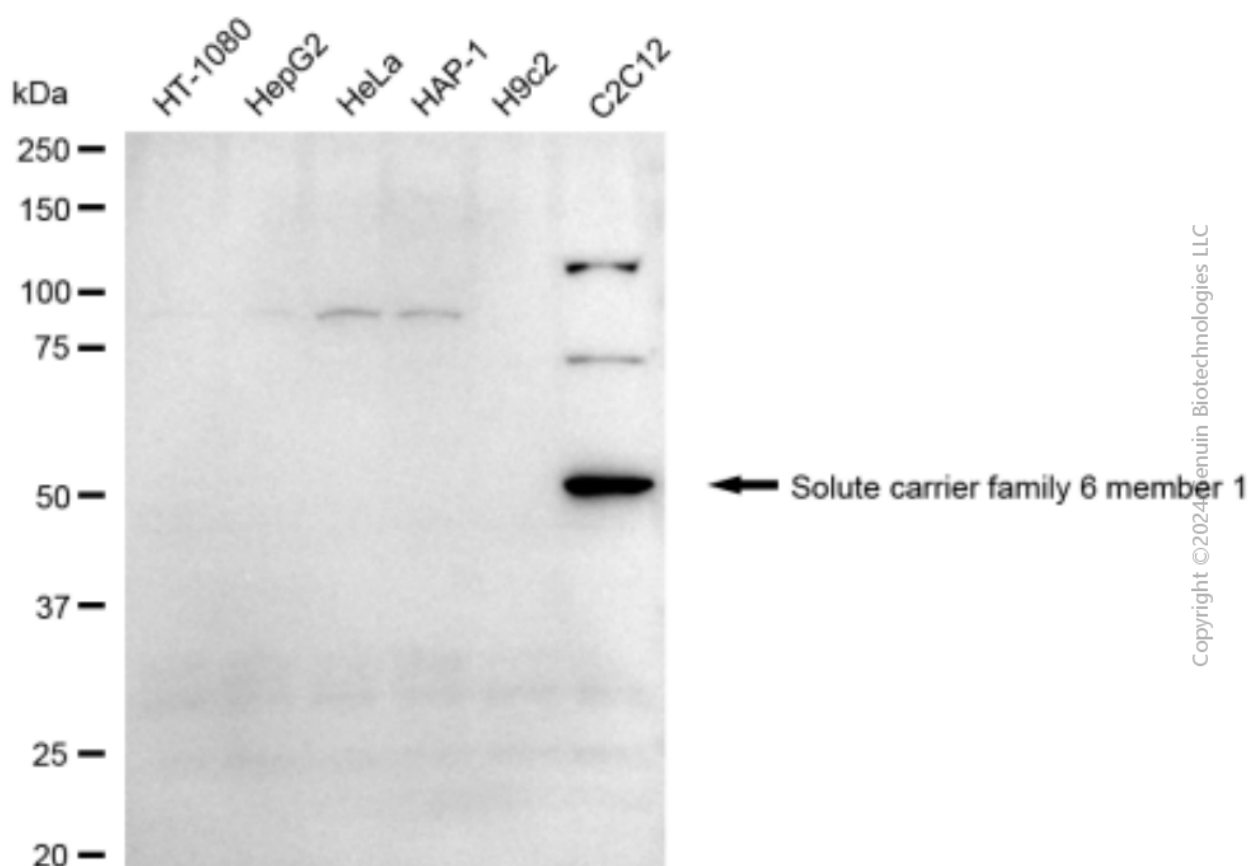
ORDERS

SALES@GENUINBIOTECH.COM
FAX: +1-540-855-7041

WWW.GENUINBIOTECH.COM

Anti-Solute Carrier Family 6 Member 1 Recombinant Rabbit Monoclonal Antibody

PAGE 3



Western blotting analysis using anti-Solute carrier family 6 member 1 antibody (Cat#2666). Total cell lysates (30 µg) from various cell lines were loaded and separated by SDS-PAGE. The blot was incubated with anti-Solute carrier family 6 member 1 antibody (Cat#2666, 1:5,000) and HRP-conjugated goat anti-rabbit secondary antibody (Cat#201, 1:20,000) respectively. Image was developed using FeQ™ ECL Substrate Kit (Cat#226).

SUPPORT

SUPPORT@GENUINBIOTECH.COM
TEL: +1-540-855-7041

ORDERS

SALES@GENUINBIOTECH.COM
FAX: +1-540-855-7041

WWW.GENUINBIOTECH.COM