

# Anti-WNK Lysine Deficient Protein Kinase 1 Recombinant Rabbit Monoclonal Antibody



**Catalog #: 2672**

## Aliases

WNK1; WNK Lysine Deficient Protein Kinase 1; PPP1R167; PRKWNK1; HSN2; HSN2; Protein Phosphatase 1, Regulatory Subunit 167; Serine/Threonine-Protein Kinase WNK1; Protein Kinase With No Lysine 1; Erythrocyte 65 KDa Protein; EC 2.7.11.1; KDP; P65; Prostate-Derived Sterile 20-Like Kinase; Hereditary Sensory Neuropathy, Type II; Serine/Threonine-Protein Kinase WNK1; Serine/Threonine-Protein Kinase WNK1; Protein Kinase, Lysine Deficient 1; Protein Kinase Lysine-Deficient 1; Kinase Deficient Protein; EC 2.7.11; KIAA0344; HWNK1; PSK

## Background

Gene Name: WNK1

NCBI Gene Entry: [65125](#)

UniProt Entry: [Q9H4A3](#)

## Application Information

Molecular Weight: Predicted, 251 kDa; observed, 280 kDa

Clonality: Rabbit monoclonal antibody

Clone ID: 24GB2490

Species Reactivity: Human

Applications Tested: Western blotting (WB), immunocytochemistry (IC)

## Immunogen

A synthesized peptide derived from human WNK1

## Isotype

Rabbit IgG

## Storage Buffer

Supplied in PBS (pH 7.4) containing 50% glycerol, and 0.02% sodium azide.

## Storage

Store at -20 °C for one year.

## Recommended Dilutions

Western Blotting (WB): 1:1,000-1:5,000

Immunocytochemistry (IC): 1:100-1:1,000

---

### SUPPORT

SUPPORT@GENUINBIOTECH.COM  
TEL: +1-540-855-7041

### ORDERS

SALES@GENUINBIOTECH.COM  
FAX: +1-540-855-7041

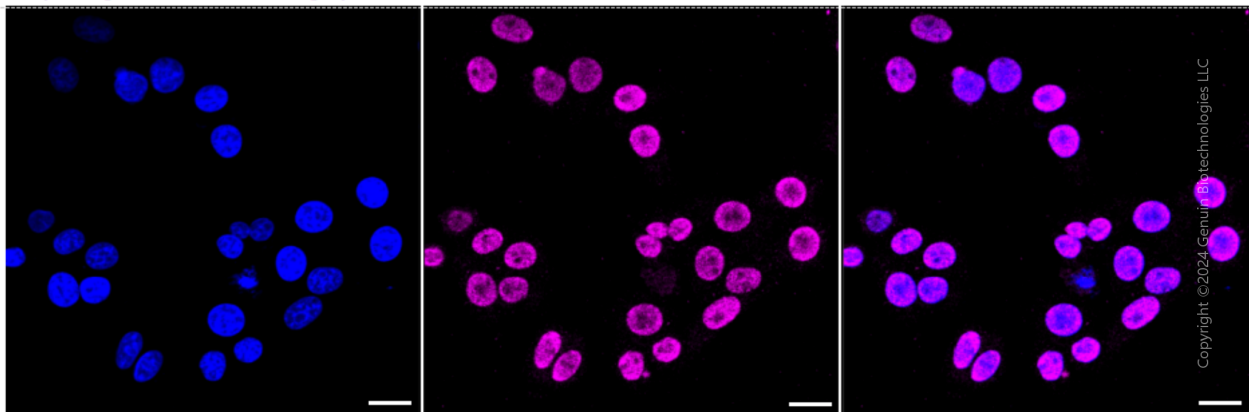
[WWW.GENUINBIOTECH.COM](http://WWW.GENUINBIOTECH.COM)

# Anti-WNK Lysine Deficient Protein Kinase 1 Recombinant Rabbit Monoclonal Antibody

PAGE 2

**Note:** This product is for research use only.

## Validation Data



Immunocytochemical staining of HepG2 cells with anti-WNK1 antibody (Cat#2672, 1:1,000). Nuclei were stained blue with DAPI; WNK1 was stained magenta with Alexa Fluor® 647. Images were taken using Leica stellaris 5. Protein abundance based on laser Intensity and smart gain: Medium. Scale bar: 20  $\mu$ m.

---

### SUPPORT

SUPPORT@GENUINBIOTECH.COM  
TEL: +1-540-855-7041

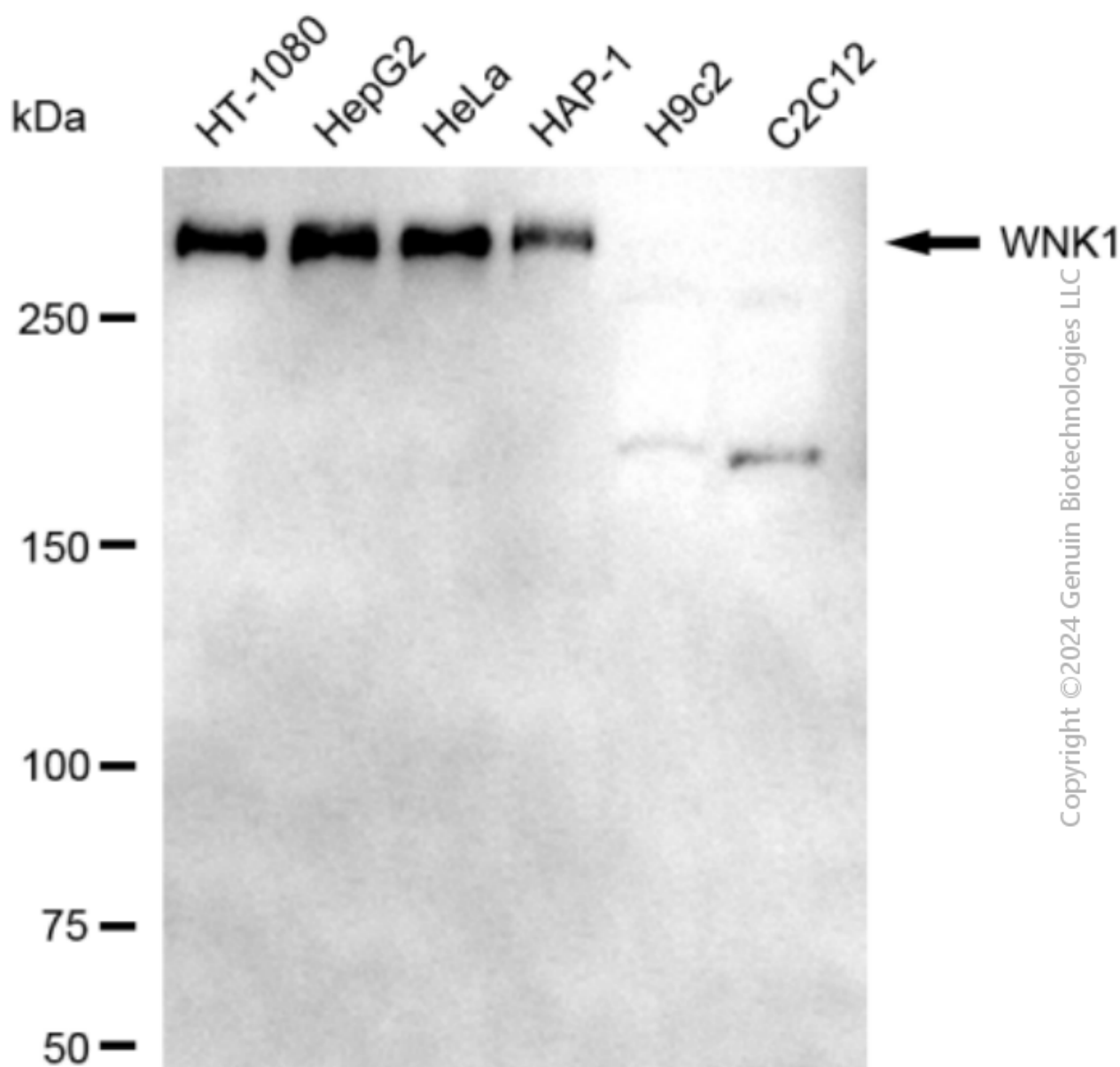
### ORDERS

SALES@GENUINBIOTECH.COM  
FAX: +1-540-855-7041

[WWW.GENUINBIOTECH.COM](http://WWW.GENUINBIOTECH.COM)

## Anti-WNK Lysine Deficient Protein Kinase 1 Recombinant Rabbit Monoclonal Antibody

PAGE 3



Western blotting analysis using anti-WNK1 antibody (Cat#2672). Total cell lysates (30  $\mu$ g) from various cell lines were loaded and separated by SDS-PAGE. The blot was incubated with anti-WNK1 antibody (Cat#2672, 1:5,000) and HRP-conjugated goat anti-rabbit secondary antibody (Cat#201, 1:20,000) respectively. Image was developed using FeQ™ ECL Substrate Kit (Cat#226).

### SUPPORT

SUPPORT@GENUINBIOTECH.COM  
TEL: +1-540-855-7041

### ORDERS

SALES@GENUINBIOTECH.COM  
FAX: +1-540-855-7041

WWW.GENUINBIOTECH.COM