

Anti-UBE2C Recombinant Rabbit Monoclonal Antibody



Catalog #: 2675

Aliases

UBE2C; Ubiquitin Conjugating Enzyme E2 C; UBCH10; (E3-Independent) E2 Ubiquitin-Conjugating Enzyme C; Ubiquitin-Conjugating Enzyme E2 C; E2 Ubiquitin-Conjugating Enzyme C; Ubiquitin-Protein Ligase C; Mitotic-Specific Ubiquitin-Conjugating Enzyme; Cyclin-Selective Ubiquitin Carrier Protein; Ubiquitin-Conjugating Enzyme E2C; Ubiquitin Conjugating Enzyme E2C; Ubiquitin Carrier Protein C; EC 2.3.2.23; EC 2.3.2.24; EC 6.3.2.19; DJ447F3.2; UbcH10

Background

Gene Name: UBE2C

NCBI Gene Entry: [11065](#)

UniProt Entry: [O00762](#)

Application Information

Molecular Weight: Predicted, 20 kDa; observed, 20 kDa

Clonality: Rabbit monoclonal antibody

Clone ID: 24GB2550

Species Reactivity: Human

Applications Tested: Western blotting (WB), flow cytometry (FCM), immunocytochemistry (IC)

Immunogen

A synthesized peptide derived from human UBE2C

Isotype

Rabbit IgG

Storage Buffer

Supplied in PBS (pH 7.4) containing 50% glycerol, and 0.02% sodium azide.

Storage

Store at -20 °C for one year.

Recommended Dilutions

Western Blotting (WB): 1:1,000-1:5,000

Flow Cytometry (FCM): 1:2,000

Immunocytochemistry (IC): 1:100-1:1,000

SUPPORT

SUPPORT@GENUINBIOTECH.COM
TEL: +1-540-855-7041

ORDERS

SALES@GENUINBIOTECH.COM
FAX: +1-540-855-7041

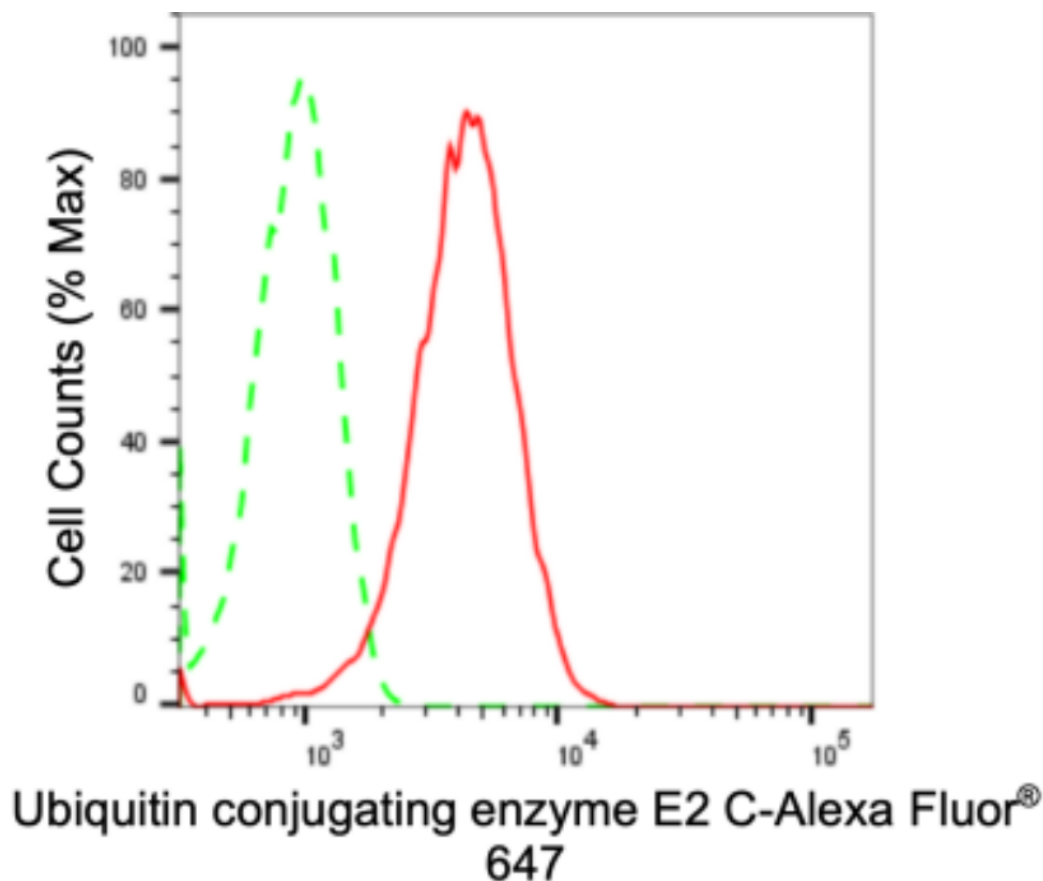
WWW.GENUINBIOTECH.COM

Anti-UBE2C Recombinant Rabbit Monoclonal Antibody

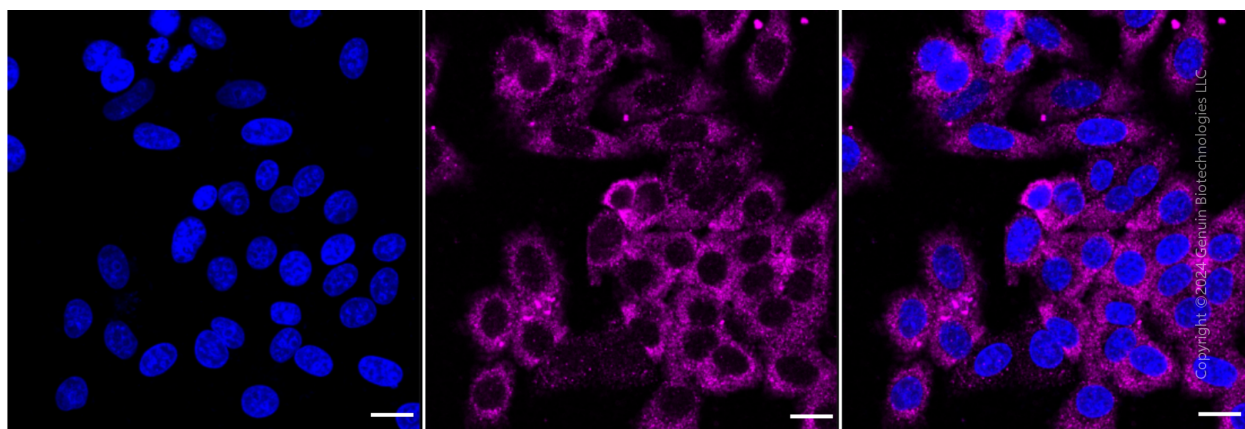
PAGE 2

Note: This product is for research use only.

Validation Data



Flow cytometric analysis of Ubiquitin conjugating enzyme E2 C expression in HepG2 cells using anti-Ubiquitin conjugating enzyme E2 C antibody (Cat#2675, 1:2,000). Green, isotype control; red, Ubiquitin conjugating enzyme E2 C.



Immunocytochemical staining of HepG2 cells with anti-Ubiquitin conjugating enzyme E2 C antibody (Cat#2675, 1:1,000). Nuclei were stained blue with DAPI; Ubiquitin conjugating enzyme

SUPPORT

SUPPORT@GENUINBIOTECH.COM
TEL: +1-540-855-7041

ORDERS

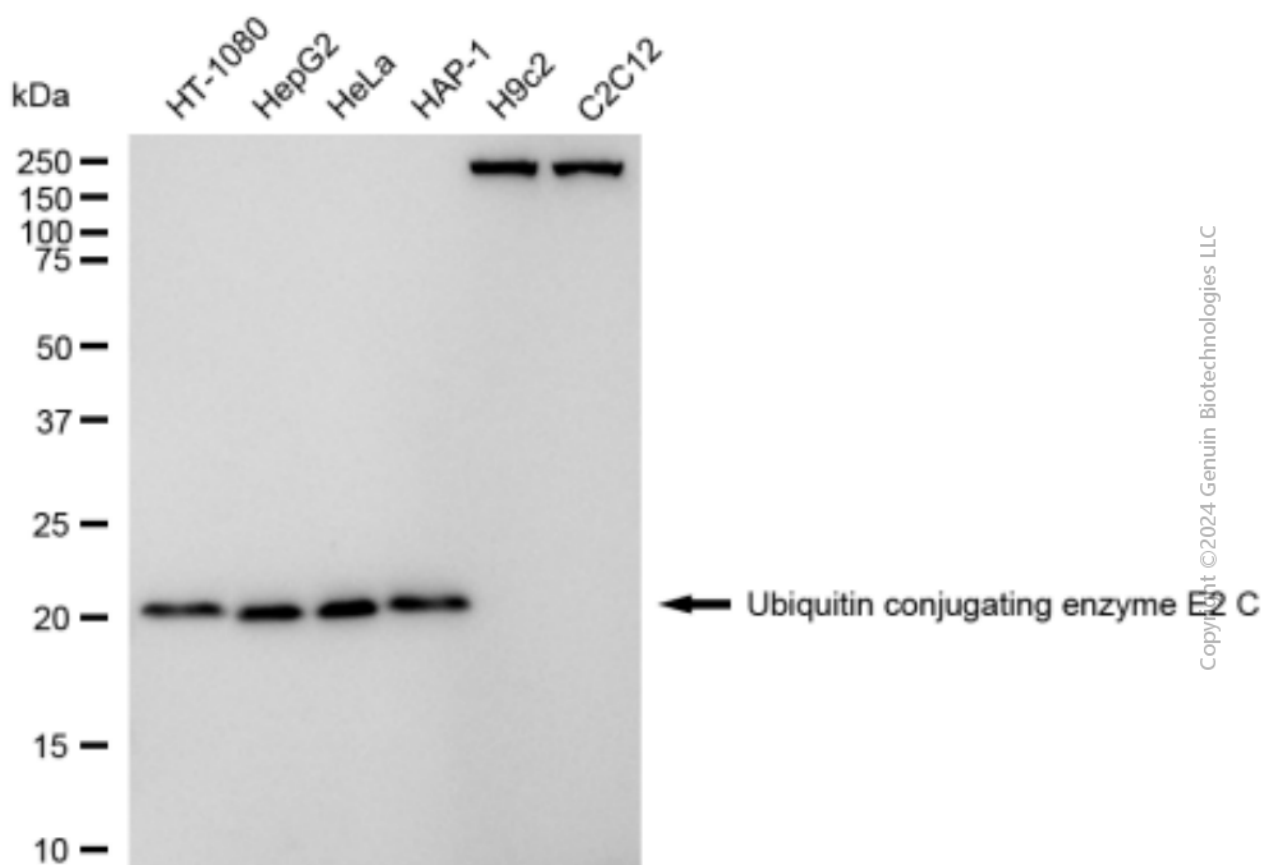
SALES@GENUINBIOTECH.COM
FAX: +1-540-855-7041

WWW.GENUINBIOTECH.COM

Anti-UBE2C Recombinant Rabbit Monoclonal Antibody

PAGE 3

E2 C was stained magenta with Alexa Fluor® 647. Images were taken using Leica stellaris 5. Protein abundance based on laser Intensity and smart gain: Medium. Scale bar: 20 μ m.



Western blotting analysis using anti-ubiquitin conjugating enzyme E2 C antibody (Cat#2675). Total cell lysates (30 μ g) from various cell lines were loaded and separated by SDS-PAGE. The blot was incubated with anti-ubiquitin conjugating enzyme E2 C antibody (Cat#2675, 1:5,000) and HRP-conjugated goat anti-rabbit secondary antibody (Cat#201, 1:20,000) respectively. Image was developed using FeQ™ ECL Substrate Kit (Cat#226).

SUPPORT

SUPPORT@GENUINBIOTECH.COM
TEL: +1-540-855-7041

ORDERS

SALES@GENUINBIOTECH.COM
FAX: +1-540-855-7041

WWW.GENUINBIOTECH.COM