

Anti-Steroid 5 Alpha-Reductase 2 Recombinant Rabbit Monoclonal Antibody



Catalog #: 2676

Aliases

SRD5A2; Steroid 5 Alpha-Reductase 2; 3-Oxo-5-Alpha-Steroid 4-Dehydrogenase 2; Steroid-5-Alpha-Reductase, Alpha Polypeptide 2 (3-Oxo-5 Alpha-Steroid Delta 4-Dehydrogenase Alpha 2); Type II 5-Alpha Reductase

Background

Gene Name: SRD5A2

NCBI Gene Entry: [6716](#)

UniProt Entry: [P31213](#)

Application Information

Molecular Weight: Predicted, 28 kDa; observed, 28 kDa

Clonality: Rabbit monoclonal antibody

Clone ID: 24GB2565

Species Reactivity: Human, mouse, rat

Applications Tested: Western blotting (WB), flow cytometry (FCM), immunocytochemistry (IC)

Immunogen

A synthesized peptide derived from human SRD5A2

Isotype

Rabbit IgG

Storage Buffer

Supplied in PBS (pH 7.4) containing 50% glycerol, and 0.02% sodium azide.

Storage

Store at -20 °C for one year.

Recommended Dilutions

Western Blotting (WB): 1:1,000-1:5,000

Flow Cytometry (FCM): 1:2,000

Immunocytochemistry (IC): 1:100-1:1,000

Note: This product is for research use only.

SUPPORT

SUPPORT@GENUINBIOTECH.COM
TEL: +1-540-855-7041

ORDERS

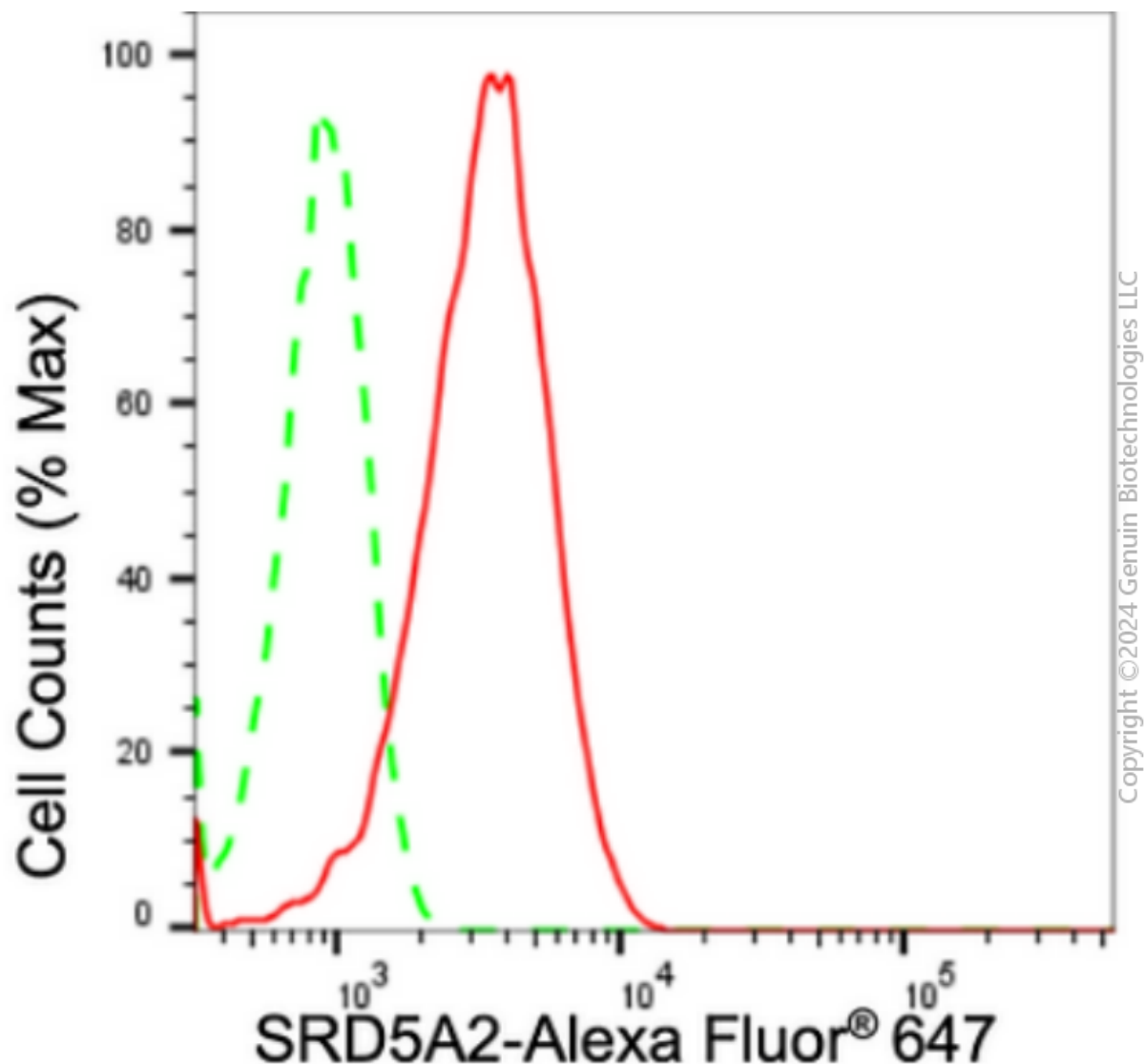
SALES@GENUINBIOTECH.COM
FAX: +1-540-855-7041

WWW.GENUINBIOTECH.COM

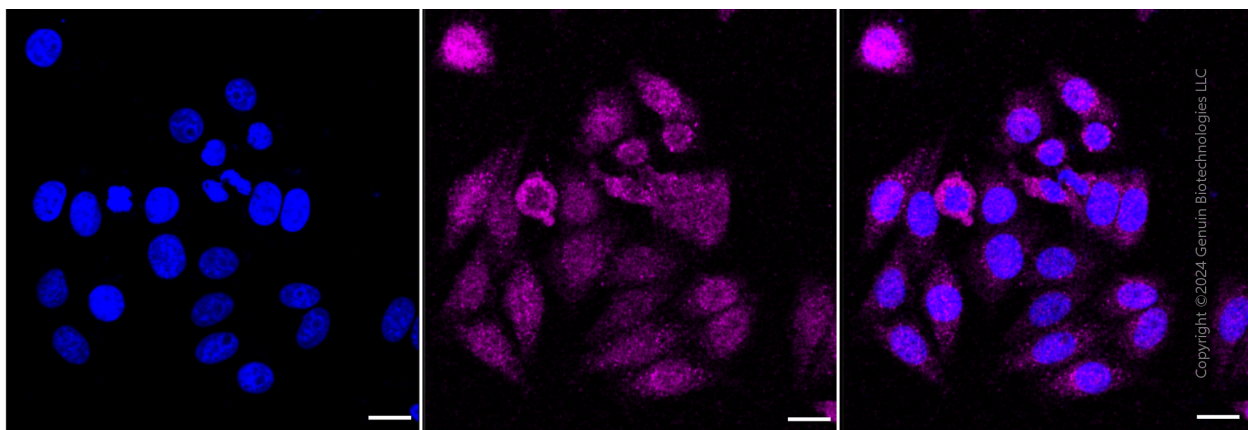
Anti-Steroid 5 Alpha-Reductase 2 Recombinant Rabbit Monoclonal Antibody

PAGE 2

Validation Data



Flow cytometric analysis of SRD5A2 expression in HepG2 cells using anti-SRD5A2 antibody (Cat#2676, 1:2,000). Green, isotype control; red, SRD5A2.



SUPPORT

SUPPORT@GENUINBIOTECH.COM
TEL: +1-540-855-7041

ORDERS

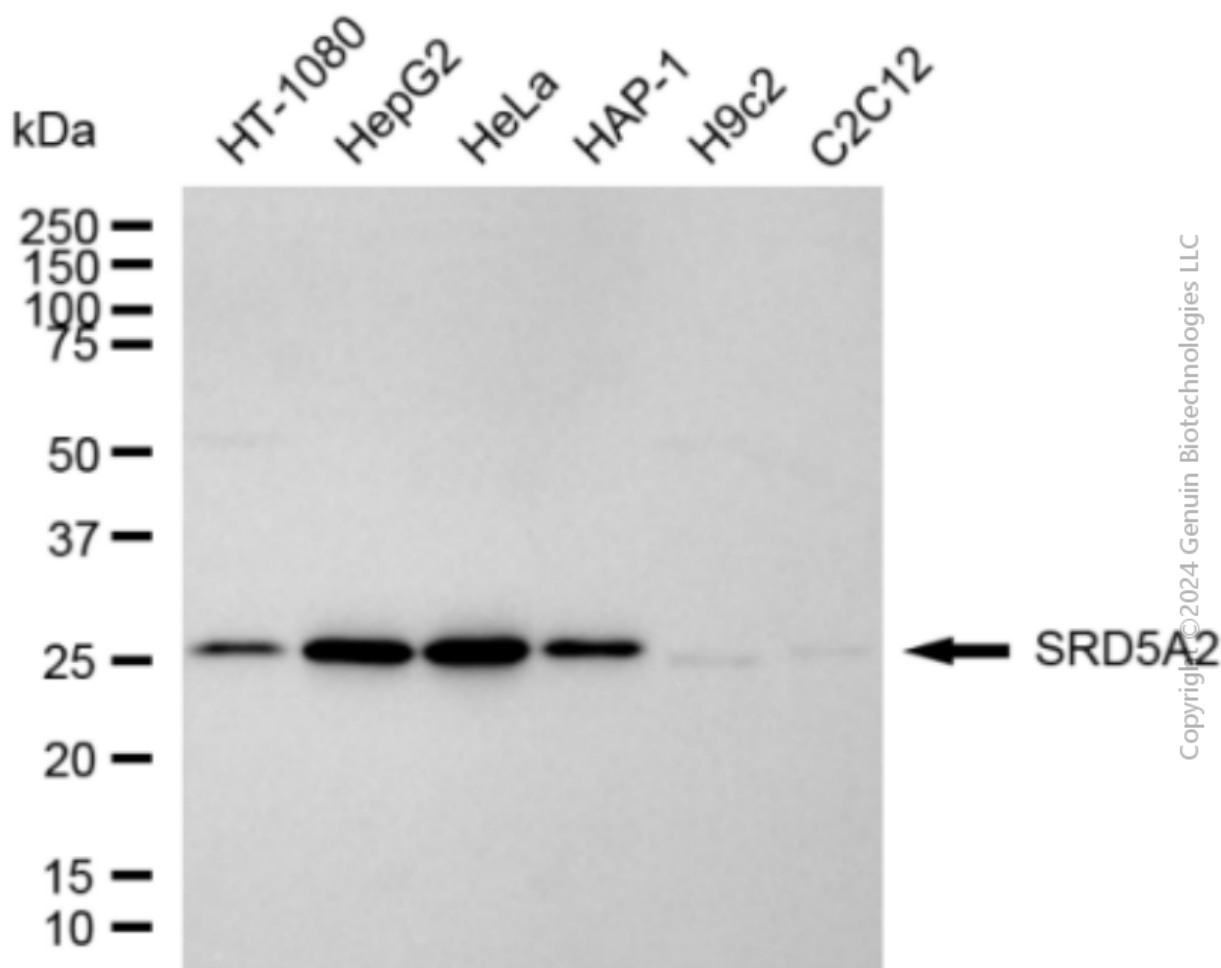
SALES@GENUINBIOTECH.COM
FAX: +1-540-855-7041

WWW.GENUINBIOTECH.COM

Anti-Steroid 5 Alpha-Reductase 2 Recombinant Rabbit Monoclonal Antibody

PAGE 3

Immunocytochemical staining of HepG2 cells with anti-SRD5A2 antibody (Cat#2676, 1:1,000). Nuclei were stained blue with DAPI; SRD5A2 was stained magenta with Alexa Fluor® 647. Images were taken using Leica stellaris 5. Protein abundance based on laser Intensity and smart gain: Medium. Scale bar: 20 μ m.



Western blotting analysis using anti-SRD5A2 antibody (Cat#2676). Total cell lysates (30 μ g) from various cell lines were loaded and separated by SDS-PAGE. The blot was incubated with anti-SRD5A2 antibody (Cat#2676, 1:5,000) and HRP-conjugated goat anti-rabbit secondary antibody (Cat#201, 1:20,000) respectively. Image was developed using FeQ™ ECL Substrate Kit (Cat#226).

SUPPORT

SUPPORT@GENUINBIOTECH.COM
TEL: +1-540-855-7041

ORDERS

SALES@GENUINBIOTECH.COM
FAX: +1-540-855-7041

WWW.GENUINBIOTECH.COM