

Anti-Uridine Phosphorylase 1 Recombinant Rabbit Monoclonal Antibody



Catalog #: 2684

Aliases

UPP1; Uridine Phosphorylase 1; UDRPASE; UPASE; UPP; UP; UrdPase 1; UPase 1; Uridine Phosphorylase; EC 2.4.2.3

Background

Gene Name: UPP1

NCBI Gene Entry: [7378](#)

UniProt Entry: [Q16831](#)

Application Information

Molecular Weight: Predicted, 34 kDa; observed, 28 kDa

Clonality: Rabbit monoclonal antibody

Clone ID: 24GB1780

Species Reactivity: Human, mouse, rat

Applications Tested: Western blotting (WB)

Immunogen

A synthesized peptide derived from human UPP1

Isotype

Rabbit IgG

Storage Buffer

Supplied in PBS (pH 7.4) containing 50% glycerol, and 0.02% sodium azide.

Storage

Store at -20 °C for one year.

Recommended Dilutions

Western Blotting (WB): 1:1,000-1:5,000

Note: This product is for research use only.

Validation Data

SUPPORT

SUPPORT@GENUINBIOTECH.COM
TEL: +1-540-855-7041

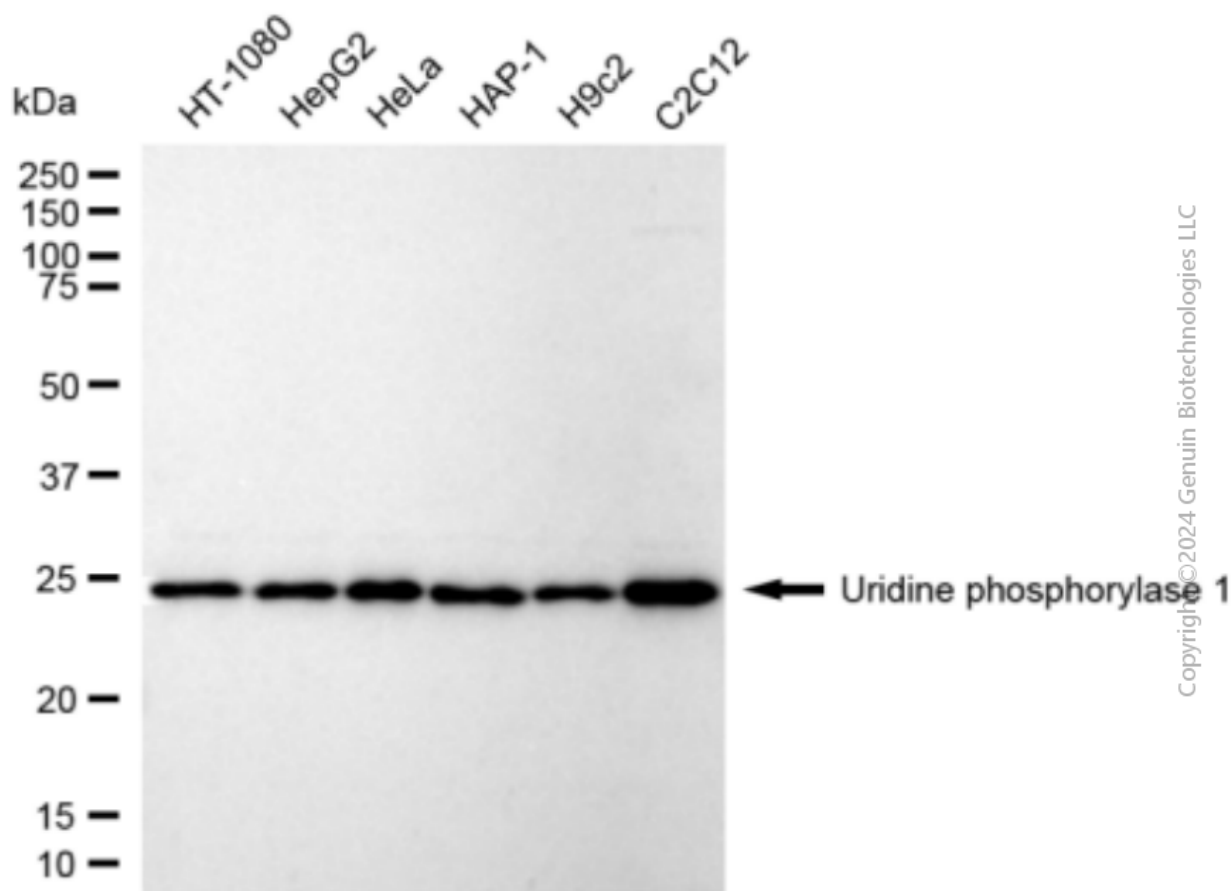
ORDERS

SALES@GENUINBIOTECH.COM
FAX: +1-540-855-7041

WWW.GENUINBIOTECH.COM

Anti-Uridine Phosphorylase 1 Recombinant Rabbit Monoclonal Antibody

PAGE 2



Western blotting analysis using anti-Uridine phosphorylase 1 antibody (Cat#2684). Total cell lysates (30 µg) from various cell lines were loaded and separated by SDS-PAGE. The blot was incubated with anti-Uridine phosphorylase 1 antibody (Cat#2684, 1:5,000) and HRP-conjugated goat anti-rabbit secondary antibody (Cat#201, 1:20,000) respectively. Image was developed using FeQ™ ECL Substrate Kit (Cat#226).

SUPPORT

SUPPORT@GENUINBIOTECH.COM
TEL: +1-540-855-7041

ORDERS

SALES@GENUINBIOTECH.COM
FAX: +1-540-855-7041

WWW.GENUINBIOTECH.COM