

Anti-Solute Carrier Family 45 Member 3 Recombinant Rabbit Monoclonal Antibody



Catalog #: 2686

Aliases

SLC45A3; Solute Carrier Family 45 Member 3; Prostein; PCANAP6; IPCA-6; IPCA-2; IPCA-8; Prostate Cancer Associated Protein 6; Prostate Cancer Associated Protein 2; Prostate Cancer Associated Protein 8; PCANAP2; PCANAP8; PRST; Prostate Cancer-Associated Protein 6; Solute Carrier Family 45, Member 3; Prostate Cancer-Associated Gene; Prostate Cancer-Associated Gene 6; Prostate Cancer-Associated Gene 8; IPCA6

Background

Gene Name: SLC45A3

NCBI Gene Entry: [85414](#)

UniProt Entry: [Q96JT2](#)

Application Information

Molecular Weight: Predicted, 59 kDa; observed, 52 kDa

Clonality: Rabbit monoclonal antibody

Clone ID: 24GB1800

Species Reactivity: Human

Applications Tested: Western blotting (WB), immunocytochemistry (IC)

Immunogen

A synthesized peptide derived from human Prostein

Isotype

Rabbit IgG

Storage Buffer

Supplied in PBS (pH 7.4) containing 50% glycerol, and 0.02% sodium azide.

Storage

Store at -20 °C for one year.

Recommended Dilutions

Western Blotting (WB): 1:1,000-1:5,000

Immunocytochemistry (IC): 1:100-1:1,000

SUPPORT

SUPPORT@GENUINBIOTECH.COM
TEL: +1-540-855-7041

ORDERS

SALES@GENUINBIOTECH.COM
FAX: +1-540-855-7041

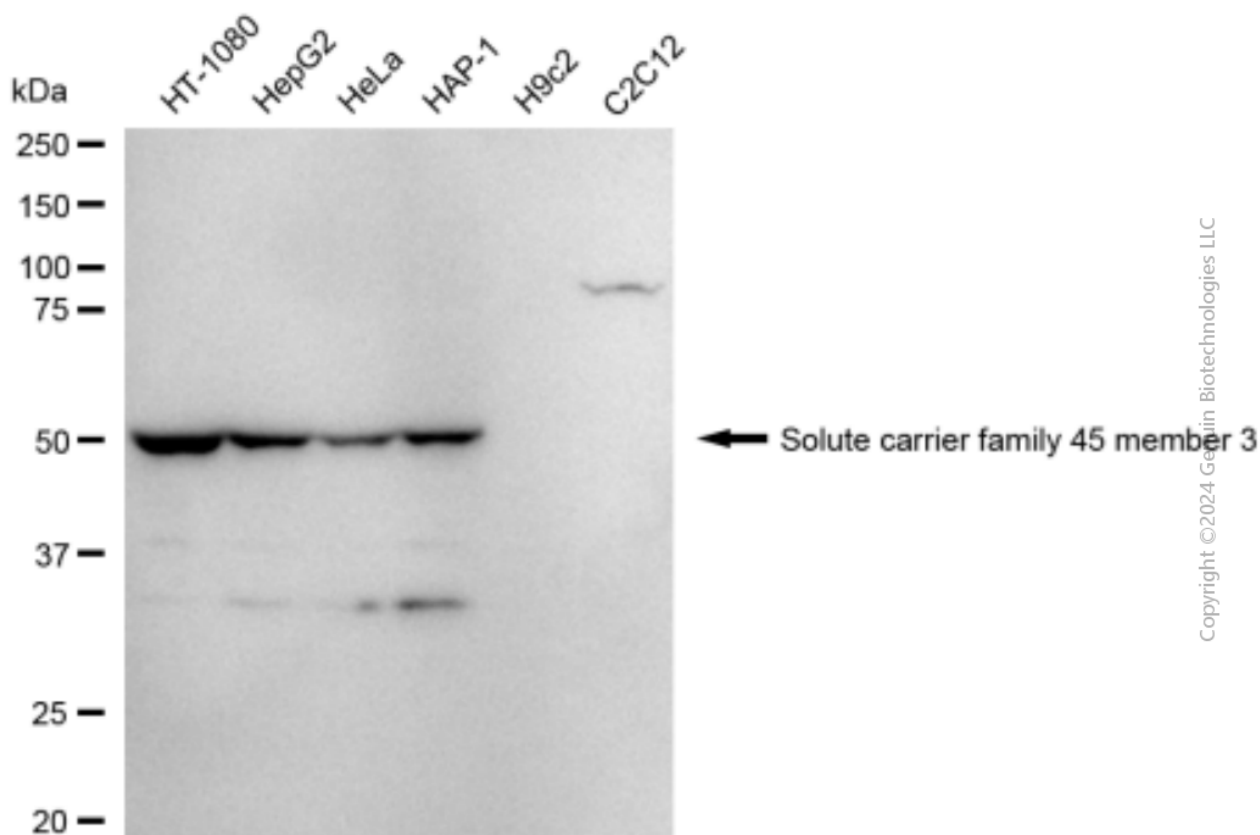
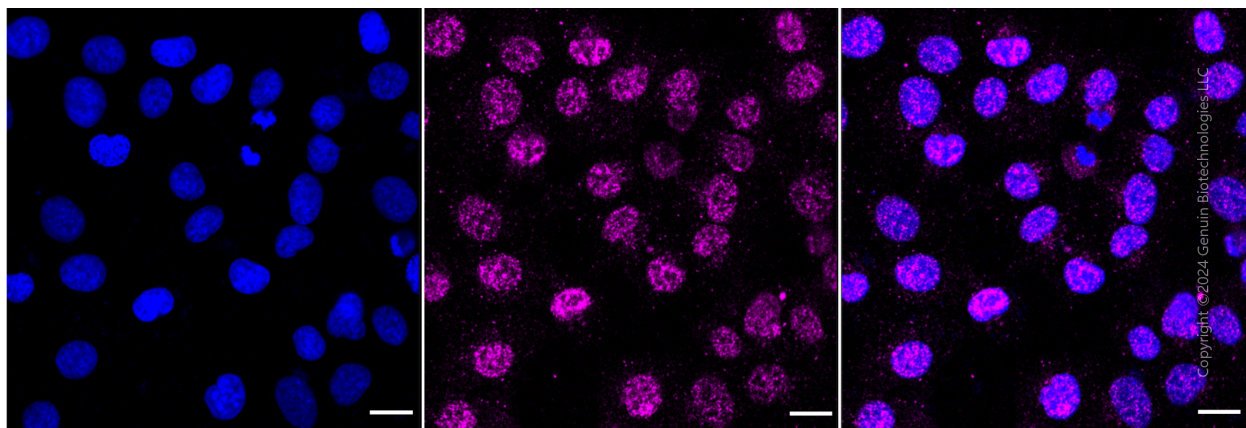
WWW.GENUINBIOTECH.COM

Anti-Solute Carrier Family 45 Member 3 Recombinant Rabbit Monoclonal Antibody

PAGE 2

Note: This product is for research use only.

Validation Data



Western blotting analysis using anti-solute carrier family 45 member 3 antibody (Cat#2686). Total cell lysates (30 µg) from various cell lines were loaded and separated by SDS-PAGE. The blot was

SUPPORT

SUPPORT@GENUINBIOTECH.COM
TEL: +1-540-855-7041

ORDERS

SALES@GENUINBIOTECH.COM
FAX: +1-540-855-7041

WWW.GENUINBIOTECH.COM

Anti-Solute Carrier Family 45 Member 3 Recombinant Rabbit Monoclonal Antibody

PAGE 3

incubated with anti-solute carrier family 45 member 3 antibody (Cat#2686, 1:5,000) and HRP-conjugated goat anti-rabbit secondary antibody (Cat#201, 1:20,000) respectively. Image was developed using FeQ™ ECL Substrate Kit (Cat#226).

SUPPORT

SUPPORT@GENUINBIOTECH.COM
TEL: +1-540-855-7041

ORDERS

SALES@GENUINBIOTECH.COM
FAX: +1-540-855-7041

WWW.GENUINBIOTECH.COM