

Anti-Somatostatin Receptor 1 Recombinant Rabbit Monoclonal Antibody



Catalog #: 2687

Aliases

SSTR1; Somatostatin Receptor 1; Somatostatin Receptor Type 1; SRIF-2; SS-1-R; SS1-R; SS1R; SST1

Background

Gene Name: SSTR1

NCBI Gene Entry: [6751](#)

UniProt Entry: [P30872](#)

Application Information

Molecular Weight: Predicted, 43 kDa; observed, 40 kDa

Clonality: Rabbit monoclonal antibody

Clone ID: 24GB1840

Species Reactivity: Human, mouse, rat

Applications Tested: Western blotting (WB)

Immunogen

A synthesized peptide derived from human Somatostatin Receptor 1

Isotype

Rabbit IgG

Storage Buffer

Supplied in PBS (pH 7.4) containing 50% glycerol, and 0.02% sodium azide.

Storage

Store at -20 °C for one year.

Recommended Dilutions

Western Blotting (WB): 1:1,000-1:5,000

Note: This product is for research use only.

Validation Data

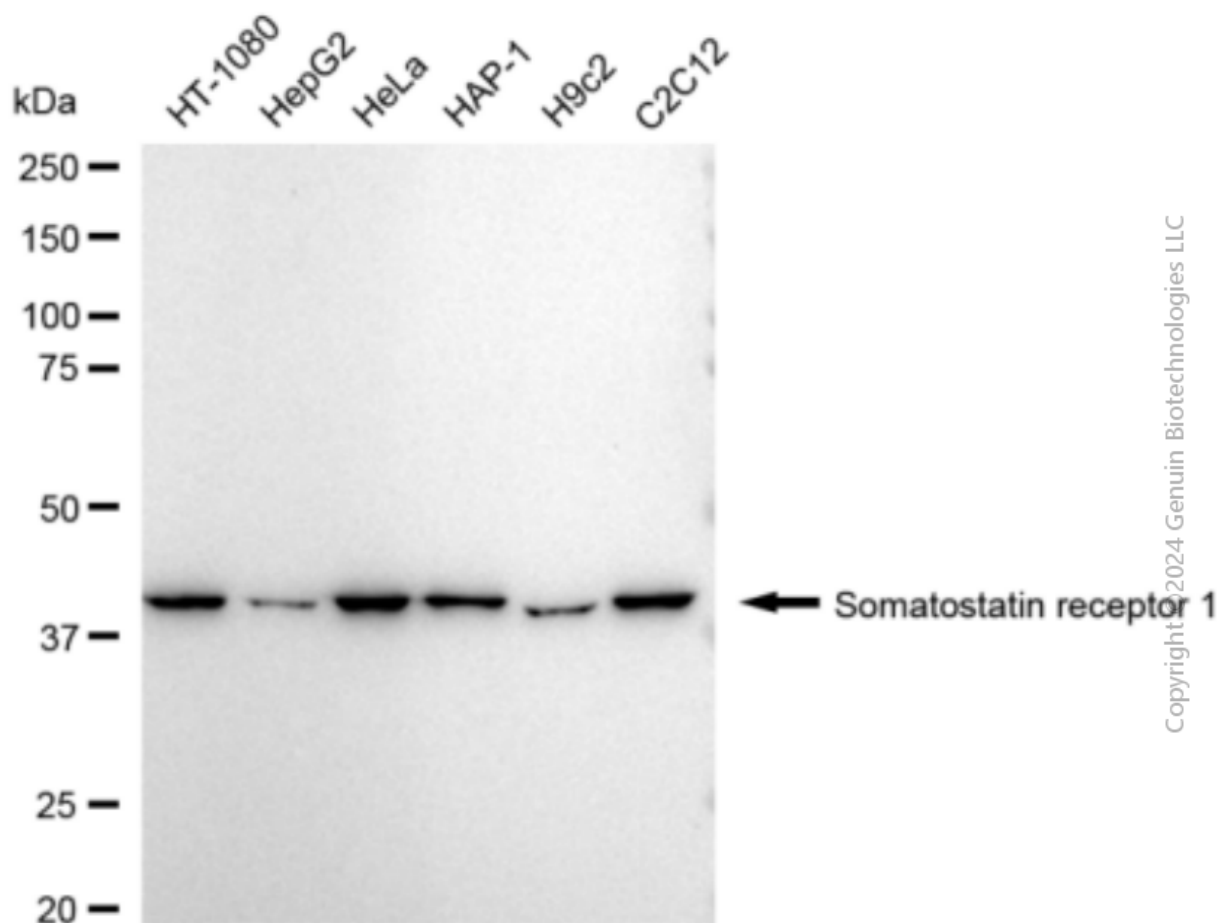
SUPPORT

SUPPORT@GENUINBIOTECH.COM
TEL: +1-540-855-7041

ORDERS

SALES@GENUINBIOTECH.COM
FAX: +1-540-855-7041

WWW.GENUINBIOTECH.COM



Western blotting analysis using anti-Somatostatin receptor 1 antibody (Cat#2687). Total cell lysates (30 μ g) from various cell lines were loaded and separated by SDS-PAGE. The blot was incubated with anti-Somatostatin receptor 1 antibody (Cat#2687, 1:5,000) and HRP-conjugated goat anti-rabbit secondary antibody (Cat#201, 1:20,000) respectively. Image was developed using FeQ™ ECL Substrate Kit (Cat#226).